

THIS IS WHO WE ARE.



**FACES & VOICES
OF RECOVERY**

ADVOCATE. ACT. ADVANCE.

Keeping them in the Boat: *Strategies for promoting long term Recovery stability*

presented by

- Philip Rutherford, Chief Operating Officer

What We Do

- **Policy Advocacy**
 - We advocate for policies that are supportive of Peer Recovery Support Services
- **Training/Technical assistance**
 - Though our National Recovery Institute, we offer comprehensive training
- **Recovery data collection**
 - We collect and curate a nationwide data set (Recovery Data Platform™) leveraging evidence-based practices and real-world best practice
- **Recovery Community Organizations**
 - We manage The Association of Recovery Community Organizations® (ARCO)
- **Accreditation**
 - Our sister agency CAPRSS ensures rigor and fidelity of best practice methods peer support

Objectives

- How do we identify long term recovery stability?
- Describe RCC and RCO structures
- Identify similarities between the two models
- Describe data driven recovery
- Identify Data gathering and processes currently in use

Definitions

RCC and RCO

Recovery Community Center (RCC)

- Non-profit centers for the recovery community that offer local networks of non-medical, recovery support services.
- <https://www.recoveryanswers.org/resource/recovery-community-centers/>

Recovery Community Organization (RCO)

- A recovery community organization (RCO) is an independent, non-profit organization led and governed by representatives of local communities of recovery.
- Phillip A. Valentine, William L. White and Pat Taylor, 2007

Key Similarities: RCC and RCO

Recovery Community Center (RCC)

Peer-Operated

Non-Profit

Community-Based

Volunteer Opportunities

Activities



Recovery Community Organization (RCO)

Led and governed by representatives of local communities of recovery.

Non-Profit

Community-Based

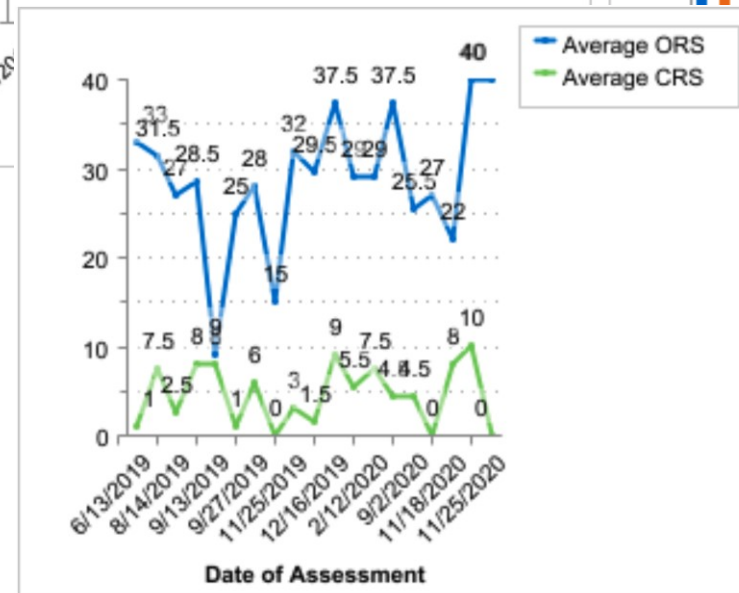
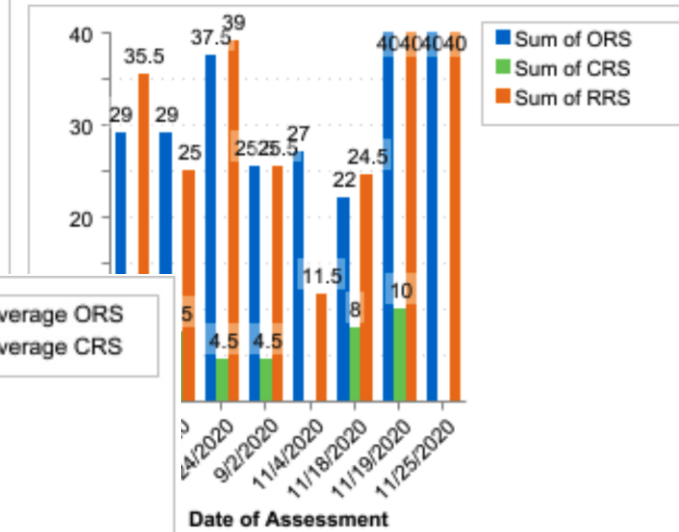
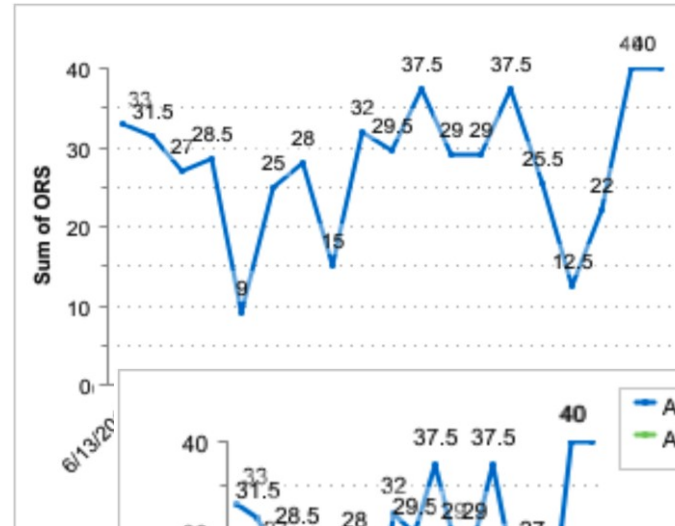
Volunteer Opportunities

Activities

Data Driven Recovery

Evidence Based Practices

- BARC 10
- Outcome Rating
- Relationship Rating
- Recovery Capital
- *PHQ-9*
- *GAD-7*

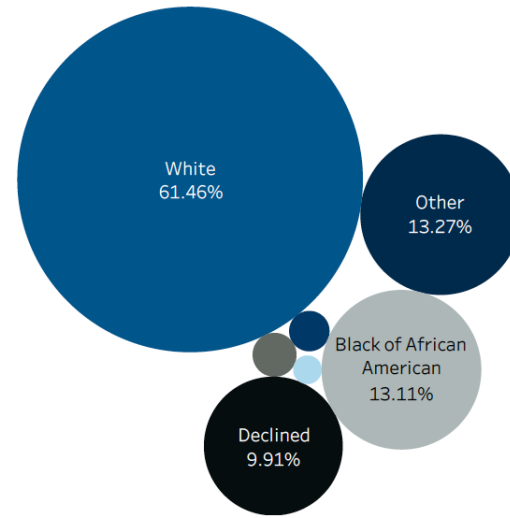




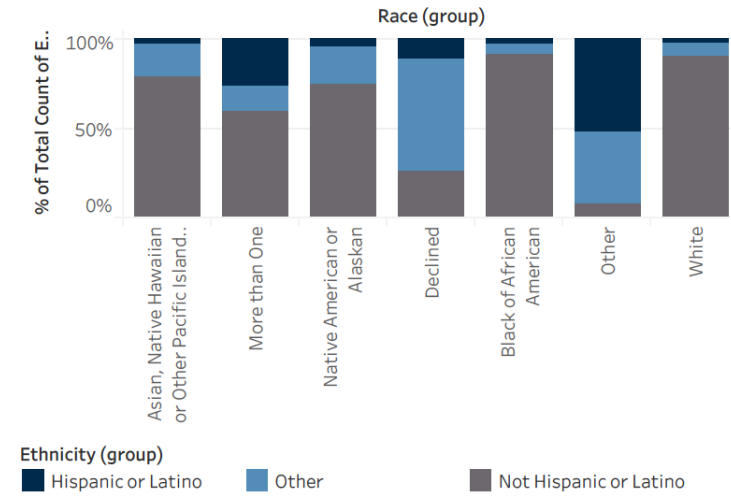
CONCEPTS

Demographics

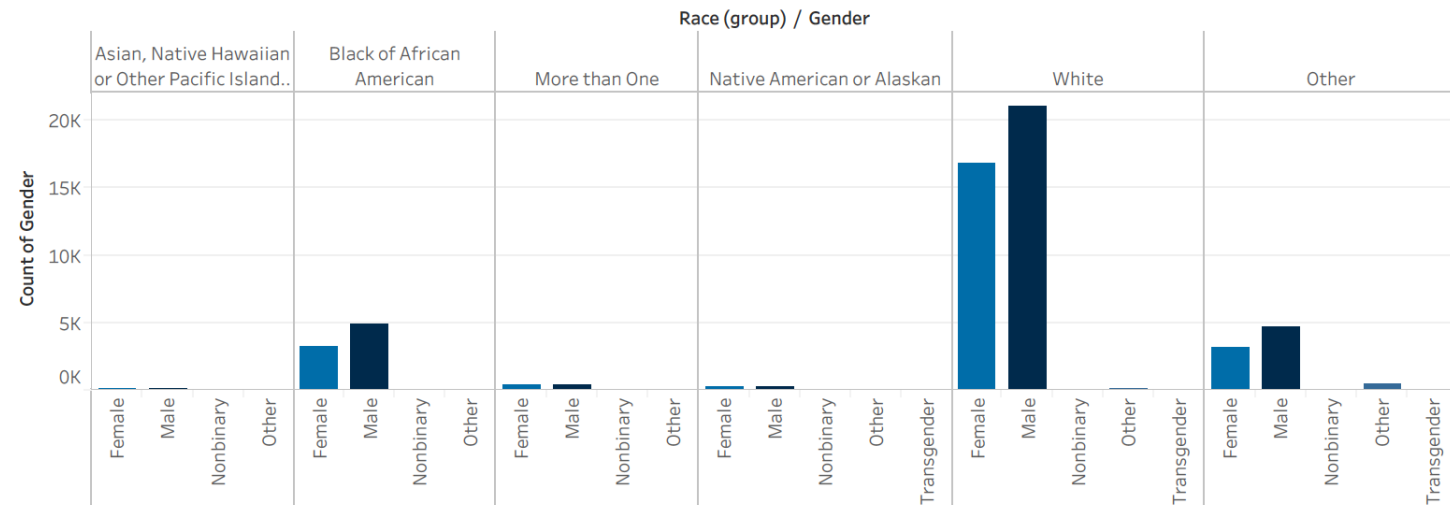
Race



Ethnicity by Race



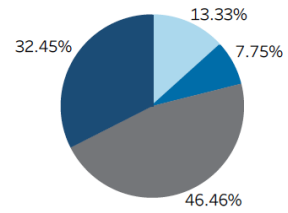
Gender by Race





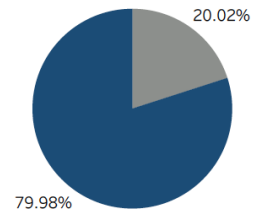
CONCEPTS

Employment



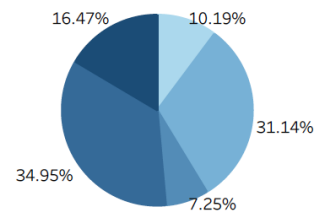
- Employment status? (group)
- Not Applicable
 - Other
 - Unemployed and looking for ..
 - Working full or part time

Stable Place to Live



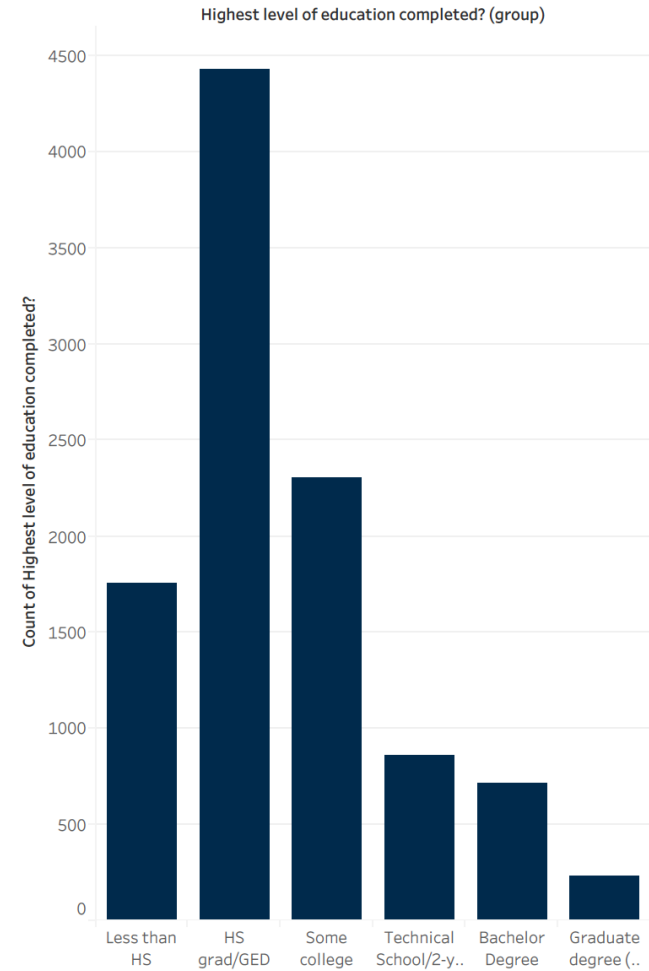
- Stable place to live
- No
 - Yes

Mental Health



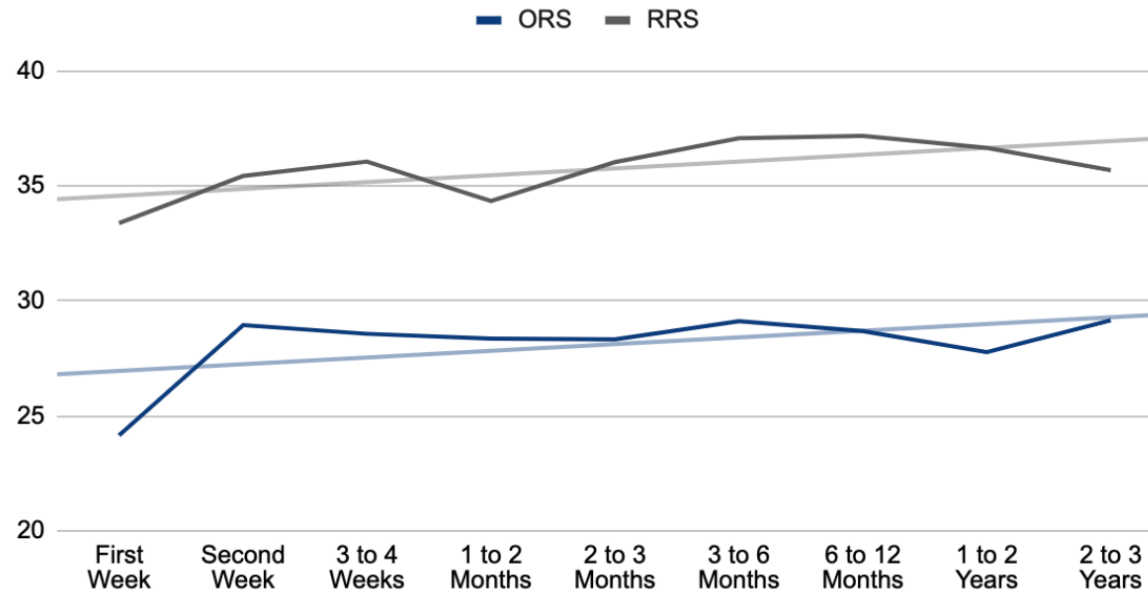
- Rate mental health (group)
- Bad
 - Good
 - Great
 - Okay
 - Other

Education

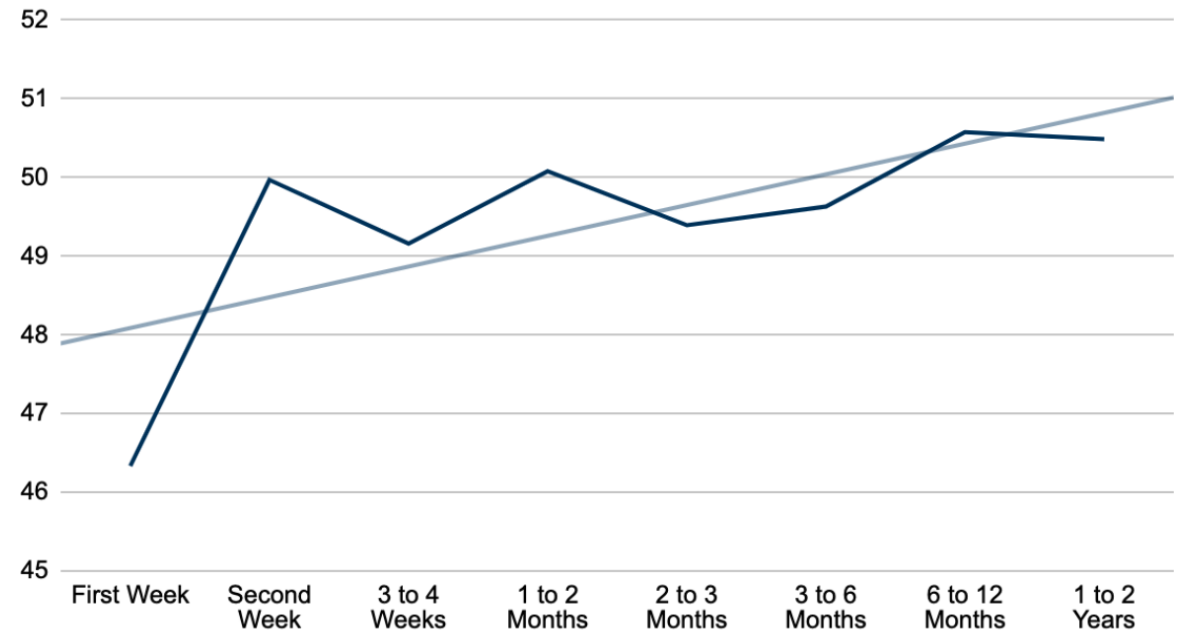


ORS & BARC 10

Outcomes (ORS) to Relationship (RRS) by Time Period (N= 10,600)

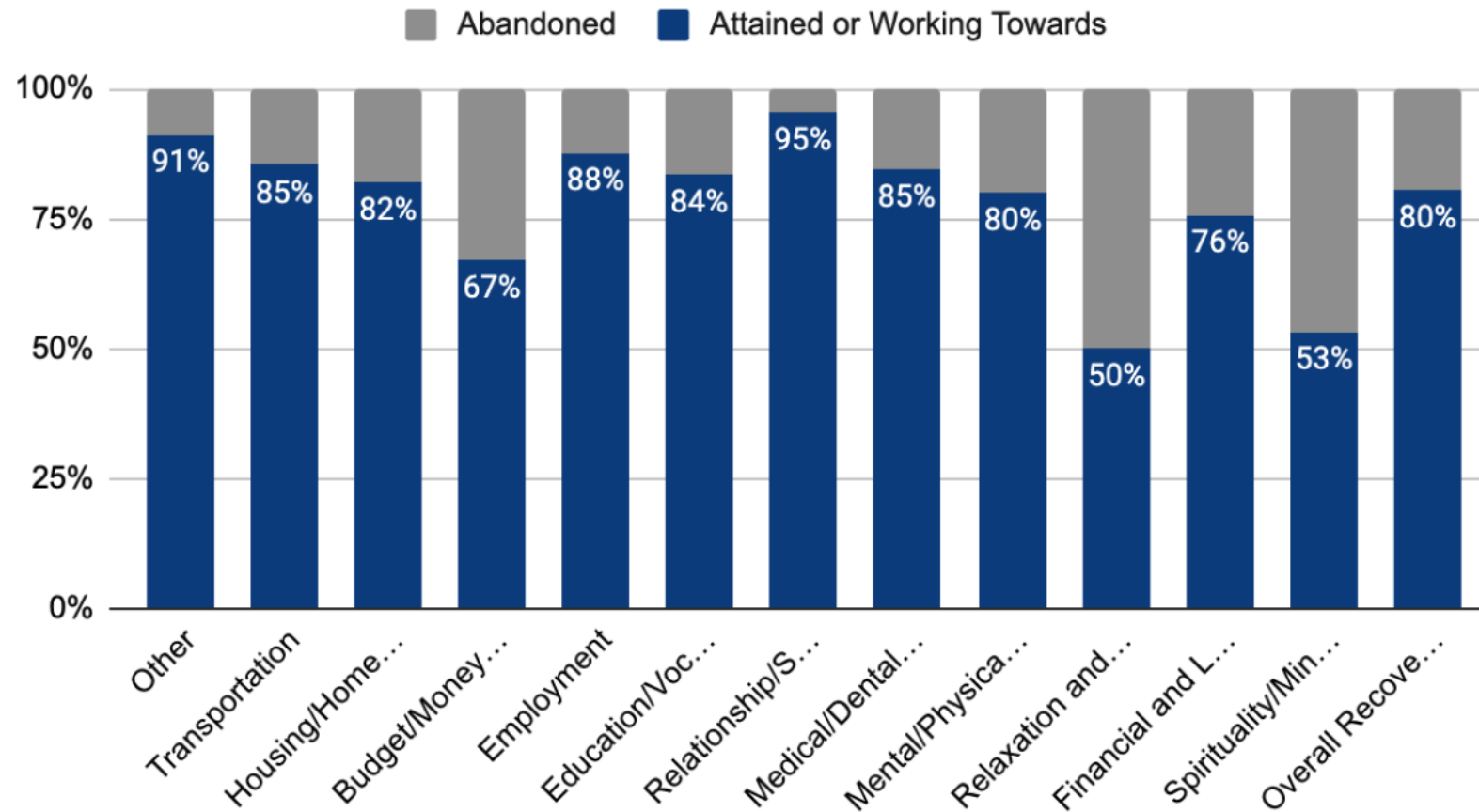


BARC-10 by Time Period (N= 4,999)



Recovery Management Planning

Goals by Category and Status (N= 4,691)





FACES & VOICES OF RECOVERY

ADVOCATE. ACT. ADVANCE.



facesandvoicesofrecovery.org

10 G Street, Suite 600, Washington, DC 20002



FACES & VOICES OF RECOVERY

ADVOCATE. ACT. ADVANCE.