



National Institute  
on Alcohol Abuse  
and Alcoholism

National Institute on Alcohol Abuse and Alcoholism  
Division of Epidemiology and Prevention Research  
Alcohol Epidemiologic Data System

## **SURVEILLANCE REPORT #121**

# **APPARENT PER CAPITA ALCOHOL CONSUMPTION: NATIONAL, STATE, AND REGIONAL TRENDS, 1977–2022**

Megan E. Slater, Ph.D.  
Hillel R. Alpert, Sc.D.

CSR, Incorporated<sup>1</sup>  
Suite 400  
20130 Lakeview Center Plaza  
Ashburn, VA 20147

**April 2024**

U.S. Department of Health and Human Services  
Public Health Service  
National Institutes of Health

<sup>1</sup> CSR, Incorporated, operates the Alcohol Epidemiologic Data System (AEDS) under Contract No. 75N94023C00015 for the National Institute on Alcohol Abuse and Alcoholism (NIAAA). Dr. Bradley Kerridge (Division of Epidemiology and Prevention Research) serves as the NIAAA Contracting Officer's Representative on the contract.

(Blank page)

## HIGHLIGHTS

This surveillance report on 1977–2022 apparent per capita alcohol consumption in the United States is the 38th in a series of consumption reports produced annually by the National Institute on Alcohol Abuse and Alcoholism (NIAAA). Findings are based on alcoholic beverage sales data collected by the Alcohol Epidemiologic Data System (AEDS) from the States or from the National Alcohol Beverage Control Association and from various reports produced by beverage industry sources. Population data from the U.S. Census Bureau are used as denominators to calculate per capita rates.

The following are highlights from the current report, which updates consumption trends through 2022:

- Per capita consumption of ethanol from all alcoholic beverages combined in 2022 was 2.50 gallons, representing a 1.2 percent decrease from 2.53 gallons in 2021. Notably, 2022 marked the first time since 1969 that per capita consumption of ethanol from spirits was higher than from beer.
- Between 2021 and 2022, changes in overall per capita ethanol consumption included increases in 11 States, decreases in 34 States and the District of Columbia, and no changes in 5 States.
- Analysis of overall per capita alcohol consumption by U.S. Census region between 2021 and 2022 indicated an increase of 0.4 percent in the West and decreases of 0.8 percent in the Northeast, 2.0 percent in the Midwest, and 2.5 percent in the South.
- In 2022, State-level per capita annual alcohol consumption was more than 10 percent above the overall national level (> 2.75 gallons) in 18 States and the District of Columbia, 10 percent or less above the national level (> 2.50–2.75 gallons) in 3 States, up to 10 percent below the national level (2.25–2.50 gallons) in 13 States, and more than 10 percent below the national level (< 2.25 gallons) in 16 States.

---

## INTRODUCTION

This surveillance report on apparent per capita alcohol consumption in the United States is the 38th in a series of reports that examine alcohol consumption trends on a national, State, and regional basis. Like previous reports on per capita alcohol consumption, it is intended to provide updated alcohol information for policymakers, health care providers, researchers, and others concerned about alcohol issues.

According to NIAAA (2022), a “standard drink” in the United States contains 0.6 fluid ounces of ethanol. Thus, the 2022 national annual per capita consumption level of 2.50 gallons of ethanol equates to a person aged 14 or older consuming approximately an average of 533 standard drinks in a year.

The current report updates the 1977–2021 alcohol consumption trends (Slater and Alpert 2023) with new data for 2022. Data are shown

in four tables. Table 1 presents national data on trends in beer, wine, and spirits consumption as well as on all alcoholic beverages combined. Table 2 presents data on alcohol consumption for individual States for 2022. States also are ranked in deciles according to annual per capita ethanol consumption. Table 3 presents the alcoholic beverage sales and shipment data sources for the volume data presented in Table 2. Table 4 presents data on consumption trends for each type of beverage and all beverages combined for the States as well as for the four regions defined by the U.S. Census Bureau: Northeast, Midwest, South, and West.

## DATA

### Alcohol Consumption Data

AEDS makes every effort to obtain alcoholic beverage sales data from all States and the District of Columbia. AEDS prefers sales data to production and shipments data from beverage

industry sources because sales data more accurately reflect actual alcoholic beverage consumption levels. States provide sales data in the form of volume or tax revenue that AEDS converts to gallons by using State tax rates. For 2022, AEDS received beverage sales and/or tax receipts reports from 33 States. AEDS also received spirits and wine sales data for alcoholic beverage control States from the National Alcohol Beverage Control Association. When State data were unavailable or unusable, AEDS used shipment data from beverage industry sources (Beverage Information Group 2023a, b, c) as a supplementary data source (Table 3). National and regional consumption data were estimated based on the sum of corresponding State-level volumes in gallons. The mixed use of data from sales and shipments sources appears to have little effect on overall trends in per capita alcohol consumption (Campbell et al. 1994; Haughwout et al. 2015). Some of the consumption estimates reported in the current report may differ slightly from those published in the previous year due to updates and revisions based on data received after publication. The types of data sources AEDS used to obtain alcohol consumption data are listed for years 2001–2022 in this report’s data file (<https://pubs.niaaa.nih.gov/publications/surveillance.htm>).

### **Population Data**

AEDS obtained State population estimates for people ages 14 and older from the Centers for Disease Control and Prevention’s (CDC) WONDER online query system, which provides population estimates produced by the U.S. Census Bureau (Single-race Population Estimates 2023; U.S. Department of Health and Human Services 2021). These data are used as denominators to calculate the per capita consumption figures.

To make the trend data more precise, AEDS revises data published in previous reports when

the Census Bureau revises its population estimates. This report updates the 2020–2021 population estimates using revised estimates of the July 1 resident population from the Vintage 2022 postcensal series (Single-race Population Estimates 2023).

## **METHODS**

### **Conversion of Ethanol Content**

AEDS uses an estimate of average ethanol content in alcoholic beverages to convert gallons of sold or shipped beer, wine, and spirits into gallons of ethanol (pure alcohol) before calculating per capita consumption estimates. For data years 1977–2022, the alcohol by volume (ABV; i.e., proportion of ethanol for each beverage type) values are 0.045 for beer, 0.129 for wine, and 0.411 for spirits (Doernberg and Stinson 1985). Following the ethanol conversions, gallons of ethanol for beer, wine, and spirits are summed to gallons of ethanol for all beverages.

AEDS has considered changes in the alcoholic beverage market over time that may affect the fixed ABV estimates used in this report (Martinez et al. 2019). Changes in the average net ethanol content across beverage types have been relatively minimal (i.e., correlations between per capita consumption estimates derived from fixed and time-varying ABVs are >0.98 and >0.94 for national overall and beverage-specific estimates, respectively) and not large enough to alter the trends in overall per capita consumption, which have been parallel since 1995. However, there was a notable one-year drop in average ABV for spirits—from 0.372 in 2021 to 0.345 in 2022—which will continue to be monitored closely in future reports. AEDS provides time-varying ABVs and corresponding gallons of ethanol in this report’s data file for comparison purposes (<https://pubs.niaaa.nih.gov/publications/surveillance.htm>).

The Alcohol Research Group provides AEDS with time-varying ABVs annually and derives

the estimates for each beverage type based on three data components: (1) market shares for subcategories within beverage type (e.g., table wine and wine coolers within wine); (2) market shares for leading brands in each subcategory; and (3) ethanol contents of these leading brands. These calculations follow the methodology developed by Kerr et al. (2006a, b) and reported by Martinez et al. (2019).

### **Population Denominator**

In this report, AEDS uses the population of people ages 14 and older to calculate per capita consumption rates. Although age 14 is below the minimum legal age for purchasing alcoholic beverages throughout the United States, most self-report surveys indicate that many people drink alcoholic beverages at age 14. For example, data from the NIAAA 2012–2013 National Epidemiologic Survey on Alcohol and Related Conditions indicate that 9.56 percent of current drinkers ages 18 and older in the United States began drinking at age 14 or younger (Chen et al. 2016). Results from the Monitoring the Future survey in 2022 (Johnston et al. 2023) indicate that 15.2 percent of eighth graders (students ages 13 to 14) reported past-year use of alcohol (i.e., beyond a few sips). Also, using data from the National Survey on Drug Use and Health 2017–2019, Chen and Yoon (2021) found the median age of initiation of alcohol use among people ages 12 to 20 to be age 14.9. Nonetheless, per capita consumption estimates for population ages 21 years and older are also provided in this report's data file (<https://pubs.niaaa.nih.gov/publications/surveillance.htm>).

### **Estimation of Per Capita Ethanol Consumption**

Per capita ethanol consumption rates for each beverage type are calculated by multiplying national, State, or regional beverage volume by the corresponding ABV and dividing by the national, State, or regional population ages 14 and older. Per capita ethanol consumption of all beverages is calculated directly from the

estimated gallons of ethanol for all beverages divided by the population.

Percentage change calculations in this report are based on the numbers presented in the tables, which are rounded to two decimal places.

Per capita ethanol consumption rates based on the alternative time-varying ABVs can be derived from this report's data file

(<https://pubs.niaaa.nih.gov/publications/surveillance.htm>) by dividing gallons of ethanol consumed by the corresponding population of interest (i.e., ages 14 and older or ages 21 and older). For example, per capita consumption of ethanol from all alcoholic beverages combined in 2022 was 2.34 gallons (among ages 14 and older) using the time-varying ABVs.

### **Limitations**

Readers familiar with survey reports and other scientific literature are accustomed to the presentation of significance tests, or confidence intervals, on any data comparisons or trends. However, because data presented in this report are based on total actual sales and/or shipments, AEDS does not provide measures of statistical significance. Nonetheless, it is important to note that these data are still only estimates and may be subject to reporting error and random fluctuation over time.

In addition to ABVs, many factors may result in inaccuracies of per capita alcohol consumption estimates. For instance, these estimates in some States may be inflated by such factors as cross-border sales to buyers from neighboring States (e.g., in New Hampshire) or tourist consumption of alcohol (e.g., in Nevada and Washington, D.C.). Other factors include variation in State reporting practices for sales of alcoholic beverages; time delay between State taxation records and actual consumption; exclusion of alcohol contained in medications and foods; unrecorded legal home production; and illicit production, importation, and sales (Rehm et al. 2014). These factors are discussed in detail in the AEDS data reference manual on

per capita alcohol consumption (Nephew et al. 2004). Note that the word *apparent* in this report's title is pertinent, because the estimates in this report are based on the reported volumes of alcoholic beverages released to the market for sale and not on actual measures of people's alcohol consumption.

## REFERENCES

- Beverage Information Group. *Beer Handbook, 2023*. Norwalk, CT: Beverage Information Group, 2023a.
- Beverage Information Group. *Liquor Handbook, 2023*. Norwalk, CT: Beverage Information Group, 2023b.
- Beverage Information Group. *Wine Handbook, 2023*. Norwalk, CT: Beverage Information Group, 2023c.
- Campbell, K.E.; Clem, D.; and Williams, G.D. *Technical Report: 1986–91 Per Capita Ethanol Consumption Trends Using Beverage Industry Shipments Data Compared to Combined Sales/Tax Receipt and Shipments Data*. Washington, DC: NIAAA, 1994.
- Chen, C.M.; Slater, M.E.; Castle, I-J.P.; and Grant, B.F. *Alcohol Use and Alcohol Use Disorders in the United States: Main Findings from the 2012–2013 National Epidemiologic Survey on Alcohol and Related Conditions-III (NESARC-III)*. National Institutes of Health (NIH) Publication No. 16-AA-8020. U.S. Alcohol Epidemiologic Data Reference Manual, Vol. 10. Bethesda, MD: NIAAA, 2016.
- Chen, C.M., and Yoon, Y-H. *Surveillance Report #116: Trends in Underage Drinking in the United States, 1991–2019*. Bethesda, MD: NIAAA, 2021.
- Doernberg, D., and Stinson, F.S. *U.S. Apparent Consumption of Alcoholic Beverages Based on State Sales, Taxation, or Receipt Data* (U.S. Alcohol Epidemiologic Data Reference Manual, Vol. 1). Washington, DC: U.S. Government Printing Office, September 1985.
- Haughwout, S.P.; Castle, I-J.P.; and LaVallee, R.A. *Comparison of State Alcoholic Beverage Sales Data with Industry Shipment Data, 2001–2013: Apparent Per Capita Alcohol Consumption Surveillance Report Methodological Addendum*. Bethesda, MD: NIAAA, 2015. Available at: [https://pubs.niaaa.nih.gov/publications/surveillance102/m\\_addendum.pdf](https://pubs.niaaa.nih.gov/publications/surveillance102/m_addendum.pdf).
- Hyman, M.; Zimmerman, M.; Gurioli, C.; and Helrich, A. *Drinkers, Drinking and Alcohol-Related Mortality and Hospitalizations: A Statistical Compendium, 1980 ed.* New Brunswick, NJ: Rutgers University, 1980.
- Johnston, L.D.; Miech, R.A.; Patrick, M.E.; O'Malley, P.M.; Schulenberg, J.E.; and Bachman, J.G. *Monitoring the Future National Survey Results on Drug Use, 1975–2022: Overview, Key Findings on Adolescent Drug Use*. Ann Arbor, MI: Institute for Social Research, University of Michigan, 2023.
- Kerr, W.C.; Greenfield, T.K.; Tujague, J.; and Brown, S.E. The alcohol content of wine consumed in the US and per capita consumption: New estimates reveal different trends. *Alcoholism: Clinical and Experimental Research* 30(3):516–522, 2006a.
- Kerr, W.C.; Greenfield, T.K.; and Tujague, J. Estimates of the mean alcohol concentration of the spirits, wine, and beer sold in the United States and per capita consumption: 1950 to 2002. *Alcoholism: Clinical and Experimental Research* 30(9):1583–1591, 2006b.
- Martinez, P.; Kerr, W.C.; Subbaraman, M.S.; and Roberts, S.C.M. New estimates of the mean alcohol content of beer, wine, and spirits sold in the United States show a greater increase in per capita alcohol consumption than previous estimates. *Alcoholism: Clinical and Experimental Research* 43(3):509–521, 2019.
- NIAAA. *Rethinking Drinking: Alcohol and Your Health*. Bethesda, MD: NIH, U.S. Department of Health and Human Services, 2022. Available at: <https://www.rethinkingdrinking.niaaa.nih.gov>.
- Nephew, T.M.; Yi, H.; Williams, G.D.; Stinson, F.S.; and Dufour, M.C. *U.S. Apparent Consumption of Alcoholic Beverages Based on State Sales, Taxation, or Receipt Data* (U.S. Alcohol Epidemiologic Data Reference Manual, Vol. 1, 4th ed.). NIH Publication No. 04-5563. Bethesda, MD: NIAAA, 2004.
- Rehm, J.; Kailasapillai, S.; Larsen, E.; Rehm, M.X.; Samokhvalov, A.V.; Shield, K.D.; Roerecke, M.; and Lachenmeier, D.W. A systematic review of the epidemiology of unrecorded alcohol consumption and the chemical composition of unrecorded alcohol. *Addiction* 109:880–893, 2014.
- Single-race Population Estimates, United States July 1<sup>st</sup> resident population by state, age, sex, single-race, and Hispanic Origin, on CDC WONDER Online Database. Vintage 2022 (2020–2022) estimates released by U.S. Census Bureau on June 22, 2023; Vintage 2020 (2010–2020) estimates released by U.S. Census Bureau on July 27, 2021. Available at: <https://wonder.cdc.gov/single-race-population.html>.
- Slater, M.E., and Alpert, H.R. *Surveillance Report #120: Apparent Per Capita Alcohol Consumption: National, State, and Regional Trends, 1977–2021*. Bethesda, MD: NIAAA, 2023.
- U.S. Department of Health and Human Services, CDC, National Center for Health Statistics (NCHS). *Bridged-Race Population Estimates, United States July 1st Resident Population by State, County, Age, Sex, Bridged-Race, and Hispanic Origin*. Compiled from 1990–1999 bridged-race intercensal population estimates (released by NCHS on 7/26/2004) and revised bridged-race 2000–2009 intercensal population estimates (released by NCHS on 10/26/2012). Available on CDC WONDER Online Database at: <https://wonder.cdc.gov/Bridged-Race-v2020.HTML>.

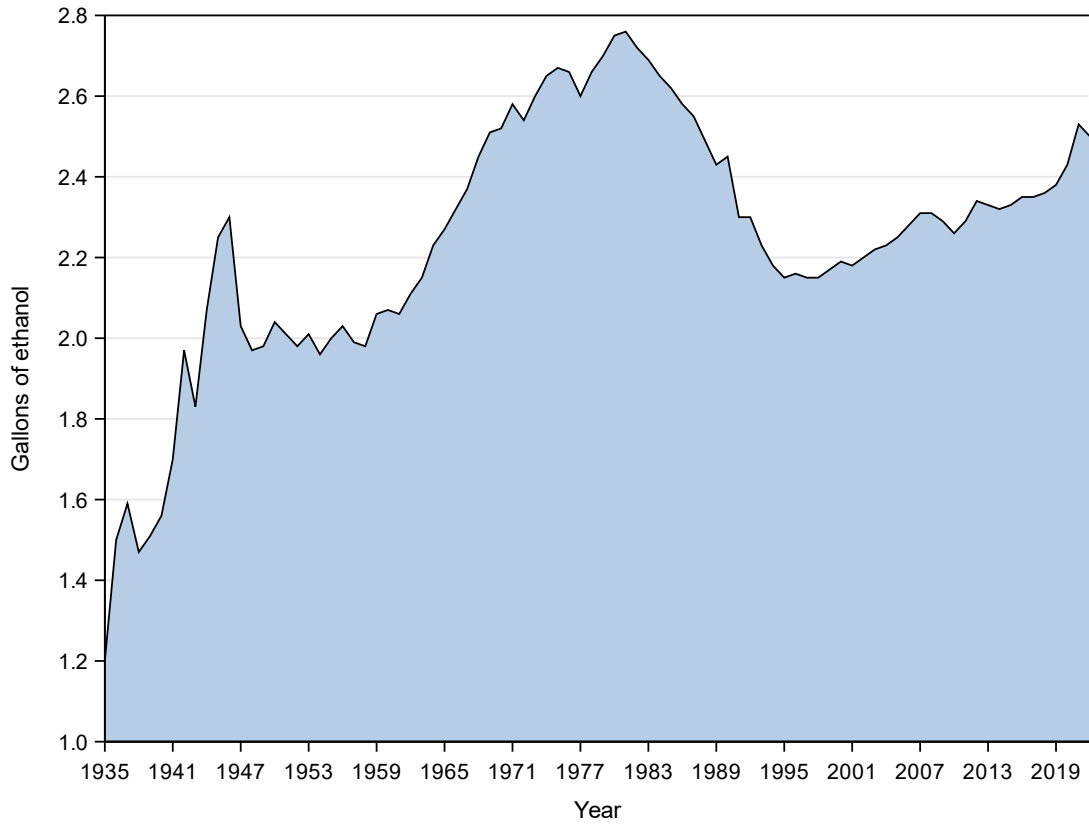
## List of Figures

		Page
Figure 1	Total per capita ethanol consumption, United States, 1935–2022 .....	6
Figure 2	Per capita ethanol consumption by beverage type, United States, 1977–2022 ..	6
Figure 3	Percentage change in per capita ethanol consumption, United States, 1977–2022 .....	7
Figure 4	Total per capita consumption of gallons of ethanol by State, United States, 2022 .....	8
Figure 5	Percentage change in total per capita ethanol consumption by State, United States, 2021–2022 .....	8
Figure 6	Total per capita ethanol consumption by region, United States, 1977–2022 .....	9
Figure 7	Per capita ethanol consumption from beer by region, United States, 1977–2022 .....	9
Figure 8	Per capita ethanol consumption from wine by region, United States, 1977–2022 .....	10
Figure 9	Per capita ethanol consumption from spirits by region, United States, 1977–2022 .....	10

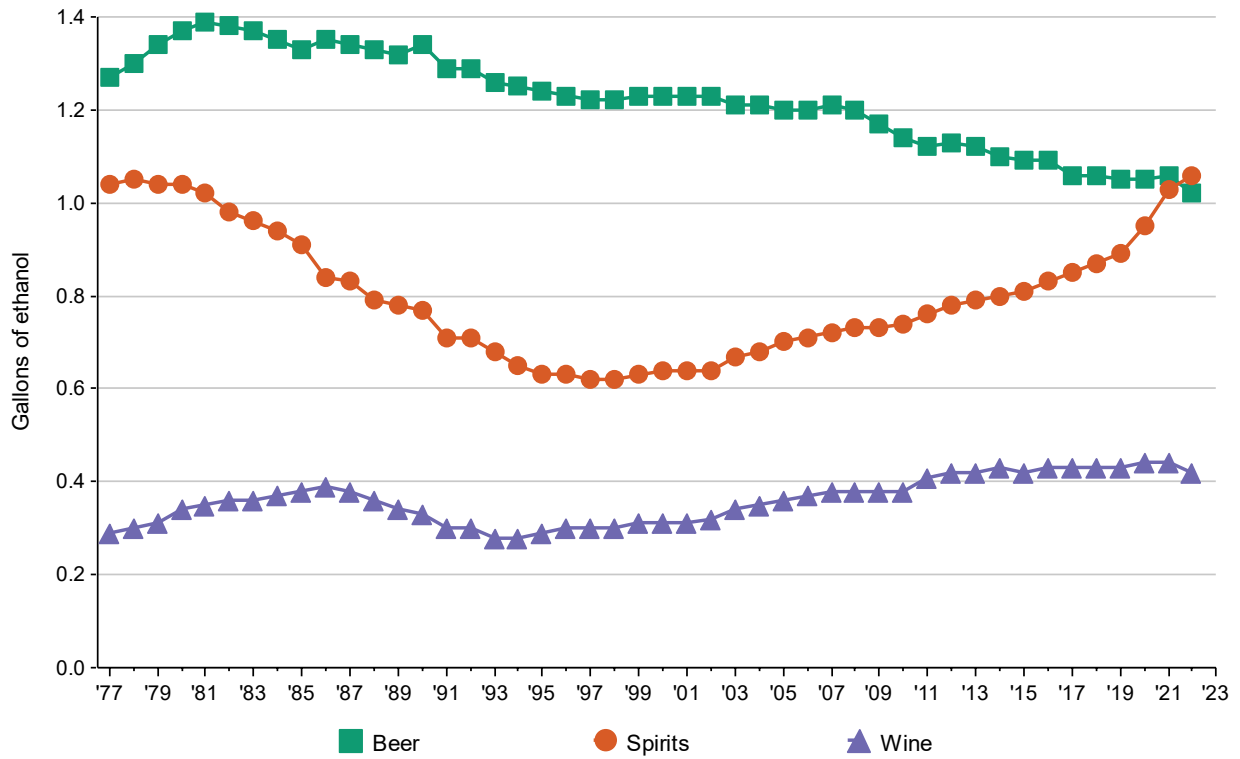
## List of Tables

		Page
Table 1	Apparent per capita ethanol consumption, United States, 1850–2022 .....	11
Table 2	Apparent alcohol consumption for States, census regions, and the United States, 2022 .....	13
Table 3	Sources of alcoholic beverages sales and shipment data by State and beverage type, 2022 .....	15
Table 4	Per capita ethanol consumption for States, census regions, and the United States, 1977–2022 .....	17

**Figure 1.** Total per capita ethanol consumption, United States, 1935–2022

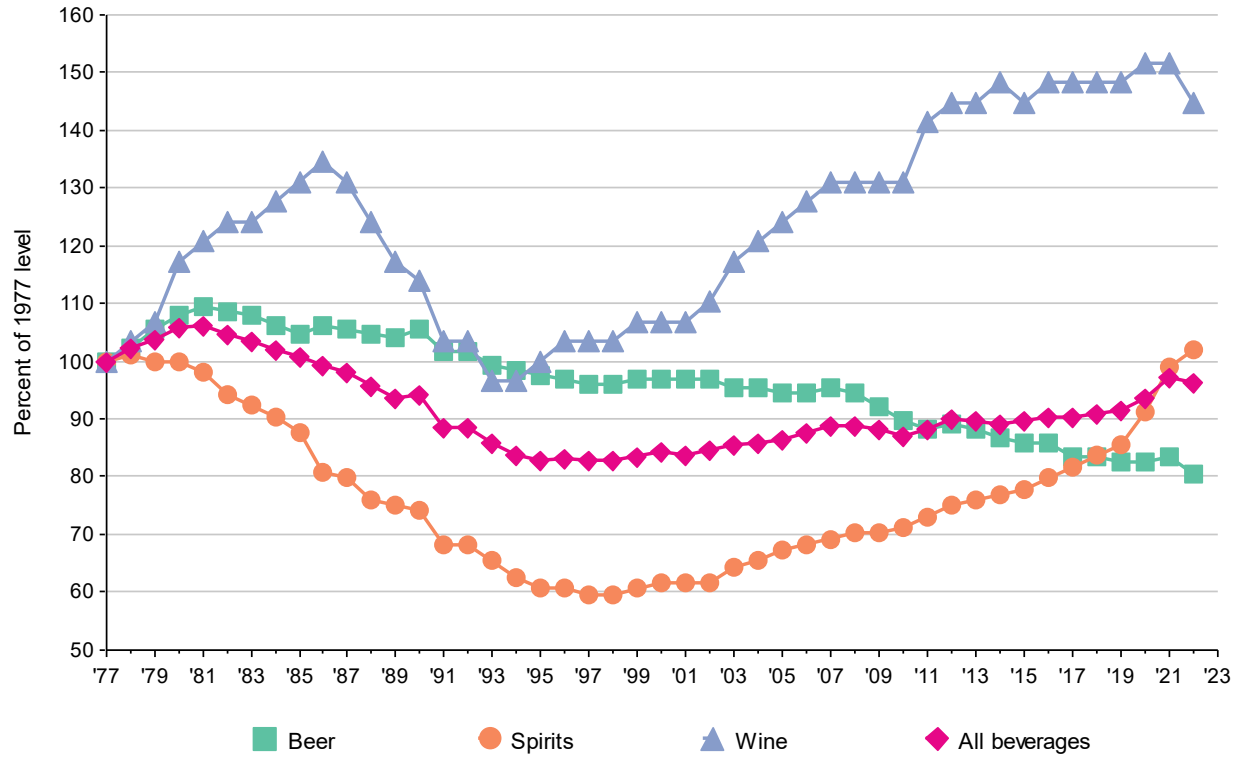


**Figure 2.** Per capita ethanol consumption by beverage type, United States, 1977–2022

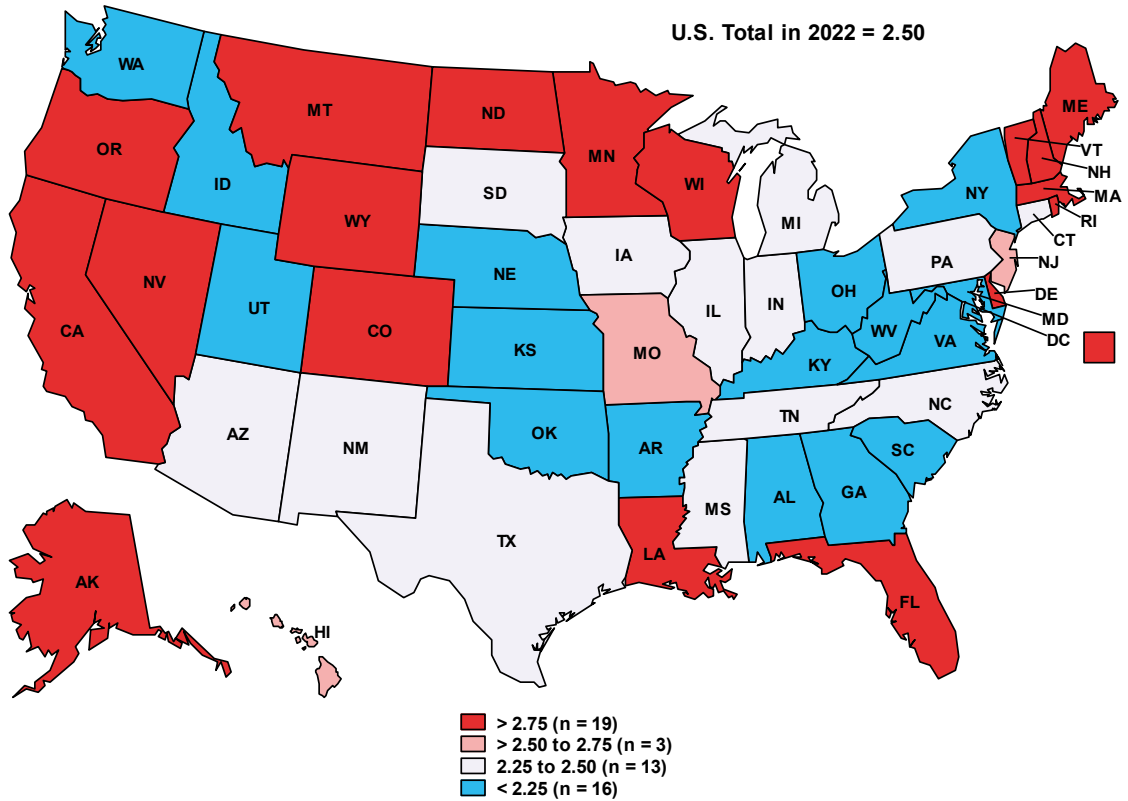




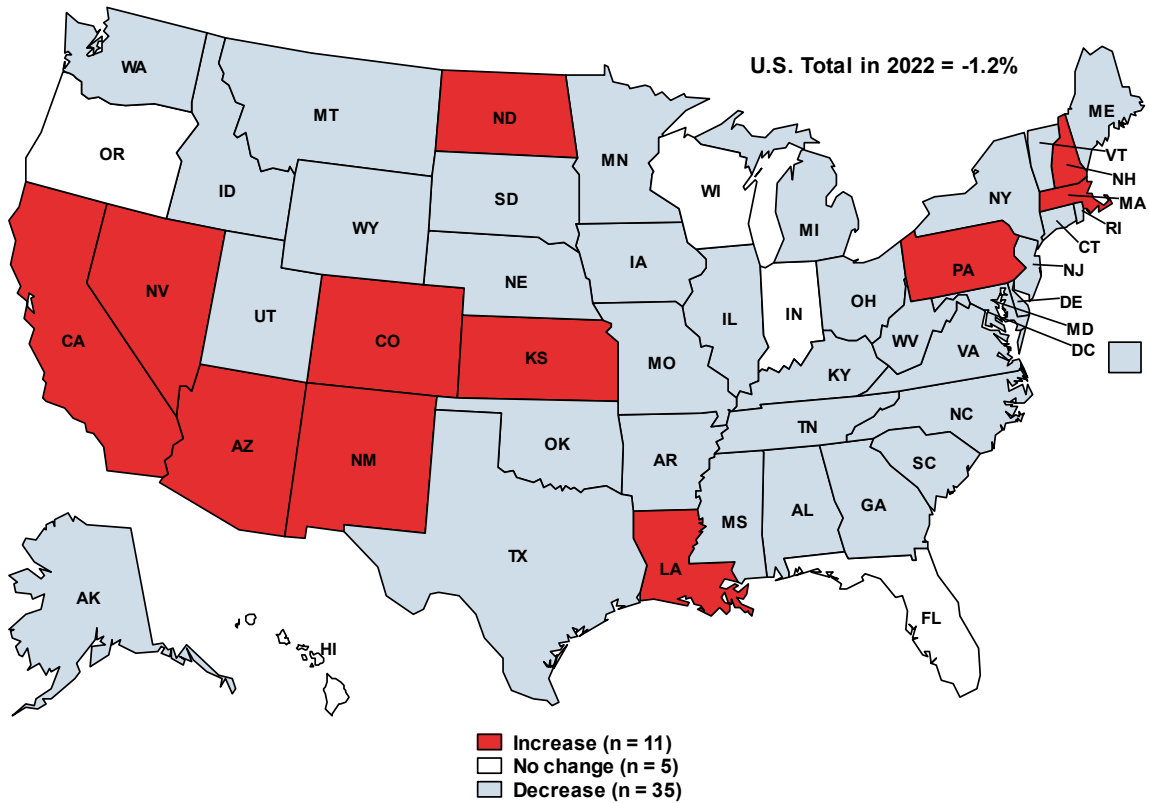
**Figure 3.** Percentage change in per capita ethanol consumption, United States, 1977–2022



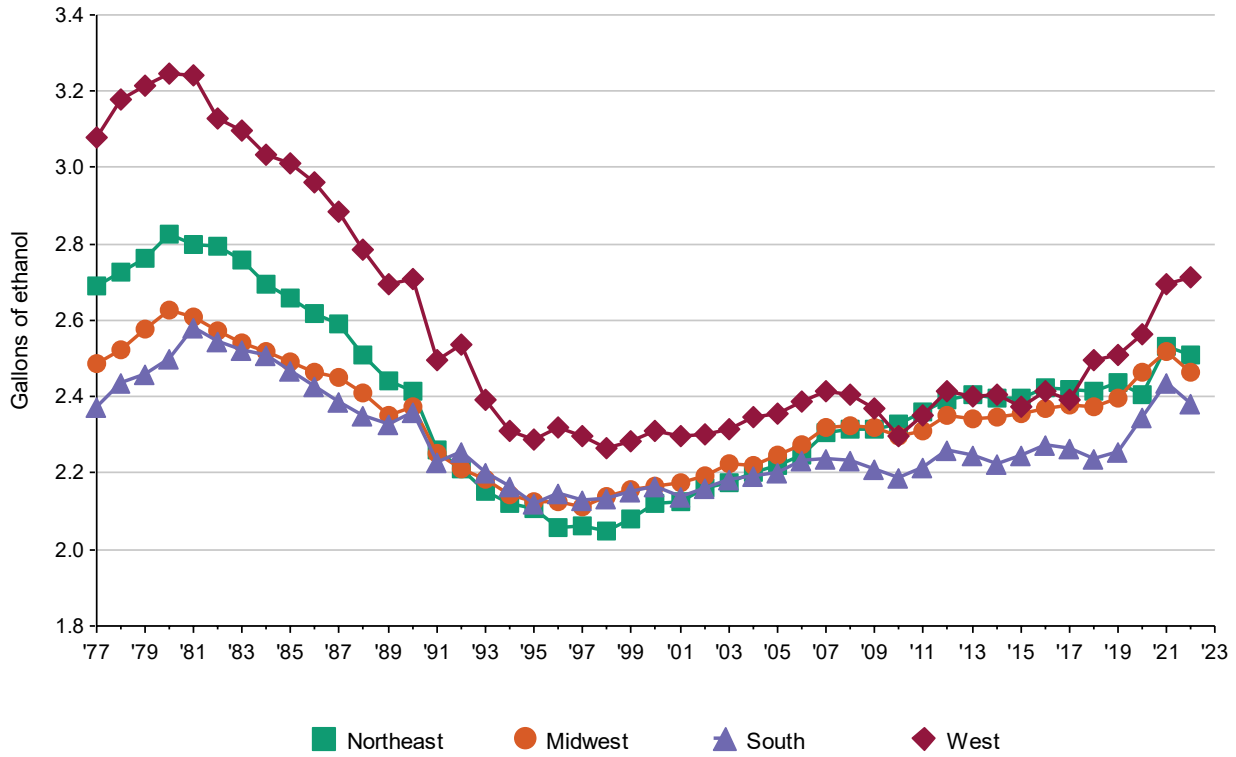
**Figure 4.** Total per capita consumption of gallons of ethanol by State, United States, 2022



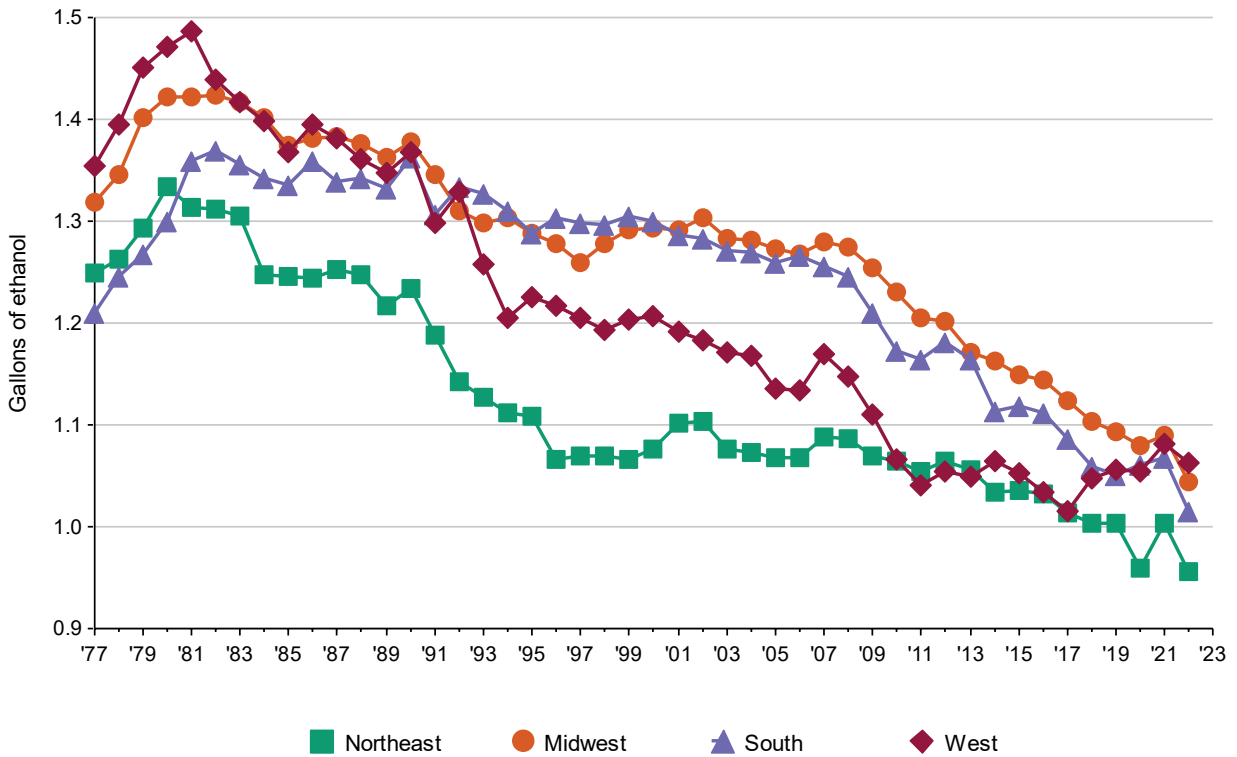
**Figure 5.** Percentage change in total per capita ethanol consumption by State, United States, 2021–2022



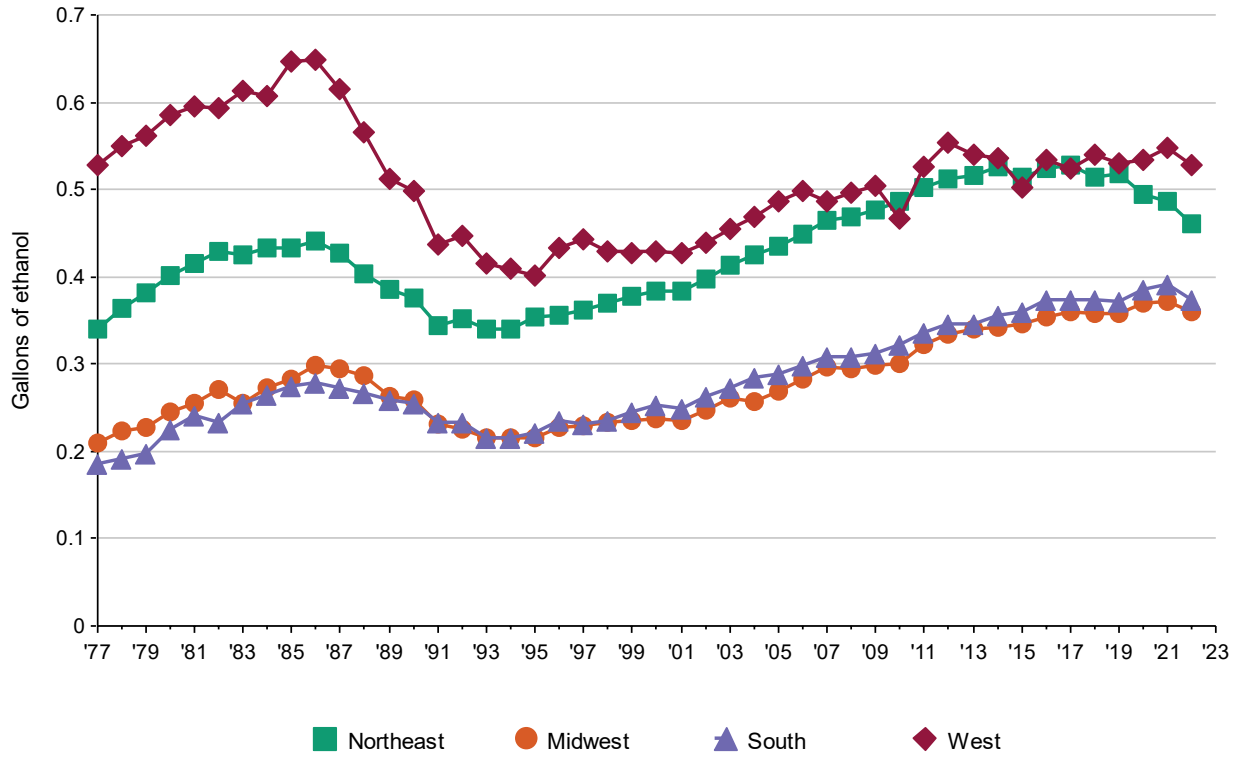
**Figure 6.** Total per capita ethanol consumption by region, United States, 1977–2022



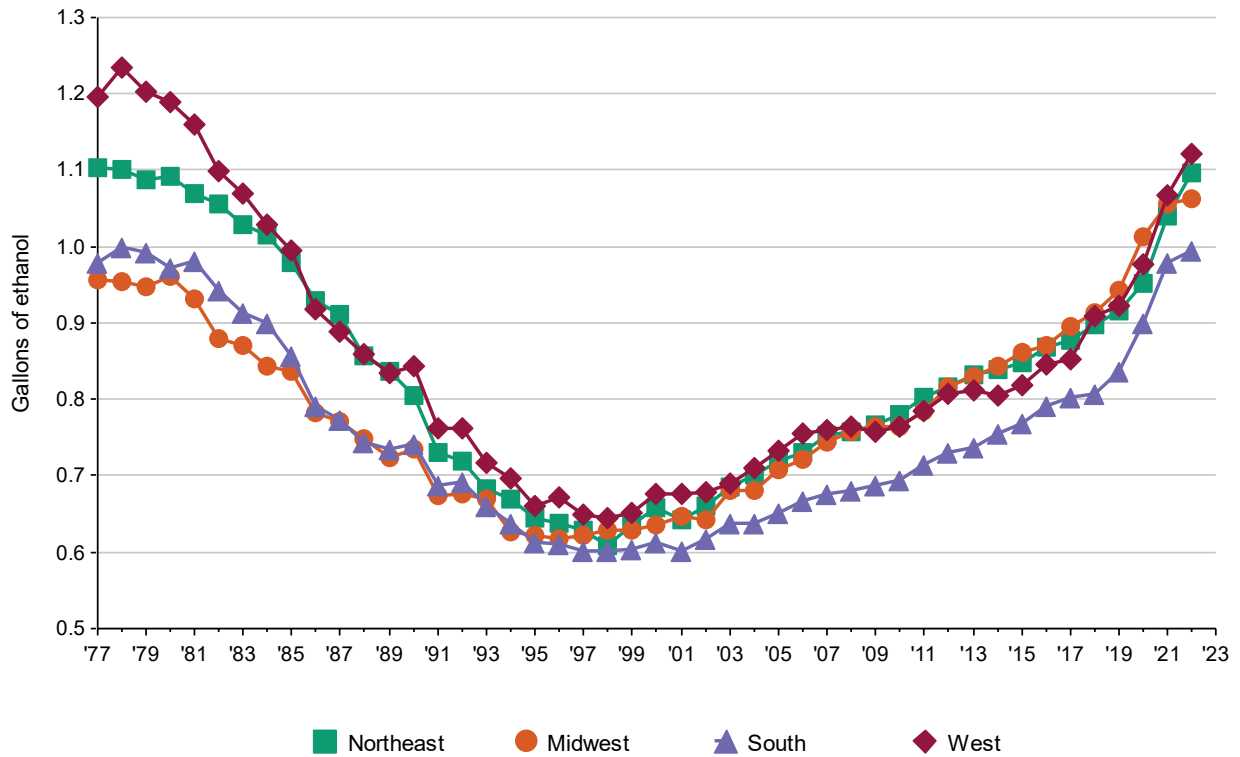
**Figure 7.** Per capita ethanol consumption from beer by region, United States, 1977–2022



**Figure 8.** Per capita ethanol consumption from wine by region, United States, 1977–2022



**Figure 9.** Per capita ethanol consumption from spirits by region, United States, 1977–2022



**Table 1.** Apparent per capita ethanol consumption, United States, 1850–2022. (Gallons of ethanol based on population ages 15 and older prior to 1970 and on population ages 14 and older thereafter.)

Year	Beer	Wine	Spirits	All beverages
2022.....	1.02	0.42	1.06	2.50
2021.....	1.06	0.44	1.03	2.53
2020.....	1.05	0.44	0.95	2.43
2019.....	1.05	0.43	0.89	2.38
2018.....	1.06	0.43	0.87	2.36
2017.....	1.06	0.43	0.85	2.35
2016.....	1.09	0.43	0.83	2.35
2015.....	1.09	0.42	0.81	2.33
2014.....	1.10	0.43	0.80	2.32
2013.....	1.12	0.42	0.79	2.33
2012.....	1.13	0.42	0.78	2.34
2011.....	1.12	0.41	0.76	2.29
2010.....	1.14	0.38	0.74	2.26
2009.....	1.17	0.38	0.73	2.29
2008.....	1.20	0.38	0.73	2.31
2007.....	1.21	0.38	0.72	2.31
2006.....	1.20	0.37	0.71	2.28
2005.....	1.20	0.36	0.70	2.25
2004.....	1.21	0.35	0.68	2.23
2003.....	1.21	0.34	0.67	2.22
2002.....	1.23	0.32	0.64	2.20
2001.....	1.23	0.31	0.64	2.18
2000.....	1.23	0.31	0.64	2.19
1999.....	1.23	0.31	0.63	2.17
1998.....	1.22	0.30	0.62	2.15
1997.....	1.22	0.30	0.62	2.15
1996.....	1.23	0.30	0.63	2.16
1995.....	1.24	0.29	0.63	2.15
1994.....	1.25	0.28	0.65	2.18
1993.....	1.26	0.28	0.68	2.23
1992.....	1.29	0.30	0.71	2.30
1991.....	1.29	0.30	0.71	2.30
1990.....	1.34	0.33	0.77	2.45
1989.....	1.32	0.34	0.78	2.43
1988.....	1.33	0.36	0.79	2.49
1987.....	1.34	0.38	0.83	2.55
1986.....	1.35	0.39	0.84	2.58
1985.....	1.33	0.38	0.91	2.62
1984.....	1.35	0.37	0.94	2.65
1983.....	1.37	0.36	0.96	2.69
1982.....	1.38	0.36	0.98	2.72
1981.....	1.39	0.35	1.02	2.76
1980.....	1.37	0.34	1.04	2.75
1979.....	1.34	0.31	1.04	2.70
1978.....	1.30	0.30	1.05	2.66
1977.....	1.27	0.29	1.04	2.60
1976.....	1.25	0.32	1.09	2.66
1975.....	1.25	0.32	1.10	2.67
1974.....	1.24	0.31	1.10	2.65
1973.....	1.20	0.31	1.10	2.60
1972.....	1.16	0.30	1.08	2.54
1971.....	1.15	0.31	1.12	2.58
1970.....	1.14	0.27	1.11	2.52
1969.....	1.12	0.26	1.13	2.51

Numbers may not sum because of rounding.

**Table 1.** Apparent per capita ethanol consumption, United States, 1850–2022. (Gallons of ethanol, based on population ages 15 and older prior to 1970 and on population ages 14 and older thereafter.) (Continued)

Year	Beer	Wine	Spirits	All beverages
1968 .....	1.09	0.26	1.10	2.45
1967 .....	1.07	0.25	1.05	2.37
1966 .....	1.06	0.24	1.02	2.32
1965 .....	1.04	0.24	0.99	2.27
1964 .....	1.01	0.24	0.95	2.23
1963 .....	1.01	0.23	0.91	2.15
1962 .....	0.99	0.22	0.90	2.11
1961 .....	0.97	0.23	0.86	2.06
1960 .....	0.99	0.22	0.86	2.07
1959 .....	1.00	0.22	0.84	2.06
1958 .....	0.96	0.22	0.80	1.98
1957 .....	0.97	0.22	0.80	1.99
1956 .....	1.00	0.22	0.81	2.03
1955 .....	1.01	0.22	0.77	2.00
1954 .....	1.01	0.21	0.74	1.96
1953 .....	1.04	0.20	0.77	2.01
1952 .....	1.04	0.21	0.73	1.98
1951 .....	1.03	0.20	0.78	2.01
1950 .....	1.04	0.23	0.77	2.04
1949 .....	1.06	0.22	0.70	1.98
1948 .....	1.07	0.20	0.70	1.97
1947 .....	1.11	0.16	0.76	2.03
1946 .....	1.07	0.24	0.99	2.30
1945 .....	1.17	0.20	0.88	2.25
1944 .....	1.13	0.18	0.76	2.07
1943 .....	1.00	0.17	0.66	1.83
1942 .....	0.90	0.22	0.85	1.97
1941 .....	0.81	0.18	0.71	1.70
1940 .....	0.73	0.16	0.67	1.56
1939 .....	0.75	0.14	0.62	1.51
1938 .....	0.75	0.13	0.59	1.47
1937 .....	0.82	0.13	0.64	1.59
1936 .....	0.79	0.12	0.59	1.50
1935 .....	0.68	0.09	0.43	1.20
1934 .....	0.61	0.07	0.29	0.97
(Prohibition)				
1916–1919 .....	1.08	0.12	0.76	1.96
1911–1915 .....	1.48	0.14	0.94	2.56
1906–1910 .....	1.47	0.17	0.96	2.60
1901–1905 .....	1.31	0.13	0.95	2.39
1896–1900 .....	1.19	0.10	0.77	2.06
1891–1895 .....	1.17	0.11	0.95	2.23
1881–1890 .....	0.90	0.14	0.95	1.99
1871–1880 .....	0.56	0.14	1.02	1.72
1870 .....	0.44	0.10	1.53	2.07
1860 .....	0.27	0.10	2.16	2.53
1850 .....	0.14	0.08	1.88	2.10

Numbers may not sum because of rounding.

Note: Data prior to 1977 are from Hyman et al. 1980.

**Table 2.** Apparent alcohol consumption for States, census regions, and the United States, 2022. (Volume and ethanol in thousands of gallons, per capita ethanol consumption in gallons, based on population ages 14 and older.)

State or other geographic area	Beer			Wine			Spirits			All beverages		
	Volume	Ethanol	Per capita	Volume	Ethanol	Per capita	Volume	Ethanol	Per capita	Ethanol	Per capita	U.S. decile
Alabama .....	89,404	4,023	0.95	7,766	1,002	0.24	8,355	3,434	0.81	8,459	2.00	9
Alaska .....	13,174	593	0.99	2,428	313	0.53	1,871	769	1.29	1,675	2.81	4
Arizona .....	140,926	6,342	1.03	18,311	2,362	0.38	14,869	6,111	0.99	14,815	2.40	6
Arkansas .....	51,419	2,314	0.92	4,458	575	0.23	4,812	1,978	0.79	4,867	1.93	10
California .....	797,599	35,892	1.10	156,026	20,127	0.62	92,196	37,893	1.16	93,912	2.88	3
Colorado.....	123,181	5,543	1.13	18,025	2,325	0.47	17,675	7,264	1.48	15,133	3.08	2
Connecticut .....	49,434	2,225	0.72	12,624	1,628	0.53	8,592	3,531	1.15	7,384	2.40	6
Delaware .....	20,096	904	1.05	4,537	585	0.68	4,890	2,010	2.34	3,499	4.07	1
Dist. of Columb. ....	14,260	642	1.13	4,639	598	1.05	2,660	1,093	1.92	2,333	4.10	1
Florida .....	439,788	19,790	1.04	83,186	10,731	0.57	62,979	25,884	1.36	56,406	2.97	2
Georgia .....	177,568	7,991	0.89	17,391	2,243	0.25	18,204	7,482	0.83	17,716	1.96	9
Hawaii .....	33,108	1,490	1.23	5,468	705	0.58	2,598	1,068	0.88	3,263	2.70	5
Idaho .....	26,009	1,170	0.74	3,582	462	0.29	3,405	1,399	0.88	3,032	1.91	10
Illinois .....	233,706	10,517	1.00	39,508	5,097	0.48	23,940	9,839	0.93	25,453	2.42	5
Indiana .....	118,649	5,339	0.95	15,725	2,029	0.36	13,750	5,651	1.00	13,019	2.31	7
Iowa.....	69,630	3,133	1.18	4,459	575	0.22	6,364	2,615	0.99	6,324	2.39	6
Kansas .....	56,716	2,552	1.06	2,735	353	0.15	5,812	2,389	0.99	5,294	2.20	8
Kentucky .....	76,887	3,460	0.92	6,504	839	0.22	9,656	3,969	1.06	8,268	2.21	8
Louisiana.....	103,819	4,672	1.24	9,635	1,243	0.33	11,044	4,539	1.20	10,454	2.77	4
Maine .....	34,069	1,533	1.28	3,948	509	0.42	3,446	1,416	1.18	3,459	2.88	3
Maryland .....	72,039	3,242	0.63	13,486	1,740	0.34	14,032	5,767	1.12	10,748	2.09	9
Massachusetts .....	106,470	4,791	0.80	26,173	3,376	0.57	21,112	8,677	1.45	16,845	2.82	3
Michigan .....	175,155	7,882	0.93	25,347	3,270	0.39	21,794	8,957	1.06	20,109	2.38	6
Minnesota.....	111,429	5,014	1.06	14,315	1,847	0.39	16,107	6,620	1.40	13,481	2.85	3
Mississippi.....	61,535	2,769	1.14	3,651	471	0.19	5,396	2,218	0.91	5,458	2.25	7
Missouri.....	119,121	5,360	1.04	14,144	1,825	0.35	16,869	6,933	1.35	14,118	2.75	4
Montana .....	33,110	1,490	1.58	3,657	472	0.50	2,614	1,074	1.14	3,036	3.21	2
Nebraska.....	38,781	1,745	1.09	2,571	332	0.21	3,373	1,386	0.86	3,463	2.16	8
Nevada.....	76,663	3,450	1.30	11,787	1,521	0.57	11,526	4,737	1.78	9,708	3.66	1
New Hampshire .....	44,620	2,008	1.66	7,503	968	0.80	5,919	2,433	2.02	5,409	4.48	1

Decile values (1 = highest) apply only to State-level data. Numbers may not sum because of rounding.

**Table 2.** Apparent alcohol consumption for States, census regions, and the United States, 2022. (Volume and ethanol in thousands of gallons, per capita ethanol consumption in gallons, based on population ages 14 and older.) (Continued)

State or other geographic area	Beer			Wine			Spirits			All beverages		
	Volume	Ethanol	Per capita	Volume	Ethanol	Per capita	Volume	Ethanol	Per capita	Ethanol	Per capita	U.S. decile
New Jersey .....	127,405	5,733	0.74	30,442	3,927	0.51	24,170	9,934	1.28	19,594	2.53	5
New Mexico .....	46,097	2,074	1.17	4,144	535	0.30	3,943	1,621	0.92	4,230	2.39	6
New York .....	304,862	13,719	0.83	59,270	7,646	0.46	38,755	15,928	0.96	37,293	2.24	7
North Carolina ..	204,646	9,209	1.03	33,824	4,363	0.49	17,942	7,374	0.82	20,946	2.34	7
North Dakota ...	19,580	881	1.38	1,507	194	0.31	2,506	1,030	1.62	2,106	3.31	1
Ohio .....	233,957	10,528	1.07	23,252	2,999	0.31	17,016	6,994	0.71	20,521	2.09	9
Oklahoma .....	68,696	3,091	0.94	4,624	596	0.18	6,104	2,509	0.76	6,197	1.88	10
Oregon .....	97,071	4,368	1.21	15,880	2,049	0.57	8,948	3,677	1.02	10,094	2.80	4
Pennsylvania ...	324,136	14,586	1.33	25,427	3,280	0.30	22,159	9,107	0.83	26,973	2.46	5
Rhode Island ...	15,372	692	0.74	3,756	485	0.52	3,503	1,440	1.53	2,616	2.78	4
South Carolina	98,673	4,440	1.00	8,193	1,057	0.24	9,631	3,958	0.89	9,455	2.13	9
South Dakota ..	20,708	932	1.26	1,178	152	0.21	1,465	602	0.81	1,686	2.28	7
Tennessee .....	132,406	5,958	1.01	15,299	1,974	0.34	15,242	6,264	1.07	14,196	2.41	5
Texas .....	619,845	27,893	1.15	62,441	8,055	0.33	52,319	21,503	0.88	57,451	2.36	6
Utah .....	29,481	1,327	0.50	3,480	449	0.17	3,688	1,516	0.57	3,291	1.23	10
Vermont .....	19,251	866	1.54	3,113	402	0.72	1,096	450	0.80	1,718	3.06	2
Virginia .....	144,092	6,484	0.89	28,727	3,706	0.51	13,738	5,646	0.78	15,836	2.18	8
Washington .....	122,419	5,509	0.84	24,776	3,196	0.49	14,196	5,834	0.89	14,539	2.23	8
West Virginia ...	36,797	1,656	1.10	1,231	159	0.11	2,093	860	0.57	2,675	1.77	10
Wisconsin .....	130,758	5,884	1.19	15,090	1,947	0.39	19,143	7,868	1.59	15,698	3.17	2
Wyoming .....	12,929	582	1.20	1,073	138	0.29	1,698	698	1.44	1,418	2.93	3
<i>Regions</i>												
Northeast .....	1,025,620	46,153	0.96	172,254	22,221	0.46	128,752	52,917	1.10	121,291	2.51	
Midwest .....	1,328,190	59,769	1.04	159,830	20,618	0.36	148,139	60,885	1.06	141,272	2.47	
South .....	2,411,969	108,539	1.01	309,592	39,937	0.37	259,096	106,488	1.00	254,964	2.38	
West .....	1,551,767	69,830	1.06	268,637	34,654	0.53	179,227	73,662	1.12	178,146	2.71	
U.S. total .....	6,317,546	284,290	1.02	910,314	117,430	0.42	715,214	293,953	1.06	695,673	2.50	

Decile values (1 = highest) apply only to State-level data. Numbers may not sum because of rounding.



**Table 3.** Sources of alcoholic beverage sales or shipment data by State and beverage type, 2022.

State	Beer	Wine	Spirits
Alabama .....	Industry	Industry	State <sup>5</sup>
Alaska.....	State <sup>1</sup>	State <sup>1</sup>	State <sup>1</sup>
Arizona .....	Industry	Industry	Industry
Arkansas .....	State <sup>2</sup>	State <sup>2</sup>	State <sup>2</sup>
California .....	Industry	Industry	Industry
Colorado.....	State <sup>1</sup>	State <sup>1</sup>	State <sup>1</sup>
Connecticut .....	State <sup>1</sup>	State <sup>1</sup>	State <sup>1</sup>
Delaware .....	State <sup>1</sup>	State <sup>1</sup>	State <sup>1</sup>
Dist. of Columbia .....	Industry	Industry	Industry
Florida .....	State <sup>1</sup>	State <sup>1</sup>	State <sup>1</sup>
Georgia.....	Industry	Industry	Industry
Hawaii.....	Industry	Industry	Industry
Idaho .....	Industry	Industry	State <sup>5</sup>
Illinois .....	State <sup>1</sup>	State <sup>1</sup>	State <sup>1</sup>
Indiana.....	State <sup>1</sup>	State <sup>1</sup>	State <sup>1</sup>
Iowa.....	State <sup>3</sup>	State <sup>3</sup>	State <sup>3</sup>
Kansas .....	State <sup>2</sup>	Industry	State <sup>2</sup>
Kentucky.....	State <sup>2</sup>	State <sup>2</sup>	State <sup>2</sup>
Louisiana .....	Industry	State <sup>1</sup>	State <sup>1</sup>
Maine.....	Industry	Industry	State <sup>5</sup>
Maryland.....	State <sup>1</sup>	State <sup>3</sup>	State <sup>3</sup>
Massachusetts .....	State <sup>1</sup>	State <sup>1</sup>	State <sup>1</sup>
Michigan .....	State <sup>1</sup>	State <sup>3</sup>	State <sup>5</sup>
Minnesota.....	State <sup>1</sup>	State <sup>1</sup>	State <sup>1</sup>
Mississippi.....	Industry	State <sup>5</sup>	State <sup>5</sup>
Missouri.....	State <sup>2</sup>	State <sup>2</sup>	State <sup>2</sup>
Montana .....	State <sup>1</sup>	State <sup>1</sup>	State <sup>3</sup>
Nebraska .....	Industry	Industry	Industry
Nevada .....	Industry	Industry	Industry
New Hampshire.....	State <sup>3</sup>	State <sup>3</sup>	State <sup>3</sup>
New Jersey.....	State <sup>3</sup>	State <sup>3</sup>	State <sup>3</sup>
New Mexico.....	Industry	Industry	Industry
New York.....	State <sup>2</sup>	State <sup>2</sup>	State <sup>2</sup>
North Carolina .....	State <sup>2</sup>	State <sup>2</sup>	State <sup>5</sup>
North Dakota .....	State <sup>1</sup>	State <sup>1</sup>	State <sup>1</sup>

**Table 3.** Sources of alcoholic beverage sales or shipment data by State and beverage type, 2022. (Continued)

State	Beer	Wine	Spirits
Ohio.....	Industry	Industry	State <sup>5</sup>
Oklahoma.....	Industry	Industry	Industry
Oregon.....	State <sup>1</sup>	State <sup>1</sup>	State <sup>5</sup>
Pennsylvania.....	Industry	State <sup>3</sup>	State <sup>3</sup>
Rhode Island.....	State <sup>1</sup>	State <sup>1</sup>	State <sup>1</sup>
South Carolina.....	Industry	Industry	Industry
South Dakota.....	Industry	Industry	Industry
Tennessee.....	State <sup>2</sup>	State <sup>2</sup>	State <sup>2</sup>
Texas.....	State <sup>1</sup>	State <sup>1</sup>	State <sup>1</sup>
Utah.....	Industry	State <sup>1</sup>	State <sup>1</sup>
Vermont.....	Industry	Industry	State <sup>5</sup>
Virginia.....	State <sup>1</sup>	State <sup>1</sup>	State <sup>1</sup>
Washington.....	Industry	Industry	State <sup>3</sup>
West Virginia.....	Industry	Industry	State <sup>5</sup>
Wisconsin.....	Industry	State <sup>1</sup>	State <sup>1</sup>
Wyoming.....	State <sup>1</sup>	State <sup>5</sup>	State <sup>5</sup>

Note: Industry shipment data are from the reports produced by the Beverage Information Group (2023a, b, c). State data are from each State's department of revenue, department of taxation, or alcoholic beverage commission, or the National Alcohol Beverage Control Association (NABCA).

<sup>1</sup> State monthly sales volume data.

<sup>2</sup> State monthly sales tax data.

<sup>3</sup> State annual sales volume data.

<sup>4</sup> State annual sales tax data.

<sup>5</sup> NABCA annual sales volume data.

**Table 4.** Per capita ethanol consumption for States, census regions, and the United States, 1977–2022. (Gallons of ethanol, based on population ages 14 and older.)

State or other geographic area	Per capita consumption				U.S. decile for all beverages
	Beer	Wine	Spirits	All beverages	
Alabama					
2022.....	0.95	0.24	0.81	2.00	9
2021.....	1.01	0.25	0.81	2.07	9
2020.....	1.02	0.25	0.77	2.04	9
2019.....	1.02	0.26	0.71	1.99	9
2018.....	1.04	0.26	0.69	1.99	9
2017.....	1.07	0.26	0.67	1.99	9
2016.....	1.09	0.26	0.65	2.01	9
2015.....	1.11	0.26	0.64	2.01	9
2014.....	1.13	0.25	0.62	1.99	9
2013.....	1.14	0.25	0.60	1.99	9
2012.....	1.16	0.24	0.60	2.00	9
2011.....	1.16	0.24	0.59	1.98	9
2010.....	1.17	0.23	0.58	1.98	9
2009.....	1.19	0.22	0.57	1.98	9
2008.....	1.22	0.22	0.57	2.01	9
2007.....	1.23	0.22	0.55	2.00	9
2006.....	1.21	0.21	0.54	1.95	9
2005.....	1.18	0.20	0.53	1.91	9
2004.....	1.19	0.20	0.52	1.91	9
2003.....	1.19	0.19	0.52	1.90	9
2002.....	1.18	0.21	0.54	1.92	9
2001.....	1.16	0.17	0.53	1.86	9
2000.....	1.19	0.18	0.51	1.88	9
1999.....	1.18	0.17	0.51	1.87	9
1998.....	1.16	0.17	0.51	1.85	9
1997.....	1.14	0.16	0.52	1.82	9
1996.....	1.17	0.18	0.53	1.88	8
1995.....	1.14	0.16	0.53	1.82	9
1994.....	1.16	0.17	0.54	1.87	9
1993.....	1.14	0.17	0.56	1.86	9
1992.....	1.02	0.19	0.59	1.79	10
1991.....	1.00	0.17	0.59	1.76	10
1990.....	1.12	0.18	0.61	1.92	9
1989.....	1.12	0.17	0.61	1.90	9
1988.....	1.12	0.19	0.62	1.92	9
1987.....	1.11	0.18	0.62	1.91	9
1986.....	1.10	0.18	0.65	1.92	9
1985.....	1.07	0.17	0.67	1.92	9
1984.....	1.03	0.19	0.69	1.91	9
1983.....	1.01	0.17	0.72	1.90	10
1982.....	1.00	0.18	0.72	1.90	10
1981.....	1.00	0.19	0.73	1.91	10
1980.....	0.95	0.16	0.74	1.86	10
1979.....	0.96	0.12	0.82	1.90	10
1978.....	0.95	0.12	0.85	1.92	9
1977.....	0.97	0.12	0.82	1.92	9
Alaska					
2022.....	0.99	0.53	1.29	2.81	4
2021.....	1.05	0.51	1.34	2.90	3
2020.....	1.02	0.51	1.29	2.82	3
2019.....	1.07	0.53	1.27	2.87	2
2018.....	1.07	0.53	1.25	2.85	2

Decile values (1 = highest) apply only to State-level data. Numbers may not sum because of rounding.

**Table 4.** Per capita ethanol consumption for States, census regions, and the United States, 1977–2022. (Gallons of ethanol, based on population ages 14 and older.) (Continued)

State or other geographic area	Per capita consumption				U.S. decile for all beverages
	Beer	Wine	Spirits	All beverages	
2017.....	1.06	0.53	1.21	2.79	3
2016.....	1.15	0.56	1.23	2.94	2
2015.....	1.11	0.53	1.20	2.84	2
2014.....	1.11	0.52	1.16	2.79	2
2013.....	1.07	0.52	1.16	2.75	3
2012.....	1.17	0.53	1.13	2.83	2
2011.....	1.15	0.54	1.17	2.86	2
2010.....	1.23	0.55	1.25	3.03	1
2009.....	1.32	0.54	1.16	3.02	1
2008.....	1.20	0.49	1.09	2.78	2
2007.....	1.13	0.44	0.96	2.53	4
2006.....	1.25	0.47	1.03	2.75	2
2005.....	1.23	0.43	0.98	2.64	2
2004.....	1.31	0.44	0.95	2.71	2
2003.....	1.27	0.37	0.79	2.43	4
2002.....	1.35	0.45	1.19	2.99	1
2001.....	1.32	0.38	0.96	2.67	2
2000.....	1.37	0.37	0.94	2.68	2
1999.....	1.40	0.38	0.95	2.74	1
1998.....	1.39	0.37	0.95	2.71	2
1997.....	1.31	0.36	0.88	2.56	2
1996.....	1.31	0.38	0.94	2.63	2
1995.....	1.45	0.39	1.02	2.86	1
1994.....	1.53	0.40	1.10	3.03	1
1993.....	1.31	0.32	0.92	2.55	2
1992.....	1.53	0.41	1.08	3.02	1
1991.....	1.54	0.43	1.14	3.11	1
1990.....	1.62	0.46	1.25	3.33	1
1989.....	1.52	0.44	1.19	3.15	1
1988.....	1.54	0.47	1.19	3.21	1
1987.....	1.60	0.52	1.26	3.38	1
1986.....	1.65	0.55	1.25	3.45	1
1985.....	1.63	0.56	1.48	3.68	1
1984.....	1.67	0.56	1.50	3.72	1
1983.....	1.71	0.59	1.65	3.95	1
1982.....	1.69	0.54	1.68	3.92	1
1981.....	1.68	0.56	1.79	4.02	1
1980.....	1.54	0.50	1.68	3.72	1
1979.....	1.48	0.46	1.63	3.58	1
1978.....	1.39	0.45	1.67	3.51	1
1977.....	1.19	0.42	1.69	3.30	2
Arizona					
2022.....	1.03	0.38	0.99	2.40	6
2021.....	1.08	0.40	0.91	2.39	6
2020.....	1.09	0.39	0.84	2.31	7
2019.....	1.06	0.38	0.80	2.23	6
2018.....	1.08	0.39	0.80	2.26	6
2017.....	1.11	0.39	0.79	2.30	6
2016.....	1.14	0.40	0.79	2.32	6
2015.....	1.16	0.40	0.79	2.35	6
2014.....	1.18	0.40	0.79	2.37	5
2013.....	1.12	0.42	0.81	2.35	5
2012.....	1.14	0.45	0.84	2.43	5
2011.....	1.15	0.44	0.80	2.39	5

Decile values (1 = highest) apply only to State-level data. Numbers may not sum because of rounding.

**Table 4.** Per capita ethanol consumption for States, census regions, and the United States, 1977–2022. (Gallons of ethanol, based on population ages 14 and older.) (Continued)

State or other geographic area	Per capita consumption				U.S. decile for all beverages
	Beer	Wine	Spirits	All beverages	
2010.....	1.23	0.41	0.76	2.39	5
2009.....	1.22	0.39	0.77	2.38	5
2008.....	1.30	0.41	0.77	2.48	4
2007.....	1.39	0.34	0.78	2.51	4
2006.....	1.34	0.38	0.79	2.51	4
2005.....	1.35	0.40	0.76	2.51	3
2004.....	1.40	0.34	0.71	2.44	4
2003.....	1.41	0.37	0.71	2.49	3
2002.....	1.46	0.33	0.69	2.48	3
2001.....	1.47	0.33	0.70	2.50	3
2000.....	1.48	0.31	0.71	2.50	3
1999.....	1.47	0.34	0.69	2.51	2
1998.....	1.44	0.33	0.68	2.45	2
1997.....	1.45	0.31	0.68	2.44	2
1996.....	1.52	0.33	0.73	2.58	2
1995.....	1.47	0.29	0.68	2.44	3
1994.....	1.52	0.29	0.70	2.50	2
1993.....	1.58	0.27	0.76	2.62	2
1992.....	1.58	0.31	0.80	2.69	2
1991.....	1.58	0.35	0.78	2.71	2
1990.....	1.59	0.37	0.80	2.77	3
1989.....	1.63	0.35	0.83	2.81	2
1988.....	1.60	0.41	0.86	2.87	2
1987.....	1.64	0.45	0.84	2.93	2
1986.....	1.74	0.45	0.90	3.09	2
1985.....	1.66	0.45	0.99	3.11	2
1984.....	1.55	0.44	1.05	3.04	3
1983.....	1.60	0.43	0.99	3.02	3
1982.....	1.71	0.39	0.98	3.07	3
1981.....	1.76	0.42	1.00	3.18	3
1980.....	1.68	0.36	0.97	3.01	4
1979.....	1.71	0.36	1.07	3.15	3
1978.....	1.66	0.35	1.03	3.04	3
1977.....	1.60	0.32	0.99	2.92	3
Arkansas					
2022.....	0.92	0.23	0.79	1.93	10
2021.....	0.94	0.26	0.76	1.96	10
2020.....	0.91	0.26	0.75	1.93	10
2019.....	0.87	0.24	0.70	1.81	10
2018.....	0.90	0.23	0.64	1.78	10
2017.....	0.92	0.23	0.67	1.82	10
2016.....	0.93	0.22	0.65	1.80	10
2015.....	0.97	0.22	0.65	1.83	10
2014.....	0.96	0.21	0.62	1.79	10
2013.....	1.00	0.20	0.60	1.80	10
2012.....	1.00	0.20	0.60	1.80	10
2011.....	0.97	0.18	0.56	1.72	10
2010.....	1.02	0.19	0.57	1.77	10
2009.....	1.03	0.17	0.57	1.78	10
2008.....	1.05	0.17	0.55	1.77	10
2007.....	1.02	0.15	0.51	1.69	10
2006.....	1.05	0.16	0.54	1.75	10
2005.....	1.03	0.15	0.50	1.67	10
2004.....	1.04	0.15	0.49	1.68	10

Decile values (1 = highest) apply only to State-level data. Numbers may not sum because of rounding.

**Table 4.** Per capita ethanol consumption for States, census regions, and the United States, 1977–2022. (Gallons of ethanol, based on population ages 14 and older.) (Continued)

State or other geographic area	Per capita consumption				U.S. decile for all beverages
	Beer	Wine	Spirits	All beverages	
2003.....	1.06	0.14	0.56	1.77	10
2002.....	1.09	0.14	0.53	1.75	10
2001.....	1.08	0.13	0.53	1.74	10
2000.....	1.09	0.12	0.53	1.74	10
1999.....	1.09	0.12	0.54	1.75	10
1998.....	1.10	0.11	0.51	1.73	10
1997.....	1.07	0.12	0.52	1.71	10
1996.....	1.07	0.12	0.53	1.72	10
1995.....	1.06	0.11	0.51	1.68	10
1994.....	1.06	0.13	0.46	1.65	10
1993.....	1.10	0.11	0.58	1.79	9
1992.....	1.13	0.12	0.65	1.90	9
1991.....	1.12	0.11	0.58	1.81	9
1990.....	1.12	0.13	0.61	1.86	9
1989.....	1.10	0.13	0.58	1.82	9
1988.....	1.09	0.14	0.54	1.78	10
1987.....	1.09	0.11	0.53	1.74	10
1986.....	1.08	0.09	0.49	1.65	10
1985.....	1.04	0.13	0.59	1.77	10
1984.....	1.03	0.12	0.64	1.80	10
1983.....	1.03	0.13	0.63	1.79	10
1982.....	1.03	0.12	0.63	1.78	10
1981.....	1.06	0.12	0.68	1.86	10
1980.....	1.00	0.12	0.68	1.81	10
1979.....	0.90	0.09	0.55	1.54	10
1978.....	0.95	0.11	0.71	1.76	10
1977.....	0.89	0.10	0.61	1.61	10
California					
2022.....	1.10	0.62	1.16	2.88	3
2021.....	1.11	0.63	1.09	2.83	4
2020.....	1.06	0.61	0.95	2.63	4
2019.....	1.05	0.61	0.91	2.57	4
2018.....	1.03	0.61	0.88	2.52	4
2017.....	0.95	0.58	0.79	2.32	6
2016.....	0.96	0.60	0.78	2.34	6
2015.....	1.00	0.53	0.75	2.28	6
2014.....	1.00	0.60	0.73	2.33	6
2013.....	0.98	0.61	0.75	2.34	6
2012.....	0.99	0.63	0.74	2.36	6
2011.....	0.95	0.58	0.72	2.25	7
2010.....	0.97	0.49	0.71	2.16	8
2009.....	1.01	0.57	0.70	2.28	6
2008.....	1.05	0.55	0.70	2.30	6
2007.....	1.06	0.54	0.70	2.30	6
2006.....	1.02	0.56	0.70	2.29	6
2005.....	1.03	0.54	0.69	2.26	6
2004.....	1.07	0.52	0.67	2.25	6
2003.....	1.07	0.51	0.65	2.23	6
2002.....	1.08	0.49	0.64	2.21	6
2001.....	1.09	0.48	0.63	2.20	6
2000.....	1.12	0.48	0.64	2.24	5
1999.....	1.12	0.48	0.62	2.22	6
1998.....	1.11	0.49	0.61	2.21	6
1997.....	1.14	0.52	0.62	2.28	5

Decile values (1 = highest) apply only to State-level data. Numbers may not sum because of rounding.

**Table 4.** Per capita ethanol consumption for States, census regions, and the United States, 1977–2022. (Gallons of ethanol, based on population ages 14 and older.) (Continued)

State or other geographic area	Per capita consumption				U.S. decile for all beverages
	Beer	Wine	Spirits	All beverages	
1996.....	1.13	0.50	0.64	2.27	5
1995.....	1.15	0.46	0.63	2.24	5
1994.....	1.09	0.47	0.68	2.24	5
1993.....	1.17	0.48	0.69	2.35	4
1992.....	1.28	0.51	0.75	2.54	3
1991.....	1.22	0.49	0.75	2.46	4
1990.....	1.32	0.59	0.87	2.78	2
1989.....	1.29	0.60	0.85	2.75	3
1988.....	1.32	0.67	0.88	2.86	3
1987.....	1.35	0.73	0.92	3.00	2
1986.....	1.35	0.78	0.95	3.08	2
1985.....	1.32	0.78	1.02	3.11	2
1984.....	1.37	0.73	1.06	3.16	2
1983.....	1.36	0.74	1.10	3.21	2
1982.....	1.37	0.72	1.13	3.22	3
1981.....	1.43	0.72	1.20	3.35	2
1980.....	1.41	0.71	1.24	3.36	2
1979.....	1.39	0.68	1.25	3.32	2
1978.....	1.33	0.67	1.29	3.28	2
1977.....	1.29	0.65	1.25	3.19	2
Colorado					
2022.....	1.13	0.47	1.48	3.08	2
2021.....	1.17	0.49	1.39	3.05	2
2020.....	1.14	0.51	1.33	2.98	2
2019.....	1.17	0.47	1.14	2.78	3
2018.....	1.14	0.52	1.22	2.88	2
2017.....	1.14	0.51	1.19	2.84	3
2016.....	1.14	0.51	1.16	2.81	3
2015.....	1.12	0.51	1.14	2.77	3
2014.....	1.14	0.51	1.11	2.77	3
2013.....	1.20	0.50	1.11	2.81	2
2012.....	1.15	0.52	1.08	2.76	3
2011.....	1.20	0.49	1.04	2.72	3
2010.....	1.22	0.48	1.01	2.71	2
2009.....	1.23	0.46	1.01	2.70	3
2008.....	1.28	0.47	1.02	2.77	3
2007.....	1.30	0.47	1.01	2.78	2
2006.....	1.29	0.45	0.98	2.72	2
2005.....	1.31	0.42	0.99	2.72	2
2004.....	1.30	0.43	0.95	2.68	2
2003.....	1.33	0.40	0.87	2.60	2
2002.....	1.35	0.39	0.90	2.64	2
2001.....	1.42	0.41	0.96	2.78	1
2000.....	1.35	0.37	0.89	2.60	2
1999.....	1.33	0.37	0.75	2.45	3
1998.....	1.33	0.37	0.83	2.53	2
1997.....	1.30	0.37	0.81	2.48	2
1996.....	1.36	0.37	0.84	2.57	2
1995.....	1.34	0.35	0.78	2.47	2
1994.....	1.36	0.35	0.84	2.55	2
1993.....	1.40	0.36	0.86	2.63	2
1992.....	1.34	0.36	0.81	2.52	3
1991.....	1.39	0.35	0.87	2.61	3
1990.....	1.35	0.29	0.75	2.39	6

Decile values (1 = highest) apply only to State-level data. Numbers may not sum because of rounding.

**Table 4.** Per capita ethanol consumption for States, census regions, and the United States, 1977–2022. (Gallons of ethanol, based on population ages 14 and older.) (Continued)

State or other geographic area	Per capita consumption				U.S. decile for all beverages
	Beer	Wine	Spirits	All beverages	
1989.....	1.42	0.38	0.85	2.64	3
1988.....	1.44	0.40	0.92	2.76	3
1987.....	1.45	0.45	0.94	2.84	3
1986.....	1.49	0.47	0.95	2.90	3
1985.....	1.48	0.50	1.18	3.17	2
1984.....	1.51	0.46	1.12	3.10	2
1983.....	1.57	0.46	1.12	3.15	3
1982.....	1.63	0.46	1.17	3.26	2
1981.....	1.62	0.44	1.26	3.32	2
1980.....	1.56	0.46	1.31	3.33	2
1979.....	1.63	0.46	1.33	3.42	2
1978.....	1.60	0.46	1.39	3.46	2
1977.....	1.40	0.36	1.19	2.95	3
Connecticut					
2022.....	0.72	0.53	1.15	2.40	6
2021.....	0.78	0.56	1.18	2.52	5
2020.....	0.79	0.59	1.10	2.48	5
2019.....	0.81	0.60	1.07	2.47	5
2018.....	0.80	0.60	1.01	2.40	5
2017.....	0.82	0.60	0.98	2.41	5
2016.....	0.85	0.62	0.98	2.44	5
2015.....	0.85	0.61	0.95	2.41	5
2014.....	0.84	0.60	0.92	2.36	6
2013.....	0.85	0.61	0.91	2.37	5
2012.....	0.86	0.61	0.91	2.38	5
2011.....	0.86	0.62	0.88	2.35	5
2010.....	0.88	0.60	0.87	2.35	5
2009.....	0.88	0.59	0.85	2.31	6
2008.....	0.93	0.58	0.85	2.36	6
2007.....	0.92	0.57	0.84	2.33	6
2006.....	0.93	0.56	0.81	2.30	6
2005.....	0.90	0.54	0.79	2.23	6
2004.....	0.93	0.53	0.79	2.25	6
2003.....	0.93	0.52	0.78	2.23	6
2002.....	0.95	0.50	0.75	2.21	6
2001.....	0.95	0.50	0.74	2.19	6
2000.....	0.94	0.49	0.74	2.18	6
1999.....	0.94	0.49	0.75	2.18	6
1998.....	0.96	0.49	0.76	2.21	5
1997.....	0.95	0.48	0.74	2.17	6
1996.....	0.91	0.46	0.72	2.09	7
1995.....	0.96	0.46	0.78	2.20	5
1994.....	0.99	0.43	0.78	2.20	6
1993.....	0.96	0.44	0.80	2.20	6
1992.....	1.01	0.45	0.83	2.30	6
1991.....	1.03	0.43	0.84	2.29	6
1990.....	1.09	0.45	0.92	2.46	6
1989.....	1.07	0.46	0.96	2.50	4
1988.....	1.12	0.50	1.05	2.67	4
1987.....	1.14	0.51	1.10	2.75	3
1986.....	1.11	0.51	1.14	2.76	4
1985.....	1.12	0.50	1.19	2.81	4
1984.....	1.10	0.49	1.19	2.78	5
1983.....	1.10	0.49	1.22	2.80	5

Decile values (1 = highest) apply only to State-level data. Numbers may not sum because of rounding.



**Table 4.** Per capita ethanol consumption for States, census regions, and the United States, 1977–2022. (Gallons of ethanol, based on population ages 14 and older.) (Continued)

State or other geographic area	Per capita consumption				U.S. decile for all beverages
	Beer	Wine	Spirits	All beverages	
1982.....	1.04	0.49	1.21	2.74	6
1981.....	1.05	0.44	1.18	2.67	6
1980.....	1.06	0.43	1.20	2.69	6
1979.....	1.14	0.40	1.21	2.76	5
1978.....	1.09	0.38	1.21	2.69	6
1977.....	1.06	0.35	1.23	2.64	6
Delaware					
2022.....	1.05	0.68	2.34	4.07	1
2021.....	1.13	0.80	2.46	4.38	1
2020.....	1.11	0.76	2.11	3.99	1
2019.....	1.11	0.71	1.61	3.43	1
2018.....	1.11	0.72	1.70	3.53	1
2017.....	1.15	0.72	1.75	3.62	1
2016.....	1.20	0.73	1.80	3.73	1
2015.....	1.18	0.72	1.75	3.66	1
2014.....	1.21	0.72	1.67	3.60	1
2013.....	1.25	0.72	1.63	3.60	1
2012.....	1.32	0.70	1.58	3.59	1
2011.....	1.34	0.69	1.52	3.55	1
2010.....	1.36	0.66	1.36	3.38	1
2009.....	1.32	0.65	1.34	3.31	1
2008.....	1.35	0.57	1.23	3.15	1
2007.....	1.38	0.59	1.23	3.19	1
2006.....	1.41	0.59	1.26	3.26	1
2005.....	1.42	0.58	1.24	3.25	1
2004.....	1.42	0.57	1.28	3.27	1
2003.....	1.38	0.57	1.18	3.12	1
2002.....	1.39	0.52	1.10	3.01	1
2001.....	1.39	0.49	1.07	2.94	1
2000.....	1.36	0.48	1.05	2.89	1
1999.....	1.40	0.48	1.03	2.90	1
1998.....	1.41	0.47	1.03	2.91	1
1997.....	1.37	0.46	0.99	2.81	1
1996.....	1.39	0.45	0.94	2.78	1
1995.....	1.30	0.40	0.92	2.62	2
1994.....	1.43	0.38	0.95	2.76	1
1993.....	1.46	0.35	0.95	2.76	1
1992.....	1.40	0.36	0.97	2.73	2
1991.....	1.40	0.35	0.95	2.70	2
1990.....	1.44	0.37	1.14	2.95	2
1989.....	1.43	0.39	1.15	2.96	2
1988.....	1.46	0.41	1.21	3.08	1
1987.....	1.46	0.43	1.23	3.12	2
1986.....	1.46	0.45	1.25	3.16	2
1985.....	1.48	0.41	1.31	3.20	2
1984.....	1.52	0.39	1.29	3.20	2
1983.....	1.55	0.35	1.35	3.25	2
1982.....	1.54	0.34	1.38	3.26	2
1981.....	1.52	0.33	1.40	3.24	3
1980.....	1.44	0.29	1.37	3.11	3
1979.....	1.35	0.26	1.31	2.92	4
1978.....	1.31	0.24	1.30	2.85	4
1977.....	1.30	0.23	1.33	2.86	4

Decile values (1 = highest) apply only to State-level data. Numbers may not sum because of rounding.

**Table 4.** Per capita ethanol consumption for States, census regions, and the United States, 1977–2022. (Gallons of ethanol, based on population ages 14 and older.) (Continued)

State or other geographic area	Per capita consumption				U.S. decile for all beverages
	Beer	Wine	Spirits	All beverages	
District of Columbia					
2022.....	1.13	1.05	1.92	4.10	1
2021.....	1.16	1.08	1.86	4.11	1
2020.....	1.14	1.08	1.79	4.01	1
2019.....	1.07	1.01	1.67	3.75	1
2018.....	1.07	1.01	1.68	3.76	1
2017.....	1.10	1.02	1.68	3.80	1
2016.....	1.12	1.02	1.69	3.83	1
2015.....	1.13	1.01	1.67	3.81	1
2014.....	1.15	1.00	1.66	3.81	1
2013.....	1.16	1.01	1.66	3.83	1
2012.....	1.18	1.01	1.65	3.84	1
2011.....	1.19	1.01	1.62	3.83	1
2010.....	1.22	1.00	1.61	3.83	1
2009.....	1.26	1.00	1.62	3.88	1
2008.....	1.35	1.01	1.64	4.00	1
2007.....	1.37	1.00	1.63	4.00	1
2006.....	1.38	0.96	1.60	3.94	1
2005.....	1.40	0.93	1.56	3.90	1
2004.....	1.38	0.91	1.52	3.80	1
2003.....	1.38	0.88	1.51	3.76	1
2002.....	1.36	0.83	1.47	3.66	1
2001.....	1.36	0.79	1.46	3.61	1
2000.....	1.39	0.81	1.45	3.65	1
1999.....	1.38	0.78	1.36	3.52	1
1998.....	1.37	0.78	1.57	3.73	1
1997.....	1.42	0.80	1.61	3.83	1
1996.....	1.33	0.86	1.47	3.67	1
1995.....	1.49	0.77	1.52	3.78	1
1994.....	1.50	0.74	1.52	3.76	1
1993.....	1.51	0.73	1.54	3.78	1
1992.....	1.61	0.70	1.74	4.05	1
1991.....	1.42	0.61	1.85	3.89	1
1990.....	1.42	0.76	1.96	4.14	1
1989.....	1.39	0.82	1.72	3.92	1
1988.....	1.38	0.93	1.90	4.22	1
1987.....	1.41	0.95	2.26	4.62	1
1986.....	1.45	1.00	2.09	4.54	1
1985.....	1.44	1.00	2.35	4.80	1
1984.....	1.51	1.07	2.59	5.17	1
1983.....	1.51	1.05	2.71	5.27	1
1982.....	1.46	0.99	2.88	5.33	1
1981.....	1.48	1.05	2.89	5.42	1
1980.....	1.49	0.99	2.94	5.41	1
1979.....	1.42	0.96	2.92	5.30	1
1978.....	1.38	0.91	3.04	5.33	1
1977.....	1.35	0.86	3.16	5.37	1
Florida					
2022.....	1.04	0.57	1.36	2.97	2
2021.....	1.07	0.58	1.32	2.97	3
2020.....	1.04	0.57	1.14	2.75	3
2019.....	1.05	0.56	1.09	2.70	3
2018.....	1.05	0.56	1.05	2.66	3

Decile values (1 = highest) apply only to State-level data. Numbers may not sum because of rounding.

**Table 4.** Per capita ethanol consumption for States, census regions, and the United States, 1977–2022. (Gallons of ethanol, based on population ages 14 and older.) (Continued)

State or other geographic area	Per capita consumption				U.S. decile for all beverages
	Beer	Wine	Spirits	All beverages	
2017.....	1.07	0.56	1.04	2.67	4
2016.....	1.09	0.56	1.03	2.69	3
2015.....	1.11	0.54	0.98	2.64	4
2014.....	1.10	0.54	0.98	2.62	4
2013.....	1.28	0.51	0.96	2.75	3
2012.....	1.26	0.53	0.96	2.75	3
2011.....	1.13	0.51	0.93	2.57	4
2010.....	1.12	0.49	0.91	2.53	4
2009.....	1.19	0.48	0.91	2.58	4
2008.....	1.24	0.48	0.89	2.61	3
2007.....	1.28	0.48	0.92	2.68	3
2006.....	1.32	0.47	0.91	2.70	3
2005.....	1.33	0.46	0.91	2.70	2
2004.....	1.34	0.46	0.88	2.68	2
2003.....	1.31	0.44	0.86	2.61	2
2002.....	1.32	0.43	0.84	2.58	2
2001.....	1.32	0.40	0.82	2.54	2
2000.....	1.32	0.41	0.83	2.56	2
1999.....	1.33	0.40	0.80	2.53	2
1998.....	1.33	0.38	0.79	2.50	2
1997.....	1.36	0.37	0.80	2.53	2
1996.....	1.36	0.37	0.81	2.54	2
1995.....	1.34	0.35	0.82	2.50	2
1994.....	1.40	0.33	0.87	2.60	2
1993.....	1.44	0.33	0.92	2.68	2
1992.....	1.45	0.34	0.96	2.75	1
1991.....	1.43	0.34	0.92	2.69	2
1990.....	1.54	0.39	1.04	2.96	2
1989.....	1.51	0.39	1.00	2.89	2
1988.....	1.50	0.41	1.00	2.91	2
1987.....	1.50	0.42	1.03	2.95	2
1986.....	1.50	0.41	1.05	2.96	2
1985.....	1.47	0.41	1.16	3.04	3
1984.....	1.46	0.40	1.23	3.09	2
1983.....	1.55	0.39	1.22	3.16	2
1982.....	1.54	0.40	1.32	3.26	2
1981.....	1.54	0.39	1.37	3.30	3
1980.....	1.40	0.37	1.41	3.18	3
1979.....	1.38	0.34	1.41	3.14	3
1978.....	1.34	0.32	1.40	3.07	3
1977.....	1.27	0.31	1.40	2.99	3
Georgia					
2022.....	0.89	0.25	0.83	1.96	9
2021.....	0.93	0.26	0.81	1.99	10
2020.....	0.93	0.25	0.74	1.91	10
2019.....	0.94	0.25	0.72	1.90	10
2018.....	0.95	0.25	0.71	1.91	10
2017.....	0.98	0.25	0.71	1.93	10
2016.....	1.01	0.25	0.70	1.96	9
2015.....	1.01	0.25	0.69	1.95	9
2014.....	1.02	0.25	0.69	1.97	9
2013.....	1.03	0.25	0.69	1.98	9
2012.....	1.06	0.25	0.68	1.99	9
2011.....	1.06	0.25	0.67	1.98	9

Decile values (1 = highest) apply only to State-level data. Numbers may not sum because of rounding.

**Table 4.** Per capita ethanol consumption for States, census regions, and the United States, 1977–2022. (Gallons of ethanol, based on population ages 14 and older.) (Continued)

State or other geographic area	Per capita consumption				U.S. decile for all beverages
	Beer	Wine	Spirits	All beverages	
2010.....	1.08	0.25	0.65	1.98	9
2009.....	1.11	0.25	0.65	2.01	9
2008.....	1.16	0.25	0.65	2.06	8
2007.....	1.19	0.26	0.65	2.10	8
2006.....	1.19	0.26	0.65	2.10	8
2005.....	1.17	0.26	0.64	2.07	8
2004.....	1.19	0.27	0.65	2.11	7
2003.....	1.20	0.26	0.66	2.13	7
2002.....	1.21	0.26	0.66	2.13	7
2001.....	1.20	0.25	0.65	2.11	7
2000.....	1.21	0.25	0.69	2.16	7
1999.....	1.23	0.25	0.70	2.18	6
1998.....	1.22	0.23	0.70	2.15	6
1997.....	1.20	0.23	0.70	2.13	6
1996.....	1.24	0.24	0.71	2.18	6
1995.....	1.21	0.21	0.70	2.12	6
1994.....	1.17	0.21	0.77	2.14	7
1993.....	1.23	0.20	0.77	2.20	6
1992.....	1.22	0.21	0.79	2.23	7
1991.....	1.16	0.22	0.78	2.17	7
1990.....	1.22	0.23	0.86	2.31	7
1989.....	1.18	0.24	0.94	2.36	6
1988.....	1.21	0.26	0.92	2.39	7
1987.....	1.21	0.27	1.00	2.48	6
1986.....	1.21	0.27	0.94	2.43	7
1985.....	1.17	0.25	1.01	2.44	7
1984.....	1.18	0.24	1.06	2.48	7
1983.....	1.14	0.22	1.06	2.42	7
1982.....	1.12	0.21	1.04	2.36	8
1981.....	1.10	0.18	1.09	2.38	8
1980.....	1.06	0.19	1.08	2.33	8
1979.....	1.11	0.18	1.16	2.44	7
1978.....	1.09	0.18	1.21	2.48	7
1977.....	1.03	0.15	1.19	2.37	7
Hawaii					
2022.....	1.23	0.58	0.88	2.70	5
2021.....	1.27	0.59	0.84	2.70	5
2020.....	1.24	0.58	0.79	2.62	4
2019.....	1.29	0.59	0.80	2.68	4
2018.....	1.28	0.59	0.79	2.66	4
2017.....	1.29	0.58	0.79	2.65	4
2016.....	1.29	0.57	0.78	2.64	4
2015.....	1.28	0.56	0.77	2.61	4
2014.....	1.27	0.54	0.77	2.59	4
2013.....	1.25	0.54	0.76	2.56	4
2012.....	1.25	0.53	0.75	2.53	4
2011.....	1.25	0.53	0.73	2.51	4
2010.....	1.25	0.52	0.71	2.48	4
2009.....	1.27	0.51	0.71	2.49	4
2008.....	1.33	0.51	0.72	2.56	4
2007.....	1.30	0.48	0.77	2.55	4
2006.....	1.28	0.47	0.77	2.52	4
2005.....	1.30	0.45	0.72	2.47	4
2004.....	1.38	0.43	0.70	2.50	3

Decile values (1 = highest) apply only to State-level data. Numbers may not sum because of rounding.

**Table 4.** Per capita ethanol consumption for States, census regions, and the United States, 1977–2022. (Gallons of ethanol, based on population ages 14 and older.) (Continued)

State or other geographic area	Per capita consumption				U.S. decile for all beverages
	Beer	Wine	Spirits	All beverages	
2003.....	1.30	0.42	0.66	2.38	5
2002.....	1.27	0.39	0.62	2.28	5
2001.....	1.30	0.38	0.60	2.28	5
2000.....	1.33	0.39	0.60	2.32	4
1999.....	1.31	0.39	0.56	2.26	5
1998.....	1.32	0.37	0.54	2.22	5
1997.....	1.38	0.40	0.56	2.33	4
1996.....	1.40	0.36	0.58	2.34	3
1995.....	1.41	0.34	0.57	2.32	4
1994.....	1.46	0.38	0.62	2.46	3
1993.....	1.49	0.37	0.65	2.51	3
1992.....	1.55	0.39	0.69	2.63	2
1991.....	1.57	0.40	0.70	2.67	2
1990.....	1.64	0.40	0.79	2.84	2
1989.....	1.56	0.43	0.80	2.79	2
1988.....	1.64	0.45	0.80	2.89	2
1987.....	1.59	0.41	0.77	2.76	3
1986.....	1.61	0.44	0.86	2.91	3
1985.....	1.61	0.42	0.88	2.91	3
1984.....	1.66	0.41	0.92	2.99	3
1983.....	1.89	0.44	1.13	3.45	1
1982.....	1.80	0.48	1.14	3.41	1
1981.....	1.74	0.44	1.16	3.34	2
1980.....	1.64	0.46	1.20	3.30	2
1979.....	1.51	0.42	1.21	3.14	3
1978.....	1.33	0.44	1.25	3.02	3
1977.....	1.55	0.35	1.21	3.11	2
Idaho					
2022.....	0.74	0.29	0.88	1.91	10
2021.....	0.79	0.30	0.91	2.01	9
2020.....	0.82	0.31	0.93	2.06	9
2019.....	0.87	0.32	0.85	2.04	9
2018.....	0.90	0.33	0.83	2.07	9
2017.....	0.94	0.34	0.82	2.10	9
2016.....	0.99	0.35	0.81	2.15	8
2015.....	1.04	0.35	0.79	2.17	7
2014.....	1.05	0.34	0.77	2.16	8
2013.....	1.08	0.34	0.77	2.20	8
2012.....	1.09	0.34	0.77	2.20	8
2011.....	1.10	0.34	0.73	2.18	8
2010.....	1.12	0.34	0.72	2.17	7
2009.....	1.16	0.33	0.70	2.19	7
2008.....	1.17	0.34	0.69	2.19	7
2007.....	1.15	0.34	0.67	2.16	8
2006.....	1.14	0.34	0.65	2.13	7
2005.....	1.13	0.34	0.61	2.07	8
2004.....	1.17	0.34	0.57	2.08	8
2003.....	1.18	0.34	0.55	2.07	7
2002.....	1.17	0.34	0.53	2.05	8
2001.....	1.17	0.33	0.53	2.03	7
2000.....	1.15	0.35	0.52	2.02	7
1999.....	1.17	0.34	0.52	2.03	7
1998.....	1.15	0.33	0.51	1.99	7
1997.....	1.11	0.32	0.52	1.95	8

Decile values (1 = highest) apply only to State-level data. Numbers may not sum because of rounding.

**Table 4.** Per capita ethanol consumption for States, census regions, and the United States, 1977–2022. (Gallons of ethanol, based on population ages 14 and older.) (Continued)

State or other geographic area	Per capita consumption				U.S. decile for all beverages
	Beer	Wine	Spirits	All beverages	
1996.....	1.13	0.30	0.52	1.96	8
1995.....	1.18	0.30	0.54	2.01	7
1994.....	1.24	0.35	0.53	2.12	7
1993.....	1.26	0.29	0.55	2.11	7
1992.....	1.32	0.31	0.57	2.20	7
1991.....	1.31	0.32	0.56	2.19	7
1990.....	1.36	0.33	0.58	2.27	7
1989.....	1.27	0.31	0.57	2.16	8
1988.....	1.28	0.37	0.59	2.24	7
1987.....	1.33	0.39	0.59	2.31	7
1986.....	1.36	0.39	0.62	2.37	7
1985.....	1.36	0.36	0.71	2.43	7
1984.....	1.41	0.31	0.72	2.45	7
1983.....	1.45	0.30	0.77	2.52	7
1982.....	1.45	0.30	0.81	2.57	7
1981.....	1.54	0.33	0.83	2.69	6
1980.....	1.53	0.30	0.77	2.59	7
1979.....	1.51	0.27	0.82	2.60	6
1978.....	1.46	0.25	0.78	2.50	7
1977.....	1.47	0.22	0.78	2.47	7
Illinois					
2022.....	1.00	0.48	0.93	2.42	5
2021.....	1.04	0.48	0.94	2.47	6
2020.....	1.03	0.47	0.88	2.38	6
2019.....	1.07	0.46	0.88	2.41	5
2018.....	1.08	0.45	0.85	2.39	5
2017.....	1.10	0.45	0.83	2.38	5
2016.....	1.12	0.43	0.77	2.32	6
2015.....	1.13	0.43	0.80	2.36	5
2014.....	1.12	0.42	0.78	2.32	6
2013.....	1.13	0.42	0.77	2.33	6
2012.....	1.15	0.43	0.77	2.35	6
2011.....	1.19	0.41	0.75	2.35	6
2010.....	1.22	0.40	0.74	2.35	5
2009.....	1.24	0.39	0.73	2.36	5
2008.....	1.23	0.38	0.74	2.34	6
2007.....	1.24	0.41	0.74	2.38	5
2006.....	1.24	0.37	0.74	2.35	5
2005.....	1.23	0.34	0.71	2.29	6
2004.....	1.24	0.32	0.67	2.22	6
2003.....	1.26	0.35	0.74	2.36	5
2002.....	1.28	0.33	0.65	2.26	5
2001.....	1.27	0.32	0.68	2.28	5
2000.....	1.28	0.32	0.63	2.24	6
1999.....	1.29	0.33	0.66	2.27	5
1998.....	1.27	0.34	0.64	2.25	4
1997.....	1.26	0.35	0.65	2.26	5
1996.....	1.27	0.35	0.68	2.30	4
1995.....	1.30	0.33	0.66	2.29	4
1994.....	1.32	0.34	0.69	2.35	4
1993.....	1.32	0.34	0.72	2.38	4
1992.....	1.34	0.35	0.74	2.43	4
1991.....	1.38	0.34	0.76	2.48	4
1990.....	1.43	0.36	0.82	2.62	4

Decile values (1 = highest) apply only to State-level data. Numbers may not sum because of rounding.

**Table 4.** Per capita ethanol consumption for States, census regions, and the United States, 1977–2022. (Gallons of ethanol, based on population ages 14 and older.) (Continued)

State or other geographic area	Per capita consumption				U.S. decile for all beverages
	Beer	Wine	Spirits	All beverages	
1989.....	1.42	0.36	0.85	2.63	3
1988.....	1.45	0.38	0.87	2.70	3
1987.....	1.43	0.39	0.88	2.71	4
1986.....	1.42	0.39	0.91	2.72	5
1985.....	1.39	0.38	0.99	2.76	5
1984.....	1.41	0.37	1.02	2.80	4
1983.....	1.43	0.35	1.03	2.82	4
1982.....	1.42	0.35	1.07	2.84	5
1981.....	1.44	0.35	1.12	2.91	5
1980.....	1.42	0.33	1.23	2.99	4
1979.....	1.42	0.32	1.15	2.89	4
1978.....	1.35	0.31	1.17	2.83	4
1977.....	1.32	0.30	1.20	2.82	4
Indiana					
2022.....	0.95	0.36	1.00	2.31	7
2021.....	0.95	0.32	1.04	2.31	7
2020.....	0.94	0.33	1.06	2.33	6
2019.....	0.96	0.30	0.94	2.20	7
2018.....	0.96	0.29	0.89	2.15	8
2017.....	0.97	0.29	0.85	2.11	8
2016.....	0.98	0.29	0.89	2.17	8
2015.....	0.98	0.28	0.88	2.14	8
2014.....	0.98	0.27	0.80	2.05	8
2013.....	1.00	0.28	0.81	2.09	8
2012.....	1.02	0.28	0.79	2.08	8
2011.....	1.02	0.27	0.73	2.02	8
2010.....	1.03	0.26	0.74	2.03	8
2009.....	1.08	0.25	0.72	2.05	8
2008.....	1.10	0.24	0.73	2.08	8
2007.....	1.13	0.24	0.72	2.09	8
2006.....	1.09	0.25	0.66	2.00	9
2005.....	1.11	0.22	0.68	2.01	8
2004.....	1.14	0.22	0.65	2.01	8
2003.....	1.11	0.21	0.64	1.96	9
2002.....	1.13	0.20	0.60	1.93	9
2001.....	1.15	0.19	0.62	1.96	8
2000.....	1.16	0.20	0.61	1.98	8
1999.....	1.16	0.19	0.59	1.94	8
1998.....	1.14	0.19	0.58	1.91	8
1997.....	1.09	0.18	0.59	1.85	8
1996.....	1.09	0.20	0.57	1.86	9
1995.....	1.14	0.20	0.58	1.92	8
1994.....	1.15	0.20	0.59	1.94	8
1993.....	1.15	0.19	0.64	1.98	8
1992.....	1.16	0.20	0.58	1.95	9
1991.....	1.22	0.19	0.60	2.00	9
1990.....	1.26	0.20	0.63	2.09	8
1989.....	1.23	0.20	0.64	2.07	8
1988.....	1.25	0.21	0.67	2.13	8
1987.....	1.26	0.23	0.67	2.16	8
1986.....	1.26	0.23	0.67	2.17	8
1985.....	1.26	0.22	0.73	2.20	8
1984.....	1.27	0.21	0.73	2.21	8
1983.....	1.28	0.19	0.73	2.20	8

Decile values (1 = highest) apply only to State-level data. Numbers may not sum because of rounding.

**Table 4.** Per capita ethanol consumption for States, census regions, and the United States, 1977–2022. (Gallons of ethanol, based on population ages 14 and older.) (Continued)

State or other geographic area	Per capita consumption				U.S. decile for all beverages
	Beer	Wine	Spirits	All beverages	
1982.....	1.29	0.19	0.76	2.24	8
1981.....	1.29	0.18	0.78	2.24	8
1980.....	1.26	0.17	0.77	2.21	8
1979.....	1.21	0.15	0.78	2.15	8
1978.....	1.18	0.15	0.78	2.12	8
1977.....	1.13	0.14	0.77	2.03	8
Iowa					
2022.....	1.18	0.22	0.99	2.39	6
2021.....	1.24	0.23	1.02	2.48	5
2020.....	1.25	0.23	1.00	2.48	5
2019.....	1.24	0.23	0.92	2.38	6
2018.....	1.25	0.23	0.90	2.37	5
2017.....	1.26	0.23	0.87	2.36	5
2016.....	1.30	0.23	0.87	2.40	5
2015.....	1.31	0.22	0.83	2.36	5
2014.....	1.34	0.21	0.81	2.37	5
2013.....	1.33	0.22	0.79	2.34	6
2012.....	1.36	0.23	0.81	2.40	5
2011.....	1.38	0.21	0.77	2.36	5
2010.....	1.39	0.18	0.73	2.30	6
2009.....	1.42	0.18	0.72	2.31	6
2008.....	1.43	0.17	0.70	2.30	6
2007.....	1.41	0.17	0.67	2.25	7
2006.....	1.39	0.16	0.65	2.20	7
2005.....	1.40	0.16	0.61	2.16	7
2004.....	1.39	0.16	0.57	2.12	7
2003.....	1.38	0.15	0.54	2.07	8
2002.....	1.38	0.14	0.51	2.04	8
2001.....	1.36	0.13	0.50	1.99	8
2000.....	1.35	0.13	0.50	1.98	8
1999.....	1.34	0.13	0.48	1.95	8
1998.....	1.31	0.12	0.46	1.90	8
1997.....	1.28	0.12	0.45	1.85	9
1996.....	1.28	0.12	0.45	1.85	9
1995.....	1.26	0.11	0.44	1.80	9
1994.....	1.30	0.10	0.44	1.84	9
1993.....	1.28	0.11	0.48	1.87	9
1992.....	1.31	0.13	0.46	1.90	9
1991.....	1.32	0.16	0.52	2.01	8
1990.....	1.34	0.18	0.54	2.06	9
1989.....	1.30	0.19	0.52	2.01	9
1988.....	1.32	0.20	0.53	2.06	9
1987.....	1.34	0.22	0.59	2.14	8
1986.....	1.35	0.20	0.54	2.09	9
1985.....	1.33	0.14	0.58	2.06	9
1984.....	1.39	0.12	0.62	2.13	9
1983.....	1.40	0.13	0.65	2.18	8
1982.....	1.40	0.13	0.65	2.19	8
1981.....	1.44	0.13	0.69	2.26	8
1980.....	1.41	0.13	0.71	2.25	8
1979.....	1.40	0.11	0.71	2.22	8
1978.....	1.38	0.11	0.74	2.23	8
1977.....	1.33	0.10	0.74	2.17	8

Decile values (1 = highest) apply only to State-level data. Numbers may not sum because of rounding.



**Table 4.** Per capita ethanol consumption for States, census regions, and the United States, 1977–2022. (Gallons of ethanol, based on population ages 14 and older.) (Continued)

State or other geographic area	Per capita consumption				U.S. decile for all beverages
	Beer	Wine	Spirits	All beverages	
<b>Kansas</b>					
2022.....	1.06	0.15	0.99	2.20	8
2021.....	1.11	0.15	0.93	2.18	9
2020.....	1.07	0.14	0.89	2.10	9
2019.....	1.02	0.14	0.82	1.98	9
2018.....	0.98	0.14	0.79	1.92	9
2017.....	1.03	0.14	0.80	1.97	9
2016.....	1.02	0.14	0.75	1.92	10
2015.....	1.03	0.14	0.74	1.91	10
2014.....	1.03	0.14	0.75	1.92	9
2013.....	0.99	0.14	0.76	1.88	10
2012.....	1.09	0.14	0.72	1.95	9
2011.....	1.07	0.14	0.69	1.90	10
2010.....	1.13	0.14	0.68	1.95	9
2009.....	1.18	0.14	0.67	1.99	9
2008.....	1.22	0.14	0.65	2.01	9
2007.....	1.17	0.15	0.64	1.96	9
2006.....	1.14	0.18	0.61	1.94	9
2005.....	1.14	0.18	0.57	1.89	9
2004.....	1.14	0.16	0.56	1.86	9
2003.....	1.16	0.17	0.56	1.89	10
2002.....	1.19	0.15	0.54	1.88	9
2001.....	1.12	0.15	0.53	1.80	9
2000.....	1.13	0.15	0.53	1.82	9
1999.....	1.12	0.15	0.54	1.81	9
1998.....	1.08	0.13	0.54	1.76	9
1997.....	1.08	0.12	0.48	1.67	10
1996.....	1.04	0.12	0.49	1.65	10
1995.....	1.04	0.12	0.50	1.66	10
1994.....	1.12	0.13	0.48	1.73	10
1993.....	1.09	0.14	0.52	1.75	10
1992.....	1.09	0.14	0.55	1.78	10
1991.....	1.15	0.14	0.57	1.85	9
1990.....	1.13	0.13	0.53	1.79	10
1989.....	1.13	0.13	0.55	1.81	10
1988.....	1.13	0.22	0.57	1.92	9
1987.....	1.14	0.17	0.57	1.88	9
1986.....	1.14	0.17	0.60	1.91	9
1985.....	1.18	0.15	0.64	1.97	9
1984.....	1.19	0.14	0.63	1.96	9
1983.....	1.20	0.13	0.64	1.97	9
1982.....	1.22	0.13	0.67	2.03	9
1981.....	1.23	0.12	0.70	2.05	9
1980.....	1.22	0.11	0.61	1.95	9
1979.....	1.19	0.12	0.74	2.04	9
1978.....	1.15	0.12	0.65	1.91	10
1977.....	1.14	0.10	0.65	1.90	10
<b>Kentucky</b>					
2022.....	0.92	0.22	1.06	2.21	8
2021.....	0.96	0.23	1.04	2.24	8
2020.....	0.90	0.24	0.97	2.11	8
2019.....	0.88	0.23	0.91	2.02	9
2018.....	0.93	0.22	0.81	1.96	9

Decile values (1 = highest) apply only to State-level data. Numbers may not sum because of rounding.

**Table 4.** Per capita ethanol consumption for States, census regions, and the United States, 1977–2022. (Gallons of ethanol, based on population ages 14 and older.) (Continued)

State or other geographic area	Per capita consumption				U.S. decile for all beverages
	Beer	Wine	Spirits	All beverages	
2017.....	0.94	0.21	0.82	1.97	9
2016.....	0.96	0.22	0.79	1.98	9
2015.....	0.99	0.22	0.76	1.97	9
2014.....	0.94	0.21	0.72	1.87	10
2013.....	0.95	0.20	0.70	1.85	10
2012.....	0.97	0.20	0.70	1.87	10
2011.....	0.94	0.19	0.66	1.79	10
2010.....	1.00	0.18	0.66	1.83	10
2009.....	1.02	0.18	0.65	1.85	10
2008.....	1.03	0.17	0.65	1.85	10
2007.....	1.04	0.17	0.63	1.85	10
2006.....	1.04	0.17	0.62	1.82	10
2005.....	1.04	0.14	0.61	1.80	10
2004.....	1.07	0.17	0.57	1.81	10
2003.....	1.03	0.15	0.57	1.75	10
2002.....	1.08	0.14	0.54	1.77	10
2001.....	1.04	0.12	0.46	1.63	10
2000.....	1.07	0.14	0.53	1.74	10
1999.....	1.07	0.13	0.54	1.74	10
1998.....	1.08	0.13	0.53	1.74	10
1997.....	1.07	0.13	0.53	1.72	9
1996.....	1.09	0.13	0.54	1.76	9
1995.....	1.06	0.11	0.54	1.71	9
1994.....	1.08	0.11	0.55	1.73	10
1993.....	1.08	0.10	0.55	1.73	10
1992.....	1.04	0.11	0.56	1.71	10
1991.....	1.11	0.11	0.56	1.78	10
1990.....	1.12	0.11	0.60	1.83	10
1989.....	1.09	0.12	0.57	1.79	10
1988.....	1.10	0.12	0.60	1.82	10
1987.....	1.04	0.14	0.60	1.78	10
1986.....	1.10	0.14	0.63	1.86	10
1985.....	1.08	0.14	0.66	1.88	10
1984.....	1.06	0.13	0.68	1.87	10
1983.....	1.13	0.12	0.70	1.95	9
1982.....	1.14	0.12	0.72	1.99	9
1981.....	1.13	0.10	0.75	1.99	9
1980.....	1.08	0.10	0.73	1.91	10
1979.....	1.07	0.09	0.75	1.91	9
1978.....	1.04	0.09	0.75	1.88	10
1977.....	1.16	0.09	0.73	1.98	9
Louisiana					
2022.....	1.24	0.33	1.20	2.77	4
2021.....	1.26	0.34	1.15	2.75	4
2020.....	1.24	0.34	1.00	2.58	5
2019.....	1.22	0.33	1.01	2.56	4
2018.....	1.23	0.34	0.99	2.55	4
2017.....	1.24	0.34	1.00	2.57	4
2016.....	1.25	0.34	1.00	2.59	4
2015.....	1.27	0.33	0.98	2.59	4
2014.....	1.30	0.33	0.95	2.59	4
2013.....	1.34	0.32	0.93	2.58	4
2012.....	1.38	0.32	0.90	2.59	4
2011.....	1.39	0.30	0.88	2.57	3

Decile values (1 = highest) apply only to State-level data. Numbers may not sum because of rounding.

**Table 4.** Per capita ethanol consumption for States, census regions, and the United States, 1977–2022. (Gallons of ethanol, based on population ages 14 and older.) (Continued)

State or other geographic area	Per capita consumption				U.S. decile for all beverages
	Beer	Wine	Spirits	All beverages	
2010.....	1.42	0.28	0.84	2.55	3
2009.....	1.50	0.28	0.85	2.63	3
2008.....	1.55	0.26	0.83	2.64	3
2007.....	1.57	0.27	0.81	2.66	3
2006.....	1.59	0.25	0.78	2.63	3
2005.....	1.47	0.24	0.71	2.41	4
2004.....	1.38	0.26	0.73	2.36	5
2003.....	1.41	0.25	0.72	2.38	4
2002.....	1.32	0.24	0.70	2.26	5
2001.....	1.49	0.23	0.69	2.41	3
2000.....	1.51	0.22	0.70	2.44	3
1999.....	1.52	0.24	0.69	2.45	3
1998.....	1.48	0.23	0.70	2.40	3
1997.....	1.51	0.23	0.71	2.44	2
1996.....	1.52	0.22	0.72	2.46	2
1995.....	1.51	0.21	0.73	2.46	2
1994.....	1.45	0.21	0.73	2.39	3
1993.....	1.53	0.21	0.72	2.47	3
1992.....	1.55	0.22	0.74	2.51	3
1991.....	1.52	0.21	0.73	2.46	4
1990.....	1.53	0.23	0.78	2.54	5
1989.....	1.47	0.24	0.74	2.45	6
1988.....	1.49	0.24	0.71	2.44	6
1987.....	1.40	0.25	0.77	2.41	7
1986.....	1.42	0.26	0.79	2.47	6
1985.....	1.37	0.28	0.87	2.52	6
1984.....	1.42	0.29	0.95	2.66	6
1983.....	1.44	0.31	1.03	2.77	5
1982.....	1.49	0.30	1.00	2.78	5
1981.....	1.49	0.28	1.02	2.79	6
1980.....	1.40	0.27	1.03	2.70	6
1979.....	1.32	0.25	1.04	2.61	6
1978.....	1.32	0.25	1.04	2.60	6
1977.....	1.27	0.25	1.00	2.51	6
Maine					
2022.....	1.28	0.42	1.18	2.88	3
2021.....	1.34	0.44	1.20	2.98	3
2020.....	1.34	0.44	1.17	2.95	3
2019.....	1.35	0.44	1.11	2.90	2
2018.....	1.33	0.44	1.07	2.85	3
2017.....	1.35	0.44	1.05	2.85	2
2016.....	1.36	0.44	1.01	2.81	3
2015.....	1.37	0.44	0.97	2.78	3
2014.....	1.36	0.42	0.93	2.70	3
2013.....	1.36	0.42	0.91	2.69	3
2012.....	1.34	0.42	0.89	2.65	4
2011.....	1.31	0.42	0.87	2.60	3
2010.....	1.30	0.42	0.84	2.56	3
2009.....	1.31	0.42	0.82	2.55	4
2008.....	1.33	0.42	0.81	2.56	4
2007.....	1.35	0.42	0.80	2.57	4
2006.....	1.34	0.42	0.78	2.54	4
2005.....	1.34	0.41	0.77	2.52	3

Decile values (1 = highest) apply only to State-level data. Numbers may not sum because of rounding.

**Table 4.** Per capita ethanol consumption for States, census regions, and the United States, 1977–2022. (Gallons of ethanol, based on population ages 14 and older.) (Continued)

State or other geographic area	Per capita consumption				U.S. decile for all beverages
	Beer	Wine	Spirits	All beverages	
2004.....	1.26	0.41	0.76	2.44	4
2003.....	1.25	0.40	0.74	2.39	4
2002.....	1.23	0.40	0.70	2.33	4
2001.....	1.21	0.37	0.70	2.28	5
2000.....	1.17	0.38	0.68	2.23	6
1999.....	1.16	0.36	0.69	2.21	6
1998.....	1.14	0.33	0.69	2.17	6
1997.....	1.16	0.32	0.68	2.16	6
1996.....	1.21	0.32	0.69	2.22	5
1995.....	1.14	0.28	0.70	2.12	6
1994.....	1.13	0.27	0.77	2.18	6
1993.....	1.15	0.29	0.79	2.22	6
1992.....	1.16	0.29	0.78	2.23	6
1991.....	1.18	0.30	0.77	2.25	6
1990.....	1.21	0.31	0.82	2.34	6
1989.....	1.26	0.34	0.86	2.46	6
1988.....	1.29	0.36	0.91	2.55	5
1987.....	1.27	0.38	0.91	2.56	5
1986.....	1.29	0.36	0.92	2.57	6
1985.....	1.29	0.33	0.94	2.56	6
1984.....	1.25	0.31	1.02	2.57	6
1983.....	1.32	0.29	1.03	2.64	6
1982.....	1.30	0.30	1.02	2.62	6
1981.....	1.24	0.28	1.05	2.57	7
1980.....	1.32	0.28	1.06	2.66	6
1979.....	1.27	0.27	1.05	2.59	6
1978.....	1.28	0.26	1.03	2.57	6
1977.....	1.35	0.23	1.02	2.60	6
Maryland					
2022.....	0.63	0.34	1.12	2.09	9
2021.....	0.76	0.39	1.05	2.20	8
2020.....	0.76	0.40	0.95	2.11	9
2019.....	0.74	0.38	0.90	2.03	9
2018.....	0.78	0.39	0.92	2.08	8
2017.....	0.82	0.40	0.92	2.14	8
2016.....	0.83	0.40	0.92	2.16	8
2015.....	0.85	0.39	0.90	2.14	8
2014.....	0.86	0.39	0.90	2.15	8
2013.....	0.89	0.39	0.90	2.18	8
2012.....	0.91	0.39	0.90	2.21	7
2011.....	0.92	0.39	0.89	2.19	7
2010.....	0.94	0.38	0.89	2.21	7
2009.....	0.96	0.36	0.86	2.19	8
2008.....	0.99	0.36	0.84	2.19	8
2007.....	1.01	0.36	0.84	2.20	7
2006.....	1.01	0.34	0.83	2.18	7
2005.....	1.02	0.34	0.81	2.16	7
2004.....	1.03	0.33	0.79	2.15	7
2003.....	1.03	0.32	0.77	2.12	7
2002.....	1.06	0.31	0.76	2.12	7
2001.....	1.06	0.30	0.75	2.11	7
2000.....	1.04	0.30	0.75	2.09	7
1999.....	1.04	0.30	0.74	2.08	7
1998.....	1.05	0.30	0.73	2.08	7

Decile values (1 = highest) apply only to State-level data. Numbers may not sum because of rounding.

**Table 4.** Per capita ethanol consumption for States, census regions, and the United States, 1977–2022. (Gallons of ethanol, based on population ages 14 and older.) (Continued)

State or other geographic area	Per capita consumption				U.S. decile for all beverages
	Beer	Wine	Spirits	All beverages	
1997.....	1.08	0.29	0.73	2.11	7
1996.....	1.05	0.29	0.74	2.08	7
1995.....	1.07	0.28	0.74	2.09	7
1994.....	1.09	0.28	0.78	2.15	6
1993.....	1.10	0.28	0.80	2.19	7
1992.....	1.11	0.29	0.86	2.26	6
1991.....	1.15	0.30	0.89	2.33	6
1990.....	1.22	0.33	0.96	2.51	5
1989.....	1.20	0.34	0.97	2.52	4
1988.....	1.24	0.36	1.00	2.60	4
1987.....	1.28	0.38	1.06	2.71	4
1986.....	1.28	0.38	1.07	2.73	4
1985.....	1.30	0.36	1.14	2.80	4
1984.....	1.31	0.36	1.17	2.84	4
1983.....	1.34	0.35	1.20	2.89	4
1982.....	1.27	0.32	1.16	2.76	5
1981.....	1.39	0.34	1.33	3.06	4
1980.....	1.41	0.33	1.35	3.08	4
1979.....	1.43	0.31	1.39	3.13	3
1978.....	1.40	0.31	1.38	3.09	3
1977.....	1.36	0.30	1.38	3.05	3
Massachusetts					
2022.....	0.80	0.57	1.45	2.82	3
2021.....	0.85	0.59	1.34	2.78	4
2020.....	0.84	0.61	1.14	2.58	4
2019.....	0.91	0.61	1.04	2.56	4
2018.....	0.91	0.64	1.01	2.56	4
2017.....	0.95	0.66	0.97	2.58	4
2016.....	0.95	0.65	0.97	2.56	4
2015.....	0.96	0.65	0.91	2.52	4
2014.....	0.98	0.66	0.91	2.54	4
2013.....	1.00	0.66	0.89	2.55	4
2012.....	1.03	0.65	0.88	2.56	4
2011.....	1.02	0.64	0.88	2.54	4
2010.....	1.04	0.62	0.84	2.50	4
2009.....	1.03	0.62	0.85	2.49	4
2008.....	1.08	0.62	0.84	2.54	4
2007.....	1.11	0.62	0.87	2.59	4
2006.....	1.10	0.61	0.85	2.56	3
2005.....	1.07	0.59	0.85	2.51	3
2004.....	1.10	0.58	0.84	2.52	3
2003.....	1.10	0.56	0.82	2.49	3
2002.....	1.13	0.54	0.80	2.47	3
2001.....	1.13	0.52	0.79	2.44	3
2000.....	1.16	0.51	0.87	2.55	2
1999.....	1.09	0.51	0.79	2.39	4
1998.....	1.14	0.50	0.75	2.39	3
1997.....	1.13	0.49	0.76	2.39	3
1996.....	1.11	0.48	0.77	2.35	3
1995.....	1.13	0.44	0.78	2.35	3
1994.....	1.14	0.44	0.80	2.38	3
1993.....	1.14	0.44	0.80	2.38	4
1992.....	1.12	0.44	0.82	2.38	5
1991.....	1.19	0.43	0.87	2.49	3

Decile values (1 = highest) apply only to State-level data. Numbers may not sum because of rounding.

**Table 4.** Per capita ethanol consumption for States, census regions, and the United States, 1977–2022. (Gallons of ethanol, based on population ages 14 and older.) (Continued)

State or other geographic area	Per capita consumption				U.S. decile for all beverages
	Beer	Wine	Spirits	All beverages	
1990.....	1.22	0.45	0.97	2.63	3
1989.....	1.24	0.46	1.00	2.70	3
1988.....	1.27	0.49	1.05	2.81	3
1987.....	1.27	0.50	1.11	2.88	3
1986.....	1.29	0.52	1.11	2.92	3
1985.....	1.28	0.50	1.19	2.97	3
1984.....	1.29	0.50	1.23	3.02	3
1983.....	1.36	0.49	1.20	3.05	3
1982.....	1.35	0.50	1.22	3.07	3
1981.....	1.44	0.49	1.24	3.17	3
1980.....	1.46	0.45	1.26	3.18	3
1979.....	1.40	0.43	1.24	3.07	3
1978.....	1.38	0.41	1.26	3.05	3
1977.....	1.35	0.37	1.25	2.97	3
Michigan					
2022.....	0.93	0.39	1.06	2.38	6
2021.....	0.98	0.42	1.09	2.49	5
2020.....	0.99	0.42	1.09	2.50	5
2019.....	1.00	0.40	0.99	2.38	6
2018.....	1.00	0.40	0.96	2.37	6
2017.....	1.01	0.40	0.93	2.34	6
2016.....	1.03	0.39	0.91	2.34	6
2015.....	0.99	0.36	0.89	2.24	7
2014.....	1.05	0.39	0.88	2.32	6
2013.....	1.01	0.37	0.85	2.23	7
2012.....	1.08	0.35	0.84	2.27	7
2011.....	1.07	0.35	0.83	2.25	7
2010.....	1.09	0.33	0.81	2.23	7
2009.....	1.11	0.32	0.80	2.23	7
2008.....	1.13	0.30	0.79	2.22	7
2007.....	1.13	0.30	0.77	2.19	7
2006.....	1.13	0.29	0.76	2.18	7
2005.....	1.15	0.28	0.74	2.16	7
2004.....	1.16	0.27	0.72	2.15	7
2003.....	1.17	0.28	0.72	2.17	7
2002.....	1.19	0.25	0.69	2.13	7
2001.....	1.18	0.23	0.68	2.09	7
2000.....	1.20	0.24	0.68	2.13	7
1999.....	1.20	0.24	0.67	2.11	7
1998.....	1.20	0.22	0.68	2.10	7
1997.....	1.19	0.22	0.66	2.07	7
1996.....	1.22	0.22	0.66	2.09	7
1995.....	1.20	0.19	0.67	2.06	7
1994.....	1.23	0.20	0.67	2.10	7
1993.....	1.26	0.20	0.72	2.18	7
1992.....	1.26	0.22	0.74	2.21	7
1991.....	1.30	0.22	0.74	2.26	6
1990.....	1.33	0.28	0.80	2.42	6
1989.....	1.29	0.30	0.80	2.39	6
1988.....	1.32	0.32	0.84	2.48	6
1987.....	1.32	0.33	0.85	2.51	6
1986.....	1.33	0.33	0.90	2.57	5
1985.....	1.31	0.32	0.96	2.59	6
1984.....	1.33	0.31	0.98	2.61	6

Decile values (1 = highest) apply only to State-level data. Numbers may not sum because of rounding.

**Table 4.** Per capita ethanol consumption for States, census regions, and the United States, 1977–2022. (Gallons of ethanol, based on population ages 14 and older.) (Continued)

State or other geographic area	Per capita consumption				U.S. decile for all beverages
	Beer	Wine	Spirits	All beverages	
1983.....	1.36	0.28	0.98	2.62	6
1982.....	1.35	0.39	0.99	2.73	6
1981.....	1.34	0.29	1.00	2.63	6
1980.....	1.34	0.28	1.02	2.65	6
1979.....	1.36	0.25	1.03	2.65	6
1978.....	1.43	0.25	1.05	2.74	5
1977.....	1.45	0.24	1.02	2.71	5
Minnesota					
2022.....	1.06	0.39	1.40	2.85	3
2021.....	1.13	0.42	1.36	2.91	3
2020.....	1.10	0.44	1.28	2.82	3
2019.....	1.12	0.43	1.23	2.79	3
2018.....	1.14	0.44	1.21	2.79	3
2017.....	1.15	0.44	1.19	2.77	3
2016.....	1.15	0.44	1.17	2.77	3
2015.....	1.16	0.43	1.14	2.73	3
2014.....	1.14	0.44	1.23	2.81	2
2013.....	1.14	0.43	1.16	2.72	3
2012.....	1.18	0.42	1.11	2.71	3
2011.....	1.13	0.34	1.00	2.47	4
2010.....	1.14	0.33	0.97	2.44	4
2009.....	1.19	0.37	1.04	2.59	3
2008.....	1.21	0.36	1.03	2.60	3
2007.....	1.23	0.36	1.01	2.60	3
2006.....	1.15	0.32	0.93	2.40	5
2005.....	1.18	0.33	0.97	2.48	4
2004.....	1.24	0.31	0.94	2.50	3
2003.....	1.22	0.29	0.91	2.43	3
2002.....	1.26	0.28	0.88	2.41	3
2001.....	1.25	0.26	0.88	2.39	4
2000.....	1.24	0.26	0.87	2.37	4
1999.....	1.23	0.27	0.86	2.36	4
1998.....	1.16	0.27	0.84	2.27	4
1997.....	1.20	0.27	0.85	2.31	4
1996.....	1.23	0.26	0.83	2.32	4
1995.....	1.29	0.26	0.83	2.38	3
1994.....	1.27	0.25	0.83	2.35	4
1993.....	1.24	0.24	0.84	2.33	5
1992.....	1.25	0.25	0.85	2.35	5
1991.....	1.30	0.24	0.81	2.35	5
1990.....	1.32	0.27	0.96	2.55	4
1989.....	1.29	0.27	0.89	2.46	6
1988.....	1.31	0.30	0.90	2.51	5
1987.....	1.32	0.32	0.94	2.58	5
1986.....	1.31	0.34	0.93	2.57	5
1985.....	1.31	0.31	1.06	2.68	5
1984.....	1.34	0.28	1.07	2.69	5
1983.....	1.38	0.27	1.10	2.74	6
1982.....	1.37	0.27	1.11	2.75	6
1981.....	1.39	0.27	1.18	2.84	5
1980.....	1.39	0.26	1.20	2.85	5
1979.....	1.36	0.24	1.17	2.77	5
1978.....	1.32	0.23	1.16	2.71	5

Decile values (1 = highest) apply only to State-level data. Numbers may not sum because of rounding.

**Table 4.** Per capita ethanol consumption for States, census regions, and the United States, 1977–2022. (Gallons of ethanol, based on population ages 14 and older.) (Continued)

State or other geographic area	Per capita consumption				U.S. decile for all beverages
	Beer	Wine	Spirits	All beverages	
1977.....	1.31	0.21	1.16	2.67	5
Mississippi					
2022.....	1.14	0.19	0.91	2.25	7
2021.....	1.19	0.21	1.00	2.40	6
2020.....	1.20	0.22	0.98	2.39	6
2019.....	1.20	0.18	0.83	2.21	7
2018.....	1.21	0.18	0.79	2.18	7
2017.....	1.25	0.18	0.77	2.20	7
2016.....	1.28	0.17	0.77	2.23	7
2015.....	1.31	0.17	0.77	2.24	7
2014.....	1.32	0.16	0.75	2.23	7
2013.....	1.35	0.16	0.73	2.24	7
2012.....	1.37	0.16	0.71	2.24	7
2011.....	1.36	0.16	0.71	2.22	7
2010.....	1.37	0.15	0.70	2.22	7
2009.....	1.41	0.15	0.70	2.26	7
2008.....	1.44	0.15	0.70	2.28	7
2007.....	1.45	0.14	0.68	2.26	6
2006.....	1.43	0.13	0.67	2.23	7
2005.....	1.40	0.13	0.65	2.18	7
2004.....	1.38	0.13	0.63	2.14	7
2003.....	1.38	0.12	0.63	2.13	7
2002.....	1.41	0.12	0.61	2.13	7
2001.....	1.40	0.11	0.60	2.11	7
2000.....	1.43	0.11	0.61	2.14	7
1999.....	1.42	0.11	0.61	2.14	7
1998.....	1.40	0.09	0.59	2.08	7
1997.....	1.39	0.09	0.61	2.09	7
1996.....	1.42	0.10	0.62	2.14	6
1995.....	1.37	0.10	0.61	2.09	7
1994.....	1.28	0.08	0.63	2.00	7
1993.....	1.37	0.10	0.63	2.11	7
1992.....	1.35	0.09	0.63	2.08	8
1991.....	1.32	0.09	0.64	2.05	8
1990.....	1.34	0.09	0.65	2.08	8
1989.....	1.28	0.09	0.66	2.04	9
1988.....	1.30	0.09	0.67	2.06	9
1987.....	1.28	0.09	0.66	2.04	9
1986.....	1.28	0.10	0.69	2.07	9
1985.....	1.22	0.10	0.74	2.07	9
1984.....	1.20	0.11	0.77	2.08	9
1983.....	1.20	0.11	0.80	2.10	9
1982.....	1.18	0.11	0.81	2.10	9
1981.....	1.19	0.11	0.84	2.13	9
1980.....	1.13	0.10	0.86	2.09	9
1979.....	1.10	0.09	0.81	2.00	9
1978.....	1.11	0.10	0.88	2.09	8
1977.....	1.04	0.10	0.83	1.98	9
Missouri					
2022.....	1.04	0.35	1.35	2.75	4
2021.....	1.09	0.39	1.32	2.81	4
2020.....	1.08	0.39	1.20	2.68	4
2019.....	1.09	0.37	1.09	2.56	5

Decile values (1 = highest) apply only to State-level data. Numbers may not sum because of rounding.



**Table 4.** Per capita ethanol consumption for States, census regions, and the United States, 1977–2022. (Gallons of ethanol, based on population ages 14 and older.) (Continued)

State or other geographic area	Per capita consumption				U.S. decile for all beverages
	Beer	Wine	Spirits	All beverages	
2018.....	1.11	0.38	1.02	2.51	5
2017.....	1.13	0.39	1.01	2.53	5
2016.....	1.15	0.38	0.96	2.49	5
2015.....	1.17	0.39	0.97	2.53	4
2014.....	1.16	0.36	0.88	2.40	5
2013.....	1.19	0.36	0.89	2.44	5
2012.....	1.22	0.34	0.86	2.42	5
2011.....	1.24	0.34	0.86	2.45	5
2010.....	1.27	0.32	0.81	2.41	5
2009.....	1.30	0.30	0.83	2.43	5
2008.....	1.32	0.30	0.80	2.42	5
2007.....	1.33	0.30	0.78	2.40	5
2006.....	1.33	0.28	0.76	2.37	5
2005.....	1.31	0.27	0.73	2.30	5
2004.....	1.33	0.27	0.72	2.32	5
2003.....	1.34	0.26	0.70	2.29	5
2002.....	1.36	0.25	0.67	2.27	5
2001.....	1.34	0.23	0.67	2.25	5
2000.....	1.35	0.23	0.67	2.25	5
1999.....	1.35	0.23	0.66	2.23	5
1998.....	1.33	0.23	0.63	2.18	6
1997.....	1.30	0.22	0.63	2.15	6
1996.....	1.31	0.22	0.57	2.10	7
1995.....	1.31	0.20	0.62	2.14	6
1994.....	1.36	0.19	0.66	2.21	6
1993.....	1.33	0.20	0.67	2.20	6
1992.....	1.34	0.21	0.69	2.24	6
1991.....	1.35	0.22	0.64	2.20	7
1990.....	1.37	0.22	0.70	2.30	7
1989.....	1.36	0.23	0.70	2.28	7
1988.....	1.35	0.26	0.70	2.31	7
1987.....	1.38	0.28	0.73	2.39	7
1986.....	1.38	0.28	0.73	2.39	7
1985.....	1.34	0.26	0.77	2.37	7
1984.....	1.35	0.26	0.68	2.29	8
1983.....	1.38	0.22	0.78	2.38	8
1982.....	1.39	0.22	0.79	2.39	7
1981.....	1.41	0.22	0.84	2.46	7
1980.....	1.39	0.20	0.84	2.44	7
1979.....	1.36	0.20	0.86	2.42	7
1978.....	1.31	0.19	0.89	2.39	7
1977.....	1.23	0.19	0.83	2.24	8
Montana					
2022.....	1.58	0.50	1.14	3.21	2
2021.....	1.66	0.53	1.14	3.32	1
2020.....	1.65	0.53	1.12	3.30	1
2019.....	1.61	0.51	1.02	3.15	2
2018.....	1.60	0.51	0.99	3.11	2
2017.....	1.61	0.51	0.98	3.10	2
2016.....	1.62	0.52	0.98	3.11	2
2015.....	1.63	0.50	0.96	3.09	2
2014.....	1.62	0.50	0.96	3.08	2
2013.....	1.63	0.49	0.95	3.07	2
2012.....	1.65	0.48	0.94	3.07	2

Decile values (1 = highest) apply only to State-level data. Numbers may not sum because of rounding.

**Table 4.** Per capita ethanol consumption for States, census regions, and the United States, 1977–2022. (Gallons of ethanol, based on population ages 14 and older.) (Continued)

State or other geographic area	Per capita consumption				U.S. decile for all beverages
	Beer	Wine	Spirits	All beverages	
2011.....	1.61	0.47	0.90	2.97	2
2010.....	1.65	0.45	0.88	2.98	2
2009.....	1.64	0.45	0.87	2.96	2
2008.....	1.66	0.44	0.87	2.97	2
2007.....	1.66	0.43	0.85	2.94	2
2006.....	1.63	0.41	0.82	2.87	2
2005.....	1.59	0.42	0.77	2.78	2
2004.....	1.57	0.34	0.75	2.66	2
2003.....	1.56	0.33	0.72	2.62	2
2002.....	1.62	0.33	0.70	2.65	2
2001.....	1.58	0.30	0.68	2.56	2
2000.....	1.57	0.29	0.68	2.54	2
1999.....	1.56	0.28	0.67	2.51	2
1998.....	1.53	0.27	0.65	2.45	2
1997.....	1.41	0.27	0.64	2.32	4
1996.....	1.55	0.26	0.64	2.45	3
1995.....	1.52	0.25	0.78	2.55	2
1994.....	1.57	0.24	0.70	2.51	2
1993.....	1.49	0.25	0.73	2.47	3
1992.....	1.59	0.26	0.75	2.61	2
1991.....	1.61	0.28	0.76	2.64	3
1990.....	1.61	0.29	0.77	2.67	3
1989.....	1.59	0.29	0.73	2.61	4
1988.....	1.61	0.32	0.77	2.70	4
1987.....	1.59	0.34	0.78	2.70	4
1986.....	1.60	0.34	0.82	2.76	4
1985.....	1.62	0.33	0.89	2.84	4
1984.....	1.71	0.32	0.93	2.97	3
1983.....	1.80	0.32	0.99	3.11	3
1982.....	1.82	0.32	1.02	3.16	3
1981.....	1.90	0.33	1.05	3.27	3
1980.....	1.82	0.35	1.03	3.20	3
1979.....	1.83	0.41	1.05	3.29	2
1978.....	1.82	0.20	1.07	3.09	2
1977.....	1.82	0.20	1.10	3.11	2
Nebraska					
2022.....	1.09	0.21	0.86	2.16	8
2021.....	1.16	0.21	0.82	2.19	8
2020.....	1.18	0.21	0.75	2.14	8
2019.....	1.21	0.22	0.74	2.17	8
2018.....	1.22	0.22	0.74	2.17	7
2017.....	1.26	0.22	0.73	2.21	7
2016.....	1.30	0.22	0.73	2.25	7
2015.....	1.34	0.22	0.72	2.28	6
2014.....	1.37	0.21	0.72	2.30	6
2013.....	1.39	0.21	0.71	2.32	6
2012.....	1.41	0.21	0.69	2.31	6
2011.....	1.39	0.21	0.69	2.28	6
2010.....	1.40	0.21	0.67	2.28	6
2009.....	1.42	0.20	0.67	2.29	6
2008.....	1.45	0.20	0.68	2.33	6
2007.....	1.43	0.20	0.67	2.31	6
2006.....	1.42	0.21	0.71	2.35	6
2005.....	1.41	0.20	0.68	2.29	6

Decile values (1 = highest) apply only to State-level data. Numbers may not sum because of rounding.

**Table 4.** Per capita ethanol consumption for States, census regions, and the United States, 1977–2022. (Gallons of ethanol, based on population ages 14 and older.) (Continued)

State or other geographic area	Per capita consumption				U.S. decile for all beverages
	Beer	Wine	Spirits	All beverages	
2004.....	1.44	0.20	0.65	2.28	6
2003.....	1.43	0.19	0.63	2.24	6
2002.....	1.45	0.17	0.61	2.23	6
2001.....	1.43	0.16	0.60	2.20	6
2000.....	1.44	0.17	0.62	2.23	6
1999.....	1.42	0.17	0.60	2.19	6
1998.....	1.39	0.18	0.58	2.16	6
1997.....	1.35	0.18	0.56	2.09	7
1996.....	1.35	0.18	0.57	2.11	6
1995.....	1.35	0.19	0.57	2.10	7
1994.....	1.39	0.18	0.57	2.14	7
1993.....	1.37	0.18	0.59	2.14	7
1992.....	1.37	0.18	0.61	2.16	7
1991.....	1.40	0.18	0.61	2.19	7
1990.....	1.41	0.20	0.64	2.25	7
1989.....	1.41	0.20	0.64	2.26	7
1988.....	1.41	0.22	0.66	2.30	7
1987.....	1.43	0.23	0.67	2.33	7
1986.....	1.41	0.23	0.69	2.33	7
1985.....	1.41	0.22	0.76	2.39	7
1984.....	1.46	0.21	0.77	2.43	7
1983.....	1.50	0.21	0.80	2.51	7
1982.....	1.51	0.28	0.58	2.37	7
1981.....	1.57	0.20	0.88	2.65	6
1980.....	1.56	0.19	0.88	2.63	6
1979.....	1.52	0.18	0.89	2.59	7
1978.....	1.48	0.18	0.90	2.56	6
1977.....	1.46	0.17	0.91	2.54	6
Nevada					
2022.....	1.30	0.57	1.78	3.66	1
2021.....	1.34	0.59	1.64	3.58	1
2020.....	1.33	0.59	1.52	3.44	1
2019.....	1.33	0.59	1.48	3.41	1
2018.....	1.36	0.61	1.48	3.45	1
2017.....	1.40	0.61	1.48	3.49	1
2016.....	1.42	0.62	1.48	3.52	1
2015.....	1.39	0.66	1.30	3.35	1
2014.....	1.41	0.66	1.31	3.38	1
2013.....	1.41	0.63	1.28	3.32	1
2012.....	1.41	0.62	1.25	3.28	1
2011.....	1.45	0.63	1.27	3.35	1
2010.....	1.49	0.60	1.21	3.30	1
2009.....	1.53	0.56	1.11	3.21	1
2008.....	1.63	0.61	1.29	3.53	1
2007.....	1.66	0.62	1.23	3.52	1
2006.....	1.71	0.65	1.28	3.63	1
2005.....	1.69	0.62	1.21	3.52	1
2004.....	1.73	0.63	1.25	3.61	1
2003.....	1.74	0.61	1.23	3.59	1
2002.....	1.74	0.60	1.22	3.56	1
2001.....	1.79	0.59	1.21	3.59	1
2000.....	1.79	0.62	1.26	3.67	1
1999.....	1.82	0.63	1.29	3.74	1
1998.....	1.80	0.58	1.23	3.62	1

Decile values (1 = highest) apply only to State-level data. Numbers may not sum because of rounding.

**Table 4.** Per capita ethanol consumption for States, census regions, and the United States, 1977–2022. (Gallons of ethanol, based on population ages 14 and older.) (Continued)

State or other geographic area	Per capita consumption				U.S. decile for all beverages
	Beer	Wine	Spirits	All beverages	
1997.....	1.84	0.58	1.30	3.72	1
1996.....	1.91	0.59	1.39	3.89	1
1995.....	1.87	0.58	1.39	3.84	1
1994.....	1.93	0.57	1.51	4.00	1
1993.....	1.95	0.58	1.54	4.07	1
1992.....	2.02	0.62	1.61	4.25	1
1991.....	2.05	0.63	1.63	4.31	1
1990.....	2.17	0.69	1.92	4.78	1
1989.....	2.12	0.71	1.87	4.70	1
1988.....	2.08	0.76	1.95	4.80	1
1987.....	2.01	0.83	2.05	4.89	1
1986.....	2.04	0.86	2.07	4.97	1
1985.....	1.96	0.84	2.18	4.99	1
1984.....	1.97	0.80	2.32	5.10	1
1983.....	1.96	0.78	2.43	5.18	1
1982.....	2.00	0.77	2.50	5.27	1
1981.....	2.08	0.80	2.71	5.59	1
1980.....	2.06	0.78	2.90	5.75	1
1979.....	2.07	0.79	2.97	5.83	1
1978.....	2.01	0.77	3.34	6.13	1
1977.....	1.99	0.77	3.56	6.32	1
New Hampshire					
2022.....	1.66	0.80	2.02	4.48	1
2021.....	1.66	0.76	1.80	4.22	1
2020.....	1.58	0.83	2.08	4.50	1
2019.....	1.58	0.82	2.12	4.52	1
2018.....	1.62	0.84	2.04	4.51	1
2017.....	1.66	0.87	2.01	4.54	1
2016.....	1.86	0.88	1.99	4.73	1
2015.....	1.87	0.88	1.95	4.69	1
2014.....	1.68	0.89	1.95	4.52	1
2013.....	1.86	0.89	1.92	4.67	1
2012.....	1.90	0.86	1.88	4.64	1
2011.....	1.86	0.92	1.98	4.76	1
2010.....	1.81	0.84	1.85	4.50	1
2009.....	1.79	0.84	1.84	4.47	1
2008.....	1.78	0.81	1.79	4.39	1
2007.....	1.82	0.79	1.75	4.36	1
2006.....	1.73	0.78	1.77	4.28	1
2005.....	1.75	0.75	1.71	4.20	1
2004.....	1.74	0.73	1.67	4.14	1
2003.....	1.75	0.71	1.63	4.09	1
2002.....	1.75	0.70	1.64	4.09	1
2001.....	1.75	0.66	1.62	4.03	1
2000.....	1.78	0.65	1.63	4.06	1
1999.....	1.78	0.65	1.64	4.07	1
1998.....	1.77	0.55	1.67	3.99	1
1997.....	1.78	0.54	1.72	4.04	1
1996.....	1.78	0.53	1.79	4.11	1
1995.....	1.73	0.50	1.79	4.02	1
1994.....	1.75	0.48	1.90	4.13	1
1993.....	1.83	0.54	2.01	4.38	1
1992.....	1.81	0.52	1.96	4.30	1
1991.....	1.85	0.49	1.96	4.30	1

Decile values (1 = highest) apply only to State-level data. Numbers may not sum because of rounding.

**Table 4.** Per capita ethanol consumption for States, census regions, and the United States, 1977–2022. (Gallons of ethanol, based on population ages 14 and older.) (Continued)

State or other geographic area	Per capita consumption				U.S. decile for all beverages
	Beer	Wine	Spirits	All beverages	
1990.....	1.85	0.49	1.97	4.30	1
1989.....	1.87	0.50	2.00	4.38	1
1988.....	1.91	0.49	1.94	4.34	1
1987.....	1.93	0.50	1.99	4.42	1
1986.....	1.93	0.52	2.06	4.52	1
1985.....	1.99	0.53	2.22	4.74	1
1984.....	1.99	0.59	2.33	4.92	1
1983.....	2.17	0.56	2.36	5.09	1
1982.....	1.90	0.59	2.35	4.84	1
1981.....	1.89	0.59	2.43	4.91	1
1980.....	1.93	0.60	2.49	5.02	1
1979.....	1.94	0.61	2.56	5.10	1
1978.....	1.95	0.53	2.88	5.36	1
1977.....	1.86	0.49	2.88	5.23	1
New Jersey					
2022.....	0.74	0.51	1.28	2.53	5
2021.....	0.82	0.55	1.25	2.62	5
2020.....	0.78	0.58	1.16	2.52	5
2019.....	0.80	0.58	1.01	2.39	5
2018.....	0.80	0.58	0.98	2.36	6
2017.....	0.80	0.60	0.96	2.36	5
2016.....	0.83	0.60	0.93	2.36	5
2015.....	0.84	0.60	0.93	2.37	5
2014.....	0.84	0.62	0.93	2.39	5
2013.....	0.84	0.61	0.92	2.37	5
2012.....	0.89	0.60	0.91	2.40	5
2011.....	0.89	0.58	0.89	2.37	5
2010.....	0.92	0.57	0.86	2.35	5
2009.....	0.91	0.57	0.86	2.34	6
2008.....	0.93	0.55	0.86	2.35	6
2007.....	0.93	0.55	0.86	2.33	6
2006.....	0.95	0.54	0.85	2.33	6
2005.....	0.95	0.52	0.83	2.30	5
2004.....	0.96	0.52	0.82	2.30	6
2003.....	0.95	0.50	0.80	2.24	6
2002.....	0.98	0.49	0.77	2.24	6
2001.....	0.99	0.47	0.75	2.20	6
2000.....	0.97	0.47	0.76	2.20	6
1999.....	0.97	0.47	0.74	2.18	6
1998.....	0.98	0.46	0.71	2.15	6
1997.....	0.99	0.46	0.74	2.19	5
1996.....	1.00	0.44	0.76	2.20	6
1995.....	1.06	0.44	0.79	2.28	4
1994.....	1.04	0.43	0.79	2.27	5
1993.....	1.07	0.42	0.79	2.29	5
1992.....	1.07	0.44	0.83	2.34	5
1991.....	1.09	0.43	0.82	2.34	6
1990.....	1.15	0.48	0.95	2.58	4
1989.....	1.13	0.50	0.95	2.58	4
1988.....	1.15	0.51	0.93	2.58	4
1987.....	1.18	0.54	1.00	2.72	4
1986.....	1.17	0.56	1.03	2.77	3
1985.....	1.17	0.55	1.07	2.79	4
1984.....	1.18	0.54	1.10	2.82	4

Decile values (1 = highest) apply only to State-level data. Numbers may not sum because of rounding.

**Table 4.** Per capita ethanol consumption for States, census regions, and the United States, 1977–2022. (Gallons of ethanol, based on population ages 14 and older.) (Continued)

State or other geographic area	Per capita consumption				U.S. decile for all beverages
	Beer	Wine	Spirits	All beverages	
1983.....	1.20	0.52	1.13	2.85	4
1982.....	1.21	0.52	1.13	2.87	4
1981.....	1.21	0.51	1.15	2.87	5
1980.....	1.22	0.47	1.13	2.82	5
1979.....	1.18	0.43	1.10	2.71	6
1978.....	1.17	0.41	1.10	2.69	6
1977.....	1.16	0.40	1.13	2.69	5
New Mexico					
2022.....	1.17	0.30	0.92	2.39	6
2021.....	1.21	0.31	0.85	2.37	7
2020.....	1.20	0.31	0.79	2.29	7
2019.....	1.17	0.31	0.78	2.26	6
2018.....	1.07	0.31	0.89	2.27	6
2017.....	1.05	0.30	0.81	2.16	7
2016.....	1.10	0.31	0.84	2.26	6
2015.....	1.02	0.30	0.78	2.10	8
2014.....	1.29	0.31	0.82	2.41	4
2013.....	1.17	0.34	0.84	2.34	5
2012.....	1.24	0.33	0.79	2.36	6
2011.....	1.32	0.31	0.72	2.35	6
2010.....	1.23	0.31	0.74	2.28	6
2009.....	1.34	0.31	0.72	2.38	5
2008.....	1.41	0.31	0.71	2.43	5
2007.....	1.39	0.30	0.70	2.39	5
2006.....	1.37	0.30	0.69	2.36	5
2005.....	1.47	0.29	0.66	2.42	4
2004.....	1.46	0.25	0.66	2.36	5
2003.....	1.52	0.27	0.61	2.40	4
2002.....	1.52	0.26	0.61	2.40	4
2001.....	1.54	0.25	0.61	2.39	4
2000.....	1.53	0.25	0.61	2.38	4
1999.....	1.53	0.25	0.59	2.36	4
1998.....	1.49	0.24	0.58	2.31	4
1997.....	1.51	0.24	0.58	2.33	3
1996.....	1.55	0.24	0.59	2.38	3
1995.....	1.56	0.24	0.60	2.40	3
1994.....	1.46	0.19	0.60	2.25	5
1993.....	1.53	0.23	0.63	2.39	3
1992.....	1.56	0.25	0.66	2.47	4
1991.....	1.64	0.26	0.64	2.54	3
1990.....	1.68	0.28	0.68	2.64	3
1989.....	1.67	0.29	0.66	2.62	4
1988.....	1.66	0.33	0.68	2.67	4
1987.....	1.65	0.36	0.68	2.69	4
1986.....	1.66	0.36	0.71	2.73	4
1985.....	1.71	0.36	0.77	2.84	4
1984.....	1.72	0.28	0.76	2.76	5
1983.....	1.72	0.31	0.98	3.01	4
1982.....	1.72	0.34	0.93	2.99	4
1981.....	1.73	0.32	0.95	3.00	4
1980.....	1.65	0.32	0.99	2.97	4
1979.....	1.64	0.29	0.97	2.91	4
1978.....	1.65	0.31	0.96	2.93	4

Decile values (1 = highest) apply only to State-level data. Numbers may not sum because of rounding.

**Table 4.** Per capita ethanol consumption for States, census regions, and the United States, 1977–2022. (Gallons of ethanol, based on population ages 14 and older.) (Continued)

State or other geographic area	Per capita consumption				U.S. decile for all beverages
	Beer	Wine	Spirits	All beverages	
1977.....	1.62	0.31	0.95	2.88	4
New York					
2022.....	0.83	0.46	0.96	2.24	7
2021.....	0.88	0.49	0.89	2.26	8
2020.....	0.81	0.49	0.84	2.14	8
2019.....	0.88	0.54	0.81	2.22	7
2018.....	0.88	0.52	0.81	2.21	7
2017.....	0.90	0.54	0.79	2.23	7
2016.....	0.91	0.53	0.79	2.23	7
2015.....	0.91	0.50	0.77	2.19	7
2014.....	0.90	0.54	0.77	2.20	7
2013.....	0.93	0.51	0.77	2.22	7
2012.....	0.91	0.51	0.75	2.17	8
2011.....	0.89	0.50	0.73	2.11	8
2010.....	0.89	0.48	0.71	2.09	8
2009.....	0.92	0.47	0.70	2.08	8
2008.....	0.93	0.47	0.68	2.08	8
2007.....	0.93	0.47	0.69	2.10	8
2006.....	0.89	0.46	0.66	2.01	8
2005.....	0.91	0.43	0.65	1.99	9
2004.....	0.92	0.42	0.62	1.96	9
2003.....	0.93	0.40	0.61	1.94	9
2002.....	0.95	0.38	0.59	1.92	9
2001.....	0.96	0.37	0.56	1.89	9
2000.....	0.92	0.38	0.58	1.88	9
1999.....	0.93	0.37	0.56	1.85	9
1998.....	0.95	0.38	0.51	1.84	9
1997.....	0.86	0.36	0.56	1.79	9
1996.....	0.91	0.36	0.57	1.84	9
1995.....	1.00	0.38	0.57	1.95	8
1994.....	0.98	0.35	0.60	1.93	8
1993.....	1.00	0.35	0.62	1.97	8
1992.....	1.04	0.37	0.68	2.09	8
1991.....	1.09	0.37	0.69	2.14	7
1990.....	1.13	0.41	0.76	2.30	7
1989.....	1.11	0.42	0.81	2.34	7
1988.....	1.14	0.44	0.86	2.45	6
1987.....	1.14	0.47	0.90	2.51	6
1986.....	1.12	0.50	0.91	2.53	6
1985.....	1.14	0.49	0.98	2.61	5
1984.....	1.14	0.49	1.03	2.67	5
1983.....	1.23	0.49	1.05	2.77	5
1982.....	1.26	0.48	1.11	2.85	4
1981.....	1.25	0.46	1.12	2.83	5
1980.....	1.27	0.46	1.17	2.91	5
1979.....	1.21	0.44	1.17	2.83	5
1978.....	1.18	0.42	1.18	2.78	5
1977.....	1.18	0.39	1.18	2.75	5
North Carolina					
2022.....	1.03	0.49	0.82	2.34	7
2021.....	1.07	0.49	0.82	2.38	7
2020.....	1.07	0.48	0.79	2.34	6
2019.....	1.04	0.45	0.70	2.20	7

Decile values (1 = highest) apply only to State-level data. Numbers may not sum because of rounding.

**Table 4.** Per capita ethanol consumption for States, census regions, and the United States, 1977–2022. (Gallons of ethanol, based on population ages 14 and older.) (Continued)

State or other geographic area	Per capita consumption				U.S. decile for all beverages
	Beer	Wine	Spirits	All beverages	
2018.....	1.04	0.45	0.68	2.16	7
2017.....	1.05	0.44	0.65	2.13	8
2016.....	1.05	0.43	0.64	2.12	9
2015.....	1.05	0.42	0.63	2.10	8
2014.....	1.05	0.41	0.61	2.07	8
2013.....	1.04	0.40	0.60	2.04	9
2012.....	1.06	0.38	0.60	2.04	8
2011.....	1.05	0.37	0.58	2.01	9
2010.....	1.07	0.35	0.57	2.00	9
2009.....	1.10	0.34	0.57	2.01	9
2008.....	1.13	0.33	0.57	2.03	9
2007.....	1.15	0.34	0.56	2.04	9
2006.....	1.14	0.33	0.54	2.01	9
2005.....	1.13	0.30	0.54	1.96	9
2004.....	1.16	0.30	0.53	1.99	8
2003.....	1.21	0.27	0.52	2.00	8
2002.....	1.25	0.27	0.50	2.02	8
2001.....	1.24	0.25	0.51	2.00	8
2000.....	1.22	0.25	0.52	1.98	8
1999.....	1.21	0.24	0.51	1.96	8
1998.....	1.21	0.23	0.50	1.94	8
1997.....	1.22	0.23	0.52	1.97	7
1996.....	1.21	0.24	0.53	1.98	7
1995.....	1.12	0.21	0.53	1.87	9
1994.....	1.14	0.21	0.54	1.89	8
1993.....	1.14	0.22	0.56	1.92	9
1992.....	1.14	0.23	0.59	1.96	8
1991.....	1.11	0.24	0.60	1.96	9
1990.....	1.16	0.27	0.65	2.08	9
1989.....	1.13	0.27	0.66	2.05	8
1988.....	1.11	0.28	0.68	2.08	8
1987.....	1.11	0.28	0.71	2.09	9
1986.....	1.11	0.30	0.74	2.15	8
1985.....	1.10	0.27	0.76	2.13	8
1984.....	1.11	0.24	0.78	2.13	8
1983.....	1.11	0.22	0.80	2.12	9
1982.....	1.07	0.21	0.85	2.13	9
1981.....	1.10	0.21	0.86	2.16	9
1980.....	1.10	0.20	0.85	2.16	9
1979.....	1.04	0.21	0.84	2.09	9
1978.....	1.02	0.19	0.83	2.04	9
1977.....	0.98	0.19	0.81	1.98	9
North Dakota					
2022.....	1.38	0.31	1.62	3.31	1
2021.....	1.48	0.32	1.47	3.28	2
2020.....	1.45	0.33	1.42	3.19	2
2019.....	1.48	0.33	1.37	3.18	1
2018.....	1.50	0.34	1.33	3.16	1
2017.....	1.51	0.34	1.30	3.14	1
2016.....	1.51	0.34	1.29	3.13	1
2015.....	1.58	0.35	1.32	3.26	1
2014.....	1.68	0.35	1.39	3.42	1
2013.....	1.69	0.32	1.38	3.39	1
2012.....	1.75	0.30	1.37	3.42	1

Decile values (1 = highest) apply only to State-level data. Numbers may not sum because of rounding.



**Table 4.** Per capita ethanol consumption for States, census regions, and the United States, 1977–2022. (Gallons of ethanol, based on population ages 14 and older.) (Continued)

State or other geographic area	Per capita consumption				U.S. decile for all beverages
	Beer	Wine	Spirits	All beverages	
2011.....	1.66	0.26	1.26	3.18	1
2010.....	1.49	0.25	1.19	2.93	2
2009.....	1.59	0.24	1.13	2.96	2
2008.....	1.60	0.23	1.11	2.94	2
2007.....	1.53	0.23	1.06	2.82	2
2006.....	1.50	0.20	1.00	2.70	3
2005.....	1.48	0.18	0.94	2.60	3
2004.....	1.49	0.18	0.82	2.49	3
2003.....	1.53	0.17	0.86	2.56	2
2002.....	1.51	0.16	0.83	2.50	3
2001.....	1.46	0.15	0.81	2.42	3
2000.....	1.47	0.15	0.79	2.40	4
1999.....	1.48	0.15	0.78	2.41	3
1998.....	1.45	0.13	0.76	2.35	4
1997.....	1.40	0.13	0.77	2.30	4
1996.....	1.40	0.13	0.77	2.30	4
1995.....	1.36	0.16	0.77	2.28	4
1994.....	1.39	0.15	0.78	2.32	4
1993.....	1.37	0.15	0.84	2.36	4
1992.....	1.38	0.15	0.85	2.39	5
1991.....	1.43	0.16	0.86	2.44	4
1990.....	1.47	0.17	0.93	2.56	4
1989.....	1.41	0.17	0.86	2.44	6
1988.....	1.41	0.19	0.88	2.48	6
1987.....	1.37	0.21	0.89	2.47	6
1986.....	1.34	0.22	0.87	2.44	7
1985.....	1.34	0.19	0.96	2.50	7
1984.....	1.41	0.17	0.99	2.56	6
1983.....	1.49	0.17	1.05	2.71	6
1982.....	1.52	0.18	1.09	2.79	5
1981.....	1.53	0.18	1.14	2.85	5
1980.....	1.52	0.17	1.13	2.82	5
1979.....	1.46	0.16	1.10	2.72	5
1978.....	1.45	0.16	1.15	2.76	5
1977.....	1.35	0.15	1.12	2.62	6
Ohio					
2022.....	1.07	0.31	0.71	2.09	9
2021.....	1.11	0.31	0.73	2.15	9
2020.....	1.09	0.31	0.70	2.10	9
2019.....	1.10	0.31	0.64	2.05	8
2018.....	1.10	0.31	0.62	2.03	9
2017.....	1.13	0.31	0.60	2.03	9
2016.....	1.16	0.31	0.58	2.04	9
2015.....	1.17	0.30	0.56	2.03	9
2014.....	1.19	0.29	0.54	2.03	9
2013.....	1.22	0.30	0.53	2.04	8
2012.....	1.23	0.29	0.51	2.03	9
2011.....	1.24	0.28	0.49	2.02	9
2010.....	1.29	0.25	0.48	2.02	8
2009.....	1.30	0.27	0.47	2.03	8
2008.....	1.33	0.26	0.46	2.05	9
2007.....	1.34	0.25	0.45	2.04	9
2006.....	1.33	0.24	0.44	2.01	8
2005.....	1.34	0.23	0.43	2.00	8

Decile values (1 = highest) apply only to State-level data. Numbers may not sum because of rounding.

**Table 4.** Per capita ethanol consumption for States, census regions, and the United States, 1977–2022. (Gallons of ethanol, based on population ages 14 and older.) (Continued)

State or other geographic area	Per capita consumption				U.S. decile for all beverages
	Beer	Wine	Spirits	All beverages	
2004.....	1.34	0.22	0.42	1.97	9
2003.....	1.34	0.22	0.40	1.95	9
2002.....	1.35	0.21	0.39	1.95	8
2001.....	1.34	0.21	0.39	1.93	9
2000.....	1.32	0.21	0.38	1.91	9
1999.....	1.32	0.20	0.37	1.90	9
1998.....	1.30	0.19	0.44	1.94	8
1997.....	1.28	0.19	0.43	1.90	8
1996.....	1.36	0.18	0.43	1.97	8
1995.....	1.29	0.17	0.43	1.89	8
1994.....	1.31	0.16	0.37	1.85	9
1993.....	1.29	0.16	0.50	1.95	8
1992.....	1.32	0.17	0.50	1.98	8
1991.....	1.33	0.18	0.51	2.03	8
1990.....	1.34	0.22	0.53	2.09	8
1989.....	1.36	0.22	0.51	2.09	8
1988.....	1.35	0.24	0.55	2.13	8
1987.....	1.35	0.24	0.59	2.18	8
1986.....	1.32	0.25	0.60	2.18	8
1985.....	1.37	0.25	0.59	2.21	8
1984.....	1.41	0.25	0.61	2.27	8
1983.....	1.36	0.22	0.65	2.23	8
1982.....	1.40	0.22	0.66	2.28	8
1981.....	1.35	0.22	0.68	2.25	8
1980.....	1.39	0.21	0.72	2.33	8
1979.....	1.35	0.19	0.70	2.25	8
1978.....	1.19	0.20	0.70	2.08	9
1977.....	1.16	0.18	0.70	2.03	8
Oklahoma					
2022.....	0.94	0.18	0.76	1.88	10
2021.....	0.98	0.19	0.72	1.90	10
2020.....	0.99	0.19	0.68	1.86	10
2019.....	0.99	0.19	0.66	1.85	10
2018.....	1.00	0.20	0.66	1.86	10
2017.....	1.03	0.20	0.65	1.88	10
2016.....	1.05	0.20	0.64	1.89	10
2015.....	1.07	0.19	0.63	1.89	10
2014.....	1.09	0.19	0.63	1.91	10
2013.....	1.11	0.19	0.62	1.93	9
2012.....	1.14	0.19	0.61	1.94	10
2011.....	1.14	0.19	0.59	1.92	9
2010.....	1.16	0.18	0.58	1.92	9
2009.....	1.17	0.18	0.58	1.93	9
2008.....	1.22	0.18	0.58	1.97	9
2007.....	1.17	0.17	0.57	1.91	9
2006.....	1.13	0.17	0.56	1.87	10
2005.....	1.09	0.16	0.55	1.80	10
2004.....	1.11	0.13	0.46	1.70	10
2003.....	1.06	0.13	0.74	1.93	9
2002.....	1.12	0.13	0.58	1.82	10
2001.....	1.11	0.12	0.43	1.65	10
2000.....	1.12	0.12	0.44	1.69	10
1999.....	1.11	0.12	0.44	1.68	10
1998.....	1.12	0.12	0.43	1.68	10

Decile values (1 = highest) apply only to State-level data. Numbers may not sum because of rounding.

**Table 4.** Per capita ethanol consumption for States, census regions, and the United States, 1977–2022. (Gallons of ethanol, based on population ages 14 and older.) (Continued)

State or other geographic area	Per capita consumption				U.S. decile for all beverages
	Beer	Wine	Spirits	All beverages	
1997.....	1.10	0.12	0.43	1.65	10
1996.....	1.09	0.12	0.45	1.66	10
1995.....	1.10	0.12	0.44	1.66	10
1994.....	1.15	0.13	0.50	1.78	9
1993.....	1.11	0.11	0.48	1.70	10
1992.....	1.13	0.13	0.55	1.81	9
1991.....	1.09	0.13	0.54	1.76	10
1990.....	1.12	0.14	0.55	1.81	10
1989.....	1.08	0.14	0.54	1.75	10
1988.....	1.07	0.14	0.52	1.73	10
1987.....	1.06	0.15	0.58	1.79	10
1986.....	1.06	0.15	0.62	1.84	10
1985.....	1.05	0.15	0.68	1.88	10
1984.....	1.00	0.16	0.74	1.91	10
1983.....	1.04	0.16	0.77	1.97	9
1982.....	1.15	0.16	0.82	2.14	9
1981.....	1.14	0.16	0.83	2.13	9
1980.....	1.07	0.16	0.71	1.94	9
1979.....	1.03	0.13	0.78	1.94	9
1978.....	1.05	0.14	0.80	2.00	9
1977.....	1.04	0.13	0.77	1.95	9
Oregon					
2022.....	1.21	0.57	1.02	2.80	4
2021.....	1.09	0.67	1.04	2.80	4
2020.....	1.13	0.54	1.04	2.70	3
2019.....	1.16	0.57	0.98	2.71	3
2018.....	1.21	0.58	0.95	2.74	3
2017.....	1.24	0.59	0.93	2.76	3
2016.....	1.24	0.60	0.91	2.75	3
2015.....	1.23	0.58	0.90	2.71	3
2014.....	1.23	0.57	0.90	2.70	3
2013.....	1.20	0.57	0.89	2.66	4
2012.....	1.21	0.57	0.89	2.66	3
2011.....	1.18	0.56	0.85	2.59	3
2010.....	1.19	0.49	0.83	2.51	4
2009.....	1.28	0.49	0.82	2.59	3
2008.....	1.22	0.49	0.83	2.54	4
2007.....	1.35	0.50	0.81	2.65	3
2006.....	1.32	0.49	0.78	2.59	3
2005.....	1.16	0.50	0.75	2.40	5
2004.....	1.23	0.49	0.72	2.44	4
2003.....	1.20	0.47	0.69	2.36	5
2002.....	1.22	0.46	0.66	2.34	4
2001.....	1.22	0.43	0.65	2.30	4
2000.....	1.20	0.44	0.64	2.28	5
1999.....	1.21	0.43	0.63	2.27	4
1998.....	1.20	0.43	0.61	2.25	4
1997.....	1.19	0.44	0.60	2.24	5
1996.....	1.23	0.44	0.61	2.27	5
1995.....	1.21	0.42	0.59	2.23	5
1994.....	1.23	0.37	0.62	2.21	6
1993.....	1.24	0.43	0.64	2.31	5
1992.....	1.29	0.46	0.67	2.41	4
1991.....	1.28	0.44	0.67	2.38	5

Decile values (1 = highest) apply only to State-level data. Numbers may not sum because of rounding.

**Table 4.** Per capita ethanol consumption for States, census regions, and the United States, 1977–2022. (Gallons of ethanol, based on population ages 14 and older.) (Continued)

State or other geographic area	Per capita consumption				U.S. decile for all beverages
	Beer	Wine	Spirits	All beverages	
1990.....	1.32	0.47	0.73	2.51	5
1989.....	1.28	0.47	0.70	2.46	5
1988.....	1.29	0.52	0.72	2.52	5
1987.....	1.28	0.53	0.73	2.54	5
1986.....	1.28	0.55	0.74	2.57	6
1985.....	1.25	0.55	0.77	2.58	6
1984.....	1.28	0.53	0.82	2.63	6
1983.....	1.32	0.53	0.85	2.70	6
1982.....	1.32	0.52	0.88	2.72	6
1981.....	1.37	0.50	0.92	2.79	6
1980.....	1.36	0.50	0.94	2.81	5
1979.....	1.36	0.47	0.94	2.77	5
1978.....	1.32	0.46	0.96	2.74	5
1977.....	1.30	0.45	0.94	2.70	5
Pennsylvania					
2022.....	1.33	0.30	0.83	2.46	5
2021.....	1.35	0.31	0.80	2.45	6
2020.....	1.31	0.31	0.66	2.29	7
2019.....	1.32	0.33	0.74	2.39	5
2018.....	1.31	0.33	0.72	2.36	6
2017.....	1.30	0.33	0.72	2.34	6
2016.....	1.31	0.33	0.72	2.36	5
2015.....	1.31	0.32	0.70	2.33	6
2014.....	1.33	0.32	0.70	2.34	6
2013.....	1.34	0.31	0.68	2.33	6
2012.....	1.36	0.31	0.67	2.34	6
2011.....	1.37	0.30	0.66	2.33	6
2010.....	1.37	0.29	0.64	2.30	6
2009.....	1.37	0.28	0.63	2.27	7
2008.....	1.36	0.26	0.61	2.23	7
2007.....	1.35	0.25	0.58	2.18	7
2006.....	1.32	0.23	0.55	2.10	8
2005.....	1.32	0.23	0.55	2.11	7
2004.....	1.30	0.23	0.53	2.06	8
2003.....	1.31	0.22	0.51	2.04	8
2002.....	1.35	0.21	0.49	2.06	7
2001.....	1.33	0.20	0.48	2.02	8
2000.....	1.29	0.20	0.47	1.96	8
1999.....	1.27	0.20	0.46	1.92	8
1998.....	1.21	0.18	0.45	1.85	9
1997.....	1.33	0.18	0.45	1.95	8
1996.....	1.26	0.18	0.45	1.88	8
1995.....	1.26	0.17	0.45	1.88	8
1994.....	1.28	0.18	0.47	1.93	8
1993.....	1.31	0.17	0.48	1.96	8
1992.....	1.30	0.18	0.51	1.99	8
1991.....	1.36	0.17	0.52	2.05	8
1990.....	1.42	0.18	0.55	2.15	8
1989.....	1.38	0.18	0.57	2.13	8
1988.....	1.41	0.19	0.54	2.14	8
1987.....	1.40	0.20	0.62	2.22	8
1986.....	1.40	0.21	0.64	2.25	8
1985.....	1.38	0.21	0.65	2.23	8
1984.....	1.38	0.21	0.67	2.26	8

Decile values (1 = highest) apply only to State-level data. Numbers may not sum because of rounding.

**Table 4.** Per capita ethanol consumption for States, census regions, and the United States, 1977–2022. (Gallons of ethanol, based on population ages 14 and older.) (Continued)

State or other geographic area	Per capita consumption				U.S. decile for all beverages
	Beer	Wine	Spirits	All beverages	
1983.....	1.41	0.22	0.67	2.31	8
1982.....	1.44	0.23	0.70	2.37	8
1981.....	1.42	0.23	0.72	2.38	8
1980.....	1.45	0.22	0.71	2.39	7
1979.....	1.40	0.22	0.72	2.34	8
1978.....	1.35	0.21	0.73	2.30	8
1977.....	1.34	0.20	0.74	2.27	8
Rhode Island					
2022.....	0.74	0.52	1.53	2.78	4
2021.....	0.82	0.54	1.50	2.86	3
2020.....	0.79	0.53	1.28	2.61	4
2019.....	0.87	0.55	1.16	2.58	4
2018.....	0.90	0.57	1.15	2.63	4
2017.....	0.93	0.58	1.09	2.60	4
2016.....	0.94	0.58	1.05	2.56	4
2015.....	0.95	0.57	0.99	2.52	5
2014.....	1.01	0.51	0.86	2.38	5
2013.....	1.00	0.57	0.98	2.55	4
2012.....	1.03	0.59	0.97	2.58	4
2011.....	1.04	0.58	0.94	2.55	4
2010.....	1.06	0.56	0.92	2.54	3
2009.....	1.07	0.55	0.85	2.47	4
2008.....	1.09	0.52	0.84	2.46	5
2007.....	1.10	0.53	0.82	2.45	5
2006.....	1.07	0.51	0.83	2.41	5
2005.....	0.98	0.49	0.82	2.29	6
2004.....	1.13	0.50	0.80	2.42	4
2003.....	1.13	0.51	0.80	2.45	3
2002.....	1.17	0.48	0.74	2.40	4
2001.....	1.19	0.46	0.70	2.36	4
2000.....	1.16	0.46	0.70	2.31	4
1999.....	1.14	0.45	0.69	2.29	4
1998.....	1.14	0.47	0.63	2.24	5
1997.....	1.22	0.44	0.64	2.30	4
1996.....	1.16	0.42	0.66	2.24	5
1995.....	1.18	0.38	0.63	2.19	6
1994.....	1.23	0.38	0.66	2.27	5
1993.....	1.22	0.36	0.69	2.27	6
1992.....	1.24	0.39	0.70	2.33	6
1991.....	1.33	0.37	0.71	2.41	4
1990.....	1.31	0.44	0.79	2.54	5
1989.....	1.35	0.46	0.86	2.67	3
1988.....	1.38	0.49	0.96	2.82	3
1987.....	1.39	0.51	0.93	2.83	3
1986.....	1.40	0.53	0.92	2.85	3
1985.....	1.40	0.51	1.03	2.93	3
1984.....	1.37	0.52	1.03	2.92	3
1983.....	1.48	0.50	1.06	3.04	3
1982.....	1.34	0.55	1.04	2.94	4
1981.....	1.36	0.53	1.04	2.92	4
1980.....	1.46	0.53	1.13	3.13	3
1979.....	1.42	0.49	1.08	2.98	4
1978.....	1.37	0.48	1.13	2.98	4

Decile values (1 = highest) apply only to State-level data. Numbers may not sum because of rounding.

**Table 4.** Per capita ethanol consumption for States, census regions, and the United States, 1977–2022. (Gallons of ethanol, based on population ages 14 and older.) (Continued)

State or other geographic area	Per capita consumption				U.S. decile for all beverages
	Beer	Wine	Spirits	All beverages	
1977.....	1.35	0.42	1.09	2.86	4
South Carolina					
2022.....	1.00	0.24	0.89	2.13	9
2021.....	1.06	0.25	0.88	2.18	9
2020.....	1.08	0.25	0.83	2.16	8
2019.....	1.08	0.25	0.81	2.14	8
2018.....	1.10	0.25	0.81	2.16	8
2017.....	1.14	0.25	0.80	2.19	7
2016.....	1.18	0.25	0.80	2.23	7
2015.....	1.21	0.25	0.80	2.26	7
2014.....	1.23	0.25	0.80	2.28	7
2013.....	1.26	0.25	0.80	2.31	6
2012.....	1.28	0.25	0.79	2.32	6
2011.....	1.29	0.25	0.78	2.31	6
2010.....	1.31	0.24	0.76	2.31	6
2009.....	1.35	0.24	0.76	2.34	6
2008.....	1.39	0.24	0.76	2.40	5
2007.....	1.42	0.24	0.76	2.42	5
2006.....	1.45	0.24	0.76	2.45	4
2005.....	1.43	0.24	0.75	2.42	4
2004.....	1.39	0.24	0.76	2.38	5
2003.....	1.38	0.23	0.74	2.35	5
2002.....	1.40	0.22	0.67	2.30	5
2001.....	1.40	0.22	0.65	2.27	5
2000.....	1.49	0.22	0.72	2.43	3
1999.....	1.48	0.22	0.72	2.41	3
1998.....	1.44	0.21	0.72	2.37	3
1997.....	1.48	0.20	0.71	2.40	3
1996.....	1.38	0.21	0.71	2.30	4
1995.....	1.33	0.19	0.68	2.20	6
1994.....	1.38	0.17	0.74	2.29	4
1993.....	1.36	0.20	0.75	2.30	5
1992.....	1.34	0.20	0.79	2.33	5
1991.....	1.34	0.22	0.84	2.41	5
1990.....	1.44	0.25	0.92	2.61	4
1989.....	1.39	0.24	0.86	2.49	5
1988.....	1.38	0.26	0.90	2.54	5
1987.....	1.35	0.27	0.89	2.52	6
1986.....	1.31	0.27	0.93	2.52	6
1985.....	1.28	0.25	1.00	2.53	6
1984.....	1.27	0.24	1.01	2.52	7
1983.....	1.27	0.20	1.02	2.49	7
1982.....	1.23	0.20	0.99	2.43	7
1981.....	1.24	0.19	1.04	2.48	7
1980.....	1.22	0.18	1.06	2.45	7
1979.....	1.18	0.16	1.12	2.45	7
1978.....	1.14	0.17	1.15	2.45	7
1977.....	1.12	0.16	1.09	2.37	7
South Dakota					
2022.....	1.26	0.21	0.81	2.28	7
2021.....	1.33	0.22	0.80	2.35	7
2020.....	1.34	0.22	0.78	2.34	6
2019.....	1.35	0.23	0.77	2.35	6

Decile values (1 = highest) apply only to State-level data. Numbers may not sum because of rounding.

**Table 4.** Per capita ethanol consumption for States, census regions, and the United States, 1977–2022. (Gallons of ethanol, based on population ages 14 and older.) (Continued)

State or other geographic area	Per capita consumption				U.S. decile for all beverages
	Beer	Wine	Spirits	All beverages	
2018.....	1.38	0.23	0.78	2.39	5
2017.....	1.53	0.30	1.02	2.85	2
2016.....	1.46	0.31	1.10	2.88	2
2015.....	1.49	0.29	1.03	2.80	2
2014.....	1.50	0.25	0.99	2.75	3
2013.....	1.53	0.28	1.02	2.82	2
2012.....	1.54	0.26	0.96	2.76	2
2011.....	1.52	0.28	0.97	2.77	2
2010.....	1.53	0.24	0.92	2.69	3
2009.....	1.54	0.22	0.89	2.65	3
2008.....	1.57	0.22	0.87	2.66	3
2007.....	1.52	0.22	0.87	2.61	3
2006.....	1.51	0.19	0.79	2.50	4
2005.....	1.50	0.19	0.83	2.52	3
2004.....	1.51	0.18	0.76	2.45	4
2003.....	1.52	0.16	0.74	2.41	4
2002.....	1.51	0.15	0.67	2.34	4
2001.....	1.49	0.15	0.71	2.35	4
2000.....	1.46	0.15	0.69	2.30	5
1999.....	1.43	0.14	0.70	2.27	5
1998.....	1.41	0.13	0.68	2.23	5
1997.....	1.33	0.13	0.69	2.15	6
1996.....	1.33	0.13	0.68	2.15	6
1995.....	1.35	0.12	0.73	2.21	5
1994.....	1.38	0.12	0.73	2.24	5
1993.....	1.35	0.12	0.73	2.20	6
1992.....	1.37	0.15	0.74	2.26	6
1991.....	1.37	0.15	0.76	2.27	6
1990.....	1.36	0.18	0.80	2.34	6
1989.....	1.30	0.15	0.72	2.17	7
1988.....	1.25	0.16	0.79	2.21	8
1987.....	1.27	0.20	0.81	2.28	8
1986.....	1.26	0.20	0.83	2.29	8
1985.....	1.23	0.18	0.95	2.35	8
1984.....	1.28	0.17	0.90	2.35	7
1983.....	1.31	0.17	0.96	2.44	7
1982.....	1.29	0.18	0.97	2.44	7
1981.....	1.31	0.19	1.04	2.54	7
1980.....	1.30	0.18	1.07	2.56	7
1979.....	1.23	0.17	1.04	2.44	7
1978.....	1.20	0.17	1.05	2.42	7
1977.....	1.16	0.17	1.07	2.39	7
Tennessee					
2022.....	1.01	0.34	1.07	2.41	5
2021.....	1.01	0.35	1.06	2.42	6
2020.....	0.97	0.35	0.97	2.29	7
2019.....	0.98	0.33	0.88	2.19	8
2018.....	0.98	0.32	0.84	2.14	8
2017.....	0.99	0.32	0.81	2.11	8
2016.....	1.02	0.33	0.79	2.14	8
2015.....	1.03	0.27	0.76	2.06	9
2014.....	1.04	0.25	0.73	2.02	9
2013.....	1.05	0.25	0.70	2.00	9
2012.....	1.07	0.25	0.68	2.00	9

Decile values (1 = highest) apply only to State-level data. Numbers may not sum because of rounding.

**Table 4.** Per capita ethanol consumption for States, census regions, and the United States, 1977–2022. (Gallons of ethanol, based on population ages 14 and older.) (Continued)

State or other geographic area	Per capita consumption				U.S. decile for all beverages
	Beer	Wine	Spirits	All beverages	
2011.....	1.13	0.24	0.66	2.04	8
2010.....	1.04	0.22	0.61	1.88	10
2009.....	1.05	0.21	0.57	1.83	10
2008.....	1.10	0.20	0.57	1.87	10
2007.....	1.13	0.20	0.56	1.90	10
2006.....	1.14	0.19	0.56	1.89	9
2005.....	1.19	0.19	0.55	1.92	9
2004.....	1.22	0.18	0.53	1.93	9
2003.....	1.27	0.18	0.52	1.96	8
2002.....	1.17	0.17	0.51	1.86	9
2001.....	1.15	0.16	0.50	1.81	9
2000.....	1.19	0.16	0.51	1.85	9
1999.....	1.19	0.15	0.49	1.83	9
1998.....	1.19	0.15	0.50	1.84	9
1997.....	1.15	0.15	0.50	1.80	9
1996.....	1.14	0.15	0.51	1.80	9
1995.....	1.17	0.15	0.51	1.83	9
1994.....	1.18	0.15	0.53	1.86	9
1993.....	1.20	0.14	0.54	1.87	9
1992.....	1.21	0.14	0.56	1.90	9
1991.....	1.19	0.13	0.54	1.87	9
1990.....	1.22	0.14	0.60	1.96	9
1989.....	1.20	0.14	0.60	1.93	9
1988.....	1.22	0.15	0.61	1.97	9
1987.....	1.19	0.15	0.63	1.97	9
1986.....	1.18	0.16	0.63	1.98	9
1985.....	1.12	0.16	0.68	1.97	9
1984.....	1.11	0.15	0.70	1.97	9
1983.....	1.11	0.14	0.70	1.95	10
1982.....	1.13	0.14	0.70	1.97	10
1981.....	1.14	0.13	0.71	1.98	10
1980.....	1.10	0.12	0.69	1.91	9
1979.....	1.10	0.11	0.70	1.91	10
1978.....	1.12	0.10	0.70	1.93	9
1977.....	1.07	0.10	0.69	1.86	10
Texas					
2022.....	1.15	0.33	0.88	2.36	6
2021.....	1.23	0.35	0.88	2.47	6
2020.....	1.25	0.35	0.82	2.42	6
2019.....	1.21	0.33	0.74	2.28	6
2018.....	1.22	0.34	0.71	2.26	6
2017.....	1.27	0.35	0.72	2.34	6
2016.....	1.30	0.34	0.69	2.34	6
2015.....	1.28	0.33	0.67	2.29	6
2014.....	1.25	0.33	0.65	2.23	7
2013.....	1.30	0.32	0.63	2.25	7
2012.....	1.33	0.32	0.63	2.28	7
2011.....	1.35	0.31	0.61	2.27	6
2010.....	1.35	0.29	0.59	2.23	7
2009.....	1.41	0.28	0.58	2.26	7
2008.....	1.43	0.27	0.58	2.28	7
2007.....	1.41	0.27	0.56	2.24	7
2006.....	1.43	0.26	0.55	2.24	6
2005.....	1.43	0.25	0.53	2.20	6

Decile values (1 = highest) apply only to State-level data. Numbers may not sum because of rounding.



**Table 4.** Per capita ethanol consumption for States, census regions, and the United States, 1977–2022. (Gallons of ethanol, based on population ages 14 and older.) (Continued)

State or other geographic area	Per capita consumption				U.S. decile for all beverages
	Beer	Wine	Spirits	All beverages	
2004.....	1.45	0.24	0.52	2.21	6
2003.....	1.46	0.23	0.51	2.19	6
2002.....	1.49	0.22	0.50	2.21	6
2001.....	1.51	0.21	0.49	2.21	6
2000.....	1.53	0.22	0.50	2.25	5
1999.....	1.54	0.20	0.49	2.23	5
1998.....	1.52	0.20	0.50	2.21	5
1997.....	1.56	0.19	0.47	2.22	5
1996.....	1.57	0.20	0.49	2.26	5
1995.....	1.58	0.19	0.50	2.27	5
1994.....	1.60	0.20	0.51	2.31	4
1993.....	1.60	0.20	0.53	2.33	4
1992.....	1.65	0.24	0.55	2.45	4
1991.....	1.60	0.25	0.55	2.40	5
1990.....	1.64	0.26	0.58	2.47	6
1989.....	1.62	0.27	0.58	2.46	5
1988.....	1.61	0.28	0.59	2.47	6
1987.....	1.62	0.29	0.61	2.52	6
1986.....	1.67	0.31	0.65	2.63	5
1985.....	1.68	0.30	0.73	2.71	5
1984.....	1.73	0.28	0.79	2.80	4
1983.....	1.72	0.27	0.79	2.78	5
1982.....	1.83	0.18	0.84	2.84	4
1981.....	1.84	0.24	0.85	2.94	4
1980.....	1.75	0.22	0.80	2.77	6
1979.....	1.70	0.14	0.84	2.68	6
1978.....	1.64	0.14	0.82	2.60	6
1977.....	1.59	0.14	0.78	2.51	6
Utah					
2022.....	0.50	0.17	0.57	1.23	10
2021.....	0.53	0.18	0.60	1.30	10
2020.....	0.54	0.19	0.61	1.34	10
2019.....	0.56	0.19	0.57	1.33	10
2018.....	0.58	0.20	0.57	1.35	10
2017.....	0.61	0.20	0.56	1.36	10
2016.....	0.63	0.19	0.52	1.34	10
2015.....	0.65	0.20	0.54	1.40	10
2014.....	0.66	0.19	0.52	1.37	10
2013.....	0.67	0.19	0.51	1.37	10
2012.....	0.69	0.19	0.50	1.37	10
2011.....	0.68	0.18	0.49	1.36	10
2010.....	0.70	0.18	0.47	1.35	10
2009.....	0.72	0.17	0.47	1.36	10
2008.....	0.76	0.17	0.47	1.41	10
2007.....	0.77	0.16	0.44	1.38	10
2006.....	0.73	0.16	0.44	1.33	10
2005.....	0.70	0.16	0.41	1.27	10
2004.....	0.76	0.15	0.39	1.30	10
2003.....	0.76	0.14	0.39	1.30	10
2002.....	0.77	0.14	0.39	1.30	10
2001.....	0.77	0.14	0.39	1.30	10
2000.....	0.75	0.14	0.40	1.29	10
1999.....	0.74	0.13	0.38	1.25	10
1998.....	0.77	0.13	0.37	1.27	10

Decile values (1 = highest) apply only to State-level data. Numbers may not sum because of rounding.

**Table 4.** Per capita ethanol consumption for States, census regions, and the United States, 1977–2022. (Gallons of ethanol, based on population ages 14 and older.) (Continued)

State or other geographic area	Per capita consumption				U.S. decile for all beverages
	Beer	Wine	Spirits	All beverages	
1997.....	0.75	0.13	0.39	1.27	10
1996.....	0.73	0.13	0.37	1.23	10
1995.....	0.71	0.11	0.37	1.19	10
1994.....	0.76	0.09	0.38	1.24	10
1993.....	0.78	0.11	0.39	1.28	10
1992.....	0.79	0.12	0.42	1.33	10
1991.....	0.80	0.12	0.43	1.34	10
1990.....	0.80	0.12	0.46	1.39	10
1989.....	0.81	0.13	0.47	1.41	10
1988.....	0.82	0.14	0.48	1.45	10
1987.....	0.84	0.15	0.49	1.49	10
1986.....	0.88	0.16	0.52	1.57	10
1985.....	0.89	0.15	0.53	1.57	10
1984.....	0.89	0.14	0.52	1.55	10
1983.....	0.89	0.14	0.51	1.54	10
1982.....	1.01	0.15	0.55	1.70	10
1981.....	1.02	0.15	0.59	1.75	10
1980.....	0.96	0.14	0.60	1.70	10
1979.....	0.94	0.15	0.59	1.68	10
1978.....	0.93	0.14	0.59	1.66	10
1977.....	0.94	0.13	0.57	1.64	10
Vermont					
2022.....	1.54	0.72	0.80	3.06	2
2021.....	1.59	0.73	0.81	3.14	2
2020.....	1.58	0.73	0.81	3.12	2
2019.....	1.58	0.75	0.77	3.11	2
2018.....	1.56	0.78	0.76	3.10	2
2017.....	1.57	0.80	0.74	3.11	2
2016.....	1.56	0.79	0.73	3.08	2
2015.....	1.56	0.78	0.73	3.07	2
2014.....	1.56	0.78	0.72	3.06	2
2013.....	1.54	0.74	0.72	3.00	2
2012.....	1.51	0.70	0.71	2.92	2
2011.....	1.46	0.68	0.71	2.85	2
2010.....	1.44	0.64	0.71	2.80	2
2009.....	1.43	0.64	0.70	2.77	2
2008.....	1.45	0.63	0.71	2.79	2
2007.....	1.46	0.62	0.70	2.78	2
2006.....	1.45	0.60	0.69	2.73	2
2005.....	1.44	0.57	0.68	2.69	2
2004.....	1.34	0.55	0.66	2.56	3
2003.....	1.34	0.52	0.65	2.51	3
2002.....	1.34	0.51	0.63	2.48	3
2001.....	1.34	0.48	0.63	2.45	3
2000.....	1.32	0.49	0.63	2.43	3
1999.....	1.32	0.48	0.62	2.42	3
1998.....	1.31	0.46	0.62	2.39	3
1997.....	1.30	0.45	0.63	2.38	3
1996.....	1.35	0.43	0.64	2.42	3
1995.....	1.28	0.41	0.66	2.35	3
1994.....	1.34	0.42	0.74	2.50	3
1993.....	1.34	0.44	0.74	2.52	2
1992.....	1.35	0.44	0.78	2.57	3
1991.....	1.41	0.46	0.82	2.69	2

Decile values (1 = highest) apply only to State-level data. Numbers may not sum because of rounding.

**Table 4.** Per capita ethanol consumption for States, census regions, and the United States, 1977–2022. (Gallons of ethanol, based on population ages 14 and older.) (Continued)

State or other geographic area	Per capita consumption				U.S. decile for all beverages
	Beer	Wine	Spirits	All beverages	
1990.....	1.47	0.48	0.85	2.80	2
1989.....	1.49	0.53	0.89	2.91	2
1988.....	1.54	0.57	0.95	3.05	2
1987.....	1.58	0.59	1.00	3.18	1
1986.....	1.57	0.60	1.06	3.22	1
1985.....	1.51	0.56	1.10	3.17	2
1984.....	1.49	0.49	1.16	3.15	2
1983.....	1.53	0.50	1.20	3.23	2
1982.....	1.48	0.50	1.24	3.22	2
1981.....	1.49	0.50	1.34	3.32	2
1980.....	1.43	0.48	1.38	3.29	2
1979.....	1.53	0.46	1.47	3.46	1
1978.....	1.50	0.46	1.56	3.52	1
1977.....	1.40	0.44	1.55	3.38	1
Virginia					
2022.....	0.89	0.51	0.78	2.18	8
2021.....	0.94	0.53	0.79	2.26	8
2020.....	0.96	0.52	0.78	2.26	7
2019.....	0.95	0.49	0.72	2.16	8
2018.....	0.95	0.49	0.70	2.14	8
2017.....	0.96	0.49	0.67	2.12	8
2016.....	1.00	0.49	0.66	2.14	8
2015.....	1.00	0.48	0.65	2.13	8
2014.....	1.01	0.47	0.63	2.11	8
2013.....	1.02	0.46	0.62	2.10	8
2012.....	1.04	0.46	0.62	2.13	8
2011.....	1.05	0.46	0.61	2.12	8
2010.....	1.08	0.44	0.60	2.12	8
2009.....	1.10	0.42	0.58	2.11	8
2008.....	1.12	0.42	0.58	2.12	8
2007.....	1.13	0.41	0.57	2.10	8
2006.....	1.13	0.39	0.56	2.08	8
2005.....	1.13	0.38	0.54	2.05	8
2004.....	1.14	0.37	0.53	2.04	8
2003.....	1.14	0.36	0.52	2.02	8
2002.....	1.15	0.34	0.51	2.00	8
2001.....	1.15	0.32	0.50	1.97	8
2000.....	1.16	0.31	0.49	1.97	8
1999.....	1.18	0.32	0.48	1.97	8
1998.....	1.17	0.30	0.47	1.95	8
1997.....	1.11	0.29	0.48	1.88	8
1996.....	1.12	0.30	0.49	1.91	8
1995.....	1.15	0.29	0.50	1.94	8
1994.....	1.20	0.27	0.51	1.99	8
1993.....	1.24	0.27	0.54	2.05	8
1992.....	1.25	0.28	0.57	2.10	7
1991.....	1.20	0.28	0.58	2.06	8
1990.....	1.25	0.30	0.62	2.18	8
1989.....	1.23	0.31	0.65	2.18	7
1988.....	1.31	0.25	0.67	2.24	7
1987.....	1.39	0.25	0.70	2.35	7
1986.....	1.52	0.27	0.73	2.52	6
1985.....	1.45	0.30	0.79	2.54	6
1984.....	1.46	0.29	0.80	2.55	6

Decile values (1 = highest) apply only to State-level data. Numbers may not sum because of rounding.

**Table 4.** Per capita ethanol consumption for States, census regions, and the United States, 1977–2022. (Gallons of ethanol, based on population ages 14 and older.) (Continued)

State or other geographic area	Per capita consumption				U.S. decile for all beverages
	Beer	Wine	Spirits	All beverages	
1983.....	1.47	0.27	0.82	2.56	6
1982.....	1.46	0.27	0.86	2.59	6
1981.....	1.23	0.27	0.89	2.39	7
1980.....	1.23	0.25	0.90	2.38	8
1979.....	1.21	0.25	0.90	2.36	8
1978.....	1.20	0.21	0.89	2.30	8
1977.....	1.17	0.21	0.89	2.27	7
Washington					
2022.....	0.84	0.49	0.89	2.23	8
2021.....	0.88	0.51	0.89	2.28	7
2020.....	0.88	0.50	0.86	2.25	8
2019.....	0.89	0.51	0.82	2.22	7
2018.....	0.91	0.51	0.81	2.23	7
2017.....	0.93	0.52	0.79	2.24	6
2016.....	0.96	0.52	0.77	2.25	7
2015.....	0.97	0.53	0.77	2.26	6
2014.....	0.97	0.52	0.76	2.25	7
2013.....	0.95	0.53	0.76	2.24	7
2012.....	0.96	0.53	0.76	2.25	7
2011.....	0.97	0.53	0.75	2.25	7
2010.....	1.01	0.52	0.73	2.25	6
2009.....	1.10	0.51	0.74	2.34	5
2008.....	1.11	0.50	0.75	2.37	5
2007.....	1.14	0.50	0.74	2.38	6
2006.....	1.08	0.48	0.72	2.28	6
2005.....	1.11	0.55	0.68	2.34	5
2004.....	1.11	0.53	0.66	2.30	5
2003.....	1.07	0.47	0.68	2.21	6
2002.....	1.09	0.43	0.66	2.17	6
2001.....	1.09	0.40	0.65	2.15	6
2000.....	1.11	0.41	0.66	2.18	6
1999.....	1.11	0.40	0.63	2.14	7
1998.....	1.12	0.39	0.63	2.14	7
1997.....	1.09	0.42	0.63	2.15	6
1996.....	1.09	0.40	0.63	2.12	6
1995.....	1.17	0.40	0.63	2.20	6
1994.....	1.18	0.39	0.65	2.23	6
1993.....	1.19	0.39	0.69	2.27	5
1992.....	1.26	0.46	0.72	2.44	4
1991.....	1.23	0.43	0.73	2.39	5
1990.....	1.27	0.46	0.76	2.49	5
1989.....	1.25	0.47	0.76	2.47	5
1988.....	1.23	0.50	0.77	2.51	6
1987.....	1.24	0.56	0.79	2.59	5
1986.....	1.23	0.61	0.82	2.66	5
1985.....	1.21	0.59	0.87	2.67	5
1984.....	1.23	0.57	0.91	2.70	5
1983.....	1.29	0.54	0.94	2.76	5
1982.....	1.32	0.52	0.98	2.83	5
1981.....	1.38	0.54	1.04	2.96	4
1980.....	1.51	0.51	1.08	3.10	4
1979.....	1.39	0.47	1.08	2.94	4
1978.....	1.36	0.47	1.07	2.91	4

Decile values (1 = highest) apply only to State-level data. Numbers may not sum because of rounding.

**Table 4.** Per capita ethanol consumption for States, census regions, and the United States, 1977–2022. (Gallons of ethanol, based on population ages 14 and older.) (Continued)

State or other geographic area	Per capita consumption				U.S. decile for all beverages
	Beer	Wine	Spirits	All beverages	
1977.....	1.34	0.45	1.06	2.85	4
West Virginia					
2022.....	1.10	0.11	0.57	1.77	10
2021.....	1.14	0.11	0.58	1.83	10
2020.....	1.14	0.11	0.56	1.81	10
2019.....	1.15	0.11	0.50	1.75	10
2018.....	1.15	0.11	0.47	1.74	10
2017.....	1.17	0.11	0.46	1.74	10
2016.....	1.19	0.11	0.46	1.76	10
2015.....	1.20	0.11	0.47	1.78	10
2014.....	1.21	0.10	0.47	1.78	10
2013.....	1.24	0.10	0.46	1.80	10
2012.....	1.24	0.10	0.47	1.80	10
2011.....	1.22	0.10	0.46	1.78	10
2010.....	1.23	0.10	0.44	1.78	10
2009.....	1.23	0.10	0.44	1.77	10
2008.....	1.25	0.10	0.43	1.79	10
2007.....	1.23	0.10	0.42	1.75	10
2006.....	1.21	0.10	0.41	1.72	10
2005.....	1.23	0.10	0.40	1.73	10
2004.....	1.25	0.10	0.39	1.75	10
2003.....	1.23	0.10	0.38	1.72	10
2002.....	1.26	0.10	0.38	1.74	10
2001.....	1.25	0.10	0.37	1.72	10
2000.....	1.24	0.10	0.36	1.70	10
1999.....	1.22	0.10	0.37	1.69	10
1998.....	1.18	0.09	0.36	1.64	10
1997.....	1.12	0.09	0.37	1.58	10
1996.....	1.12	0.09	0.37	1.58	10
1995.....	1.12	0.08	0.38	1.58	10
1994.....	1.17	0.08	0.39	1.64	10
1993.....	1.18	0.08	0.40	1.67	10
1992.....	1.16	0.09	0.41	1.66	10
1991.....	1.18	0.09	0.43	1.70	10
1990.....	1.20	0.10	0.42	1.72	10
1989.....	1.15	0.11	0.39	1.65	10
1988.....	1.15	0.12	0.41	1.68	10
1987.....	1.13	0.13	0.41	1.68	10
1986.....	1.12	0.13	0.42	1.67	10
1985.....	1.13	0.13	0.42	1.69	10
1984.....	1.13	0.12	0.45	1.70	10
1983.....	1.14	0.13	0.49	1.76	10
1982.....	1.11	0.14	0.55	1.80	10
1981.....	1.05	0.14	0.65	1.85	10
1980.....	1.00	0.09	0.72	1.81	10
1979.....	0.94	0.09	0.75	1.77	10
1978.....	0.93	0.09	0.76	1.78	10
1977.....	0.95	0.09	0.76	1.80	10
Wisconsin					
2022.....	1.19	0.39	1.59	3.17	2
2021.....	1.25	0.42	1.50	3.17	2

Decile values (1 = highest) apply only to State-level data. Numbers may not sum because of rounding.

**Table 4.** Per capita ethanol consumption for States, census regions, and the United States, 1977–2022. (Gallons of ethanol, based on population ages 14 and older.) (Continued)

State or other geographic area	Per capita consumption				U.S. decile for all beverages
	Beer	Wine	Spirits	All beverages	
2020.....	1.25	0.41	1.41	3.07	2
2019.....	1.27	0.39	1.29	2.95	2
2018.....	1.29	0.39	1.25	2.94	2
2017.....	1.33	0.40	1.26	2.99	2
2016.....	1.36	0.40	1.22	2.99	2
2015.....	1.39	0.39	1.20	2.98	2
2014.....	1.42	0.38	1.18	2.98	2
2013.....	1.45	0.38	1.17	3.00	2
2012.....	1.46	0.37	1.19	3.02	2
2011.....	1.46	0.37	1.16	2.99	2
2010.....	1.49	0.32	1.13	2.94	2
2009.....	1.49	0.31	1.16	2.96	2
2008.....	1.55	0.34	1.13	3.01	1
2007.....	1.56	0.33	1.11	3.00	1
2006.....	1.58	0.32	1.09	2.99	1
2005.....	1.58	0.31	1.07	2.95	1
2004.....	1.53	0.30	1.02	2.85	1
2003.....	1.53	0.29	1.00	2.82	2
2002.....	1.56	0.28	0.98	2.82	2
2001.....	1.54	0.26	0.95	2.75	2
2000.....	1.53	0.27	0.95	2.76	1
1999.....	1.53	0.26	0.92	2.72	2
1998.....	1.58	0.26	0.90	2.74	1
1997.....	1.57	0.25	0.89	2.71	1
1996.....	1.53	0.24	0.88	2.65	1
1995.....	1.64	0.23	0.87	2.73	1
1994.....	1.58	0.22	0.91	2.72	2
1993.....	1.59	0.22	0.89	2.71	1
1992.....	1.59	0.25	0.90	2.74	2
1991.....	1.65	0.27	0.84	2.76	1
1990.....	1.74	0.31	1.03	3.07	1
1989.....	1.72	0.31	0.96	2.99	1
1988.....	1.76	0.33	0.95	3.05	2
1987.....	1.80	0.36	0.98	3.14	2
1986.....	1.88	0.34	0.96	3.18	2
1985.....	1.83	0.32	1.06	3.20	1
1984.....	1.87	0.31	1.03	3.21	1
1983.....	1.94	0.34	1.07	3.35	2
1982.....	1.95	0.30	1.05	3.30	2
1981.....	1.96	0.32	1.21	3.48	1
1980.....	1.95	0.31	1.19	3.45	1
1979.....	1.92	0.28	1.19	3.39	2
1978.....	1.83	0.28	1.20	3.31	2
1977.....	1.81	0.27	1.28	3.37	1
Wyoming					
2022.....	1.20	0.29	1.44	2.93	3
2021.....	1.22	0.32	1.45	2.99	2
2020.....	1.21	0.33	1.42	2.97	2
2019.....	1.23	0.31	1.29	2.82	3
2018.....	1.21	0.32	1.24	2.77	3
2017.....	1.17	0.32	1.19	2.68	3

Decile values (1 = highest) apply only to State-level data. Numbers may not sum because of rounding.

**Table 4.** Per capita ethanol consumption for States, census regions, and the United States, 1977–2022. (Gallons of ethanol, based on population ages 14 and older.) (Continued)

State or other geographic area	Per capita consumption				U.S. decile for all beverages
	Beer	Wine	Spirits	All beverages	
2016.....	1.18	0.32	1.17	2.67	4
2015.....	1.25	0.31	1.18	2.74	3
2014.....	1.26	0.31	1.16	2.72	3
2013.....	1.24	0.29	1.13	2.67	3
2012.....	1.32	0.28	1.13	2.73	3
2011.....	1.29	0.27	1.10	2.66	3
2010.....	1.33	0.27	1.06	2.66	3
2009.....	1.40	0.27	1.06	2.73	2
2008.....	1.50	0.27	1.09	2.87	2
2007.....	1.46	0.27	1.07	2.80	2
2006.....	1.44	0.26	1.03	2.72	2
2005.....	1.20	0.25	0.96	2.41	5
2004.....	1.42	0.24	0.92	2.58	2
2003.....	1.70	0.23	0.90	2.84	1
2002.....	1.46	0.23	0.88	2.57	2
2001.....	1.44	0.22	0.88	2.53	2
2000.....	1.42	0.22	0.86	2.50	3
1999.....	1.41	0.22	0.84	2.47	2
1998.....	1.37	0.17	0.81	2.36	3
1997.....	1.42	0.17	0.81	2.40	3
1996.....	1.35	0.17	0.81	2.33	4
1995.....	1.34	0.16	0.80	2.29	4
1994.....	1.42	0.18	0.83	2.43	3
1993.....	1.40	0.19	0.86	2.45	3
1992.....	1.44	0.20	0.91	2.56	3
1991.....	1.45	0.20	0.90	2.56	3
1990.....	1.48	0.22	0.93	2.63	3
1989.....	1.41	0.23	0.86	2.50	5
1988.....	1.45	0.24	0.87	2.56	5
1987.....	1.51	0.25	0.90	2.66	5
1986.....	1.51	0.27	0.96	2.73	4
1985.....	1.59	0.25	1.05	2.89	3
1984.....	1.61	0.23	1.06	2.89	4
1983.....	1.68	0.22	1.11	3.01	4
1982.....	1.78	0.24	1.20	3.22	3
1981.....	1.91	0.24	1.27	3.43	2
1980.....	1.85	0.24	1.32	3.41	2
1979.....	1.86	0.22	1.30	3.39	2
1978.....	1.81	0.22	1.35	3.38	2
1977.....	1.78	0.20	1.31	3.29	2
Northeast region					
2022.....	0.96	0.46	1.10	2.51	
2021.....	1.00	0.49	1.04	2.53	
2020.....	0.96	0.49	0.95	2.41	
2019.....	1.00	0.52	0.92	2.44	
2018.....	1.00	0.51	0.90	2.42	
2017.....	1.01	0.53	0.88	2.42	
2016.....	1.03	0.52	0.87	2.42	
2015.....	1.04	0.51	0.85	2.40	
2014.....	1.03	0.53	0.84	2.40	
2013.....	1.06	0.52	0.83	2.40	
2012.....	1.06	0.51	0.82	2.39	

Decile values (1 = highest) apply only to State-level data. Numbers may not sum because of rounding.

**Table 4.** Per capita ethanol consumption for States, census regions, and the United States, 1977–2022. (Gallons of ethanol, based on population ages 14 and older.) (Continued)

State or other geographic area	Per capita consumption				U.S. decile for all beverages
	Beer	Wine	Spirits	All beverages	
2011.....	1.05	0.50	0.80	2.36	
2010.....	1.06	0.49	0.78	2.33	
2009.....	1.07	0.48	0.77	2.31	
2008.....	1.09	0.47	0.76	2.31	
2007.....	1.09	0.47	0.75	2.31	
2006.....	1.07	0.45	0.73	2.25	
2005.....	1.07	0.44	0.72	2.22	
2004.....	1.07	0.43	0.70	2.20	
2003.....	1.08	0.41	0.68	2.17	
2002.....	1.10	0.40	0.66	2.16	
2001.....	1.10	0.38	0.64	2.13	
2000.....	1.08	0.38	0.66	2.12	
1999.....	1.07	0.38	0.63	2.08	
1998.....	1.07	0.37	0.61	2.05	
1997.....	1.07	0.36	0.63	2.06	
1996.....	1.07	0.35	0.64	2.06	
1995.....	1.11	0.35	0.64	2.11	
1994.....	1.11	0.34	0.67	2.12	
1993.....	1.13	0.34	0.68	2.15	
1992.....	1.14	0.35	0.72	2.21	
1991.....	1.19	0.34	0.73	2.26	
1990.....	1.23	0.38	0.80	2.41	
1989.....	1.22	0.39	0.84	2.44	
1988.....	1.25	0.40	0.86	2.51	
1987.....	1.25	0.43	0.91	2.59	
1986.....	1.24	0.44	0.93	2.62	
1985.....	1.25	0.43	0.98	2.66	
1984.....	1.25	0.43	1.01	2.70	
1983.....	1.31	0.43	1.03	2.76	
1982.....	1.31	0.43	1.06	2.80	
1981.....	1.31	0.42	1.07	2.80	
1980.....	1.33	0.40	1.09	2.83	
1979.....	1.29	0.38	1.09	2.76	
1978.....	1.26	0.36	1.10	2.73	
1977.....	1.25	0.34	1.10	2.69	
Midwest region					
2022.....	1.04	0.36	1.06	2.47	
2021.....	1.09	0.37	1.06	2.52	
2020.....	1.08	0.37	1.01	2.46	
2019.....	1.09	0.36	0.94	2.39	
2018.....	1.10	0.36	0.91	2.37	
2017.....	1.12	0.36	0.89	2.38	
2016.....	1.14	0.35	0.87	2.37	
2015.....	1.15	0.35	0.86	2.36	
2014.....	1.16	0.34	0.84	2.35	
2013.....	1.17	0.34	0.83	2.34	
2012.....	1.20	0.33	0.82	2.35	
2011.....	1.20	0.32	0.79	2.31	
2010.....	1.23	0.30	0.77	2.30	
2009.....	1.25	0.30	0.76	2.32	
2008.....	1.27	0.29	0.76	2.33	

Decile values (1 = highest) apply only to State-level data. Numbers may not sum because of rounding.



**Table 4.** Per capita ethanol consumption for States, census regions, and the United States, 1977–2022. (Gallons of ethanol, based on population ages 14 and older.) (Continued)

State or other geographic area	Per capita consumption				U.S. decile for all beverages
	Beer	Wine	Spirits	All beverages	
2007.....	1.28	0.30	0.74	2.32	
2006.....	1.27	0.28	0.72	2.27	
2005.....	1.27	0.27	0.71	2.25	
2004.....	1.28	0.26	0.68	2.22	
2003.....	1.28	0.26	0.68	2.23	
2002.....	1.30	0.25	0.64	2.19	
2001.....	1.29	0.23	0.65	2.17	
2000.....	1.29	0.24	0.63	2.16	
1999.....	1.29	0.24	0.63	2.15	
1998.....	1.28	0.23	0.63	2.14	
1997.....	1.26	0.23	0.62	2.11	
1996.....	1.28	0.23	0.62	2.12	
1995.....	1.29	0.22	0.62	2.12	
1994.....	1.30	0.22	0.63	2.14	
1993.....	1.30	0.22	0.67	2.18	
1992.....	1.31	0.23	0.68	2.21	
1991.....	1.35	0.23	0.67	2.25	
1990.....	1.38	0.26	0.74	2.37	
1989.....	1.36	0.26	0.72	2.35	
1988.....	1.38	0.29	0.75	2.41	
1987.....	1.38	0.30	0.77	2.45	
1986.....	1.38	0.30	0.78	2.46	
1985.....	1.37	0.28	0.84	2.49	
1984.....	1.40	0.27	0.84	2.52	
1983.....	1.42	0.25	0.87	2.54	
1982.....	1.42	0.27	0.88	2.57	
1981.....	1.42	0.26	0.93	2.61	
1980.....	1.42	0.24	0.96	2.63	
1979.....	1.40	0.23	0.95	2.58	
1978.....	1.35	0.22	0.95	2.52	
1977.....	1.32	0.21	0.96	2.49	
South region					
2022.....	1.01	0.37	1.00	2.38	
2021.....	1.07	0.39	0.98	2.44	
2020.....	1.06	0.39	0.90	2.35	
2019.....	1.05	0.37	0.84	2.26	
2018.....	1.06	0.37	0.81	2.24	
2017.....	1.09	0.37	0.80	2.26	
2016.....	1.11	0.37	0.79	2.28	
2015.....	1.12	0.36	0.77	2.25	
2014.....	1.11	0.36	0.75	2.22	
2013.....	1.16	0.35	0.74	2.25	
2012.....	1.18	0.35	0.73	2.26	
2011.....	1.17	0.34	0.71	2.22	
2010.....	1.17	0.32	0.70	2.19	
2009.....	1.21	0.31	0.69	2.21	
2008.....	1.25	0.31	0.68	2.23	
2007.....	1.26	0.31	0.68	2.24	
2006.....	1.27	0.30	0.67	2.23	
2005.....	1.26	0.29	0.65	2.20	
2004.....	1.27	0.29	0.64	2.19	
2003.....	1.27	0.27	0.64	2.18	

Decile values (1 = highest) apply only to State-level data. Numbers may not sum because of rounding.

**Table 4.** Per capita ethanol consumption for States, census regions, and the United States, 1977–2022. (Gallons of ethanol, based on population ages 14 and older.) (Continued)

State or other geographic area	Per capita consumption				U.S. decile for all beverages
	Beer	Wine	Spirits	All beverages	
2002.....	1.28	0.26	0.62	2.16	
2001.....	1.29	0.25	0.60	2.14	
2000.....	1.30	0.25	0.61	2.17	
1999.....	1.30	0.25	0.60	2.15	
1998.....	1.30	0.24	0.60	2.13	
1997.....	1.30	0.23	0.60	2.13	
1996.....	1.30	0.23	0.61	2.15	
1995.....	1.29	0.22	0.61	2.12	
1994.....	1.31	0.22	0.64	2.16	
1993.....	1.33	0.22	0.66	2.20	
1992.....	1.33	0.23	0.69	2.26	
1991.....	1.31	0.23	0.69	2.23	
1990.....	1.36	0.26	0.74	2.36	
1989.....	1.33	0.26	0.74	2.33	
1988.....	1.34	0.27	0.74	2.35	
1987.....	1.34	0.27	0.77	2.39	
1986.....	1.36	0.28	0.79	2.43	
1985.....	1.34	0.27	0.86	2.47	
1984.....	1.34	0.27	0.90	2.51	
1983.....	1.36	0.25	0.91	2.52	
1982.....	1.37	0.23	0.94	2.54	
1981.....	1.36	0.24	0.98	2.58	
1980.....	1.30	0.23	0.97	2.50	
1979.....	1.27	0.20	0.99	2.46	
1978.....	1.25	0.19	1.00	2.44	
1977.....	1.21	0.19	0.98	2.37	
West region					
2022.....	1.06	0.53	1.12	2.71	
2021.....	1.08	0.55	1.07	2.70	
2020.....	1.05	0.53	0.98	2.56	
2019.....	1.06	0.53	0.92	2.51	
2018.....	1.05	0.54	0.91	2.50	
2017.....	1.02	0.52	0.85	2.39	
2016.....	1.03	0.53	0.85	2.41	
2015.....	1.05	0.50	0.82	2.37	
2014.....	1.06	0.53	0.80	2.40	
2013.....	1.05	0.54	0.81	2.40	
2012.....	1.05	0.55	0.81	2.42	
2011.....	1.04	0.53	0.78	2.35	
2010.....	1.07	0.47	0.76	2.30	
2009.....	1.11	0.50	0.76	2.37	
2008.....	1.15	0.50	0.76	2.41	
2007.....	1.17	0.49	0.76	2.41	
2006.....	1.13	0.50	0.76	2.39	
2005.....	1.14	0.49	0.73	2.35	
2004.....	1.17	0.47	0.71	2.34	
2003.....	1.17	0.45	0.69	2.31	
2002.....	1.18	0.44	0.68	2.30	
2001.....	1.19	0.43	0.68	2.30	
2000.....	1.21	0.43	0.68	2.31	
1999.....	1.20	0.43	0.65	2.28	

Decile values (1 = highest) apply only to State-level data. Numbers may not sum because of rounding.

**Table 4.** Per capita ethanol consumption for States, census regions, and the United States, 1977–2022. (Gallons of ethanol, based on population ages 14 and older.) (Continued)

State or other geographic area	Per capita consumption				U.S. decile for all beverages
	Beer	Wine	Spirits	All beverages	
1998.....	1.19	0.43	0.64	2.26	
1997.....	1.20	0.44	0.65	2.30	
1996.....	1.22	0.43	0.67	2.32	
1995.....	1.23	0.40	0.66	2.29	
1994.....	1.20	0.41	0.70	2.31	
1993.....	1.26	0.42	0.72	2.39	
1992.....	1.33	0.45	0.76	2.54	
1991.....	1.30	0.44	0.76	2.50	
1990.....	1.37	0.50	0.84	2.71	
1989.....	1.35	0.51	0.84	2.69	
1988.....	1.36	0.56	0.86	2.79	
1987.....	1.38	0.62	0.89	2.89	
1986.....	1.39	0.65	0.92	2.96	
1985.....	1.37	0.65	0.99	3.01	
1984.....	1.40	0.61	1.03	3.04	
1983.....	1.42	0.61	1.07	3.10	
1982.....	1.44	0.59	1.10	3.13	
1981.....	1.49	0.60	1.16	3.24	
1980.....	1.47	0.59	1.19	3.24	
1979.....	1.45	0.56	1.20	3.22	
1978.....	1.39	0.55	1.23	3.18	
1977.....	1.35	0.53	1.20	3.08	
U.S. total					
2022.....	1.02	0.42	1.06	2.50	
2021.....	1.06	0.44	1.03	2.53	
2020.....	1.05	0.44	0.95	2.43	
2019.....	1.05	0.43	0.89	2.38	
2018.....	1.06	0.43	0.87	2.36	
2017.....	1.06	0.43	0.85	2.35	
2016.....	1.09	0.43	0.83	2.35	
2015.....	1.09	0.42	0.81	2.33	
2014.....	1.10	0.43	0.80	2.32	
2013.....	1.12	0.42	0.79	2.33	
2012.....	1.13	0.42	0.78	2.34	
2011.....	1.12	0.41	0.76	2.29	
2010.....	1.14	0.38	0.74	2.26	
2009.....	1.17	0.38	0.73	2.29	
2008.....	1.20	0.38	0.73	2.31	
2007.....	1.21	0.38	0.72	2.31	
2006.....	1.20	0.37	0.71	2.28	
2005.....	1.20	0.36	0.70	2.25	
2004.....	1.21	0.35	0.68	2.23	
2003.....	1.21	0.34	0.67	2.22	
2002.....	1.23	0.32	0.64	2.20	
2001.....	1.23	0.31	0.64	2.18	
2000.....	1.23	0.31	0.64	2.19	
1999.....	1.23	0.31	0.63	2.17	
1998.....	1.22	0.30	0.62	2.15	
1997.....	1.22	0.30	0.62	2.15	
1996.....	1.23	0.30	0.63	2.16	
1995.....	1.24	0.29	0.63	2.15	
1994.....	1.25	0.28	0.65	2.18	

Decile values (1 = highest) apply only to State-level data. Numbers may not sum because of rounding.

**Table 4.** Per capita ethanol consumption for States, census regions, and the United States, 1977–2022. (Gallons of ethanol, based on population ages 14 and older.) (Continued)

State or other geographic area	Per capita consumption				U.S. decile for all beverages
	Beer	Wine	Spirits	All beverages	
1993.....	1.26	0.28	0.68	2.23	
1992.....	1.29	0.30	0.71	2.30	
1991.....	1.29	0.30	0.71	2.30	
1990.....	1.34	0.33	0.77	2.45	
1989.....	1.32	0.34	0.78	2.43	
1988.....	1.33	0.36	0.79	2.49	
1987.....	1.34	0.38	0.83	2.55	
1986.....	1.35	0.39	0.84	2.58	
1985.....	1.33	0.38	0.91	2.62	
1984.....	1.35	0.37	0.94	2.65	
1983.....	1.37	0.36	0.96	2.69	
1982.....	1.38	0.36	0.98	2.72	
1981.....	1.39	0.35	1.02	2.76	
1980.....	1.37	0.34	1.04	2.75	
1979.....	1.34	0.31	1.04	2.70	
1978.....	1.30	0.30	1.05	2.66	
1977.....	1.27	0.29	1.04	2.60	

Decile values (1 = highest) apply only to State-level data. Numbers may not sum because of rounding.