

An Overview of the U.S. Department of Education's 2020-21 Civil Rights Data Collection

2020-21 Civil Rights Data Collection (CRDC)



U.S. Department of Education
Office for Civil Rights

About the Civil Rights Data Collection

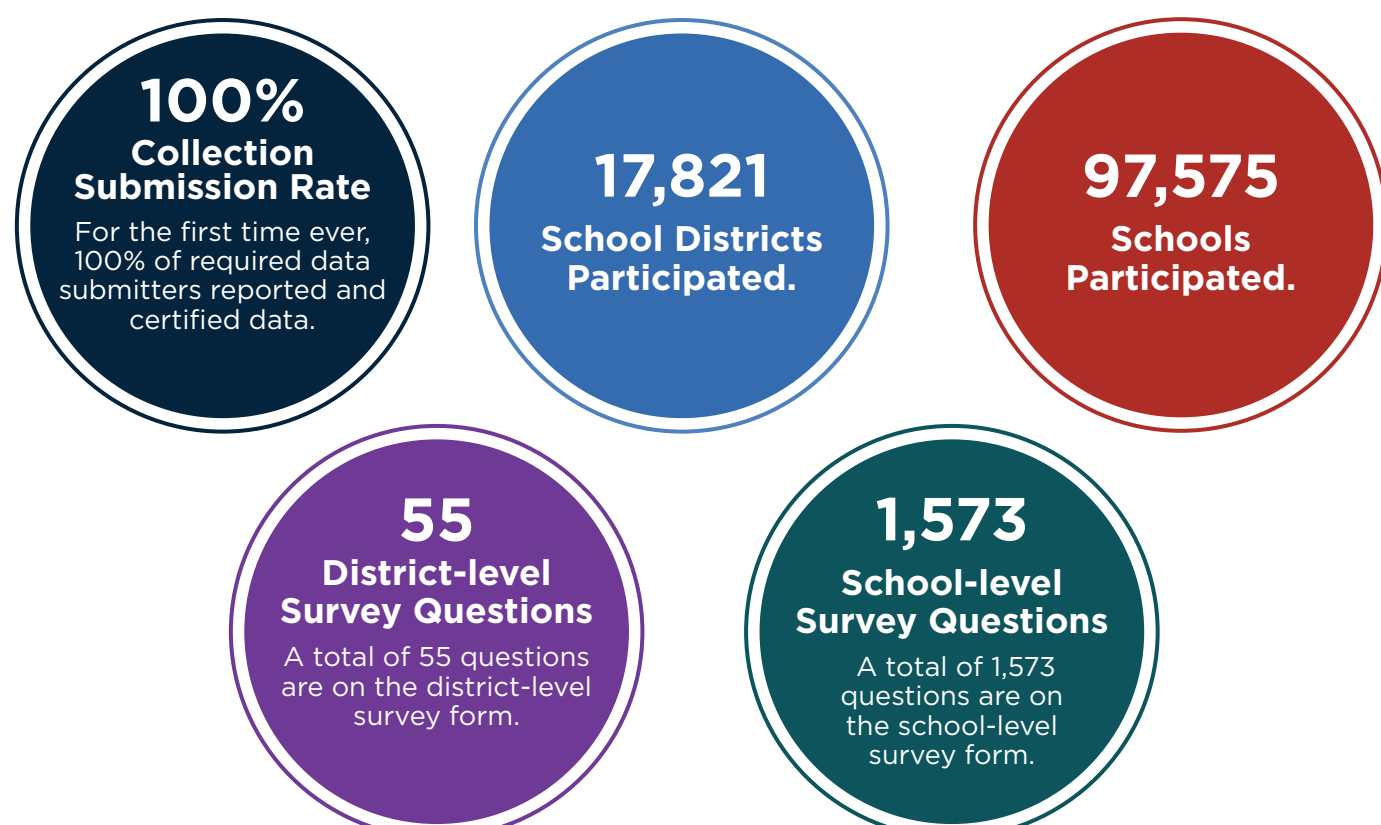
The U.S. Department of Education's (ED) Office for Civil Rights (OCR) administers the Civil Rights Data Collection (CRDC), which is a mandatory survey of all public schools and school districts in the 50 states, Washington, D.C., and the Commonwealth of Puerto Rico. The CRDC gathers information about student access to educational programs, activities, and staff, and school climate factors, such as student discipline and harassment or bullying incidents, from public schools serving students in preschool through 12th grade. For the 2020-21 school year, the CRDC includes data from more than 17,000 school districts and 97,000 schools nationwide. For more information about the CRDC or to download the full CRDC public-use data file, please visit <https://civilrightsdata.ed.gov.htsdata>.

2020-21 CRDC Overview

School districts and other data submitters reported data on various topics for the 2020-21 school year, including:¹

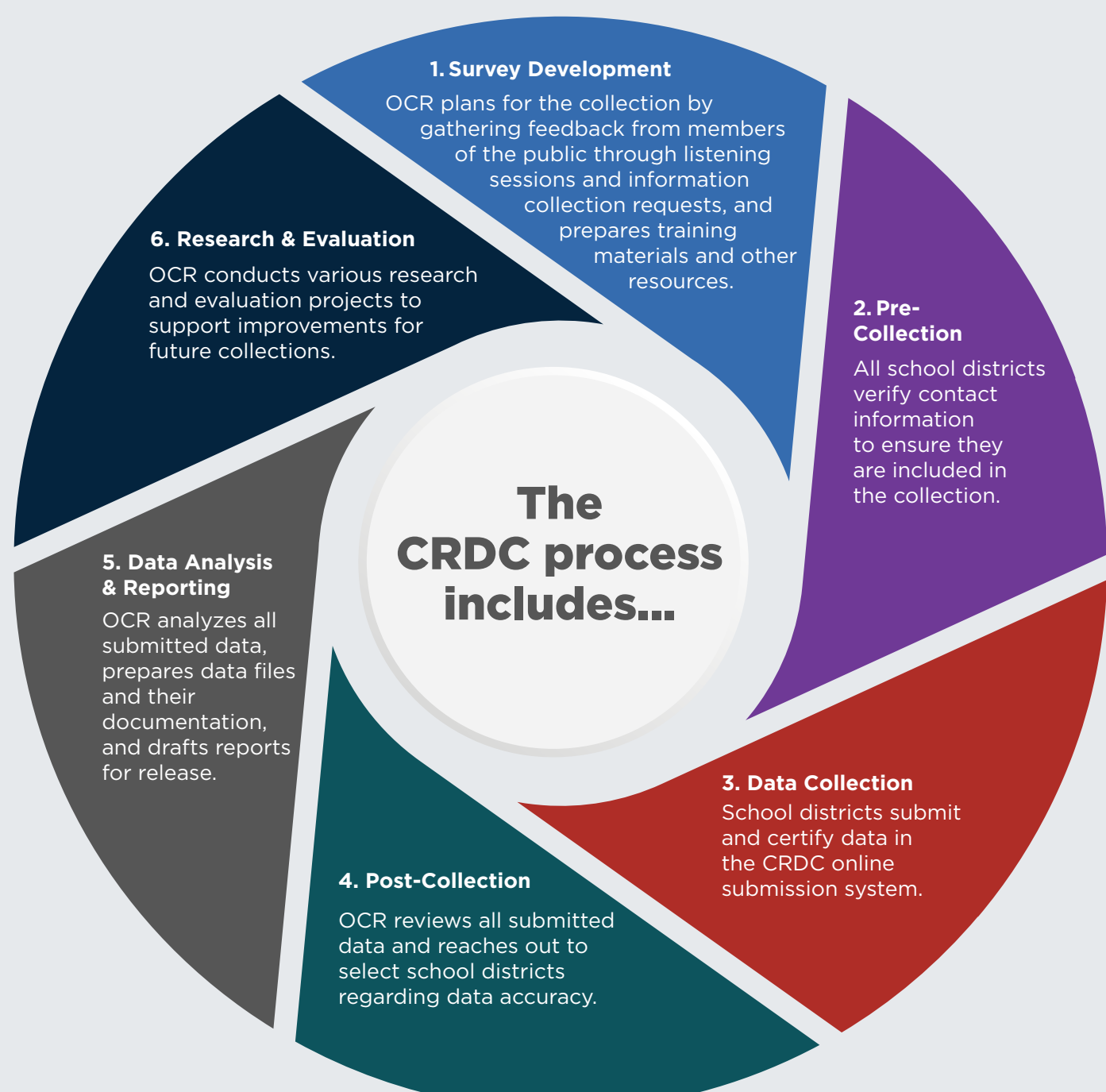
Enrollment & Student Characteristics	School Climate	Courses & School Programs
<ul style="list-style-type: none"> Overall Student Enrollment Preschool Enrollment IDEA & Section 504 Enrollment² English Learner Student Enrollment Student Retention 	<ul style="list-style-type: none"> Student Discipline Harassment or Bullying School Offenses School-related Arrests Referrals to Law Enforcement Restraint & Seclusion 	<ul style="list-style-type: none"> Science & Math Course Access and Passing Gifted & Talented Programs Dual Enrollment/Credit Programs English Language Instruction Educational Programs High School Equivalency Exam Preparation Programs Advanced Placement Courses & International Baccalaureate Programs SAT & ACT Test-taking Single-Sex Academic Classes Single-Sex Interscholastic Athletics
Teachers & School Support Staff	School & School District Characteristics	
<ul style="list-style-type: none"> Full-Time Equivalent Teachers Teacher Certification School Support Staff School Security Staff 	<ul style="list-style-type: none"> Distance Education Enrollment Desegregation Plans Civil Rights Coordinators Justice Facilities 	
	Internet Access & Devices	
	<ul style="list-style-type: none"> Internet Connection Wi-Fi Enabled Devices 	

2020-21 CRDC Counts



2020-21 CRDC Process

The 2020-21 CRDC submission system opened to data submitters on December 13, 2021 and closed on April 8, 2022.



For an analysis of national civil rights data submitted by schools and school districts for the 2020-21 CRDC, please see *A First Look: Students' Access to Educational Opportunities in the Nation's Public Schools*, available at <https://civilrightsdata.ed.gov>.

¹The CRDC is a district-level collection. Some states submit some or all data on behalf of their school districts, but school districts are required to certify the data. There is one exception: Florida is the only state that certifies data for all of its school districts.

²IDEA enrollment refers to students with disabilities who receive special education and related services under the Individuals with Disabilities Education Act. Section 504 enrollment refers to students with disabilities who receive educational aids and services under Section 504 of the Rehabilitation Act of 1973.

SOURCE: U.S. Department of Education, Office for Civil Rights, 2020-21 Civil Rights Data Collection, released November 2023, available at <https://civilrightsdata.ed.gov>.

! OCR cautions readers and data users to consider the impact of the coronavirus pandemic on students and on educational conditions when comparing the 2020-21 CRDC to CRDCs from previous years.

🖱 For more information on the 2020-21 CRDC data quality efforts, review the User's Manual available at <https://civilrightsdata.ed.gov>.

🌐 If you have difficulty understanding English, then you may ask OCR to provide language access services or resources, which may include oral technical assistance or written translation of a publicly available OCR document, free of charge, by contacting OCR at OCR@ed.gov.

📄 For requests for documents in alternate formats, such as Braille or large print, please contact the U.S. Department of Education at (202) 260-0852 or om_eeos@ed.gov.