

Discipline Practices in Preschool

2017-18 Civil Rights Data Collection (CRDC)



Office for Civil Rights

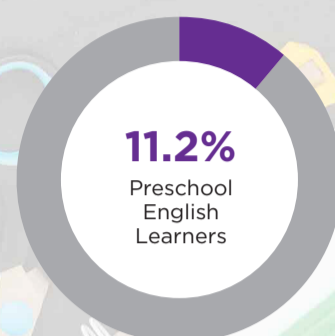
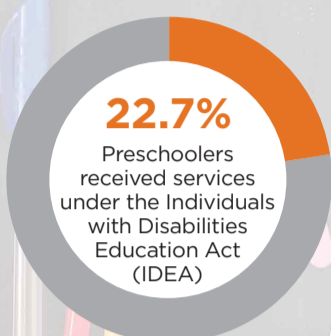
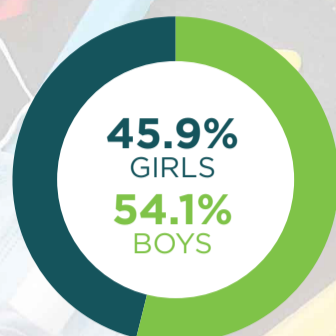
The Civil Rights Data Collection gathers and publishes key information about student access to educational opportunities and school climate from nearly every public school (pre-K through 12th grade) in all 50 states, D.C., and Puerto Rico.

All students deserve access to safe, supportive schools and classrooms. Discrimination and use of exclusionary discipline can negatively impact students' abilities to learn, grow and thrive.

SECRETARY OF EDUCATION MIGUEL CARDONA

2017-18 ENROLLMENT OVERVIEW

CRDC data showed **1.5 million** students enrolled in preschool.



DISPARITIES IN SUSPENSIONS

2,822 PRESCHOOLERS RECEIVED 1+ OUT-OF-SCHOOL SUSPENSIONS

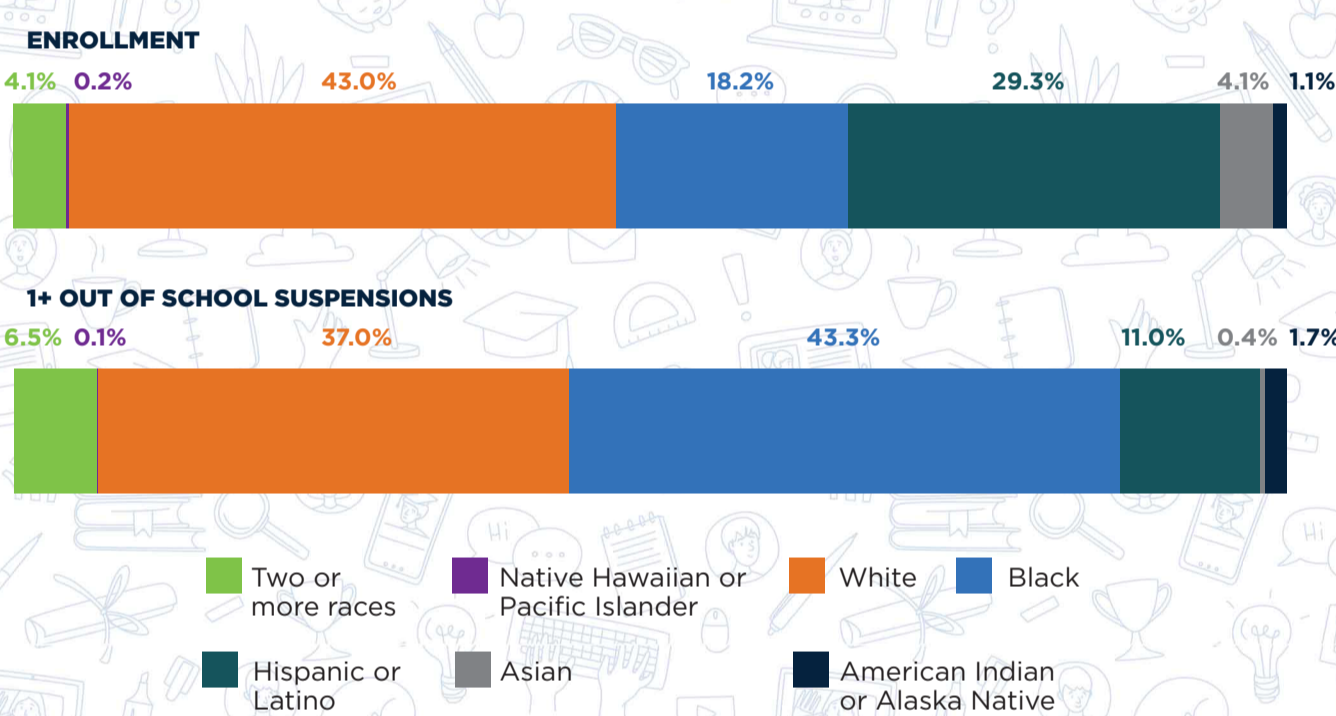
Disparities in suspensions were observed among preschool students.



BLACK PRESCHOOLERS RECEIVED ONE OR MORE SUSPENSIONS 2.5 TIMES GREATER THAN THEIR SHARE OF TOTAL PRESCHOOL POPULATION.



AMERICAN INDIAN AND ALASKA NATIVE AND MULTIRACIAL PRESCHOOLERS RECEIVED ONE OR MORE SUSPENSIONS 1.5 TIMES GREATER THAN THEIR SHARE OF TOTAL PRESCHOOL POPULATION.



Among girls, **Black preschool girls** was the only group where a disparity was observed. Black preschool girls accounted for 8.6% of total preschool enrollment but received 9.1% of one or more out-of-school suspensions.

DISPARITIES IN EXPULSIONS

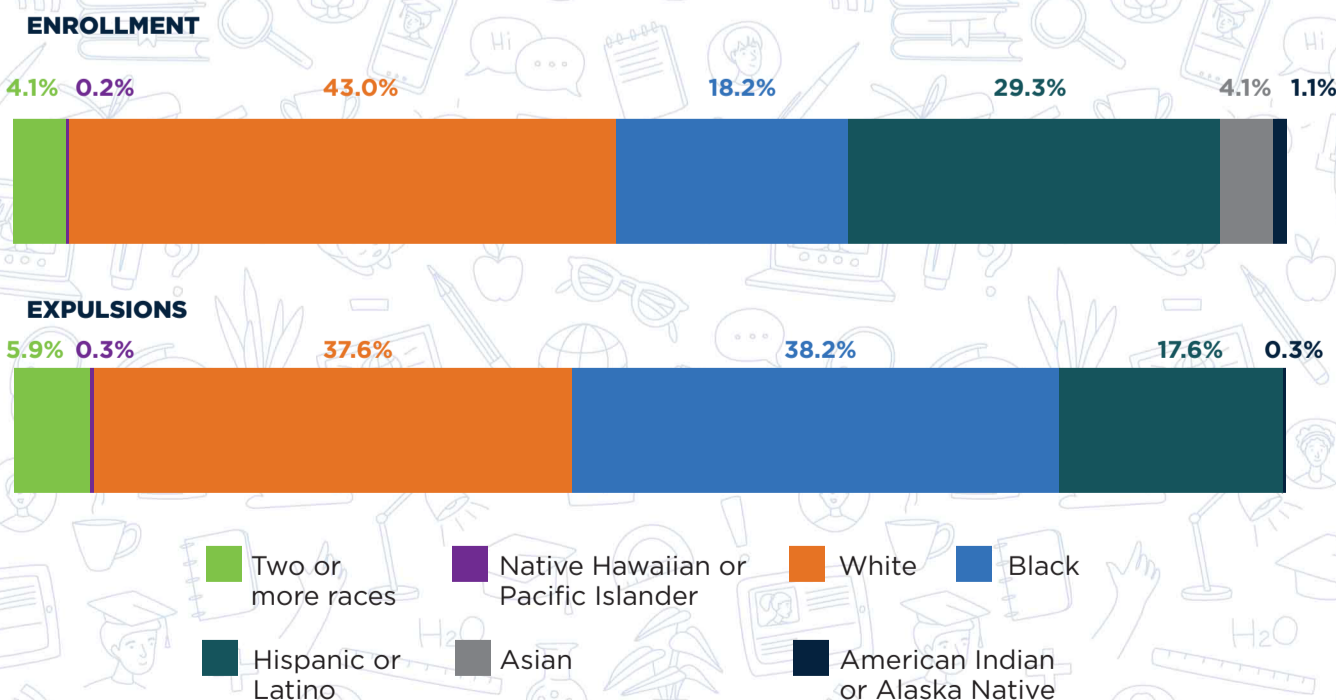
Despite their age, **306 preschoolers** were expelled in 2017-18. Black students and students served under IDEA were disproportionately expelled.



BLACK PRESCHOOLERS WERE EXPELLED 2 TIMES GREATER THAN THEIR SHARE OF TOTAL PRESCHOOL ENROLLMENT.



PRESCHOOLERS SERVED UNDER IDEA WERE EXPELLED 2.5 TIMES GREATER THAN THEIR SHARE OF TOTAL PRESCHOOL POPULATION.



More information is available in the Civil Rights Data Collection's 2017-18 State and National Estimations, online at <https://ocrdata.ed.gov/estimations/2017-2018>.