



# MMWR™

## Morbidity and Mortality Weekly Report

[www.cdc.gov/mmwr](http://www.cdc.gov/mmwr)

Weekly

September 11, 2009 / Vol. 58 / No. 35

### Oseltamivir-Resistant 2009 Pandemic Influenza A (H1N1) Virus Infection in Two Summer Campers Receiving Prophylaxis – North Carolina, 2009

Initial testing of the 2009 pandemic influenza A (H1N1) virus found it susceptible to neuraminidase inhibitors (oseltamivir and zanamivir) and resistant to adamantanes (amantadine and rimantadine) (1). Neuraminidase inhibitors have been used widely for treatment and chemoprophylaxis of 2009 pandemic influenza A (H1N1); however, sporadic cases of oseltamivir-resistant 2009 pandemic influenza A (H1N1) virus infection have been reported worldwide (2), including nine U.S. cases identified as of September 4.\* On July 14, CDC was contacted by a physician at a summer camp in North Carolina regarding two cases of influenza-like illness (ILI) in adolescent girls receiving oseltamivir chemoprophylaxis during an ILI outbreak that had begun June 18. The two girls stayed in the same cabin, and both received oseltamivir during a mass chemoprophylaxis program in which approximately 600 campers and staff members received oseltamivir or zanamivir. On July 20 and July 22, the North Carolina State Laboratory of Public Health confirmed pandemic H1N1 virus infection in respiratory specimens from both girls. On August 14 and August 19, CDC detected the H275Y mutation (N1 numbering) in neuraminidase from both specimens by pyrosequencing (3,4). The H275Y mutation is associated with resistance to oseltamivir; zanamivir susceptibility is retained. A second mutation (I223V) in neuraminidase also was detected in both specimens. This is the first report of oseltamivir resistance in pandemic H1N1 cases with an epidemiologic link. Health-care providers should be aware that antiviral resistance can develop during chemoprophylaxis or treatment with subtherapeutic dosages and should follow published recommendations for antiviral medications (5).

\* Additional information available at <http://www.cdc.gov/flu/weekly/fluactivity.htm>.

The summer camp offered two 4-week sessions. The first session was conducted from June 14 to July 10, followed by a weekend break, July 11–12, before the start of the second session on July 13. Approximately 650 campers and 350 staff members participated in the first session, and 350 campers and 300 staff members participated in the second session. An outbreak of ILI began on June 18, soon after the start of the first session; the last case was diagnosed on July 22. All ill persons were grouped in isolation until 7 days after symptom onset and until well. All but one of the 61 ill campers and four ill staff members received treatment with either oseltamivir or zanamivir. Also, beginning on June 18, medical staff members conducted a mass program of antiviral chemoprophylaxis in which prophylactic oseltamivir or zanamivir was administered to all persons who had an ill sibling at the camp and to all persons who lived in a cabin with an ill person. Chemoprophylaxis was administered daily by camp staff members to ensure compliance. Over the two sessions, a total of 418 campers and 189 staff members received 10 days of chemoprophylaxis with either oseltamivir (75 mg or appropriate weight-based dosing, once daily) or zanamivir (two 5 mg inhalations, once daily). The camp medical staff continued the program until July 24.

#### INSIDE

- 972 Receipt of Influenza Vaccine During Pregnancy Among Women With Live Births – Georgia and Rhode Island, 2004–2007
- 975 National Laboratory Inventories for Wild Poliovirus Containment – Western Pacific Region, 2008
- 978 Notice to Readers

The *MMWR* series of publications is published by the Coordinating Center for Health Information and Service, Centers for Disease Control and Prevention (CDC), U.S. Department of Health and Human Services, Atlanta, GA 30333.

**Suggested Citation:** Centers for Disease Control and Prevention. [Article title]. *MMWR* 2009;58:[inclusive page numbers].

### Centers for Disease Control and Prevention

Thomas R. Frieden, MD, MPH

*Director*

Tanja Popovic, MD, PhD

*Chief Science Officer*

James W. Stephens, PhD

*Associate Director for Science*

Steven L. Solomon, MD

*Director, Coordinating Center for Health Information and Service*

Jay M. Bernhardt, PhD, MPH

*Director, National Center for Health Marketing*

Katherine L. Daniel, PhD

*Deputy Director, National Center for Health Marketing*

### Editorial and Production Staff

Frederic E. Shaw, MD, JD

*Editor, MMWR Series*

Christine G. Casey, MD

*Deputy Editor, MMWR Series*

Robert A. Gunn, MD, MPH

*Associate Editor, MMWR Series*

Teresa F. Rutledge

*Managing Editor, MMWR Series*

Douglas W. Weatherwax

*Lead Technical Writer-Editor*

Donald G. Meadows, MA

Jude C. Rutledge

*Writers-Editors*

Martha F. Boyd

*Lead Visual Information Specialist*

Malbea A. LaPete

Stephen R. Spriggs

Terraye M. Starr

*Visual Information Specialists*

Kim L. Bright

Quang M. Doan, MBA

Phyllis H. King

*Information Technology Specialists*

### Editorial Board

William L. Roper, MD, MPH, Chapel Hill, NC, Chairman

Virginia A. Caine, MD, Indianapolis, IN

Jonathan E. Fielding, MD, MPH, MBA, Los Angeles, CA

David W. Fleming, MD, Seattle, WA

William E. Halperin, MD, DrPH, MPH, Newark, NJ

King K. Holmes, MD, PhD, Seattle, WA

Deborah Holtzman, PhD, Atlanta, GA

John K. Iglehart, Bethesda, MD

Dennis G. Maki, MD, Madison, WI

Sue Mallonee, MPH, Oklahoma City, OK

Patricia Quinlisk, MD, MPH, Des Moines, IA

Patrick L. Remington, MD, MPH, Madison, WI

Barbara K. Rimer, DrPH, Chapel Hill, NC

John V. Rullan, MD, MPH, San Juan, PR

William Schaffner, MD, Nashville, TN

Anne Schuchat, MD, Atlanta, GA

Dixie E. Snider, MD, MPH, Atlanta, GA

John W. Ward, MD, Atlanta, GA

## Case Reports

**Patient A.** One of the campers, a previously healthy adolescent girl, received oseltamivir prophylaxis at an appropriate prophylactic dose of 75 mg daily during June 26–July 5, despite having no reported exposure to an ill person. After completing the initial course of oseltamivir on July 5, she was exposed to an ill cabin mate (patient C) and administered a second 10-day course of chemoprophylaxis at the same dosage beginning on July 7. On July 8, she experienced cough and headache without fever, and on July 9 she experienced chills, worsening headache, and loose stools. Despite these symptoms, her oseltamivir dose was not increased to a therapeutic treatment dose. On July 10, the last day of the first camp session, she traveled away from camp with three family members while ill, returning on July 12, afebrile and with a cough, to attend the second session. On July 12, a rapid influenza detection test was positive for influenza A. The family declined treatment with zanamivir because of concern over side effects, and the patient's oseltamivir dose was doubled to 75 mg, twice daily, an appropriate therapeutic treatment dose. Patient A was isolated with other ill campers and staff members until July 16, and she recovered uneventfully. The camp physician observed that the camper became ill while taking prophylaxis and became concerned that antiviral resistance might have occurred. Therefore, a nasopharyngeal swab specimen was obtained on July 14 and sent to the state laboratory for testing. On July 22, the laboratory confirmed the presence of 2009 pandemic influenza A (H1N1) virus by real-time reverse transcription–polymerase chain reaction (rRT-PCR). On August 19, CDC testing of the same clinical specimen detected the H275Y (3,4) and I223V mutations (6). Because viral isolation was unsuccessful, a neuraminidase inhibition assay was not performed. No illness was reported among her family members.

**Patient B.** A second previously healthy adolescent girl, who resided in the same cabin as patient A, began oseltamivir chemoprophylaxis at a dose of 75 mg daily on July 7 after exposure to patient C. On July 10, patient B left camp for a home visit during the break between camp sessions. The next day, while at home, she experienced onset of fever (101.9°F [38.8°C]), sore throat, and cough. She continued to engage in normal activities while ill, including visiting a shopping mall and movie theater. She returned to camp for the second session on July 12 with fever, headache, cough, malaise, and myalgias. On July 12, a rapid influenza detection test was positive for influenza A. Oseltamivir was discontinued, and zanamivir treatment (two 5 mg inhalations, twice daily) was begun. A nasopharyngeal swab specimen was obtained July 14 and sent to the state laboratory for testing. On July 20, the presence of 2009 pandemic influenza A (H1N1) virus was

confirmed by rRT-PCR. On August 14, CDC testing of viral RNA detected H275Y and I223V mutations (3,4,6). Viral isolation was unsuccessful, and a neuraminidase inhibition assay was not performed. Patient B was isolated at the camp during July 12–18. Her fever resolved by July 14, and by July 17 she was asymptomatic. No illnesses were identified among close contacts potentially exposed during her weekend home visit.

## Further Transmission Investigation

After identification of the oseltamivir-resistant pandemic H1N1 virus, the state health department and local health departments interviewed the families of the two campers and reviewed camp medical records to determine whether the campers might have transmitted virus to others. Retrospective review of camp records revealed that, during June 26–July 22, six other campers were diagnosed with illness while on oseltamivir chemoprophylaxis (75 mg once daily for 10 days). A single specimen from one of these six campers (not patient C) was obtained July 14 and sent to the state laboratory for testing by rRT-PCR, but no influenza virus was isolated. No evidence of pandemic H1N1 virus infection outside the camp linked to either patient A or patient B was found. CDC tested by pyrosequencing 59 specimens of pandemic H1N1 virus, collected during June 29–August 14 as part of routine surveillance conducted by sentinel sites throughout North Carolina. None of the 59 specimens had the H275Y or I223V mutations.

**Reported by:** *M Garrison, Buncombe County Health Center; L Weldon, Henderson County Dept of Public Health; P Brantley, L Wolf, PhD, M Davies, MD, J-M Maillard, MD, Z Moore, MD, North Carolina Dept of Health and Human Svcs. T Sheu, V Deyde, PhD, L Gubareva, PhD, AM Fry, MD, Influenza Div, National Center for Immunization and Respiratory Diseases; A Fleischauer, PhD, Career Epidemiology Field Officer Program, Coordinating Office for Terrorism Preparedness and Emergency Response; NJ Dailey, MD, EIS Officer, CDC.*

**Editorial Note:** This report describes confirmed oseltamivir-resistant 2009 pandemic influenza A (H1N1) virus infection in two previously healthy adolescents who were cabin mates and recipients of oseltamivir in a mass chemoprophylaxis program during an outbreak of ILI at a summer camp. This is the first report of oseltamivir resistance in symptomatic close contacts with confirmed infection. Two possible mechanisms of transmission seem most likely. One possibility is that oseltamivir-resistant virus was transmitted from patient A to patient B. The onset of illness for patient B occurred 4 days after the onset of illness for patient A, consistent with reported intervals for secondary transmission among household members with seasonal influenza (7). Alternatively, both patient A and patient B might have acquired oseltamivir-resistant virus infection from exposure to another ill person (e.g., an unknown camper or staff member, or patient C), or each might have developed

oseltamivir resistance independently. Whether the H275Y and I223V mutations occurred independently, or whether virus with one or both of these mutations circulated more widely in the camp could not be determined.

Although six other persons had illness while receiving oseltamivir chemoprophylaxis, aside from the specimens collected from patients A and B, only one specimen was obtained from any other ill person, and the pandemic H1N1 virus was not detected in that specimen. Neither mutation was found in 59 surveillance specimens from sentinel sites in the state, suggesting that the mutations were not widespread in North Carolina. The H275Y mutation has been characterized previously among seasonal influenza A (H1N1) viruses and is associated with resistance to oseltamivir (3). The I223V mutation has not been reported previously in 2009 pandemic influenza A (H1N1); because the neuraminidase inhibition assay could not be performed, the mutation's functional significance is unknown.

These cases highlight a potentially adverse outcome from oseltamivir chemoprophylaxis. In two randomized clinical trials (with 962 and 812 participants, respectively), the efficacy of oseltamivir chemoprophylaxis for preventing clinical seasonal influenza among persons within households ranged from 68% (for laboratory-confirmed infection that included serologic outcomes of infection) to 89% (for laboratory-confirmed clinical influenza) (8,9). No evidence of oseltamivir-resistant virus was reported in these studies. However, the World Health Organization has reported multiple instances of oseltamivir-resistant 2009 pandemic influenza A (H1N1) viruses being isolated from persons who developed pandemic H1N1 infection while receiving oseltamivir chemoprophylaxis (2). Resistance to oseltamivir also might develop during subtherapeutic dosing. In this report, patient A was symptomatic while on a chemoprophylaxis dose of oseltamivir for 4 days. One possibility is that she developed resistance while on a subtherapeutic dosage of 75 mg once a day for chemoprophylaxis, rather than the appropriate treatment dose of 75 mg twice a day.

CDC recommendations regarding use of antivirals during the H1N1 pandemic were updated on September 8. Use of antiviral medications for postexposure chemoprophylaxis should be reserved for persons at higher risk for influenza-related complications who have had contact with someone likely to have been infected with influenza. An emphasis on early treatment once a patient has developed symptoms, rather than chemoprophylaxis, should reduce opportunities for development of oseltamivir resistance (5). Chemoprophylaxis should not be used for prevention of illness among healthy persons after exposures in community settings. Persons who are taking antiviral medications for prevention should be instructed to contact a health-care provider if illness develops. Persons under antiviral treatment should be instructed to contact a

health-care provider if symptoms worsen. Other preventative measures (e.g., hand hygiene and cough etiquette) can reduce the risk for influenza virus transmission (5).

Chemoprophylaxis failure is known to occur even without antiviral resistance (8,9). Accordingly, not all failures need to be accompanied by testing for resistance; testing should be considered for individual cases in consultation with the state health department. However, if symptoms develop during chemoprophylaxis, providers should consider the possibility of antiviral resistance and consider alternate treatment options. Because the 2009 pandemic influenza A (H1N1) virus is resistant to adamantanes (1), limited treatment options will be available if widespread oseltamivir resistance develops. Zanamivir is not licensed for treatment of children aged <7 years and is contraindicated among persons with underlying airway disease.

#### References

1. CDC. Drug susceptibility of swine-origin influenza A (H1N1) viruses, April 2009. *MMWR* 2009;58:433–5.
2. World Health Organization. Pandemic (H1N1) 2009: update 60. Geneva, Switzerland: World Health Organization; 2009. Available at [http://www.who.int/csr/don/2009\\_08\\_04/en/index.html](http://www.who.int/csr/don/2009_08_04/en/index.html).
3. Deyde VM, Gubareva LV. Influenza genome analysis using pyrosequencing method: current applications for a moving target. *Expert Rev Mol Diagn* 2009;9:493–509.
4. World Health Organization. Influenza A (H1N1) NA-H274 detailed pyrosequencing protocol for antiviral susceptibility testing. Geneva, Switzerland: World Health Organization; 2009. Available at [http://www.who.int/csr/resources/publications/swineflu/NA\\_DetailedPyrosequencing\\_20090513.pdf](http://www.who.int/csr/resources/publications/swineflu/NA_DetailedPyrosequencing_20090513.pdf).
5. CDC. Updated interim recommendations for the use of antiviral medications in the treatment and prevention of influenza for the 2009–2010 season. Atlanta, GA: CDC; September 8, 2009. Available at <http://www.cdc.gov/h1n1flu/recommendations.htm>.
6. Garten RJ, Davis CT, Russell CA, et al. Antigenic and genetic characteristics of swine-origin 2009 A(H1N1) influenza viruses circulating in humans. *Science* 2009;325:197–201.
7. Cowling BJ, Fang VJ, Riley S, Malik Peiris JS, Leung GM. Estimation of the serial interval of influenza. *Epidemiology* 2009;20:344–7.
8. Welliver R, Monto AS, Carewicz O, et al. Effectiveness of oseltamivir in preventing influenza in household contacts: a randomized controlled trial. *JAMA* 2001;285:748–54.
9. Hayden FG, Belshe R, Villanueva C, et al. Management of influenza in households: a prospective, randomized comparison of oseltamivir treatment with or without postexposure prophylaxis. *J Infect Dis* 2004;189:440–9.

## Receipt of Influenza Vaccine During Pregnancy Among Women With Live Births – Georgia and Rhode Island, 2004–2007

Pregnant women are at increased risk for complications from influenza (1–3). Since 2004, the Advisory Committee on Immunization Practices (ACIP) and American College of Obstetricians and Gynecologists (ACOG) Committee on Obstetric Practice have recommended that all pregnant women be vaccinated with the trivalent inactivated vaccine during any trimester of pregnancy (4,5). To assess the percentage of women who were vaccinated during pregnancy among women with recent live births, CDC analyzed data from the Pregnancy Risk Assessment and Monitoring System (PRAMS) from Georgia and Rhode Island, the two states that collected this information on the PRAMS survey. This report summarizes the results, which showed that in Georgia, the prevalence of influenza vaccination during the woman's most recent pregnancy increased from 10.4% in 2004 to 15.5% in 2006. In Rhode Island, vaccination prevalence increased from 21.9% in 2004 to 33.4% in 2007. During 2006 in Georgia, the most common reasons for not receiving vaccination were, "I don't normally get the flu vaccination" (69.4%), and "my physician did not mention anything about a flu vaccine during my pregnancy" (44.5%). Increased efforts are needed to assess vaccine coverage during pregnancy and to educate providers and pregnant women about ACIP and ACOG recommendations on providing intramuscular, inactivated influenza vaccine during any trimester of pregnancy.

PRAMS is a population-based surveillance system that collects data on a wide range of maternal behaviors and experiences before, during, and after pregnancy. PRAMS surveys currently are administered by 37 states, New York City, and one tribal-state partnership in South Dakota. Each month, participating states or entities use birth certificate data to select a stratified random sample of 100–300 women with recent live births. A questionnaire is mailed to the women 2–6 months after delivery. The participating entities use a standard questionnaire, to which they can add questions. From 2004 to 2007, Georgia and Rhode Island included questions about influenza vaccination on their surveys. Responses from Georgia for 3 years (2004–2006; N = 5,231) and Rhode Island for 4 years (2004–2007; N = 5,499) were analyzed. Variables included receipt of influenza vaccination in women during pregnancy, demographics, and health-care service use indicators. Response rates for the years of data examined for Georgia were 70.0% for 2004, 70.2% for 2005, and 70.8% for 2006; rates for



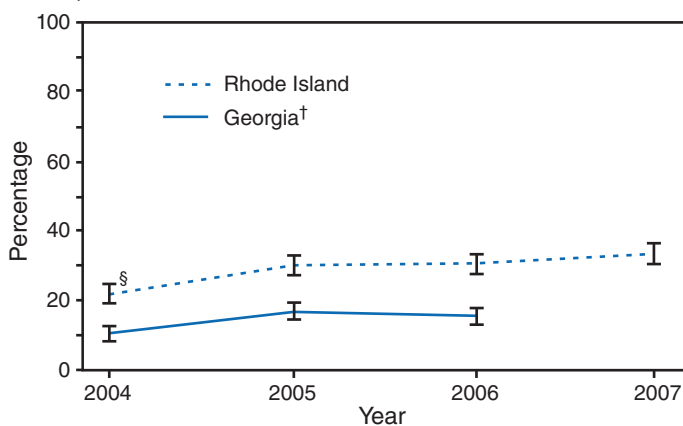
Rhode Island were 75.5% for 2004, 75.1% for 2005, 72.5% for 2006, and 72.1% for 2007.

Women whose influenza vaccination status was missing (229 for Georgia and 163 for Rhode Island) were excluded. PRAMS data were weighted to take into account complex survey design, nonresponse, and noncoverage for each state. Data were analyzed to estimate influenza vaccination prevalence and 95% confidence intervals. Chi-square tests were used to determine statistical significance and statistical software were used to account for the complex sampling strategy.

Surveys conducted by both states inquired about influenza vaccination coverage by asking the question, "Did you get a flu vaccination during your most recent pregnancy?" The Georgia survey included a follow-up question for women who reported not being vaccinated to assess their reasons. The question included was, "What were your reasons for not getting a flu vaccination during your most recent pregnancy?" A list of reasons with a choice of yes/no response included items on receipt of provider advice, perceptions of vaccine safety, and timing of pregnancy. The Rhode Island survey included a question on provider advice, "At any time during your pregnancy, did a doctor, nurse, or other health-care worker offer you a flu vaccination or tell you to get one?"

In both states, most of the increase in influenza vaccination coverage was observed from 2004 to 2005 (Figure); in Georgia, coverage increased 62.5%, from 10.4% to 16.9%, and in Rhode Island, coverage increased 37.4%, from 21.9% to 30.1%. Vaccination prevalence remained mostly stable during 2005–2006, but with a further 10.0% increase observed in Rhode Island from 2006 to 2007. Prevalence of influenza

**FIGURE. Influenza vaccination coverage during most recent pregnancy among women with recent live births\* — Pregnancy Risk Assessment and Monitoring System, Georgia and Rhode Island, 2004–2007**



\* Based on response to the question, "Did you get a flu vaccination during your most recent pregnancy?"

† 2007 data for Georgia were not available. Percentages are weighted.

§ 95% confidence interval.

vaccination during pregnancy in the two states varied by state and demographically (Table 1).

In Rhode Island, the prevalence of women who reported receiving advice about influenza vaccine or an offer of vaccination increased from 33.0% during 2004 to 47.7% during 2007 ( $p < 0.001$ ). In 2007, among respondents who reported receiving vaccination advice from a health-care provider, the prevalence of those who also were vaccinated was 65.7%. In 2007, Rhode Island data showed that among women who did not report receiving advice from their health-care provider about influenza vaccine, only 4.6% reported receiving influenza vaccination.

In Georgia, previous vaccination history, provider advice, perceptions of safety, and timing of pregnancy were among the reasons unvaccinated women cited for not getting the influenza vaccine (Table 2). The top reasons cited were "I don't normally

**TABLE 1. Influenza vaccination coverage during most recent pregnancy among women with recent live births, by selected characteristics — Pregnancy Risk Assessment Monitoring System, Georgia and Rhode Island, 2006 and 2007.**

| Characteristic                         | Georgia 2006<br>(n = 1,958*) |             | Rhode Island 2007<br>(n = 1,328*) |             |
|--|------------------------------|-------------|-----------------------------------|-------------|
|  | %†                           | (95% CI)§   | %                                 | (95% CI)    |
| <b>Total</b>                           | 15.5                         | (13.2–17.8) | 33.4                              | (30.4–36.4) |
| <b>Maternal race/ethnicity</b>         |                              |             |                                   |             |
| Black, non-Hispanic                    | 12.6                         | (10.0–15.2) | 29.8                              | (19.9–39.7) |
| White, non-Hispanic                    | 16.9                         | (13.3–20.6) | 30.4                              | (26.7–34.1) |
| Hispanic                               | 18.9                         | (10.8–27.0) | 42.5                              | (36.1–49.0) |
| Other                                  | 12.0                         | (0.1–23.9)¶ | 35.5                              | (23.0–48.0) |
| <b>Maternal age (yrs)</b>              |                              |             |                                   |             |
| <20                                    | 20.3                         | (12.9–27.7) | 29.2                              | (19.6–38.8) |
| 20–24                                  | 11.5                         | (7.8–15.4)  | 38.1                              | (31.2–45.0) |
| 25–29                                  | 12.4                         | (8.3–16.5)  | 31.0                              | (25.4–36.6) |
| 30–34                                  | 21.6                         | (15.9–27.3) | 34.0                              | (28.0–40.0) |
| ≥35                                    | 15.9                         | (9.2–22.6)  | 33.0                              | (26.0–40.0) |
| <b>Marital status</b>                  |                              |             |                                   |             |
| Married                                | 15.9                         | (12.8–19.1) | 35.3                              | (31.3–39.3) |
| Not married                            | 15.0                         | (11.5–18.6) | 30.7                              | (26.2–35.2) |
| <b>Maternal education</b>              |                              |             |                                   |             |
| <High school                           | 11.5                         | (5.4–17.6)  | 36.1                              | (28.4–43.8) |
| High school                            | 11.7                         | (8.1–15.4)  | 27.8                              | (22.5–33.1) |
| >High school                           | 17.2                         | (13.7–20.8) | 36.1                              | (31.9–40.4) |
| <b>Parity</b>                          |                              |             |                                   |             |
| 1                                      | 18.2                         | (14.3–22.1) | 29.3                              | (25.0–33.6) |
| 2                                      | 15.2                         | (11.1–19.3) | 36.1                              | (30.7–41.6) |
| ≥3                                     | 11.8                         | (7.8–15.8)  | 34.6                              | (28.1–41.1) |
| <b>Medicaid paid for prenatal care</b> |                              |             |                                   |             |
| Yes                                    | 12.3                         | (9.4–15.2)  | 39.9                              | (31.8–48.0) |
| No                                     | 18.5                         | (14.9–22.1) | 32.5                              | (29.3–35.8) |
| <b>Prenatal care initiation</b>        |                              |             |                                   |             |
| 1st trimester                          | 15.8                         | (13.1–18.5) | 33.6                              | (30.3–36.9) |
| After 1st trimester                    | 15.0                         | (9.8–20.2)  | 27.3                              | (19.6–35.0) |

\* Sample sizes are unweighted.

† Percentages are weighted.

§ Confidence interval.

¶ <60 respondents; estimates might not be stable.

**TABLE 2. Reasons given by women with recent live births for not receiving influenza vaccination among those who were not vaccinated (n = 1,648\*) — Pregnancy Risk Assessment Monitoring System, Georgia, 2006**

| Reason†   | %‡   | (95% CI¶)   |
|---|------|-------------|
| I don't normally get a flu vaccination  | 69.4 | (66.2–72.7) |
| My physician did not mention anything about a flu vaccine during my pregnancy | 44.5 | (40.9–48.0) |
| I was worried that the flu vaccination might harm my baby                     | 28.1 | (24.9–31.3) |
| I was worried about side effects of the flu vaccination for me                | 27.1 | (23.9–30.3) |
| I was in my first trimester during the flu season (November–February)         | 25.2 | (22.0–28.4) |
| I wasn't pregnant during the flu season (November–February)                   | 24.2 | (21.1–27.3) |
| Other reason  | 6.2  | (4.3–8.0)   |

\* Unweighted sample sizes.

† Respondents could select more than one reason.

‡ Percentages are weighted.

¶ Confidence interval.

get the flu vaccination" (69.4%) and "my physician did not mention anything about a flu vaccine during my pregnancy" (44.5%); 28.1% were worried about the safety of the influenza vaccine for their infant and 27.1% were worried about the safety for themselves.

**Reported by:** *IB Ahluwalia, PhD, L Harrison, MPH, D Jamieson, MD, Div of Reproductive Health, National Center on Chronic Disease Prevention and Health Promotion; SA Rasmussen, MD, Div of Birth Defects and Developmental Disabilities, National Center on Birth Defects and Developmental Disabilities, CDC.*

**Editorial Note:** Despite evidence that maternal vaccination with influenza vaccine protects infants from influenza-like illness during the first 6 months of life (6), recent national data show that pregnant women have the lowest rates of coverage among all adult populations recommended to receive influenza vaccination (7). During 2004–2007, influenza vaccination prevalence increased significantly in both states among women with recent live births. The increases in coverage partially could be related to changes in ACIP and ACOG recommendations in 2004, when the recommendation for pregnant women changed from vaccine administration to women who would be in their second or third trimester during influenza season to administration of vaccine any time during pregnancy (4,5). Also, increased media reporting about vaccination of high-risk populations during the 2004–2005 influenza vaccine shortage might have increased awareness among pregnant women and their providers, perhaps resulting in an increase in influenza vaccination prevalence (8).

Interventions focusing on providers and pregnant women might address barriers to influenza vaccination experienced by both (3,9). In July 2006, Rhode Island passed a law\* requiring the Rhode Island health department to purchase vaccine and distribute it to physicians who enroll in the Immunize for Life

adult immunization program.† By enacting specific legislation, Rhode Island increased vaccine availability for health-care providers and perhaps alerted providers and pregnant women about the importance of immunizing pregnant women with influenza vaccine. The Rhode Island experience with vaccine distribution might be a useful example for other states on the effectiveness of working with health-care providers to supply influenza vaccine for pregnant women.

Approximately 25% of women in Georgia cited being in their first trimester as a reason for not getting the influenza vaccine, identifying a need to educate pregnant women about the importance of getting the influenza vaccine, even during the earliest phases of pregnancy. These women and their physicians might not have been aware of current ACIP and ACOG recommendations that women who are pregnant during influenza season should be vaccinated, irrespective of trimester. Providers should be educated about these recommendations, about influenza risks for pregnant women, and about interventions to prevent severe illness in this population (3–5,9).

The findings in this report are subject to at least three limitations. First, PRAMS data on influenza vaccination were only available from two states, and these findings might not be generalizable to all women with live births in the United States. Second, PRAMS data are self-reported by women 2–4 months postpartum and therefore they might be subject to recall bias. Finally, information on provider recommendations was assessed by maternal report; data from health-care providers regarding their practice related to influenza vaccine might have shown different results.

Because the seasonal influenza vaccine is unlikely to provide protection against pandemic influenza A (H1N1) infection (10), ACIP recommends that pregnant women receive both vaccine formulations during the 2009–10 influenza season. The

\* Routine childhood and adult immunization vaccines. Title 23, Chapter 23-1, Sect. 23-1-44 (2006). Available at <http://www.rilin.state.ri.us/statutes/title23/23-1/23-1-44.htm>.

† Additional information available at <http://www.health.ri.gov/immunization/immunizeforlife.php>.

trivalent inactivated seasonal influenza vaccine is now available and the influenza A (H1N1) 2009 monovalent vaccine is expected to become available in mid-October (10).

### Acknowledgments

This report is based, in part, on contributions by H Kim, PhD, and R Cain, Rhode Island Dept of Health Center for Health Data and Analysis; C Hoban, PhD, and D Goodman, PhD, Georgia Dept of Community Health, Office of Epidemiology, Evaluation, and Health Information; A Harrison, Science Applications International Corporation Contractor; and S Gupta, MPH, Div of Reproductive Health, National Center for Chronic Disease Prevention and Health Promotion, CDC.

### References

1. Jamieson DJ, Theiler RN, Rasmussen SA. Emerging infections and pregnancy. *Emerg Infect Dis* 2006;12:1638–43.
2. Rasmussen SA, Jamieson DJ, Bresee JS. Pandemic influenza and pregnant women. *Emerg Infect Dis* 2008;14:95–100.
3. Naleway AL, Smith WJ, Mullooly JP. Delivering influenza vaccine to pregnant women. *Epidemiol Rev* 2006;28:47–53.
4. CDC. Prevention and control of influenza: recommendations of the Advisory Committee on Immunization Practices (ACIP), 2008. *MMWR* 2008;57(No. RR-7).
5. American College of Obstetricians and Gynecologists' Committee on Obstetric Practice. ACOG committee opinion number 305, November 2004. Influenza vaccination and treatment during pregnancy. *Obstet Gynecol* 2004;104:1125–6.
6. Zaman K, Roy E, Arifeen SE, Rahman M, et al. Effectiveness of maternal influenza immunization in mothers and infants. *N Engl J Med* 2008;359:1555–64.
7. Lu P, Bridges CB, Euler GL, Singleton JA. Influenza vaccination of recommended adult populations, U.S., 1989–2005. *Vaccine* 2008;26:1786–93.
8. Brewer NT, Hallman WK. Subjective and objective risk as predictors of influenza vaccination during the vaccine shortage of 2004–2005. *Clin Infect Dis* 2006;43:1379–86.
9. CDC. Influenza vaccination in pregnancy: practices among obstetrician-gynecologists—United States, 2003–04 influenza season. *MMWR* 2005;54:1050–2.
10. CDC. Use of influenza A (H1N1) 2009 monovalent vaccine: recommendations of the Advisory Committee on Immunization Practices (ACIP), 2009. *MMWR* 2009;58(No. RR-10).

## National Laboratory Inventories for Wild Poliovirus Containment — Western Pacific Region, 2008

In the future, when wild poliovirus (WPV) transmission is interrupted worldwide, facilities holding WPV materials will represent the only remaining repository of the virus. Maintaining the number of such facilities at a minimum and at an appropriate biosafety standard (laboratory containment) reduces the risk for a facility-associated reintroduction of WPV. In May 1999, the World Health Assembly (WHA) urged

all member states to begin the process leading to laboratory containment of WPV (1). The World Health Organization (WHO) global action plan for laboratory containment of WPV issued in 1999 indicated a staged approach that begins with a national survey of all biomedical facilities (Phase I); the purpose of the survey is to alert institutions and facilities to the need for containment, encourage reduction of WPV materials, and develop a national inventory of facilities holding such materials. The survey and inventory provide a facility database for use in all subsequent steps toward global poliovirus containment. In May 2008, WHA urged all WHO member states to complete Phase I activities outlined in the *WHO Global Action Plan for Laboratory Containment of Wild Polioviruses* (2,3). In the WHO Western Pacific Region (WPR), Phase I surveys of 77,260 laboratories in the 37 countries and areas of WPR were conducted during 1999–2008. A total of 45 laboratories were identified as holding WPV materials in 2008. This report describes completion of Phase I containment activities by WPR countries, and updates a previous report on Phase I completion in the European Region and global progress (4).

Specific guidelines for Phase I activities in the WPR were issued in 1999 that advised member states and areas\* to conduct national surveys of biomedical facilities,† communicate the need for WPV containment, develop a database of facilities, and compile a national inventory of laboratories identified to possess WPV infectious or potentially infectious materials (WPV materials).§ Facilities were to be advised to dispose of unneeded WPV materials and to handle retained WPV materials under appropriate biosafety conditions. In 1999, the Regional Commission for the Certification of Poliomyelitis Eradication in the Western Pacific (WPR RCC) established progress toward completion of Phase I containment as a requirement for certification of the region as polio-free (5).

\* American Samoa, Australia, Brunei Darussalam, Cambodia, China, Commonwealth of the Cook Islands, Fiji, French Polynesia, Guam, Hong Kong (China), Japan, Kiribati, Lao People's Democratic Republic, Macao (China), Malaysia, Marshall Islands, Micronesia, Mongolia, Nauru, New Caledonia, New Zealand, Niue, Northern Mariana Islands, Palau, Papua New Guinea, Philippines, Pitcairn Islands, Republic of Korea, Samoa, Singapore, Solomon Islands, Republic of Tokelau, Tonga, Tuvalu, Vanuatu, Vietnam, and Federated States of Wallis and Futuna.

† Facilities holding WPV infectious or potentially infectious materials (WPV materials) include diagnostic laboratories with frozen stool specimens, institutions with current or past research on polioviruses, teaching and industrial facilities that use poliovirus as a test virus, and vaccine manufacturers.

§ Infectious materials include clinical materials from persons with confirmed WPV infections; environmental sewage, or water samples in which WPV is present; and replication products containing WPV. Potentially infectious materials include feces, respiratory secretions, environmental sewage, and untreated water samples of unknown origin or collected for any purpose at a time and in a geographic area where presence of WPVs was suspected, and the replication products of such materials. Replication products include cell culture isolates, reference stocks, and laboratory derivatives in poliovirus-permissive cells or animals. For the purposes of containment, vaccine-derived poliovirus materials are treated as equivalent to WPV materials (3).

Preliminary information on Phase I activities was reported by each member state to the WHO regional office annually. When WPR was certified as polio free in October 2000, all member states/areas had initiated Phase I, but only four member states/areas had completed it (Figure).

Strategies for identifying and surveying biomedical facilities differed among WPR countries according to population size, administrative and health infrastructure, economic development, and political structure. In small member states (e.g., Brunei Darussalam and Macao [China]), laboratory surveys were easier to complete by the small number of facilities, the majority of which were under government jurisdiction. In member states with less developed laboratory infrastructures (e.g., Cambodia and the 21 Pacific island countries and areas), health staff at district levels identified the facilities in the country and assessed freezer capacity and power supply to exclude facilities not capable of preserving polioviruses. Containment officials at the national level then focused survey efforts on the facilities assumed to be at higher risk for retaining WPV materials (i.e., those with research or teaching functions). In member states with more developed laboratory infrastructures (e.g., Australia and Republic of Korea), the database of facilities was compiled from preexisting lists of licensed laboratories supplemented with member lists of professional institution associations (e.g., biosafety associations and microbiological societies), and lists for laboratory accreditation or quality control. In the majority of countries, the surveys were completed by calling or visiting nonresponding laboratories. Completeness of the surveys was assessed by a systematic quality-assurance procedure provided by WHO.

By 2006, Phase I was complete in all countries except China and Japan, which have vast biomedical laboratory infrastructures. During 2000–2003, Phase I surveys in China were conducted in facilities operating under the jurisdiction of five Chinese ministries/agencies.<sup>‡</sup> During 2005–2008, a comprehensive approach was initiated which included 1) surveying nearly 50,000 biomedical laboratories under the jurisdiction of the Ministry of Health identified by compiling information at the county, prefecture, and provincial levels; 2) performing a pilot survey in selected provinces of biomedical facilities among 46 ministries and agencies other than the Ministry of Health; and 3) expanding surveys to all provinces and ministries based on the lessons learned from the pilot. Survey completion was facilitated by regulations on safe handling of pathogenic agents issued after confirmed laboratory-acquired SARS infections during the 2003 epidemic (6,7).

In Japan, a nationwide survey was implemented during 2000–2002 by the Ministry of Health, Labor, and Welfare (MHLW) covering 7,865 facilities with an overall return rate of 53.8%. An expanded survey conducted during 2004–2005 achieved a response rate of >99% from the 12,142 facilities under the jurisdiction of the MHLW and 1,367 facilities under the Ministry of Education, Culture, Sport, Science, and Technology, the two ministries overseeing facilities considered most likely to have WPV materials. A further total of 560 facilities were surveyed under the jurisdiction of the remaining ministries. The number of biomedical laboratories surveyed within each facility was not reported. An additional targeted survey of 80 high-risk facilities identified through a search of published poliovirus research was conducted in 2008 to further validate the earlier surveys. Among the 88 laboratories in these facilities, 82 (93%) had been surveyed previously; one laboratory of the six that were not surveyed previously reported holding WPV materials.\*\*

In the WPR, a total of 77,260 biomedical facilities responded to the Phase I surveys for all countries, including 55,688 facilities in China and 14,069 facilities in Japan (Table). Of all biomedical facilities responding to the surveys, 89% (68,831) were clinical diagnostic laboratories, primarily under the jurisdiction of ministries of health; only 32 (0.05%) of these were found to hold WPV materials, 27 of which are laboratories within the Global Polio Laboratory Network (one in Australia, 25 in China, and one in Japan). Of the regional total, 3,838 facilities were listed as being at high risk for retaining WPV materials, 94% of which were located in Australia, China, Japan, and Republic of Korea (Table); 11 (0.3%) of these reported having WPV materials.†† Any facility that had reported retention of WPV materials in a given survey was resurveyed annually. The number of facilities/laboratories retaining WPV materials decreased during the course of Phase I implementation, resulting in a decline from 147 facilities in 1999 to 107 in 2006 to 45 in 2008 (two in Australia, 27 in China, 15 in Japan, and one in the Republic of Korea) (Figure).

All member states documented laboratory containment activities through standardized reports reviewed by the WHO regional office, a panel of experts external to the process, and the RCC. For the two member states with the most complex laboratory infrastructure (China and Japan), the external review of the process included site visits to critical academic and research institutions. In December 2008, the WPR RCC accepted the final reports from China and Japan and

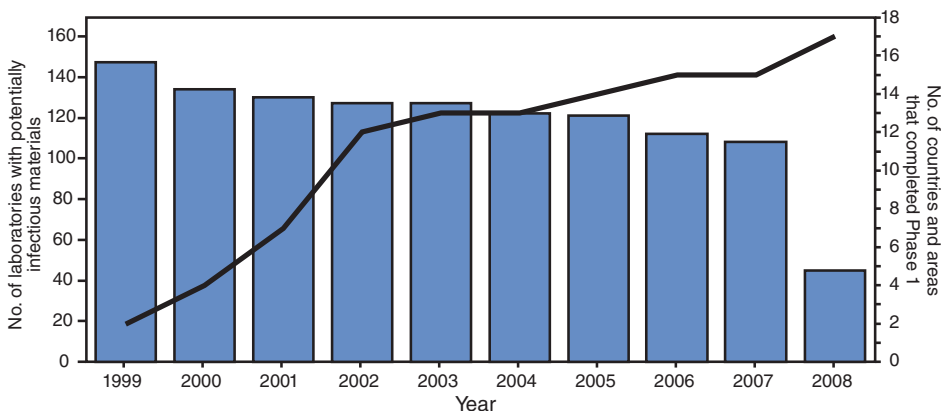
<sup>‡</sup> Ministry of Health, Ministry of Education, State Environmental Protection Administration, State Drug Administration, and Chinese Academy of Science.

\*\* Another facility was added to the national inventory after the survey, when newly requested reference strains were transferred from Japan's National Institute of Infectious Diseases.

†† The other two facilities holding WPV materials were regulatory and production facilities.



**FIGURE. Number of biomedical facilities reporting wild poliovirus (WPV) materials\* and number of World Health Organization (WHO) member states and areas† having completed Phase I of the WPV containment process, by year — WHO Western Pacific Region, 1999–2008**



\* WPV infectious and potentially infectious materials. Additional information available at <http://www.polioeradication.org/content/publications/who-vb-03-729.pdf>.

† Of the 37 member states/areas, the 21 Pacific island countries and areas are presented as a block and include American Samoa, Commonwealth of the Cook Islands, Fiji, French Polynesia, Guam, Kiribati, Marshall Islands, Micronesia, Nauru, New Caledonia, Niue, Northern Mariana Islands, Palau, Pitcairn Islands, Samoa, Solomon Islands, Republic of Tokelau, Tonga, Tuvalu, Vanuatu, and Federated States of Wallis and Futuna. The 16 other member states and areas are Australia, Brunei Darussalam, Cambodia, China, Hong Kong (China), Japan, Lao People's Democratic Republic, Macao (China), Malaysia, Mongolia, New Zealand, Papua New Guinea, Philippines, Republic of Korea, Singapore, and Vietnam.

declared Phase I WPV laboratory containment complete for the region.

**Reported by:** *National containment coordinators, Western Pacific Region member states; B Bayutas, S Roesel, World Health Organization Western Pacific Regional Office, Manila, Philippines. C Wolff, Polio Eradication Dept, World Health Organization, Geneva, Switzerland. Task Force for Global Health, Decatur, Georgia. Global Immunization Div, Div of Viral Diseases, National Center for Immunization and Respiratory Diseases, CDC.*

**Editorial Note:** WPR has joined the WHO European Region in completing Phase I WPV laboratory containment activities (4). The WHO Region of the Americas (AMR), the remaining polio-free region, did not initiate containment activities at the time of certification in 1994 because the policies were not yet developed. The AMR RCC has accepted the final Phase I reports from 24 (69%) of 35 member states, including the United States. The other 11 AMR countries have reported completion of Phase I and are anticipated to submit final reports by the end of 2009. In the three polio-endemic WHO regions (8),<sup>§§</sup> 43 (62%) of 69 polio-free countries and areas have completed Phase I activities.

Multiple challenges were faced in the 10 years required to complete Phase I in the WPR. Prioritization for WPV

containment activities weakened in the ministries of health of many countries after regional certification. China and Japan had to access laboratories under the jurisdiction of a wide range of government agencies in addition to the ministries of health. During 2001–2006, identification of vaccine-derived polioviruses (9), which are considered equivalent as WPV for containment purposes, required several WPR countries to resurvey some facilities.

Despite the challenges, successful completion of Phase I activities is achievable even in countries with highly complex laboratory infrastructures. The only polio-free countries with comparable laboratory infrastructures remaining to complete Phase I activities are Egypt and South Africa. India, which remains polio-endemic in 2009, also has a complex laboratory infrastructure and will require similar efforts. Tangential benefits of Phase I were noted in the WPR and other regions.

Authorities of many member states found that the national survey and inventory process led to a better understanding of the laboratory infrastructure of the country, a strengthened process for laboratory registration, and an increased awareness of the importance of maintaining biosafety standards.

A major accomplishment in the WPR was a progressive voluntary reduction in number of facilities retaining WPV from 147 provisionally reported in 1999 to 45 in 2008, certified by the ministries of health. Authorities in the four relevant WPR countries have indicated the intention to reduce further the number of facilities holding WPV materials.

Subsequent phases of WPV containment are outlined in the newly developed *WHO Global Action Plan to Minimize Poliovirus Facility-Associated Risk in the Post-Eradication/Post-OPV Era* (10). A revised draft edition will be available for public review and comment before the end of 2009.<sup>¶¶</sup> This action plan includes containment of oral poliovirus vaccine (OPV) Sabin strains as well, and establishes the goal of reducing the number of facilities holding WPV worldwide to <20 in the post-eradication/post-OPV era, including vaccine manufacturers. Nonviable poliovirus reagents can replace live polioviruses in national surveillance and diagnostic facilities. Phase II of the action plan begins after evident interruption of WPV

<sup>§§</sup> African Region, Eastern Mediterranean Region, and South-East Asia Region.

<sup>¶¶</sup> Additional information available at <http://www.polioeradication.org>.

**TABLE. Number of biomedical facilities surveyed for the presence of wild poliovirus (WPV) materials,\* by country/area and type of facility, 1999–2008, and number retaining WPV materials in 2008 — World Health Organization Western Pacific Region**

| Country/Area                        | Diagnostic    | Teaching/<br>Research | Industrial   | Other/Unknown | Total         | Retaining<br>WPV materials |
|-------------------------------------|---------------|-----------------------|--------------|---------------|---------------|----------------------------|
| Australia                           | 2,026         | 197                   | 0            | 85            | 2,308         | 2†                         |
| Brunei Darussalam                   | 12            | 2                     | 0            | 0             | 14            |                            |
| Cambodia                            | 0             | 10                    | 0            | 233           | 243           |                            |
| China                               | 52,502        | 1,704                 | 379          | 1,103         | 55,688        | 27†                        |
| Hong Kong (China)                   | 190           | 19                    | 47           | 0             | 256           |                            |
| Japan                               | 10,865        | 1,280                 | 1,285        | 639           | 14,069        | 15†                        |
| Lao People's Democratic Republic    | 23            | 2                     | 0            | 1             | 26            |                            |
| Macao (China)                       | 9             | 3                     | 1            | 1             | 14            |                            |
| Malaysia                            | 431           | 43                    | 0            | 81            | 555           |                            |
| Mongolia                            | 53            | 6                     | 0            | 12            | 71            |                            |
| New Zealand                         | 60            | 44                    | 3            | 2             | 109           |                            |
| Pacific island countries and areas§ | 17            | 4                     | 0            | 6             | 27            |                            |
| Papua New Guinea                    | 19            | 2                     | 0            | 5             | 26            |                            |
| Philippines                         | 2,114         | 40                    | 0            | 609           | 2,763         |                            |
| Republic of Korea                   | 299           | 427                   | 37           | 4             | 767           | 1                          |
| Singapore                           | 83            | 43                    | 19           | 38            | 183           |                            |
| Vietnam                             | 128           | 12                    | 1            | 0             | 141           |                            |
| <b>Total</b>                        | <b>68,831</b> | <b>3,838</b>          | <b>1,772</b> | <b>2,819</b>  | <b>77,260</b> | <b>45†</b>                 |

\* WPV infectious and potentially infectious materials. Additional information available at <http://www.polioeradication.org/content/publications/who-vb-03-729.pdf>.

† Includes 27 laboratories in the Global Polio Laboratory Network: Australia (one), China (25), and Japan (one).

§ The 21 Pacific island countries and areas are presented as a block and include American Samoa, Commonwealth of the Cook Islands, Fiji, French Polynesia, Guam, Kiribati, Marshall Islands, Micronesia, Nauru, New Caledonia, Niue, Northern Mariana Islands, Palau, Pitcairn Islands, Samoa, Solomon Islands, Republic of Tokelau, Tonga, Tuvalu, Vanuatu, and Federated States of Wallis and Futuna.

transmission in one of the four remaining endemic countries, during which member states are requested to establish long-term national policies and regulations for destruction and/or containment of WPV materials. Completion of Phase I in all countries of two WHO regions and the majority of countries in the other four regions, as of the end of 2008, provides a solid base for subsequent polio containment phases.

## References

1. World Health Assembly. 52nd session resolution WHA52.8. Eradication of poliomyelitis. Geneva, Switzerland: World Health Organization; 1999. Available at [http://apps.who.int/gb/archive/pdf\\_files/wha52/ew8.pdf](http://apps.who.int/gb/archive/pdf_files/wha52/ew8.pdf).
2. World Health Assembly. 61st session resolution WHA61.1. Poliomyelitis: mechanism for management of potential risks to eradication. Geneva, Switzerland: World Health Organization; 2008. Available at [http://apps.who.int/gb/ebwha/pdf\\_files/wha61-rec1/a61\\_rec1-part2-en.pdf](http://apps.who.int/gb/ebwha/pdf_files/wha61-rec1/a61_rec1-part2-en.pdf).
3. World Health Organization. WHO global action plan for laboratory containment of wild polioviruses. 2nd edition. Geneva, Switzerland: World Health Organization; 2004. Available at <http://www.polioeradication.org/content/publications/who-vb-03-729.pdf>.
4. CDC. National laboratory inventory for global poliovirus containment—European Region, June 2006. MMWR 2006;55:916–8.
5. World Health Organization Regional Committee for the Western Pacific. 50th session resolution WPR/RC50.R2. Eradication of poliomyelitis in the region. Manila, Philippines: World Health Organization Regional Committee for the Western Pacific; 1999. Available at [http://www.wpro.who.int/rcm/en/archives/rc50/rc\\_resolutions/wpr\\_rc50\\_r02.htm](http://www.wpro.who.int/rcm/en/archives/rc50/rc_resolutions/wpr_rc50_r02.htm).
6. Wang M, Du L, Zhou DH, et al. [Study on the epidemiology and measures for control on severe acute respiratory syndrome in Guangzhou city][Chinese]. Zhonghua Liu Xing Bing Xue Za Zhi 2003;24:353–7.
7. Wilder-Smith A, Low JG. Risk of respiratory infections in health care workers: lessons on infection control emerge from the SARS outbreak. Southeast Asian J Trop Med Public Health. 2005;36:481–8.

8. CDC. Progress toward interruption of wild poliovirus transmission—worldwide, 2008. MMWR 2009;58:308–12.
9. CDC. Update on vaccine-derived polioviruses. MMWR 2006;55:1093–7.
10. World Health Organization. WHO global action plan to minimize poliovirus facility-associated risk in the post-eradication/post-OPV era [draft]. Geneva, Switzerland: World Health Organization; 2009. Available at [http://www.polioeradication.org/content/publications/gapiiworkingdraft\\_07.pdf](http://www.polioeradication.org/content/publications/gapiiworkingdraft_07.pdf).

## Notice to Readers

### National Child Passenger Safety Week — September 12–18, 2009

In 2007, a total of 606 children aged <8 years died and approximately 75,000 were treated in emergency departments for occupant injuries sustained in motor-vehicle crashes in the United States (1,2). National Child Passenger Safety Week, September 12–18, 2009, highlights the importance of the correct installation and use of child restraints.

The use of booster seats has been found to reduce the risk for injury by 59% in children aged 4–7 years, compared with use of adult seat belts alone (3). The National Highway Traffic Safety Administration (NHTSA) and CDC recommend placing infants and children in age-, weight-, and height-appropriate child restraints until they are aged ≥8 years or are

57 inches tall, at which time they can use adult seat belts (4,5). Although no recent data are available on consistent compliance with this recommendation during a specified period, an older study, CDC's Second Injury Control and Risk Survey (ICARIS-2), a national, cross-sectional, random-digit-dial telephone survey conducted July 2001–February 2003, found that 46% of parents of children aged 4–7 years reported their children had used adult seat belts all of the time during the preceding 30 days (6).

Although the use of child restraints is mandatory in all 50 states and the District of Columbia, the age at which children can transition to adult safety belts varies by state. Twenty-three states allow children to use adult seat belts by age  $\leq 7$  years, with four states allowing adult seat belt use for children at age 5 years and one state allowing adult seat belt use for children aged 4 years (7).

Information about National Child Passenger Safety Week activities and child passenger safety is available from NHTSA at <http://www.nhtsa.gov/cps> and from CDC at [http://www.cdc.gov/motorvehiclesafety/child\\_passenger\\_safety/childseat-spot.html](http://www.cdc.gov/motorvehiclesafety/child_passenger_safety/childseat-spot.html).

## References

1. National Highway Traffic Safety Administration. Fatality Analysis Reporting System (FARS) encyclopedia. Available at <http://www-fars.nhtsa.dot.gov/main/index.aspx>.
2. CDC. WISQARS nonfatal injury reports. Available at <http://webappa.cdc.gov/sasweb/ncipc/nfirates.html>.
3. Durbin DR, Elliott MR, Winston FK. Belt-positioning booster seats and reduction in risk of injury among children in vehicle crashes. *JAMA* 2003;28:2835–40.
4. National Highway Traffic Safety Administration. Child passenger safety. A parent's primer. Available at <http://www.nhtsa.dot.gov/staticfiles/DOT/NHTSA/Traffic%20Injury%20Control/Articles/Associated%20Files/4StepsFlyer.pdf>.
5. CDC. Child passenger safety fact sheet. Available at [http://www.cdc.gov/motorvehiclesafety/child\\_passenger\\_safety/cps-factsheet.html](http://www.cdc.gov/motorvehiclesafety/child_passenger_safety/cps-factsheet.html).
6. CDC. Second injury control and risk survey (ICARIS-2). Available at <http://www.cdc.gov/ncipc/osp/icaris2.htm>.
7. Insurance Institute for Highway Safety, Highway Loss Data Institute. Child restraint/belt laws. Available at [http://www.iihs.org/laws/state\\_laws/restrain.html](http://www.iihs.org/laws/state_laws/restrain.html).

**TABLE I. Provisional cases of infrequently reported notifiable diseases (<1,000 cases reported during the preceding year) — United States, week ending September 5, 2009 (35th week)\***

| Disease  | Current week | Cum 2009 | 5-year weekly average† | Total cases reported for previous years |      |       |      |      | States reporting cases during current week (No.)       |
|--|--------------|----------|------------------------|---|------|-------|------|------|--|
|  |              |          |                        | 2008                                    | 2007 | 2006  | 2005 | 2004 |  |
| Anthrax  | —            | —        | 0                      | —                                       | 1    | 1     | —    | —    |  |
| Botulism:  |              |          |                        |   |      |       |      |      |  |
| foodborne  | —            | 12       | 1                      | 17                                      | 32   | 20    | 19   | 16   |  |
| infant   | —            | 31       | 2                      | 109                                     | 85   | 97    | 85   | 87   |  |
| other (wound and unspecified)                            | 1            | 17       | 1                      | 19                                      | 27   | 48    | 31   | 30   | CA (1)   |
| Brucellosis  | 3            | 63       | 2                      | 80                                      | 131  | 121   | 120  | 114  | PA (1), FL (1), CA (1)                                 |
| Chancroid  | —            | 19       | 0                      | 25                                      | 23   | 33    | 17   | 30   |  |
| Cholera  | —            | 4        | 0                      | 5                                       | 7    | 9     | 8    | 6    |  |
| Cyclosporiasis§  | 2            | 99       | 3                      | 139                                     | 93   | 137   | 543  | 160  | FL (2)   |
| Diphtheria   | —            | —        | —                      | —                                       | —    | —     | —    | —    |  |
| Domestic arboviral diseases§,¶:                          |              |          |                        |   |      |       |      |      |  |
| California serogroup                                     | —            | 9        | 5                      | 62                                      | 55   | 67    | 80   | 112  |  |
| eastern equine   | —            | 1        | 1                      | 4                                       | 4    | 8     | 21   | 6    |  |
| Powassan   | —            | 1        | 0                      | 2                                       | 7    | 1     | 1    | 1    |  |
| St. Louis  | —            | 7        | 1                      | 13                                      | 9    | 10    | 13   | 12   |  |
| western equine   | —            | —        | —                      | —                                       | —    | —     | —    | —    |  |
| Ehrlichiosis/Anaplasmosis§,**:                           |              |          |                        |   |      |       |      |      |  |
| <i>Ehrlichia chaffeensis</i>                             | 3            | 473      | 20                     | 1,137                                   | 828  | 578   | 506  | 338  | NY (1), SC (1), CA (1)                                 |
| <i>Ehrlichia ewingii</i>                                 | —            | 3        | 0                      | 9                                       | —    | —     | —    | —    |  |
| <i>Anaplasma phagocytophilum</i>                         | 6            | 341      | 17                     | 1,026                                   | 834  | 646   | 786  | 537  | NY (5), NE (1)   |
| undetermined   | —            | 75       | 5                      | 180                                     | 337  | 231   | 112  | 59   |  |
| <i>Haemophilus influenzae</i> ,††                        |              |          |                        |   |      |       |      |      |  |
| invasive disease (age <5 yrs):                           |              |          |                        |   |      |       |      |      |  |
| serotype b   | —            | 16       | 0                      | 30                                      | 22   | 29    | 9    | 19   |  |
| nonserotype b  | 1            | 141      | 2                      | 244                                     | 199  | 175   | 135  | 135  | MN (1)   |
| unknown serotype   | 1            | 146      | 3                      | 163                                     | 180  | 179   | 217  | 177  | MD (1)   |
| Hansen disease§  | —            | 45       | 1                      | 80                                      | 101  | 66    | 87   | 105  |  |
| Hantavirus pulmonary syndrome§                           | —            | 6        | 1                      | 18                                      | 32   | 40    | 26   | 24   |  |
| Hemolytic uremic syndrome, postdiarrheal§                | —            | 124      | 8                      | 330                                     | 292  | 288   | 221  | 200  |  |
| Hepatitis C viral, acute                                 | 7            | 1,323    | 15                     | 878                                     | 845  | 766   | 652  | 720  | MI (1), MD (1), WV (1), KY (1), OK (1), WA (1), CA (1) |
| HIV infection, pediatric (age <13 years)§§               | —            | —        | 2                      | —                                       | —    | —     | 380  | 436  |  |
| Influenza-associated pediatric mortality§,¶¶             | 1            | 113      | 0                      | 90                                      | 77   | 43    | 45   | —    | MS (1)   |
| Listeriosis  | 6            | 434      | 21                     | 759                                     | 808  | 884   | 896  | 753  | NY (3), MI (1), OK (1), CA (1)                         |
| Measles***   | —            | 55       | 1                      | 140                                     | 43   | 55    | 66   | 37   |  |
| Meningococcal disease, invasive†††:                      |              |          |                        |   |      |       |      |      |  |
| A, C, Y, and W-135                                       | 2            | 183      | 4                      | 330                                     | 325  | 318   | 297  | —    | MN (1), OK (1)   |
| serogroup B  | —            | 96       | 2                      | 188                                     | 167  | 193   | 156  | —    |  |
| other serogroup  | —            | 18       | 0                      | 38                                      | 35   | 32    | 27   | —    |  |
| unknown serogroup  | 4            | 317      | 8                      | 616                                     | 550  | 651   | 765  | —    | PA (1), MD (1), CA (2)                                 |
| Mumps  | 7            | 252      | 13                     | 454                                     | 800  | 6,584 | 314  | 258  | NY (2), NYC (3), IL (1), NV (1)                        |
| Novel influenza A virus infections                       | —            | §§§      | 0                      | 2                                       | 4    | N     | N    | N    |  |
| Plague   | —            | 6        | 0                      | 3                                       | 7    | 17    | 8    | 3    |  |
| Poliomyelitis, paralytic                                 | —            | —        | —                      | —                                       | —    | —     | 1    | —    |  |
| Polio virus infection, nonparalytic§                     | —            | —        | —                      | —                                       | —    | N     | N    | N    |  |
| Psittacosis§   | —            | 7        | 0                      | 8                                       | 12   | 21    | 16   | 12   |  |
| Q fever total§,¶¶¶:                                      | 1            | 55       | 3                      | 124                                     | 171  | 169   | 136  | 70   |  |
| acute  | 1            | 46       | 1                      | 110                                     | —    | —     | —    | —    | NE (1)   |
| chronic  | —            | 9        | —                      | 14                                      | —    | —     | —    | —    |  |
| Rabies, human  | —            | 1        | 0                      | 2                                       | 1    | 3     | 2    | 7    |  |
| Rubella****  | —            | 4        | 0                      | 16                                      | 12   | 11    | 11   | 10   |  |
| Rubella, congenital syndrome                             | —            | 1        | —                      | —                                       | —    | 1     | 1    | —    |  |
| SARS-CoV§,††††   | —            | —        | —                      | —                                       | —    | —     | —    | —    |  |
| Smallpox§  | —            | —        | —                      | —                                       | —    | —     | —    | —    |  |
| Streptococcal toxic-shock syndrome§                      | 2            | 99       | 1                      | 157                                     | 132  | 125   | 129  | 132  | CT (2)   |
| Syphilis, congenital (age <1 yr)                         | —            | 117      | 8                      | 434                                     | 430  | 349   | 329  | 353  |  |
| Tetanus  | —            | 6        | 1                      | 19                                      | 28   | 41    | 27   | 34   |  |
| Toxic-shock syndrome (staphylococcal)§                   | 2            | 54       | 2                      | 71                                      | 92   | 101   | 90   | 95   | NY (1), CA (1)   |
| Trichinellosis   | —            | 12       | 0                      | 39                                      | 5    | 15    | 16   | 5    |  |
| Tularemia  | 1            | 42       | 4                      | 123                                     | 137  | 95    | 154  | 134  | AR (1)   |
| Typhoid fever  | 3            | 228      | 11                     | 449                                     | 434  | 353   | 324  | 322  | CA (3)   |
| Vancomycin-intermediate <i>Staphylococcus aureus</i> §   | 3            | 50       | 1                      | 63                                      | 37   | 6     | 2    | —    | NY (1), FL (2)   |
| Vancomycin-resistant <i>Staphylococcus aureus</i> §      | —            | —        | —                      | —                                       | 2    | 1     | 3    | 1    |  |
| Vibriosis (noncholera <i>Vibrio</i> species infections)§ | 14           | 314      | 11                     | 492                                     | 549  | N     | N    | N    | OH (1), MD (1), FL (5), AZ (3), WA (2), CA (2)         |
| Yellow fever   | —            | —        | —                      | —                                       | —    | —     | —    | —    |  |

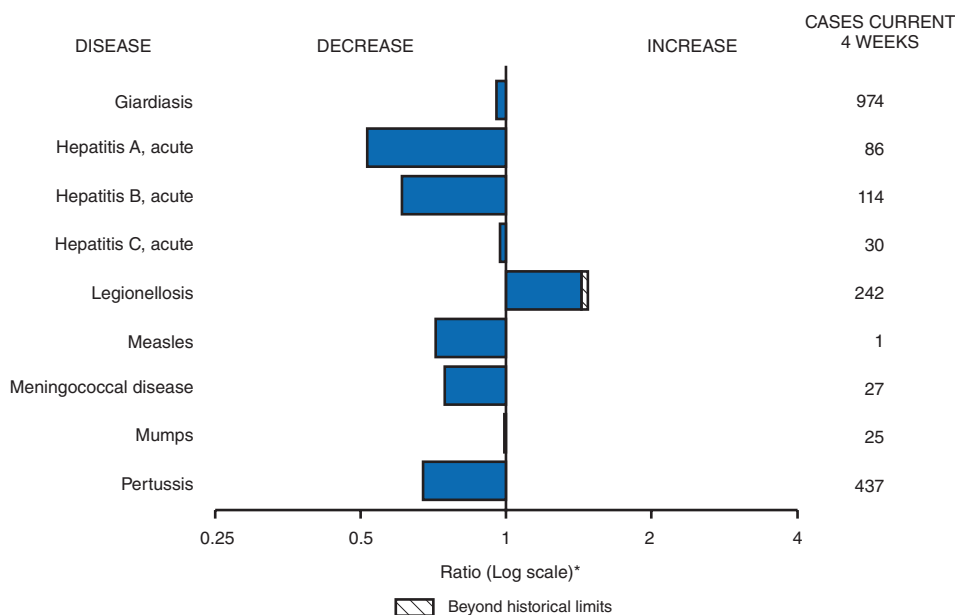
See Table I footnotes on next page.



**TABLE I. (Continued) Provisional cases of infrequently reported notifiable diseases (<1,000 cases reported during the preceding year) — United States, week ending September 5, 2009 (35th week)\***

—: No reported cases. N: Not reportable. Cum: Cumulative year-to-date counts.  
 \* Incidence data for reporting year 2008 and 2009 are provisional, whereas data for 2004, 2005, 2006, and 2007 are finalized.  
 † Calculated by summing the incidence counts for the current week, the 2 weeks preceding the current week, and the 2 weeks following the current week, for a total of 5 preceding years. The total sum of incident cases is then divided by 25 weeks. Additional information is available at <http://www.cdc.gov/epo/dphsi/phs/files/5yearweeklyaverage.pdf>.  
 § Not reportable in all states. Data from states where the condition is not reportable are excluded from this table, except starting in 2007 for the domestic arboviral diseases and influenza-associated pediatric mortality, and in 2003 for SARS-CoV. Reporting exceptions are available at <http://www.cdc.gov/epo/dphsi/phs/infdis.htm>.  
 ¶ Includes both neuroinvasive and nonneuroinvasive. Updated weekly from reports to the Division of Vector-Borne Infectious Diseases, National Center for Zoonotic, Vector-Borne, and Enteric Diseases (ArboNET Surveillance). Data for West Nile virus are available in Table II.  
 \*\* The names of the reporting categories changed in 2008 as a result of revisions to the case definitions. Cases reported prior to 2008 were reported in the categories: Ehrlichiosis, human monocytic (analogous to *E. chaffeensis*); Ehrlichiosis, human granulocytic (analogous to *Anaplasma phagocytophilum*), and Ehrlichiosis, unspecified, or other agent (which included cases unable to be clearly placed in other categories, as well as possible cases of *E. ewingii*).  
 †† Data for *H. influenzae* (all ages, all serotypes) are available in Table II.  
 §§ Updated monthly from reports to the Division of HIV/AIDS Prevention, National Center for HIV/AIDS, Viral Hepatitis, STD, and TB Prevention. Implementation of HIV reporting influences the number of cases reported. Updates of pediatric HIV data have been temporarily suspended until upgrading of the national HIV/AIDS surveillance data management system is completed. Data for HIV/AIDS, when available, are displayed in Table IV, which appears quarterly.  
 ¶¶ Updated weekly from reports to the Influenza Division, National Center for Immunization and Respiratory Diseases. One hundred and twelve influenza-associated pediatric deaths occurring during the 2008–09 influenza season have been reported.  
 \*\*\* No measles cases were reported for the current week.  
 ††† Data for meningococcal disease (all serogroups) are available in Table II.  
 §§§ CDC discontinued reporting of individual confirmed and probable cases of novel influenza A (H1N1) viruses infections on July 24, 2009. CDC will report the total number of novel influenza A (H1N1) hospitalizations and deaths weekly on the CDC H1N1 influenza website (<http://www.cdc.gov/h1n1flu>).  
 ¶¶¶ In 2008, Q fever acute and chronic reporting categories were recognized as a result of revisions to the Q fever case definition. Prior to that time, case counts were not differentiated with respect to acute and chronic Q fever cases.  
 \*\*\*\* No rubella cases were reported for the current week.  
 †††† Updated weekly from reports to the Division of Viral and Rickettsial Diseases, National Center for Zoonotic, Vector-Borne, and Enteric Diseases.

**FIGURE I. Selected notifiable disease reports, United States, comparison of provisional 4-week totals September 5, 2009, with historical data**



\* Ratio of current 4-week total to mean of 15 4-week totals (from previous, comparable, and subsequent 4-week periods for the past 5 years). The point where the hatched area begins is based on the mean and two standard deviations of these 4-week totals.

**Notifiable Disease Data Team and 122 Cities Mortality Data Team**  
 Patsy A. Hall  
 Deborah A. Adams      Rosaline Dhara  
 Willie J. Anderson      Michael S. Wodajo  
 Jose Aponte      Pearl C. Sharp  
 Lenee Blanton

**TABLE II. Provisional cases of selected notifiable diseases, United States, weeks ending September 5, 2009, and August 30, 2008 (35th week)\***

| Reporting area              | Chlamydia <sup>†</sup> |                   |        |          |          | Coccidioidomycosis |                   |     |          |          | Cryptosporidiosis |                   |     |          |          |
|-----------------------------|------------------------|-------------------|--------|----------|----------|--------------------|-------------------|-----|----------|----------|-------------------|-------------------|-----|----------|----------|
|                             | Current week           | Previous 52 weeks |        | Cum 2009 | Cum 2008 | Current week       | Previous 52 weeks |     | Cum 2009 | Cum 2008 | Current week      | Previous 52 weeks |     | Cum 2009 | Cum 2008 |
|                             |                        | Med               | Max    |          |          |                    | Med               | Max |          |          |                   | Med               | Max |          |          |
| <b>United States</b>        | 11,558                 | 22,433            | 25,700 | 753,367  | 791,568  | 186                | 156               | 472 | 7,398    | 4,349    | 108               | 124               | 401 | 4,084    | 4,809    |
| <b>New England</b>          | 688                    | 759               | 1,655  | 27,100   | 24,759   | —                  | 0                 | 1   | 1        | 1        | —                 | 5                 | 30  | 198      | 285      |
| Connecticut                 | 221                    | 224               | 1,306  | 7,809    | 7,095    | N                  | 0                 | 0   | N        | N        | —                 | 0                 | 23  | 23       | 41       |
| Maine <sup>§</sup>          | 34                     | 48                | 75     | 1,634    | 1,689    | N                  | 0                 | 0   | N        | N        | —                 | 0                 | 5   | 22       | 30       |
| Massachusetts               | 386                    | 334               | 945    | 13,313   | 11,911   | N                  | 0                 | 0   | N        | N        | —                 | 2                 | 13  | 73       | 116      |
| New Hampshire               | 1                      | 39                | 63     | 1,162    | 1,378    | —                  | 0                 | 1   | 1        | 1        | —                 | 1                 | 4   | 39       | 47       |
| Rhode Island <sup>§</sup>   | —                      | 63                | 244    | 2,392    | 1,898    | —                  | 0                 | 0   | —        | —        | —                 | 0                 | 3   | 4        | 7        |
| Vermont <sup>§</sup>        | 46                     | 21                | 53     | 790      | 788      | N                  | 0                 | 0   | N        | N        | —                 | 1                 | 7   | 37       | 44       |
| <b>Mid. Atlantic</b>        | 2,613                  | 2,913             | 6,734  | 103,410  | 98,562   | —                  | 0                 | 0   | —        | —        | 15                | 13                | 28  | 484      | 481      |
| New Jersey                  | 293                    | 415               | 838    | 13,952   | 15,045   | N                  | 0                 | 0   | N        | N        | —                 | 0                 | 3   | 8        | 29       |
| New York (Upstate)          | 728                    | 579               | 4,563  | 20,745   | 18,114   | N                  | 0                 | 0   | N        | N        | 10                | 4                 | 13  | 138      | 157      |
| New York City               | 1,153                  | 1,136             | 3,130  | 40,202   | 37,865   | N                  | 0                 | 0   | N        | N        | —                 | 1                 | 8   | 45       | 72       |
| Pennsylvania                | 439                    | 824               | 1,072  | 28,511   | 27,538   | N                  | 0                 | 0   | N        | N        | 5                 | 7                 | 19  | 293      | 223      |
| <b>E.N. Central</b>         | 1,593                  | 3,494             | 4,382  | 113,700  | 129,441  | —                  | 0                 | 4   | 22       | 34       | 11                | 28                | 120 | 908      | 1,246    |
| Illinois                    | 446                    | 1,088             | 1,367  | 35,040   | 39,159   | N                  | 0                 | 0   | N        | N        | —                 | 2                 | 11  | 77       | 129      |
| Indiana                     | 365                    | 418               | 713    | 15,219   | 14,459   | N                  | 0                 | 0   | N        | N        | —                 | 3                 | 17  | 128      | 125      |
| Michigan                    | 720                    | 851               | 1,332  | 30,854   | 30,580   | —                  | 0                 | 3   | 11       | 25       | 2                 | 5                 | 13  | 167      | 166      |
| Ohio                        | 62                     | 798               | 1,300  | 21,173   | 30,826   | —                  | 0                 | 2   | 11       | 9        | 9                 | 9                 | 59  | 278      | 333      |
| Wisconsin                   | —                      | 349               | 494    | 11,414   | 14,417   | N                  | 0                 | 0   | N        | N        | —                 | 8                 | 40  | 258      | 493      |
| <b>W.N. Central</b>         | 418                    | 1,320             | 1,658  | 43,513   | 44,712   | —                  | 0                 | 1   | 7        | 1        | 8                 | 17                | 47  | 638      | 646      |
| Iowa                        | 129                    | 192               | 256    | 6,527    | 5,852    | N                  | 0                 | 0   | N        | N        | —                 | 4                 | 12  | 149      | 205      |
| Kansas                      | 1                      | 154               | 549    | 5,289    | 6,159    | N                  | 0                 | 0   | N        | N        | —                 | 1                 | 5   | 50       | 55       |
| Minnesota                   | —                      | 258               | 342    | 7,983    | 9,665    | —                  | 0                 | 0   | —        | —        | —                 | 4                 | 33  | 182      | 132      |
| Missouri                    | 288                    | 509               | 645    | 17,546   | 16,365   | —                  | 0                 | 1   | 7        | 1        | 3                 | 3                 | 12  | 118      | 120      |
| Nebraska <sup>§</sup>       | —                      | 101               | 219    | 3,423    | 3,565    | N                  | 0                 | 0   | N        | N        | 5                 | 2                 | 5   | 64       | 76       |
| North Dakota                | —                      | 25                | 60     | 772      | 1,202    | N                  | 0                 | 0   | N        | N        | —                 | 0                 | 10  | 7        | 2        |
| South Dakota                | —                      | 57                | 81     | 1,973    | 1,904    | N                  | 0                 | 0   | N        | N        | —                 | 2                 | 6   | 68       | 56       |
| <b>S. Atlantic</b>          | 1,831                  | 4,136             | 5,453  | 131,289  | 161,296  | —                  | 0                 | 1   | 5        | 3        | 24                | 21                | 49  | 680      | 579      |
| Delaware                    | 91                     | 84                | 180    | 3,192    | 2,484    | —                  | 0                 | 1   | 1        | 1        | 1                 | 0                 | 1   | 6        | 10       |
| District of Columbia        | 126                    | 127               | 226    | 4,586    | 4,661    | —                  | 0                 | 0   | —        | —        | —                 | 0                 | 2   | 2        | 9        |
| Florida                     | 580                    | 1,413             | 1,597  | 49,125   | 47,905   | N                  | 0                 | 0   | N        | N        | 17                | 8                 | 35  | 247      | 254      |
| Georgia                     | 4                      | 753               | 1,909  | 20,138   | 28,222   | N                  | 0                 | 0   | N        | N        | 6                 | 6                 | 23  | 256      | 159      |
| Maryland <sup>§</sup>       | 299                    | 430               | 772    | 14,292   | 15,533   | —                  | 0                 | 1   | 4        | 2        | —                 | 1                 | 5   | 29       | 25       |
| North Carolina              | —                      | 0                 | 1,193  | —        | 22,309   | N                  | 0                 | 0   | N        | N        | —                 | 1                 | 16  | 58       | 17       |
| South Carolina <sup>§</sup> | —                      | 550               | 1,424  | 16,142   | 17,186   | N                  | 0                 | 0   | N        | N        | —                 | 1                 | 6   | 32       | 34       |
| Virginia <sup>§</sup>       | 683                    | 616               | 926    | 21,371   | 20,826   | N                  | 0                 | 0   | N        | N        | —                 | 1                 | 5   | 40       | 53       |
| West Virginia               | 48                     | 68                | 101    | 2,443    | 2,170    | N                  | 0                 | 0   | N        | N        | —                 | 0                 | 2   | 10       | 18       |
| <b>E.S. Central</b>         | 1,641                  | 1,751             | 2,209  | 61,888   | 56,390   | —                  | 0                 | 0   | —        | —        | 5                 | 3                 | 10  | 127      | 106      |
| Alabama <sup>§</sup>        | 14                     | 475               | 624    | 15,693   | 16,993   | N                  | 0                 | 0   | N        | N        | —                 | 1                 | 4   | 36       | 48       |
| Kentucky                    | 437                    | 256               | 458    | 9,057    | 7,824    | N                  | 0                 | 0   | N        | N        | 2                 | 1                 | 4   | 39       | 23       |
| Mississippi                 | 565                    | 442               | 841    | 16,464   | 13,388   | N                  | 0                 | 0   | N        | N        | —                 | 0                 | 3   | 8        | 11       |
| Tennessee <sup>§</sup>      | 625                    | 575               | 809    | 20,674   | 18,185   | N                  | 0                 | 0   | N        | N        | 3                 | 1                 | 5   | 44       | 24       |
| <b>W.S. Central</b>         | 820                    | 2,883             | 5,300  | 100,336  | 100,239  | —                  | 0                 | 1   | 1        | 3        | 27                | 11                | 271 | 305      | 793      |
| Arkansas <sup>§</sup>       | 239                    | 273               | 418    | 9,723    | 9,653    | N                  | 0                 | 0   | N        | N        | 2                 | 1                 | 10  | 30       | 45       |
| Louisiana                   | 290                    | 420               | 1,134  | 14,457   | 14,640   | —                  | 0                 | 1   | 1        | 3        | 2                 | 1                 | 6   | 29       | 40       |
| Oklahoma                    | 291                    | 178               | 2,735  | 9,559    | 8,966    | N                  | 0                 | 0   | N        | N        | 5                 | 2                 | 16  | 80       | 55       |
| Texas <sup>§</sup>          | —                      | 1,967             | 2,520  | 66,597   | 66,980   | N                  | 0                 | 0   | N        | N        | 18                | 7                 | 258 | 166      | 653      |
| <b>Mountain</b>             | 537                    | 1,449             | 2,145  | 47,625   | 49,676   | 163                | 105               | 369 | 5,730    | 2,936    | 1                 | 9                 | 25  | 310      | 397      |
| Arizona                     | 67                     | 467               | 735    | 15,695   | 16,502   | 163                | 104               | 365 | 5,662    | 2,858    | —                 | 1                 | 4   | 25       | 59       |
| Colorado                    | —                      | 376               | 728    | 10,949   | 11,749   | N                  | 0                 | 0   | N        | N        | —                 | 2                 | 10  | 94       | 74       |
| Idaho <sup>§</sup>          | —                      | 68                | 313    | 2,373    | 2,690    | N                  | 0                 | 0   | N        | N        | 1                 | 1                 | 7   | 53       | 42       |
| Montana <sup>§</sup>        | —                      | 54                | 88     | 1,903    | 2,059    | N                  | 0                 | 0   | N        | N        | —                 | 0                 | 4   | 27       | 38       |
| Nevada <sup>§</sup>         | 276                    | 167               | 455    | 6,780    | 6,551    | —                  | 1                 | 3   | 40       | 43       | —                 | 0                 | 4   | 14       | 11       |
| New Mexico <sup>§</sup>     | 163                    | 177               | 540    | 5,910    | 5,169    | —                  | 0                 | 2   | 8        | 23       | —                 | 2                 | 10  | 69       | 134      |
| Utah                        | —                      | 103               | 251    | 2,679    | 3,975    | —                  | 0                 | 2   | 20       | 10       | —                 | 0                 | 6   | 13       | 24       |
| Wyoming <sup>§</sup>        | 31                     | 34                | 97     | 1,336    | 981      | —                  | 0                 | 1   | —        | 2        | —                 | 0                 | 2   | 15       | 15       |
| <b>Pacific</b>              | 1,417                  | 3,645             | 4,689  | 124,506  | 126,493  | 23                 | 41                | 172 | 1,632    | 1,371    | 17                | 11                | 24  | 434      | 276      |
| Alaska                      | —                      | 96                | 199    | 3,071    | 3,153    | N                  | 0                 | 0   | N        | N        | —                 | 0                 | 1   | 4        | 3        |
| California                  | 1,279                  | 2,803             | 3,599  | 96,945   | 98,369   | 23                 | 41                | 172 | 1,632    | 1,371    | 9                 | 6                 | 20  | 256      | 161      |
| Hawaii                      | —                      | 119               | 247    | 3,942    | 3,895    | N                  | 0                 | 0   | N        | N        | —                 | 0                 | 1   | 1        | 1        |
| Oregon <sup>§</sup>         | 115                    | 201               | 631    | 6,308    | 6,671    | N                  | 0                 | 0   | N        | N        | 2                 | 3                 | 8   | 121      | 50       |
| Washington                  | 23                     | 414               | 571    | 14,240   | 14,405   | N                  | 0                 | 0   | N        | N        | 6                 | 1                 | 6   | 52       | 61       |
| American Samoa              | —                      | 0                 | 0      | —        | 73       | N                  | 0                 | 0   | N        | N        | N                 | 0                 | 0   | N        | N        |
| C.N.M.I.                    | —                      | —                 | —      | —        | —        | —                  | —                 | —   | —        | —        | —                 | —                 | —   | —        | —        |
| Guam                        | —                      | 2                 | 8      | —        | 107      | —                  | 0                 | 0   | —        | —        | —                 | 0                 | 0   | —        | —        |
| Puerto Rico                 | —                      | 130               | 332    | 5,016    | 4,896    | N                  | 0                 | 0   | N        | N        | N                 | 0                 | 0   | N        | N        |
| U.S. Virgin Islands         | —                      | 9                 | 17     | 290      | 473      | —                  | 0                 | 0   | —        | —        | —                 | 0                 | 0   | —        | —        |

C.N.M.I.: Commonwealth of Northern Mariana Islands.

U: Unavailable. —: No reported cases. N: Not reportable. Cum: Cumulative year-to-date counts. Med: Median. Max: Maximum.

\* Incidence data for reporting year 2008 and 2009 are provisional. Data for HIV/AIDS, AIDS, and TB, when available, are displayed in Table IV, which appears quarterly.

<sup>†</sup> Chlamydia refers to genital infections caused by *Chlamydia trachomatis*.

<sup>§</sup> Contains data reported through the National Electronic Disease Surveillance System (NEDSS).

TABLE II. (Continued) Provisional cases of selected notifiable diseases, United States, weeks ending September 5, 2009, and August 30, 2008 (35th week)\*

| Reporting area       | Giardiasis   |                   |     |          |          | Gonorrhea    |                   |       |          |          | Haemophilus influenzae, invasive<br>All ages, all serotypes† |                   |     |          |          |
|----------------------|--------------|-------------------|-----|----------|----------|--------------|-------------------|-------|----------|----------|--|-------------------|-----|----------|----------|
|                      | Current week | Previous 52 weeks |     | Cum 2009 | Cum 2008 | Current week | Previous 52 weeks |       | Cum 2009 | Cum 2008 | Current week   | Previous 52 weeks |     | Cum 2009 | Cum 2008 |
|                      |              | Med               | Max |          |          |              | Med               | Max   |          |          |  | Med               | Max |          |          |
| <b>United States</b> | 219          | 321               | 641 | 10,833   | 11,487   | 2,989        | 5,358             | 7,164 | 178,307  | 223,791  | 25   | 57                | 124 | 2,013    | 1,978    |
| <b>New England</b>   | 5            | 27                | 55  | 828      | 1,036    | 88           | 95                | 301   | 3,246    | 3,464    | 2  | 3                 | 16  | 133      | 114      |
| Connecticut          | —            | 5                 | 14  | 162      | 224      | 43           | 46                | 275   | 1,486    | 1,607    | 2  | 0                 | 12  | 42       | 27       |
| Maine§               | 5            | 3                 | 12  | 127      | 109      | 3            | 2                 | 9     | 90       | 63       | —  | 0                 | 2   | 14       | 9        |
| Massachusetts        | —            | 10                | 27  | 318      | 436      | 42           | 39                | 112   | 1,345    | 1,469    | —  | 2                 | 5   | 64       | 55       |
| New Hampshire        | —            | 3                 | 10  | 104      | 105      | —            | 2                 | 6     | 70       | 73       | —  | 0                 | 2   | 7        | 9        |
| Rhode Island§        | —            | 1                 | 8   | 35       | 61       | —            | 6                 | 19    | 225      | 226      | —  | 0                 | 7   | 3        | 6        |
| Vermont§             | —            | 3                 | 15  | 82       | 101      | —            | 1                 | 4     | 30       | 26       | —  | 0                 | 1   | 3        | 8        |
| <b>Mid. Atlantic</b> | 43           | 62                | 116 | 2,007    | 2,105    | 586          | 588               | 1,138 | 20,720   | 21,975   | 6  | 12                | 25  | 428      | 369      |
| New Jersey           | —            | 7                 | 17  | 173      | 347      | 63           | 87                | 123   | 2,904    | 3,616    | —  | 2                 | 7   | 82       | 63       |
| New York (Upstate)   | 27           | 24                | 81  | 815      | 696      | 207          | 106               | 664   | 3,854    | 4,058    | 2  | 3                 | 20  | 103      | 107      |
| New York City        | —            | 16                | 30  | 494      | 558      | 204          | 210               | 577   | 7,451    | 6,926    | —  | 2                 | 11  | 82       | 63       |
| Pennsylvania         | 16           | 16                | 46  | 525      | 504      | 112          | 190               | 267   | 6,511    | 7,375    | 4  | 4                 | 10  | 161      | 136      |
| <b>E.N. Central</b>  | 22           | 45                | 90  | 1,451    | 1,727    | 530          | 1,079             | 1,627 | 35,233   | 46,176   | —  | 9                 | 28  | 366      | 319      |
| Illinois             | —            | 9                 | 25  | 270      | 476      | 175          | 335               | 494   | 10,750   | 13,633   | —  | 3                 | 9   | 102      | 100      |
| Indiana              | N            | 0                 | 11  | N        | N        | 132          | 146               | 252   | 5,049    | 5,851    | —  | 1                 | 22  | 49       | 56       |
| Michigan             | 1            | 12                | 22  | 390      | 372      | 195          | 284               | 493   | 9,957    | 11,253   | —  | 0                 | 3   | 16       | 17       |
| Ohio                 | 21           | 16                | 31  | 534      | 552      | 28           | 251               | 455   | 6,566    | 11,146   | —  | 2                 | 6   | 73       | 99       |
| Wisconsin            | —            | 8                 | 19  | 257      | 327      | —            | 91                | 140   | 2,911    | 4,293    | —  | 2                 | 20  | 126      | 47       |
| <b>W.N. Central</b>  | 13           | 25                | 143 | 1,008    | 1,267    | 114          | 286               | 393   | 9,358    | 11,311   | 5  | 3                 | 15  | 112      | 145      |
| Iowa                 | —            | 6                 | 18  | 199      | 203      | 17           | 34                | 53    | 1,114    | 1,019    | —  | 0                 | 0   | —        | 2        |
| Kansas               | —            | 2                 | 7   | 70       | 107      | 2            | 35                | 83    | 1,328    | 1,498    | —  | 0                 | 2   | 11       | 17       |
| Minnesota            | —            | 0                 | 106 | 250      | 386      | —            | 43                | 65    | 1,314    | 2,132    | 5  | 0                 | 10  | 40       | 43       |
| Missouri             | 12           | 7                 | 25  | 316      | 334      | 95           | 129               | 183   | 4,429    | 5,409    | —  | 1                 | 4   | 37       | 53       |
| Nebraska§            | 1            | 3                 | 9   | 114      | 138      | —            | 23                | 53    | 887      | 963      | —  | 0                 | 4   | 19       | 21       |
| North Dakota         | —            | 0                 | 16  | 9        | 10       | —            | 2                 | 7     | 43       | 76       | —  | 0                 | 4   | 5        | 9        |
| South Dakota         | —            | 1                 | 7   | 50       | 89       | —            | 7                 | 20    | 243      | 214      | —  | 0                 | 0   | —        | —        |
| <b>S. Atlantic</b>   | 39           | 70                | 109 | 2,460    | 1,861    | 533          | 1,177             | 2,042 | 37,640   | 56,789   | 11   | 13                | 31  | 514      | 506      |
| Delaware             | —            | 0                 | 3   | 18       | 28       | 28           | 16                | 37    | 631      | 762      | —  | 0                 | 1   | 3        | 6        |
| District of Columbia | —            | 0                 | 5   | 16       | 44       | 53           | 50                | 89    | 1,827    | 1,723    | —  | 0                 | 2   | —        | 5        |
| Florida              | 33           | 37                | 59  | 1,287    | 775      | 186          | 416               | 486   | 14,276   | 16,082   | 2  | 4                 | 10  | 174      | 131      |
| Georgia              | —            | 13                | 67  | 650      | 464      | 3            | 251               | 876   | 6,840    | 10,464   | 3  | 3                 | 9   | 113      | 104      |
| Maryland§            | 2            | 5                 | 9   | 163      | 180      | 88           | 121               | 212   | 3,823    | 4,128    | 3  | 1                 | 6   | 64       | 74       |
| North Carolina       | N            | 0                 | 0   | N        | N        | —            | 0                 | 470   | —        | 9,812    | —  | 1                 | 17  | 57       | 54       |
| South Carolina§      | 4            | 2                 | 8   | 57       | 81       | —            | 171               | 413   | 5,070    | 6,297    | 2  | 1                 | 5   | 36       | 46       |
| Virginia§            | —            | 8                 | 31  | 238      | 239      | 161          | 147               | 308   | 4,821    | 7,001    | —  | 1                 | 6   | 42       | 68       |
| West Virginia        | —            | 1                 | 3   | 31       | 50       | 14           | 10                | 23    | 352      | 520      | 1  | 0                 | 3   | 25       | 18       |
| <b>E.S. Central</b>  | 3            | 8                 | 20  | 232      | 308      | 456          | 514               | 714   | 17,795   | 20,485   | —  | 3                 | 9   | 118      | 103      |
| Alabama§             | 1            | 3                 | 12  | 109      | 178      | 6            | 143               | 216   | 4,432    | 6,705    | —  | 0                 | 4   | 26       | 16       |
| Kentucky             | N            | 0                 | 0   | N        | N        | 108          | 84                | 135   | 2,631    | 3,098    | —  | 0                 | 5   | 18       | 6        |
| Mississippi          | N            | 0                 | 0   | N        | N        | 179          | 142               | 252   | 5,138    | 4,879    | —  | 0                 | 1   | 4        | 11       |
| Tennessee§           | 2            | 4                 | 13  | 123      | 130      | 163          | 160               | 273   | 5,594    | 5,803    | —  | 2                 | 6   | 70       | 70       |
| <b>W.S. Central</b>  | 13           | 9                 | 22  | 298      | 267      | 290          | 865               | 1,383 | 29,227   | 34,539   | —  | 2                 | 22  | 79       | 90       |
| Arkansas§            | 3            | 2                 | 8   | 91       | 88       | 87           | 83                | 134   | 2,997    | 3,155    | —  | 0                 | 2   | 13       | 11       |
| Louisiana            | 4            | 3                 | 8   | 96       | 99       | 96           | 146               | 420   | 4,662    | 6,343    | —  | 0                 | 1   | 12       | 8        |
| Oklahoma             | 6            | 4                 | 18  | 111      | 80       | 107          | 70                | 613   | 3,328    | 3,299    | —  | 1                 | 20  | 53       | 64       |
| Texas§               | N            | 0                 | 0   | N        | N        | —            | 551               | 725   | 18,240   | 21,742   | —  | 0                 | 1   | 1        | 7        |
| <b>Mountain</b>      | 19           | 26                | 62  | 883      | 998      | 119          | 176               | 313   | 5,652    | 7,756    | 1  | 5                 | 11  | 171      | 222      |
| Arizona              | 4            | 3                 | 10  | 134      | 84       | 16           | 56                | 88    | 1,784    | 2,336    | 1  | 1                 | 7   | 60       | 88       |
| Colorado             | —            | 9                 | 27  | 311      | 340      | —            | 57                | 152   | 1,616    | 2,302    | —  | 1                 | 6   | 53       | 42       |
| Idaho§               | 4            | 3                 | 10  | 112      | 125      | —            | 2                 | 13    | 67       | 121      | —  | 0                 | 1   | 4        | 12       |
| Montana§             | —            | 2                 | 10  | 71       | 61       | —            | 1                 | 6     | 48       | 78       | —  | 0                 | 1   | 1        | 2        |
| Nevada§              | 10           | 2                 | 8   | 75       | 72       | 75           | 30                | 91    | 1,213    | 1,549    | —  | 0                 | 2   | 14       | 14       |
| New Mexico§          | 1            | 1                 | 7   | 58       | 76       | 27           | 24                | 52    | 746      | 939      | —  | 0                 | 3   | 16       | 32       |
| Utah                 | —            | 4                 | 15  | 91       | 210      | —            | 5                 | 15    | 126      | 347      | —  | 1                 | 2   | 20       | 29       |
| Wyoming§             | —            | 1                 | 4   | 31       | 30       | 1            | 1                 | 7     | 52       | 84       | —  | 0                 | 1   | 3        | 3        |
| <b>Pacific</b>       | 62           | 50                | 130 | 1,666    | 1,918    | 273          | 550               | 765   | 19,436   | 21,296   | —  | 2                 | 8   | 92       | 110      |
| Alaska               | —            | 2                 | 10  | 64       | 59       | —            | 15                | 24    | 512      | 356      | —  | 0                 | 3   | 13       | 15       |
| California           | 47           | 34                | 57  | 1,131    | 1,285    | 236          | 468               | 658   | 16,309   | 17,489   | —  | 0                 | 3   | 22       | 38       |
| Hawaii               | —            | 0                 | 2   | 9        | 31       | —            | 12                | 21    | 416      | 418      | —  | 0                 | 3   | 22       | 14       |
| Oregon§              | 3            | 7                 | 17  | 224      | 302      | 33           | 20                | 48    | 682      | 822      | —  | 1                 | 3   | 32       | 41       |
| Washington           | 12           | 7                 | 74  | 238      | 241      | 4            | 46                | 80    | 1,517    | 2,211    | —  | 0                 | 2   | 3        | 2        |
| American Samoa       | —            | 0                 | 0   | —        | —        | —            | 0                 | 0     | —        | 3        | —  | 0                 | 0   | —        | —        |
| C.N.M.I.             | —            | —                 | —   | —        | —        | —            | —                 | —     | —        | —        | —  | —                 | —   | —        | —        |
| Guam                 | —            | 0                 | 0   | —        | —        | —            | 1                 | 15    | —        | 45       | —  | 0                 | 0   | —        | —        |
| Puerto Rico          | 1            | 2                 | 15  | 63       | 132      | —            | 4                 | 24    | 165      | 194      | —  | 0                 | 1   | 2        | 1        |
| U.S. Virgin Islands  | —            | 0                 | 0   | —        | —        | —            | 2                 | 7     | 80       | 91       | N  | 0                 | 0   | N        | N        |

C.N.M.I.: Commonwealth of Northern Mariana Islands.

U: Unavailable. —: No reported cases. N: Not reportable. Cum: Cumulative year-to-date counts. Med: Median. Max: Maximum.

\* Incidence data for reporting year 2008 and 2009 are provisional.

† Data for *H. influenzae* (age <5 yrs for serotype b, nonserotype b, and unknown serotype) are available in Table I.

§ Contains data reported through the National Electronic Disease Surveillance System (NEDSS).

**TABLE II. (Continued) Provisional cases of selected notifiable diseases, United States, weeks ending September 5, 2009, and August 30, 2008 (35th week)\***

| Reporting area       | Hepatitis (viral, acute), by type† |                   |    |          |          |              |                   |     |          |          | Legionellosis |                   |     |          |          |
|----------------------|------------------------------------|-------------------|----|----------|----------|--------------|-------------------|-----|----------|----------|---------------|-------------------|-----|----------|----------|
|                      | A                                  |                   |    |          | B        |              |                   |     |          |          |               |                   |     |          |          |
|                      | Current week                       | Previous 52 weeks |    | Cum 2009 | Cum 2008 | Current week | Previous 52 weeks |     | Cum 2009 | Cum 2008 | Current week  | Previous 52 weeks |     | Cum 2009 | Cum 2008 |
|                      | Med                                | Max               |    |          |          | Med          | Max               |     |          |          | Med           | Max               |     |          |          |
| <b>United States</b> | 22                                 | 36                | 89 | 1,215    | 1,801    | 31           | 65                | 197 | 2,067    | 2,539    | 48            | 51                | 117 | 1,823    | 1,941    |
| <b>New England</b>   | 2                                  | 2                 | 8  | 54       | 90       | —            | 1                 | 4   | 24       | 56       | 3             | 2                 | 18  | 85       | 136      |
| Connecticut          | 2                                  | 0                 | 4  | 16       | 18       | —            | 0                 | 3   | 10       | 22       | 3             | 1                 | 5   | 40       | 26       |
| Maine§               | —                                  | 0                 | 5  | 1        | 5        | —            | 0                 | 2   | 8        | 10       | —             | 0                 | 2   | 4        | 6        |
| Massachusetts        | —                                  | 1                 | 3  | 29       | 46       | —            | 0                 | 2   | 3        | 14       | —             | 1                 | 5   | 25       | 58       |
| New Hampshire        | —                                  | 0                 | 1  | 3        | 9        | —            | 0                 | 2   | 3        | 4        | —             | 0                 | 2   | 8        | 24       |
| Rhode Island§        | —                                  | 0                 | 2  | 3        | 10       | —            | 0                 | 0   | —        | 4        | —             | 0                 | 14  | 4        | 17       |
| Vermont§             | —                                  | 0                 | 1  | 2        | 2        | —            | 0                 | 1   | —        | 2        | —             | 0                 | 1   | 4        | 5        |
| <b>Mid. Atlantic</b> | 3                                  | 5                 | 13 | 151      | 209      | 1            | 7                 | 17  | 218      | 306      | 17            | 15                | 61  | 716      | 626      |
| New Jersey           | —                                  | 1                 | 5  | 23       | 51       | —            | 1                 | 6   | 54       | 89       | 1             | 3                 | 14  | 119      | 75       |
| New York (Upstate)   | 3                                  | 1                 | 4  | 36       | 41       | —            | 1                 | 11  | 38       | 42       | 11            | 5                 | 29  | 234      | 188      |
| New York City        | —                                  | 2                 | 6  | 50       | 72       | —            | 1                 | 4   | 41       | 69       | —             | 2                 | 20  | 123      | 85       |
| Pennsylvania         | —                                  | 1                 | 4  | 42       | 45       | 1            | 3                 | 8   | 85       | 106      | 5             | 6                 | 25  | 240      | 278      |
| <b>E.N. Central</b>  | 2                                  | 5                 | 17 | 172      | 247      | 1            | 8                 | 21  | 258      | 344      | 10            | 9                 | 29  | 323      | 432      |
| Illinois             | —                                  | 1                 | 12 | 77       | 91       | —            | 1                 | 7   | 35       | 131      | —             | 1                 | 13  | 26       | 55       |
| Indiana              | —                                  | 0                 | 3  | 12       | 13       | —            | 1                 | 18  | 45       | 23       | —             | 1                 | 5   | 25       | 37       |
| Michigan             | —                                  | 1                 | 5  | 46       | 89       | —            | 3                 | 8   | 89       | 95       | 3             | 2                 | 10  | 77       | 123      |
| Ohio                 | 2                                  | 1                 | 4  | 30       | 29       | 1            | 1                 | 13  | 66       | 81       | 7             | 4                 | 17  | 190      | 196      |
| Wisconsin            | —                                  | 0                 | 3  | 7        | 25       | —            | 0                 | 4   | 23       | 14       | —             | 0                 | 6   | 5        | 21       |
| <b>W.N. Central</b>  | —                                  | 2                 | 16 | 85       | 200      | —            | 3                 | 16  | 109      | 56       | —             | 2                 | 7   | 64       | 90       |
| Iowa                 | —                                  | 1                 | 3  | 24       | 95       | —            | 0                 | 3   | 20       | 14       | —             | 0                 | 2   | 15       | 12       |
| Kansas               | —                                  | 0                 | 1  | 7        | 12       | —            | 0                 | 2   | 5        | 6        | —             | 0                 | 1   | 3        | 1        |
| Minnesota            | —                                  | 0                 | 12 | 14       | 26       | —            | 0                 | 11  | 20       | 7        | —             | 0                 | 3   | 8        | 9        |
| Missouri             | —                                  | 0                 | 3  | 19       | 25       | —            | 1                 | 5   | 52       | 23       | —             | 1                 | 5   | 28       | 50       |
| Nebraska§            | —                                  | 0                 | 3  | 19       | 39       | —            | 0                 | 2   | 11       | 5        | —             | 0                 | 2   | 8        | 16       |
| North Dakota         | —                                  | 0                 | 2  | —        | —        | —            | 0                 | 1   | —        | 1        | —             | 0                 | 3   | 1        | —        |
| South Dakota         | —                                  | 0                 | 1  | 2        | 3        | —            | 0                 | 1   | 1        | —        | —             | 0                 | 1   | 1        | 2        |
| <b>S. Atlantic</b>   | 5                                  | 7                 | 14 | 272      | 262      | 6            | 18                | 32  | 605      | 614      | 12            | 9                 | 22  | 312      | 308      |
| Delaware             | —                                  | 0                 | 1  | 3        | 6        | U            | 0                 | 1   | U        | U        | —             | 0                 | 5   | 11       | 9        |
| District of Columbia | U                                  | 0                 | 0  | U        | U        | U            | 0                 | 0   | U        | U        | —             | 0                 | 2   | 4        | 11       |
| Florida              | 3                                  | 4                 | 8  | 127      | 99       | 5            | 6                 | 11  | 203      | 214      | 7             | 3                 | 7   | 110      | 93       |
| Georgia              | —                                  | 1                 | 4  | 43       | 35       | 1            | 3                 | 9   | 97       | 118      | —             | 1                 | 5   | 33       | 25       |
| Maryland§            | —                                  | 0                 | 4  | 27       | 33       | —            | 1                 | 5   | 48       | 55       | 5             | 2                 | 10  | 74       | 90       |
| North Carolina       | —                                  | 0                 | 4  | 25       | 47       | —            | 2                 | 19  | 130      | 51       | —             | 0                 | 7   | 39       | 14       |
| South Carolina§      | 2                                  | 0                 | 3  | 27       | 8        | —            | 1                 | 4   | 29       | 49       | —             | 0                 | 1   | 5        | 8        |
| Virginia§            | —                                  | 0                 | 6  | 19       | 29       | —            | 1                 | 10  | 52       | 75       | —             | 1                 | 5   | 32       | 37       |
| West Virginia        | —                                  | 0                 | 1  | 1        | 5        | —            | 0                 | 19  | 46       | 52       | —             | 0                 | 3   | 4        | 21       |
| <b>E.S. Central</b>  | 3                                  | 1                 | 5  | 30       | 57       | 5            | 7                 | 11  | 206      | 261      | 3             | 2                 | 11  | 81       | 87       |
| Alabama§             | —                                  | 0                 | 2  | 7        | 8        | 2            | 2                 | 7   | 62       | 73       | —             | 0                 | 1   | 7        | 13       |
| Kentucky             | 1                                  | 0                 | 2  | 7        | 21       | 1            | 2                 | 7   | 53       | 63       | 1             | 1                 | 3   | 36       | 41       |
| Mississippi          | 1                                  | 0                 | 1  | 8        | 4        | —            | 1                 | 2   | 18       | 32       | —             | 0                 | 1   | 2        | 1        |
| Tennessee§           | 1                                  | 0                 | 2  | 8        | 24       | 2            | 2                 | 6   | 73       | 93       | 2             | 1                 | 8   | 36       | 32       |
| <b>W.S. Central</b>  | —                                  | 3                 | 43 | 103      | 172      | 4            | 10                | 99  | 325      | 505      | —             | 1                 | 21  | 44       | 57       |
| Arkansas§            | —                                  | 0                 | 1  | 4        | 6        | 1            | 1                 | 5   | 36       | 39       | —             | 0                 | 2   | 3        | 9        |
| Louisiana            | —                                  | 0                 | 2  | 3        | 8        | —            | 1                 | 4   | 33       | 63       | —             | 0                 | 2   | 4        | 8        |
| Oklahoma             | —                                  | 0                 | 6  | 3        | 7        | 3            | 2                 | 17  | 69       | 74       | —             | 0                 | 6   | 3        | 3        |
| Texas§               | —                                  | 3                 | 37 | 93       | 151      | —            | 6                 | 76  | 187      | 329      | —             | 1                 | 19  | 34       | 37       |
| <b>Mountain</b>      | —                                  | 3                 | 7  | 109      | 162      | 1            | 3                 | 7   | 88       | 139      | 1             | 2                 | 8   | 73       | 56       |
| Arizona              | —                                  | 2                 | 6  | 52       | 83       | —            | 1                 | 4   | 33       | 55       | 1             | 0                 | 4   | 34       | 14       |
| Colorado             | —                                  | 1                 | 5  | 34       | 28       | —            | 0                 | 2   | 15       | 24       | —             | 0                 | 2   | 7        | 6        |
| Idaho§               | —                                  | 0                 | 1  | 3        | 16       | —            | 0                 | 2   | 6        | 6        | —             | 0                 | 1   | 1        | 3        |
| Montana§             | —                                  | 0                 | 1  | 5        | 1        | —            | 0                 | 0   | —        | 2        | —             | 0                 | 2   | 4        | 4        |
| Nevada§              | —                                  | 0                 | 3  | 6        | 7        | 1            | 0                 | 3   | 21       | 30       | —             | 0                 | 2   | 9        | 8        |
| New Mexico§          | —                                  | 0                 | 1  | 5        | 15       | —            | 0                 | 2   | 5        | 8        | —             | 0                 | 2   | 2        | 5        |
| Utah                 | —                                  | 0                 | 2  | 4        | 9        | —            | 0                 | 3   | 5        | 9        | —             | 0                 | 4   | 15       | 16       |
| Wyoming§             | —                                  | 0                 | 0  | —        | 3        | —            | 0                 | 2   | 3        | 5        | —             | 0                 | 1   | 1        | —        |
| <b>Pacific</b>       | 7                                  | 7                 | 17 | 239      | 402      | 13           | 6                 | 36  | 234      | 258      | 2             | 4                 | 12  | 125      | 149      |
| Alaska               | —                                  | 0                 | 1  | 3        | 3        | —            | 0                 | 1   | 2        | 9        | —             | 0                 | 1   | 1        | 1        |
| California           | 7                                  | 5                 | 17 | 188      | 325      | 10           | 5                 | 28  | 171      | 176      | 2             | 3                 | 9   | 100      | 115      |
| Hawaii               | —                                  | 0                 | 1  | 5        | 14       | —            | 0                 | 1   | 4        | 6        | —             | 0                 | 1   | 1        | 5        |
| Oregon§              | —                                  | 0                 | 2  | 12       | 22       | —            | 0                 | 4   | 26       | 32       | —             | 0                 | 2   | 8        | 13       |
| Washington           | —                                  | 1                 | 4  | 31       | 38       | 3            | 1                 | 8   | 31       | 35       | —             | 0                 | 4   | 15       | 15       |
| American Samoa       | —                                  | 0                 | 0  | —        | —        | —            | 0                 | 0   | —        | —        | N             | 0                 | 0   | N        | N        |
| C.N.M.I.             | —                                  | —                 | —  | —        | —        | —            | —                 | —   | —        | —        | —             | —                 | —   | —        | —        |
| Guam                 | —                                  | 0                 | 0  | —        | —        | —            | 0                 | 0   | —        | —        | —             | 0                 | 0   | —        | —        |
| Puerto Rico          | —                                  | 0                 | 2  | 17       | 19       | —            | 0                 | 3   | 12       | 40       | —             | 0                 | 0   | —        | —        |
| U.S. Virgin Islands  | —                                  | 0                 | 0  | —        | —        | —            | 0                 | 0   | —        | —        | —             | 0                 | 0   | —        | —        |

C.N.M.I.: Commonwealth of Northern Mariana Islands.

U: Unavailable. —: No reported cases. N: Not reportable. Cum: Cumulative year-to-date counts. Med: Median. Max: Maximum.

\* Incidence data for reporting year 2008 and 2009 are provisional.

† Data for acute hepatitis C, viral are available in Table I.

§ Contains data reported through the National Electronic Disease Surveillance System (NEDSS).



TABLE II. (Continued) Provisional cases of selected notifiable diseases, United States, weeks ending September 5, 2009, and August 30, 2008 (35th week)\*

| Reporting area       | Lyme disease |                   |       |          |          | Malaria      |                   |     |          |          | Meningococcal disease, invasive†<br>All groups |                   |     |          |          |
|----------------------|--------------|-------------------|-------|----------|----------|--------------|-------------------|-----|----------|----------|--|-------------------|-----|----------|----------|
|                      | Current week | Previous 52 weeks |       | Cum 2009 | Cum 2008 | Current week | Previous 52 weeks |     | Cum 2009 | Cum 2008 | Current week                                   | Previous 52 weeks |     | Cum 2009 | Cum 2008 |
|                      |              | Med               | Max   |          |          |              | Med               | Max |          |          |  | Med               | Max |          |          |
| <b>United States</b> | 410          | 486               | 1,637 | 17,950   | 23,066   | 12           | 23                | 46  | 740      | 778      | 6  | 17                | 48  | 614      | 863      |
| <b>New England</b>   | 10           | 91                | 327   | 2,505    | 8,678    | —            | 0                 | 5   | 27       | 39       | —  | 0                 | 4   | 20       | 23       |
| Connecticut          | —            | 0                 | 105   | —        | 2,984    | —            | 0                 | 4   | 5        | 10       | —  | 0                 | 1   | 2        | 1        |
| Maine§               | 10           | 8                 | 73    | 467      | 312      | —            | 0                 | 1   | 1        | 1        | —  | 0                 | 1   | 3        | 4        |
| Massachusetts        | —            | 24                | 125   | 1,041    | 3,729    | —            | 0                 | 4   | 16       | 19       | —  | 0                 | 3   | 11       | 15       |
| New Hampshire        | —            | 13                | 73    | 750      | 1,255    | —            | 0                 | 1   | 2        | 3        | —  | 0                 | 1   | 1        | 2        |
| Rhode Island§        | —            | 0                 | 78    | 54       | 119      | —            | 0                 | 1   | 1        | 2        | —  | 0                 | 1   | 2        | 1        |
| Vermont§             | —            | 5                 | 35    | 193      | 279      | —            | 0                 | 1   | 2        | 4        | —  | 0                 | 1   | 1        | —        |
| <b>Mid. Atlantic</b> | 346          | 246               | 1,401 | 11,230   | 9,198    | 1            | 5                 | 17  | 167      | 209      | 1  | 2                 | 5   | 69       | 96       |
| New Jersey           | —            | 35                | 263   | 2,621    | 2,767    | —            | 0                 | 3   | —        | 52       | —  | 0                 | 2   | 8        | 13       |
| New York (Upstate)   | 229          | 87                | 1,368 | 2,891    | 2,982    | 1            | 1                 | 10  | 36       | 21       | —  | 0                 | 2   | 17       | 25       |
| New York City        | —            | 2                 | 33    | 58       | 551      | —            | 3                 | 11  | 95       | 109      | —  | 0                 | 2   | 11       | 19       |
| Pennsylvania         | 117          | 53                | 601   | 5,660    | 2,898    | —            | 1                 | 4   | 36       | 27       | 1  | 1                 | 4   | 33       | 39       |
| <b>E.N. Central</b>  | 7            | 19                | 174   | 1,459    | 1,828    | 1            | 3                 | 8   | 101      | 111      | —  | 3                 | 8   | 99       | 149      |
| Illinois             | —            | 1                 | 10    | 80       | 96       | —            | 1                 | 4   | 44       | 59       | —  | 1                 | 6   | 25       | 52       |
| Indiana              | —            | 1                 | 4     | 33       | 30       | —            | 0                 | 1   | 7        | 5        | —  | 0                 | 3   | 24       | 22       |
| Michigan             | 5            | 1                 | 11    | 74       | 54       | —            | 0                 | 3   | 17       | 13       | —  | 0                 | 5   | 18       | 25       |
| Ohio                 | 2            | 1                 | 5     | 32       | 28       | 1            | 1                 | 6   | 29       | 22       | —  | 0                 | 3   | 26       | 32       |
| Wisconsin            | —            | 15                | 160   | 1,240    | 1,620    | —            | 0                 | 2   | 4        | 12       | —  | 0                 | 1   | 6        | 18       |
| <b>W.N. Central</b>  | 1            | 5                 | 336   | 163      | 438      | 2            | 1                 | 7   | 37       | 44       | 1  | 1                 | 9   | 49       | 76       |
| Iowa                 | —            | 1                 | 11    | 64       | 89       | —            | 0                 | 3   | 6        | 5        | —  | 0                 | 1   | 6        | 15       |
| Kansas               | —            | 0                 | 4     | 15       | 6        | —            | 0                 | 2   | 3        | 4        | —  | 0                 | 2   | 7        | 4        |
| Minnesota            | —            | 1                 | 326   | 67       | 329      | —            | 0                 | 7   | 13       | 19       | 1  | 0                 | 4   | 10       | 21       |
| Missouri             | —            | 0                 | 2     | 4        | 3        | 1            | 0                 | 2   | 9        | 9        | —  | 0                 | 3   | 18       | 23       |
| Nebraska§            | 1            | 0                 | 3     | 12       | 8        | 1            | 0                 | 1   | 5        | 7        | —  | 0                 | 1   | 5        | 10       |
| North Dakota         | —            | 0                 | 10    | —        | —        | —            | 0                 | 0   | —        | —        | —  | 0                 | 3   | 1        | 1        |
| South Dakota         | —            | 0                 | 1     | 1        | 3        | —            | 0                 | 1   | 1        | —        | —  | 0                 | 1   | 2        | 2        |
| <b>S. Atlantic</b>   | 36           | 63                | 205   | 2,366    | 2,701    | 2            | 6                 | 17  | 233      | 195      | 1  | 3                 | 9   | 113      | 119      |
| Delaware             | 5            | 12                | 62    | 698      | 592      | —            | 0                 | 1   | 3        | 2        | —  | 0                 | 1   | 2        | 1        |
| District of Columbia | —            | 0                 | 5     | 18       | 53       | —            | 0                 | 2   | 5        | 2        | —  | 0                 | 0   | —        | —        |
| Florida              | 4            | 1                 | 10    | 48       | 40       | 2            | 2                 | 7   | 69       | 34       | —  | 1                 | 4   | 42       | 41       |
| Georgia              | —            | 0                 | 6     | 39       | 31       | —            | 1                 | 5   | 49       | 45       | —  | 0                 | 2   | 21       | 14       |
| Maryland§            | 27           | 27                | 130   | 1,113    | 1,355    | —            | 1                 | 8   | 51       | 52       | 1  | 0                 | 1   | 6        | 12       |
| North Carolina       | —            | 1                 | 14    | 56       | 10       | —            | 0                 | 5   | 21       | 21       | —  | 0                 | 5   | 18       | 11       |
| South Carolina§      | —            | 0                 | 3     | 18       | 18       | —            | 0                 | 1   | 2        | 7        | —  | 0                 | 1   | 10       | 19       |
| Virginia§            | —            | 12                | 61    | 312      | 498      | —            | 1                 | 4   | 31       | 30       | —  | 0                 | 2   | 9        | 16       |
| West Virginia        | —            | 0                 | 17    | 64       | 104      | —            | 0                 | 1   | 2        | 2        | —  | 0                 | 2   | 5        | 5        |
| <b>E.S. Central</b>  | —            | 0                 | 2     | 18       | 37       | —            | 0                 | 3   | 23       | 13       | —  | 0                 | 3   | 20       | 39       |
| Alabama§             | —            | 0                 | 1     | 2        | 8        | —            | 0                 | 3   | 6        | 3        | —  | 0                 | 1   | 5        | 5        |
| Kentucky             | —            | 0                 | 1     | 1        | 4        | —            | 0                 | 2   | 8        | 4        | —  | 0                 | 1   | 4        | 7        |
| Mississippi          | —            | 0                 | 0     | —        | 1        | —            | 0                 | 1   | 1        | 1        | —  | 0                 | 1   | 2        | 9        |
| Tennessee§           | —            | 0                 | 2     | 15       | 24       | —            | 0                 | 3   | 8        | 5        | —  | 0                 | 1   | 9        | 18       |
| <b>W.S. Central</b>  | 5            | 1                 | 21    | 34       | 68       | 1            | 1                 | 8   | 34       | 49       | 1  | 1                 | 12  | 58       | 93       |
| Arkansas§            | —            | 0                 | 0     | —        | —        | —            | 0                 | 1   | 3        | —        | —  | 0                 | 2   | 5        | 13       |
| Louisiana            | —            | 0                 | 1     | —        | 2        | 1            | 0                 | 1   | 3        | 2        | —  | 0                 | 3   | 11       | 19       |
| Oklahoma             | —            | 0                 | 2     | —        | —        | —            | 0                 | 2   | 2        | 2        | 1  | 0                 | 3   | 6        | 12       |
| Texas§               | 5            | 1                 | 21    | 34       | 66       | —            | 1                 | 7   | 26       | 45       | —  | 1                 | 9   | 36       | 49       |
| <b>Mountain</b>      | —            | 1                 | 13    | 31       | 41       | 1            | 0                 | 4   | 21       | 20       | —  | 1                 | 4   | 49       | 46       |
| Arizona              | —            | 0                 | 2     | 3        | 7        | 1            | 0                 | 2   | 5        | 9        | —  | 0                 | 2   | 13       | 6        |
| Colorado             | —            | 0                 | 1     | 3        | 2        | —            | 0                 | 3   | 8        | 3        | —  | 0                 | 2   | 15       | 9        |
| Idaho§               | —            | 0                 | 2     | 9        | 6        | —            | 0                 | 1   | 1        | —        | —  | 0                 | 1   | 5        | 4        |
| Montana§             | —            | 0                 | 13    | 2        | 4        | —            | 0                 | 3   | 4        | —        | —  | 0                 | 2   | 4        | 4        |
| Nevada§              | —            | 0                 | 2     | 12       | 10       | —            | 0                 | 1   | —        | 4        | —  | 0                 | 2   | 4        | 7        |
| New Mexico§          | —            | 0                 | 1     | 1        | 8        | —            | 0                 | 1   | —        | 2        | —  | 0                 | 1   | 3        | 7        |
| Utah                 | —            | 0                 | 1     | —        | 2        | —            | 0                 | 2   | 3        | 2        | —  | 0                 | 1   | 1        | 7        |
| Wyoming§             | —            | 0                 | 1     | 1        | 2        | —            | 0                 | 0   | —        | —        | —  | 0                 | 2   | 4        | 2        |
| <b>Pacific</b>       | 5            | 3                 | 13    | 144      | 77       | 4            | 3                 | 10  | 97       | 98       | 2  | 3                 | 14  | 137      | 222      |
| Alaska               | —            | 0                 | 1     | 2        | 5        | —            | 0                 | 1   | 2        | 4        | —  | 0                 | 2   | 3        | 6        |
| California           | 5            | 3                 | 12    | 125      | 39       | 3            | 2                 | 8   | 72       | 70       | 2  | 2                 | 8   | 92       | 163      |
| Hawaii               | N            | 0                 | 0     | N        | N        | —            | 0                 | 1   | 1        | 2        | —  | 0                 | 1   | 3        | 4        |
| Oregon§              | —            | 0                 | 3     | 12       | 26       | —            | 0                 | 2   | 9        | 4        | —  | 0                 | 6   | 26       | 26       |
| Washington           | —            | 0                 | 12    | 5        | 7        | 1            | 0                 | 3   | 13       | 18       | —  | 0                 | 6   | 13       | 23       |
| American Samoa       | N            | 0                 | 0     | N        | N        | —            | 0                 | 0   | —        | —        | —  | 0                 | 0   | —        | —        |
| C.N.M.I.             | —            | —                 | —     | —        | —        | —            | —                 | —   | —        | —        | —  | —                 | —   | —        | —        |
| Guam                 | —            | 0                 | 0     | —        | —        | —            | 0                 | 2   | —        | 1        | —  | 0                 | 0   | —        | —        |
| Puerto Rico          | N            | 0                 | 0     | N        | N        | —            | 0                 | 1   | 2        | 2        | —  | 0                 | 1   | —        | 2        |
| U.S. Virgin Islands  | N            | 0                 | 0     | N        | N        | —            | 0                 | 0   | —        | —        | —  | 0                 | 0   | —        | —        |

C.N.M.I.: Commonwealth of Northern Mariana Islands.

U: Unavailable. —: No reported cases. N: Not reportable. Cum: Cumulative year-to-date counts. Med: Median. Max: Maximum.

\* Incidence data for reporting year 2008 and 2009 are provisional.

† Data for meningococcal disease, invasive caused by serogroups A, C, Y, and W-135; serogroup B; other serogroup; and unknown serogroup are available in Table I.

§ Contains data reported through the National Electronic Disease Surveillance System (NEDSS).

**TABLE II. (Continued) Provisional cases of selected notifiable diseases, United States, weeks ending September 5, 2009, and August 30, 2008 (35th week)\***

| Reporting area       | Pertussis    |                   |       |          |          | Rabies, animal |                   |     |          |          | Rocky Mountain spotted fever |                   |     |          |          |
|----------------------|--------------|-------------------|-------|----------|----------|----------------|-------------------|-----|----------|----------|------------------------------|-------------------|-----|----------|----------|
|                      | Current week | Previous 52 weeks |       | Cum 2009 | Cum 2008 | Current week   | Previous 52 weeks |     | Cum 2009 | Cum 2008 | Current week                 | Previous 52 weeks |     | Cum 2009 | Cum 2008 |
|                      |              | Med               | Max   |          |          |                | Med               | Max |          |          |                              | Med               | Max |          |          |
| <b>United States</b> | 87           | 270               | 1,697 | 8,643    | 6,022    | 57             | 68                | 138 | 2,432    | 2,909    | 7                            | 33                | 179 | 980      | 1,592    |
| <b>New England</b>   | —            | 15                | 29    | 386      | 683      | 10             | 8                 | 14  | 224      | 272      | —                            | 0                 | 2   | 8        | 4        |
| Connecticut          | —            | 1                 | 4     | 26       | 39       | 8              | 3                 | 10  | 101      | 130      | —                            | 0                 | 0   | —        | —        |
| Maine†               | —            | 1                 | 10    | 64       | 23       | 2              | 1                 | 5   | 36       | 36       | —                            | 0                 | 2   | 4        | 1        |
| Massachusetts        | —            | 8                 | 21    | 224      | 537      | —              | 0                 | 0   | —        | —        | —                            | 0                 | 1   | 3        | 1        |
| New Hampshire        | —            | 1                 | 7     | 53       | 21       | —              | 0                 | 7   | 24       | 29       | —                            | 0                 | 0   | —        | 1        |
| Rhode Island†        | —            | 0                 | 5     | 11       | 55       | —              | 0                 | 3   | 27       | 24       | —                            | 0                 | 2   | —        | 1        |
| Vermont†             | —            | 0                 | 2     | 8        | 8        | —              | 1                 | 4   | 36       | 53       | —                            | 0                 | 1   | 1        | —        |
| <b>Mid. Atlantic</b> | 6            | 23                | 64    | 755      | 699      | 20             | 14                | 27  | 428      | 632      | 1                            | 1                 | 29  | 49       | 102      |
| New Jersey           | —            | 4                 | 12    | 128      | 144      | —              | 0                 | 0   | —        | —        | —                            | 0                 | 2   | —        | 70       |
| New York (Upstate)   | 2            | 5                 | 41    | 136      | 265      | 20             | 8                 | 20  | 310      | 343      | 1                            | 0                 | 29  | 10       | 12       |
| New York City        | 1            | 0                 | 21    | 53       | 49       | —              | 0                 | 2   | —        | 12       | —                            | 0                 | 4   | 21       | 9        |
| Pennsylvania         | 3            | 13                | 33    | 438      | 241      | —              | 5                 | 17  | 118      | 277      | —                            | 0                 | 2   | 18       | 11       |
| <b>E.N. Central</b>  | 17           | 52                | 238   | 1,759    | 985      | 8              | 2                 | 19  | 177      | 184      | —                            | 1                 | 6   | 55       | 118      |
| Illinois             | —            | 12                | 45    | 268      | 190      | 3              | 1                 | 9   | 71       | 77       | —                            | 1                 | 6   | 33       | 86       |
| Indiana              | —            | 5                 | 158   | 171      | 35       | —              | 0                 | 6   | 17       | 4        | —                            | 0                 | 3   | 4        | 6        |
| Michigan             | 4            | 11                | 26    | 452      | 157      | —              | 1                 | 5   | 49       | 63       | —                            | 0                 | 2   | 5        | 3        |
| Ohio                 | 13           | 20                | 57    | 774      | 514      | 5              | 0                 | 7   | 40       | 40       | —                            | 0                 | 3   | 13       | 23       |
| Wisconsin            | —            | 3                 | 11    | 94       | 89       | N              | 0                 | 0   | N        | N        | —                            | 0                 | 0   | —        | —        |
| <b>W.N. Central</b>  | 17           | 34                | 872   | 1,237    | 499      | 4              | 5                 | 17  | 198      | 209      | —                            | 4                 | 25  | 207      | 349      |
| Iowa                 | —            | 6                 | 21    | 122      | 76       | —              | 0                 | 5   | 24       | 16       | —                            | 0                 | 2   | 4        | 7        |
| Kansas               | —            | 4                 | 12    | 132      | 40       | —              | 1                 | 6   | 56       | 50       | —                            | 0                 | 1   | 2        | —        |
| Minnesota            | —            | 0                 | 808   | 165      | 153      | 1              | 0                 | 11  | 40       | 34       | —                            | 0                 | 1   | 2        | —        |
| Missouri             | 14           | 20                | 51    | 678      | 159      | 3              | 1                 | 5   | 47       | 47       | —                            | 4                 | 24  | 189      | 324      |
| Nebraska†            | 3            | 4                 | 32    | 108      | 51       | —              | 0                 | 2   | —        | 28       | —                            | 0                 | 2   | 10       | 15       |
| North Dakota         | —            | 0                 | 24    | 17       | 1        | —              | 0                 | 9   | 4        | 17       | —                            | 0                 | 1   | —        | —        |
| South Dakota         | —            | 0                 | 10    | 15       | 19       | —              | 0                 | 4   | 27       | 17       | —                            | 0                 | 0   | —        | 3        |
| <b>S. Atlantic</b>   | 31           | 27                | 71    | 1,074    | 580      | 3              | 25                | 111 | 1,057    | 1,211    | —                            | 13                | 42  | 365      | 526      |
| Delaware             | —            | 0                 | 2     | 10       | 11       | —              | 0                 | 0   | —        | —        | —                            | 0                 | 3   | 14       | 26       |
| District of Columbia | —            | 0                 | 2     | 2        | 3        | —              | 0                 | 0   | —        | —        | —                            | 0                 | 0   | —        | 6        |
| Florida              | 23           | 8                 | 32    | 392      | 173      | —              | 0                 | 95  | 121      | 138      | —                            | 0                 | 2   | 5        | 9        |
| Georgia              | —            | 3                 | 11    | 106      | 61       | —              | 0                 | 71  | 262      | 272      | —                            | 1                 | 6   | 34       | 64       |
| Maryland†            | 1            | 3                 | 10    | 76       | 74       | —              | 6                 | 14  | 226      | 312      | —                            | 1                 | 3   | 27       | 66       |
| North Carolina       | —            | 0                 | 65    | 204      | 79       | N              | 0                 | 4   | N        | N        | —                            | 8                 | 36  | 225      | 222      |
| South Carolina†      | 2            | 3                 | 17    | 151      | 83       | —              | 0                 | 0   | —        | —        | —                            | 0                 | 9   | 15       | 28       |
| Virginia†            | 3            | 3                 | 24    | 109      | 89       | —              | 10                | 23  | 364      | 424      | —                            | 2                 | 9   | 42       | 98       |
| West Virginia        | 2            | 0                 | 5     | 24       | 7        | 3              | 2                 | 6   | 84       | 65       | —                            | 0                 | 1   | 3        | 7        |
| <b>E.S. Central</b>  | 2            | 14                | 33    | 548      | 216      | 1              | 2                 | 7   | 70       | 131      | 3                            | 4                 | 19  | 170      | 236      |
| Alabama†             | —            | 4                 | 19    | 202      | 28       | —              | 0                 | 0   | —        | —        | —                            | 1                 | 6   | 38       | 61       |
| Kentucky             | 2            | 6                 | 15    | 178      | 58       | 1              | 1                 | 4   | 36       | 32       | —                            | 0                 | 1   | 1        | 1        |
| Mississippi          | —            | 1                 | 4     | 40       | 76       | —              | 0                 | 2   | —        | 2        | —                            | 0                 | 1   | 7        | 9        |
| Tennessee†           | —            | 3                 | 14    | 128      | 54       | —              | 1                 | 4   | 34       | 97       | 3                            | 2                 | 15  | 124      | 165      |
| <b>W.S. Central</b>  | —            | 55                | 389   | 1,748    | 960      | —              | 0                 | 13  | 45       | 74       | 3                            | 1                 | 161 | 105      | 224      |
| Arkansas†            | —            | 4                 | 38    | 155      | 58       | —              | 0                 | 5   | 23       | 41       | 3                            | 0                 | 61  | 47       | 44       |
| Louisiana            | —            | 2                 | 8     | 90       | 59       | —              | 0                 | 0   | —        | —        | —                            | 0                 | 1   | 2        | 5        |
| Oklahoma             | —            | 0                 | 45    | 36       | 30       | —              | 0                 | 13  | 21       | 31       | —                            | 0                 | 98  | 44       | 142      |
| Texas†               | —            | 41                | 304   | 1,467    | 813      | —              | 0                 | 1   | 1        | 2        | —                            | 0                 | 6   | 12       | 33       |
| <b>Mountain</b>      | 1            | 17                | 31    | 571      | 593      | —              | 1                 | 9   | 57       | 61       | —                            | 1                 | 3   | 19       | 30       |
| Arizona              | —            | 4                 | 10    | 144      | 161      | N              | 0                 | 0   | N        | N        | —                            | 0                 | 2   | 4        | 8        |
| Colorado             | —            | 5                 | 12    | 193      | 109      | —              | 0                 | 0   | —        | —        | —                            | 0                 | 0   | —        | 1        |
| Idaho†               | 1            | 1                 | 5     | 54       | 22       | —              | 0                 | 2   | —        | 7        | —                            | 0                 | 1   | 1        | 1        |
| Montana†             | —            | 0                 | 4     | 12       | 74       | —              | 0                 | 4   | 16       | 7        | —                            | 0                 | 2   | 8        | 3        |
| Nevada†              | —            | 0                 | 3     | 10       | 26       | —              | 0                 | 1   | 4        | 9        | —                            | 0                 | 1   | 1        | 2        |
| New Mexico†          | —            | 1                 | 10    | 37       | 32       | —              | 0                 | 2   | 16       | 23       | —                            | 0                 | 1   | 1        | 3        |
| Utah                 | —            | 3                 | 19    | 113      | 158      | —              | 0                 | 6   | 4        | 4        | —                            | 0                 | 1   | 1        | 5        |
| Wyoming†             | —            | 0                 | 5     | 8        | 11       | —              | 0                 | 4   | 17       | 11       | —                            | 0                 | 2   | 3        | 7        |
| <b>Pacific</b>       | 13           | 19                | 98    | 565      | 807      | 11             | 5                 | 12  | 176      | 135      | —                            | 0                 | 1   | 2        | 3        |
| Alaska               | —            | 1                 | 21    | 31       | 108      | —              | 0                 | 2   | 10       | 12       | N                            | 0                 | 0   | N        | N        |
| California           | —            | 5                 | 19    | 143      | 366      | 10             | 4                 | 12  | 152      | 116      | —                            | 0                 | 1   | 2        | —        |
| Hawaii               | 2            | 0                 | 3     | 22       | 8        | —              | 0                 | 0   | —        | —        | N                            | 0                 | 0   | N        | N        |
| Oregon†              | 4            | 3                 | 16    | 175      | 122      | 1              | 0                 | 3   | 14       | 7        | —                            | 0                 | 0   | —        | 3        |
| Washington           | 7            | 6                 | 76    | 194      | 203      | —              | 0                 | 0   | —        | —        | —                            | 0                 | 0   | —        | —        |
| American Samoa       | —            | 0                 | 0     | —        | —        | N              | 0                 | 0   | N        | N        | N                            | 0                 | 0   | N        | N        |
| C.N.M.I.             | —            | —                 | —     | —        | —        | —              | —                 | —   | —        | —        | —                            | —                 | —   | —        | —        |
| Guam                 | —            | 0                 | 0     | —        | —        | —              | 0                 | 0   | —        | —        | N                            | 0                 | 0   | N        | N        |
| Puerto Rico          | —            | 0                 | 1     | 1        | —        | —              | 1                 | 3   | 27       | 45       | N                            | 0                 | 0   | N        | N        |
| U.S. Virgin Islands  | —            | 0                 | 0     | —        | —        | N              | 0                 | 0   | N        | N        | N                            | 0                 | 0   | N        | N        |

C.N.M.I.: Commonwealth of Northern Mariana Islands.

U: Unavailable. —: No reported cases. N: Not reportable. Cum: Cumulative year-to-date counts. Med: Median. Max: Maximum.

\* Incidence data for reporting year 2008 and 2009 are provisional.

† Contains data reported through the National Electronic Disease Surveillance System (NEDSS).

**TABLE II. (Continued) Provisional cases of selected notifiable diseases, United States, weeks ending September 5, 2009, and August 30, 2008 (35th week)\***

| Reporting area       | Salmonellosis |                   |       |          |          | Shiga toxin-producing <i>E. coli</i> (STEC)† |                   |     |          |          | Shigellosis  |                   |       |          |          |
|----------------------|---------------|-------------------|-------|----------|----------|--|-------------------|-----|----------|----------|--------------|-------------------|-------|----------|----------|
|                      | Current week  | Previous 52 weeks |       | Cum 2009 | Cum 2008 | Current week                                 | Previous 52 weeks |     | Cum 2009 | Cum 2008 | Current week | Previous 52 weeks |       | Cum 2009 | Cum 2008 |
|                      |               | Med               | Max   |          |          |  | Med               | Max |          |          |              | Med               | Max   |          |          |
| <b>United States</b> | 788           | 900               | 2,323 | 27,342   | 30,111   | 101  | 86                | 255 | 2,573    | 3,214    | 164          | 317               | 1,268 | 9,929    | 12,954   |
| <b>New England</b>   | —             | 30                | 303   | 1,316    | 1,642    | —  | 3                 | 51  | 137      | 176      | —            | 3                 | 31    | 150      | 167      |
| Connecticut          | —             | 0                 | 277   | 277      | 491      | —  | 0                 | 51  | 51       | 47       | —            | 0                 | 26    | 26       | 40       |
| Maine§               | —             | 2                 | 7     | 83       | 103      | —  | 0                 | 3   | 14       | 11       | —            | 0                 | 1     | 2        | 18       |
| Massachusetts        | —             | 20                | 39    | 631      | 813      | —  | 1                 | 6   | 41       | 85       | —            | 2                 | 15    | 101      | 92       |
| New Hampshire        | —             | 3                 | 42    | 198      | 104      | —  | 1                 | 3   | 23       | 14       | —            | 0                 | 3     | 8        | 4        |
| Rhode Island§        | —             | 2                 | 11    | 87       | 67       | —  | 0                 | 1   | —        | 7        | —            | 0                 | 1     | 8        | 10       |
| Vermont§             | —             | 1                 | 5     | 40       | 64       | —  | 0                 | 6   | 8        | 12       | —            | 0                 | 2     | 5        | 3        |
| <b>Mid. Atlantic</b> | 77            | 91                | 182   | 2,952    | 3,812    | 51   | 6                 | 16  | 268      | 338      | 21           | 56                | 79    | 1,878    | 1,647    |
| New Jersey           | —             | 11                | 41    | 226      | 912      | —  | 1                 | 5   | 24       | 103      | —            | 13                | 35    | 391      | 555      |
| New York (Upstate)   | 54            | 24                | 66    | 869      | 866      | 6  | 3                 | 9   | 90       | 109      | 11           | 5                 | 23    | 156      | 432      |
| New York City        | —             | 18                | 49    | 712      | 844      | —  | 1                 | 5   | 39       | 35       | —            | 9                 | 23    | 267      | 529      |
| Pennsylvania         | 23            | 29                | 66    | 1,145    | 1,190    | 45   | 1                 | 5   | 115      | 91       | 10           | 24                | 61    | 1,064    | 131      |
| <b>E.N. Central</b>  | 35            | 90                | 141   | 3,144    | 3,479    | 7  | 12                | 74  | 420      | 509      | 7            | 65                | 132   | 1,841    | 2,483    |
| Illinois             | —             | 25                | 50    | 810      | 1,020    | —  | 1                 | 10  | 65       | 84       | —            | 13                | 25    | 362      | 710      |
| Indiana              | —             | 8                 | 50    | 243      | 404      | —  | 1                 | 7   | 39       | 61       | —            | 1                 | 21    | 38       | 490      |
| Michigan             | 8             | 18                | 29    | 647      | 656      | 2  | 3                 | 43  | 98       | 92       | 3            | 5                 | 24    | 158      | 88       |
| Ohio                 | 27            | 28                | 52    | 1,027    | 878      | 5  | 3                 | 15  | 100      | 120      | 4            | 36                | 80    | 931      | 937      |
| Wisconsin            | —             | 12                | 30    | 417      | 521      | —  | 3                 | 10  | 118      | 152      | —            | 11                | 42    | 352      | 258      |
| <b>W.N. Central</b>  | 39            | 51                | 109   | 1,825    | 1,936    | 11   | 12                | 38  | 494      | 567      | 14           | 15                | 49    | 601      | 636      |
| Iowa                 | —             | 7                 | 16    | 284      | 306      | —  | 2                 | 14  | 116      | 149      | —            | 2                 | 12    | 47       | 114      |
| Kansas               | —             | 6                 | 19    | 225      | 311      | —  | 1                 | 7   | 30       | 31       | —            | 3                 | 11    | 147      | 25       |
| Minnesota            | 15            | 12                | 51    | 439      | 504      | 8  | 2                 | 19  | 148      | 111      | 4            | 2                 | 14    | 58       | 214      |
| Missouri             | 18            | 12                | 31    | 416      | 516      | 3  | 2                 | 10  | 81       | 122      | 8            | 3                 | 40    | 324      | 171      |
| Nebraska§            | 6             | 5                 | 41    | 267      | 163      | —  | 2                 | 6   | 64       | 118      | 2            | 0                 | 3     | 19       | 5        |
| North Dakota         | —             | 0                 | 30    | 40       | 31       | —  | 0                 | 28  | 3        | 1        | —            | 0                 | 9     | 3        | 32       |
| South Dakota         | —             | 3                 | 22    | 154      | 105      | —  | 0                 | 12  | 52       | 35       | —            | 0                 | 1     | 3        | 75       |
| <b>S. Atlantic</b>   | 275           | 262               | 440   | 7,444    | 7,284    | 7  | 13                | 30  | 415      | 569      | 29           | 47                | 85    | 1,558    | 2,179    |
| Delaware             | 1             | 2                 | 8     | 70       | 104      | —  | 0                 | 2   | 10       | 9        | —            | 1                 | 8     | 72       | 7        |
| District of Columbia | —             | 0                 | 5     | 20       | 47       | —  | 0                 | 1   | 1        | 5        | —            | 0                 | 2     | 6        | 15       |
| Florida              | 179           | 110               | 197   | 3,513    | 2,993    | 3  | 3                 | 7   | 112      | 99       | 9            | 8                 | 24    | 304      | 616      |
| Georgia              | 51            | 39                | 96    | 1,408    | 1,423    | 1  | 1                 | 4   | 49       | 65       | 12           | 13                | 30    | 451      | 806      |
| Maryland§            | 15            | 16                | 26    | 483      | 567      | 3  | 2                 | 8   | 58       | 93       | 6            | 6                 | 14    | 250      | 66       |
| North Carolina       | —             | 25                | 104   | 778      | 697      | —  | 2                 | 21  | 74       | 59       | —            | 6                 | 27    | 251      | 99       |
| South Carolina§      | 26            | 14                | 54    | 439      | 655      | —  | 0                 | 3   | 20       | 31       | 2            | 4                 | 14    | 81       | 427      |
| Virginia§            | —             | 20                | 88    | 577      | 654      | —  | 2                 | 16  | 73       | 178      | —            | 5                 | 59    | 137      | 116      |
| West Virginia        | 3             | 4                 | 23    | 156      | 144      | —  | 0                 | 3   | 18       | 30       | —            | 0                 | 3     | 6        | 27       |
| <b>E.S. Central</b>  | 26            | 56                | 140   | 1,758    | 2,147    | 3  | 4                 | 12  | 144      | 187      | 8            | 19                | 58    | 571      | 1,352    |
| Alabama§             | 5             | 15                | 40    | 426      | 610      | —  | 1                 | 4   | 33       | 48       | —            | 4                 | 11    | 97       | 321      |
| Kentucky             | 8             | 10                | 18    | 335      | 298      | 1  | 2                 | 7   | 52       | 59       | 3            | 2                 | 25    | 143      | 207      |
| Mississippi          | —             | 14                | 57    | 509      | 713      | —  | 0                 | 1   | 6        | 4        | —            | 1                 | 4     | 28       | 273      |
| Tennessee§           | 13            | 14                | 62    | 488      | 526      | 2  | 2                 | 5   | 53       | 76       | 5            | 11                | 48    | 303      | 551      |
| <b>W.S. Central</b>  | 164           | 110               | 1,333 | 2,894    | 4,129    | 4  | 4                 | 139 | 96       | 233      | 39           | 60                | 967   | 1,758    | 2,853    |
| Arkansas§            | 24            | 12                | 38    | 400      | 470      | —  | 1                 | 5   | 25       | 34       | 1            | 8                 | 20    | 234      | 368      |
| Louisiana            | 12            | 18                | 43    | 599      | 729      | —  | 0                 | 1   | —        | 7        | 1            | 4                 | 17    | 108      | 487      |
| Oklahoma             | 29            | 14                | 102   | 422      | 477      | 2  | 0                 | 82  | 19       | 22       | 6            | 5                 | 61    | 186      | 83       |
| Texas§               | 99            | 55                | 1,204 | 1,473    | 2,453    | 2  | 2                 | 55  | 52       | 170      | 31           | 42                | 889   | 1,230    | 1,915    |
| <b>Mountain</b>      | 19            | 57                | 107   | 1,903    | 2,250    | 3  | 10                | 40  | 311      | 372      | 10           | 24                | 54    | 788      | 626      |
| Arizona              | 13            | 20                | 45    | 677      | 700      | —  | 1                 | 4   | 50       | 47       | 9            | 16                | 41    | 591      | 307      |
| Colorado             | —             | 13                | 34    | 440      | 501      | —  | 3                 | 18  | 103      | 101      | —            | 2                 | 11    | 62       | 70       |
| Idaho§               | 1             | 4                 | 10    | 128      | 117      | 3  | 2                 | 15  | 58       | 77       | —            | 0                 | 2     | 7        | 8        |
| Montana§             | —             | 2                 | 7     | 73       | 80       | —  | 0                 | 3   | 15       | 27       | —            | 0                 | 5     | 13       | 4        |
| Nevada§              | 4             | 4                 | 13    | 179      | 158      | —  | 0                 | 4   | 20       | 13       | 1            | 1                 | 11    | 47       | 150      |
| New Mexico§          | 1             | 5                 | 25    | 200      | 405      | —  | 0                 | 2   | 19       | 41       | —            | 2                 | 12    | 57       | 60       |
| Utah                 | —             | 6                 | 15    | 163      | 237      | —  | 1                 | 5   | 41       | 56       | —            | 0                 | 3     | 11       | 24       |
| Wyoming§             | —             | 1                 | 6     | 43       | 52       | —  | 0                 | 2   | 5        | 10       | —            | 0                 | 1     | —        | 3        |
| <b>Pacific</b>       | 153           | 126               | 537   | 4,106    | 3,432    | 15   | 9                 | 31  | 288      | 263      | 36           | 27                | 82    | 784      | 1,011    |
| Alaska               | —             | 1                 | 6     | 52       | 41       | —  | 0                 | 1   | —        | 5        | —            | 0                 | 1     | 1        | —        |
| California           | 117           | 94                | 516   | 3,122    | 2,482    | 8  | 5                 | 15  | 156      | 120      | 35           | 20                | 75    | 633      | 876      |
| Hawaii               | 2             | 5                 | 13    | 163      | 181      | —  | 0                 | 1   | 3        | 11       | —            | 0                 | 4     | 24       | 31       |
| Oregon§              | 2             | 8                 | 15    | 274      | 308      | 1  | 1                 | 6   | 41       | 44       | —            | 1                 | 10    | 27       | 50       |
| Washington           | 32            | 12                | 85    | 495      | 420      | 6  | 3                 | 16  | 88       | 83       | 1            | 3                 | 11    | 99       | 54       |
| American Samoa       | —             | 0                 | 1     | —        | 2        | —  | 0                 | 0   | —        | —        | —            | 0                 | 2     | 3        | 1        |
| C.N.M.I.             | —             | —                 | —     | —        | —        | —  | —                 | —   | —        | —        | —            | —                 | —     | —        | —        |
| Guam                 | —             | 0                 | 2     | —        | 10       | —  | 0                 | 0   | —        | —        | —            | 0                 | 1     | —        | 14       |
| Puerto Rico          | 2             | 9                 | 40    | 244      | 454      | 1  | 0                 | 0   | 1        | —        | —            | 0                 | 2     | 7        | 21       |
| U.S. Virgin Islands  | —             | 0                 | 0     | —        | —        | —  | 0                 | 0   | —        | —        | —            | 0                 | 0     | —        | —        |

C.N.M.I.: Commonwealth of Northern Mariana Islands.

U: Unavailable. —: No reported cases. N: Not reportable. Cum: Cumulative year-to-date counts. Med: Median. Max: Maximum.

\* Incidence data for reporting year 2008 and 2009 are provisional.

† Includes *E. coli* O157:H7; Shiga toxin-positive, serogroup non-O157; and Shiga toxin-positive, not serogrouped.

§ Contains data reported through the National Electronic Disease Surveillance System (NEDSS).

TABLE II. (Continued) Provisional cases of selected notifiable diseases, United States, weeks ending September 5, 2009, and August 30, 2008 (35th week)\*

| Reporting area       | Streptococcal diseases, invasive, group A |                   |     |          | <i>Streptococcus pneumoniae</i> , invasive disease, nondrug resistant†<br>Age <5 years |              |                   |     |          |          |
|----------------------|---|-------------------|-----|----------|--|--------------|-------------------|-----|----------|----------|
|                      | Current week                              | Previous 52 weeks |     | Cum 2009 | Cum 2008   | Current week | Previous 52 weeks |     | Cum 2009 | Cum 2008 |
|                      |   | Med               | Max |          |  |              | Med               | Max |          |          |
| <b>United States</b> | 27  | 101               | 239 | 3,822    | 4,087  | 18           | 36                | 122 | 1,172    | 1,221    |
| <b>New England</b>   | —   | 5                 | 28  | 223      | 296  | —            | 1                 | 12  | 41       | 60       |
| Connecticut          | —   | 0                 | 21  | 63       | 83   | —            | 0                 | 11  | —        | —        |
| Maine§               | —   | 0                 | 2   | 13       | 20   | —            | 0                 | 1   | 3        | 1        |
| Massachusetts        | —   | 2                 | 10  | 91       | 140  | —            | 1                 | 4   | 28       | 44       |
| New Hampshire        | —   | 1                 | 4   | 34       | 20   | —            | 0                 | 2   | 8        | 8        |
| Rhode Island§        | —   | 0                 | 2   | 9        | 21   | —            | 0                 | 2   | —        | 7        |
| Vermont§             | —   | 0                 | 3   | 13       | 12   | —            | 0                 | 1   | 2        | —        |
| <b>Mid. Atlantic</b> | 6   | 19                | 43  | 776      | 839  | 3            | 5                 | 33  | 180      | 153      |
| New Jersey           | —   | 3                 | 6   | 103      | 153  | —            | 1                 | 4   | 31       | 46       |
| New York (Upstate)   | 4   | 7                 | 25  | 258      | 261  | 2            | 2                 | 17  | 85       | 68       |
| New York City        | —   | 4                 | 12  | 145      | 151  | 1            | 0                 | 31  | 64       | 39       |
| Pennsylvania         | 2   | 6                 | 18  | 270      | 274  | N            | 0                 | 2   | N        | N        |
| <b>E.N. Central</b>  | 3   | 17                | 42  | 731      | 779  | 3            | 6                 | 18  | 177      | 222      |
| Illinois             | —   | 5                 | 12  | 204      | 210  | —            | 1                 | 5   | 23       | 63       |
| Indiana              | —   | 3                 | 23  | 116      | 102  | —            | 0                 | 13  | 25       | 24       |
| Michigan             | —   | 3                 | 11  | 119      | 133  | —            | 1                 | 5   | 47       | 57       |
| Ohio                 | 3   | 4                 | 13  | 185      | 214  | 3            | 1                 | 6   | 52       | 41       |
| Wisconsin            | —   | 2                 | 10  | 107      | 120  | —            | 1                 | 4   | 30       | 37       |
| <b>W.N. Central</b>  | 1   | 6                 | 37  | 318      | 311  | 3            | 2                 | 11  | 107      | 66       |
| Iowa                 | —   | 0                 | 0   | —        | —  | —            | 0                 | 0   | —        | —        |
| Kansas               | —   | 1                 | 5   | 37       | 32   | N            | 0                 | 1   | N        | N        |
| Minnesota            | 1   | 0                 | 34  | 146      | 150  | 2            | 0                 | 10  | 60       | 18       |
| Missouri             | —   | 1                 | 8   | 69       | 72   | —            | 0                 | 4   | 29       | 29       |
| Nebraska§            | —   | 1                 | 3   | 35       | 31   | 1            | 0                 | 1   | 8        | 7        |
| North Dakota         | —   | 0                 | 4   | 11       | 8  | —            | 0                 | 3   | 4        | 6        |
| South Dakota         | —   | 0                 | 3   | 20       | 18   | —            | 0                 | 2   | 6        | 6        |
| <b>S. Atlantic</b>   | 12  | 22                | 48  | 869      | 832  | 2            | 6                 | 16  | 216      | 239      |
| Delaware             | —   | 0                 | 1   | 9        | 6  | —            | 0                 | 0   | —        | —        |
| District of Columbia | —   | 0                 | 3   | 11       | 12   | N            | 0                 | 0   | N        | N        |
| Florida              | 2   | 6                 | 12  | 212      | 189  | —            | 1                 | 6   | 49       | 46       |
| Georgia              | 5   | 5                 | 13  | 206      | 185  | 1            | 2                 | 6   | 54       | 63       |
| Maryland§            | 4   | 3                 | 12  | 138      | 145  | 1            | 1                 | 4   | 51       | 46       |
| North Carolina       | —   | 2                 | 12  | 81       | 104  | N            | 0                 | 0   | N        | N        |
| South Carolina§      | 1   | 1                 | 5   | 53       | 51   | —            | 1                 | 6   | 32       | 42       |
| Virginia§            | —   | 3                 | 9   | 125      | 108  | —            | 0                 | 4   | 18       | 37       |
| West Virginia        | —   | 1                 | 4   | 34       | 32   | —            | 0                 | 3   | 12       | 5        |
| <b>E.S. Central</b>  | 1   | 4                 | 10  | 147      | 144  | 2            | 2                 | 7   | 61       | 63       |
| Alabama§             | N   | 0                 | 0   | N        | N  | N            | 0                 | 0   | N        | N        |
| Kentucky             | —   | 1                 | 5   | 28       | 31   | N            | 0                 | 0   | N        | N        |
| Mississippi          | N   | 0                 | 0   | N        | N  | —            | 0                 | 2   | 14       | 8        |
| Tennessee§           | 1   | 3                 | 9   | 119      | 113  | 2            | 1                 | 6   | 47       | 55       |
| <b>W.S. Central</b>  | 3   | 9                 | 79  | 318      | 359  | 4            | 6                 | 46  | 198      | 189      |
| Arkansas§            | —   | 0                 | 2   | 14       | 8  | —            | 0                 | 4   | 20       | 11       |
| Louisiana            | —   | 0                 | 3   | 11       | 14   | —            | 0                 | 3   | 13       | 11       |
| Oklahoma             | —   | 3                 | 20  | 108      | 81   | 1            | 1                 | 7   | 40       | 49       |
| Texas§               | 3   | 5                 | 59  | 185      | 256  | 3            | 4                 | 34  | 125      | 118      |
| <b>Mountain</b>      | 1   | 10                | 22  | 329      | 422  | 1            | 4                 | 16  | 169      | 193      |
| Arizona              | 1   | 3                 | 7   | 110      | 146  | 1            | 2                 | 10  | 88       | 89       |
| Colorado             | —   | 3                 | 9   | 107      | 106  | —            | 1                 | 4   | 32       | 42       |
| Idaho§               | —   | 0                 | 2   | 7        | 12   | —            | 0                 | 2   | 7        | 3        |
| Montana§             | N   | 0                 | 0   | N        | N  | N            | 0                 | 0   | N        | N        |
| Nevada§              | —   | 0                 | 1   | 5        | 8  | —            | 0                 | 1   | —        | 3        |
| New Mexico§          | —   | 2                 | 7   | 59       | 103  | —            | 0                 | 4   | 15       | 27       |
| Utah                 | —   | 1                 | 6   | 40       | 41   | —            | 0                 | 5   | 27       | 28       |
| Wyoming§             | —   | 0                 | 1   | 1        | 6  | —            | 0                 | 1   | —        | 1        |
| <b>Pacific</b>       | —   | 3                 | 9   | 111      | 105  | —            | 0                 | 4   | 23       | 36       |
| Alaska               | —   | 1                 | 3   | 21       | 26   | —            | 0                 | 3   | 17       | 23       |
| California           | N   | 0                 | 0   | N        | N  | N            | 0                 | 0   | N        | N        |
| Hawaii               | —   | 3                 | 8   | 90       | 79   | —            | 0                 | 2   | 6        | 13       |
| Oregon§              | N   | 0                 | 0   | N        | N  | N            | 0                 | 0   | N        | N        |
| Washington           | N   | 0                 | 0   | N        | N  | N            | 0                 | 0   | N        | N        |
| American Samoa       | —   | 0                 | 0   | —        | 30   | N            | 0                 | 0   | N        | N        |
| C.N.M.I.             | —   | —                 | —   | —        | —  | —            | —                 | —   | —        | —        |
| Guam                 | —   | 0                 | 0   | —        | —  | —            | 0                 | 0   | —        | —        |
| Puerto Rico          | N   | 0                 | 0   | N        | N  | N            | 0                 | 0   | N        | N        |
| U.S. Virgin Islands  | —   | 0                 | 0   | —        | —  | N            | 0                 | 0   | N        | N        |

C.N.M.I.: Commonwealth of Northern Mariana Islands.

U: Unavailable. —: No reported cases. N: Not reportable. Cum: Cumulative year-to-date counts. Med: Median. Max: Maximum.

\* Incidence data for reporting year 2008 and 2009 are provisional.

† Includes cases of invasive pneumococcal disease, in children aged <5 years, caused by *S. pneumoniae*, which is susceptible or for which susceptibility testing is not available (NNDS event code 11717).

§ Contains data reported through the National Electronic Disease Surveillance System (NEDSS).



TABLE II. (Continued) Provisional cases of selected notifiable diseases, United States, weeks ending September 5, 2009, and August 30, 2008 (35th week)\*

| Reporting area       | <i>Streptococcus pneumoniae</i> , invasive disease, drug resistant† |                   |     |          |               |              |                   |    |          |          | Syphilis, primary and secondary |                   |     |          |          |
|----------------------|---|-------------------|-----|----------|---------------|--------------|-------------------|----|----------|----------|---------------------------------|-------------------|-----|----------|----------|
|                      | All ages  |                   |     |          | Aged <5 years |              |                   |    |          |          |                                 |                   |     |          |          |
|                      | Current week  | Previous 52 weeks |     | Cum 2009 | Cum 2008      | Current week | Previous 52 weeks |    | Cum 2009 | Cum 2008 | Current week                    | Previous 52 weeks |     | Cum 2009 | Cum 2008 |
|                      | Med   | Max               |     |          |               | Med          | Max               |    |          |          | Med                             | Max               |     |          |          |
| <b>United States</b> | 23  | 60                | 276 | 1,984    | 2,203         | 2            | 9                 | 21 | 307      | 336      | 102                             | 262               | 452 | 8,746    | 8,489    |
| <b>New England</b>   | —   | 1                 | 48  | 34       | 46            | —            | 0                 | 5  | 3        | 7        | 2                               | 5                 | 15  | 225      | 216      |
| Connecticut          | —   | 0                 | 48  | —        | —             | —            | 0                 | 5  | —        | —        | —                               | 1                 | 5   | 41       | 21       |
| Maine§               | —   | 0                 | 2   | 9        | 15            | —            | 0                 | 1  | 1        | 1        | —                               | 0                 | 1   | 1        | 9        |
| Massachusetts        | —   | 0                 | 1   | 2        | —             | —            | 0                 | 1  | 2        | —        | 2                               | 4                 | 11  | 159      | 153      |
| New Hampshire        | —   | 0                 | 3   | 5        | —             | —            | 0                 | 0  | —        | —        | —                               | 0                 | 2   | 12       | 13       |
| Rhode Island§        | —   | 0                 | 6   | 7        | 18            | —            | 0                 | 1  | —        | 4        | —                               | 0                 | 5   | 12       | 14       |
| Vermont§             | —   | 0                 | 2   | 11       | 13            | —            | 0                 | 0  | —        | 2        | —                               | 0                 | 2   | —        | 6        |
| <b>Mid. Atlantic</b> | 1   | 3                 | 14  | 117      | 228           | —            | 0                 | 3  | 20       | 20       | 39                              | 35                | 51  | 1,255    | 1,122    |
| New Jersey           | —   | 0                 | 0   | —        | —             | —            | 0                 | 0  | —        | —        | 2                               | 4                 | 13  | 153      | 151      |
| New York (Upstate)   | 1   | 1                 | 10  | 52       | 48            | —            | 0                 | 2  | 10       | 6        | 3                               | 2                 | 8   | 85       | 93       |
| New York City        | —   | 0                 | 4   | 3        | 92            | —            | 0                 | 2  | —        | 1        | 29                              | 23                | 40  | 786      | 693      |
| Pennsylvania         | —   | 1                 | 8   | 62       | 88            | —            | 0                 | 2  | 10       | 13       | 5                               | 6                 | 12  | 231      | 185      |
| <b>E.N. Central</b>  | 2   | 11                | 41  | 439      | 471           | —            | 1                 | 7  | 63       | 64       | 20                              | 23                | 44  | 703      | 783      |
| Illinois             | N   | 0                 | 0   | N        | N             | N            | 0                 | 0  | N        | N        | 9                               | 7                 | 19  | 203      | 311      |
| Indiana              | —   | 3                 | 32  | 151      | 161           | —            | 0                 | 6  | 21       | 20       | 3                               | 2                 | 10  | 108      | 96       |
| Michigan             | —   | 0                 | 2   | 19       | 17            | —            | 0                 | 1  | 2        | 2        | 8                               | 3                 | 18  | 165      | 129      |
| Ohio                 | 2   | 7                 | 18  | 269      | 293           | —            | 1                 | 4  | 40       | 42       | —                               | 6                 | 17  | 197      | 208      |
| Wisconsin            | —   | 0                 | 0   | —        | —             | —            | 0                 | 0  | —        | —        | —                               | 1                 | 4   | 30       | 39       |
| <b>W.N. Central</b>  | 1   | 2                 | 161 | 94       | 155           | —            | 0                 | 3  | 20       | 31       | 1                               | 6                 | 11  | 208      | 284      |
| Iowa                 | —   | 0                 | 0   | —        | —             | —            | 0                 | 0  | —        | —        | —                               | 0                 | 2   | 16       | 13       |
| Kansas               | —   | 1                 | 5   | 39       | 58            | —            | 0                 | 2  | 13       | 3        | 1                               | 0                 | 3   | 19       | 23       |
| Minnesota            | —   | 0                 | 156 | —        | 23            | —            | 0                 | 3  | —        | 23       | —                               | 2                 | 6   | 40       | 71       |
| Missouri             | 1   | 1                 | 5   | 43       | 67            | —            | 0                 | 1  | 5        | 2        | —                               | 3                 | 6   | 115      | 167      |
| Nebraska§            | —   | 0                 | 0   | —        | —             | —            | 0                 | 0  | —        | —        | —                               | 0                 | 3   | 14       | 10       |
| North Dakota         | —   | 0                 | 3   | 10       | 2             | —            | 0                 | 0  | —        | —        | —                               | 0                 | 1   | 3        | —        |
| South Dakota         | —   | 0                 | 2   | 2        | 5             | —            | 0                 | 2  | 2        | 3        | —                               | 0                 | 1   | 1        | —        |
| <b>S. Atlantic</b>   | 17  | 26                | 53  | 946      | 902           | 2            | 4                 | 14 | 140      | 147      | 14                              | 64                | 262 | 2,154    | 1,828    |
| Delaware             | —   | 0                 | 2   | 15       | 3             | —            | 0                 | 0  | —        | —        | —                               | 0                 | 3   | 22       | 10       |
| District of Columbia | N   | 0                 | 0   | N        | N             | N            | 0                 | 0  | N        | N        | 2                               | 3                 | 9   | 116      | 94       |
| Florida              | 10  | 15                | 36  | 550      | 513           | —            | 2                 | 13 | 86       | 96       | 3                               | 20                | 31  | 658      | 692      |
| Georgia              | 5   | 8                 | 25  | 290      | 300           | 2            | 1                 | 5  | 47       | 43       | —                               | 14                | 227 | 488      | 402      |
| Maryland§            | —   | 0                 | 1   | 4        | 4             | —            | 0                 | 0  | —        | 1        | 9                               | 6                 | 16  | 211      | 227      |
| North Carolina       | N   | 0                 | 0   | N        | N             | N            | 0                 | 0  | N        | N        | —                               | 9                 | 21  | 361      | 171      |
| South Carolina§      | —   | 0                 | 0   | —        | —             | —            | 0                 | 0  | —        | —        | —                               | 2                 | 6   | 78       | 57       |
| Virginia§            | N   | 0                 | 0   | N        | N             | N            | 0                 | 0  | N        | N        | —                               | 7                 | 16  | 216      | 167      |
| West Virginia        | 2   | 2                 | 13  | 87       | 82            | —            | 0                 | 3  | 7        | 7        | —                               | 0                 | 2   | 4        | 8        |
| <b>E.S. Central</b>  | 1   | 5                 | 25  | 196      | 233           | —            | 1                 | 3  | 29       | 42       | 12                              | 22                | 36  | 774      | 723      |
| Alabama§             | N   | 0                 | 0   | N        | N             | N            | 0                 | 0  | N        | N        | —                               | 8                 | 17  | 288      | 299      |
| Kentucky             | —   | 1                 | 5   | 55       | 56            | —            | 0                 | 2  | 7        | 9        | 3                               | 1                 | 10  | 46       | 58       |
| Mississippi          | —   | 0                 | 3   | 3        | 28            | —            | 0                 | 1  | 2        | 8        | 3                               | 4                 | 18  | 152      | 103      |
| Tennessee§           | 1   | 3                 | 23  | 138      | 149           | —            | 0                 | 3  | 20       | 25       | 6                               | 8                 | 19  | 288      | 263      |
| <b>W.S. Central</b>  | 1   | 2                 | 6   | 72       | 74            | —            | 0                 | 3  | 14       | 12       | 7                               | 49                | 80  | 1,640    | 1,452    |
| Arkansas§            | 1   | 1                 | 5   | 40       | 13            | —            | 0                 | 3  | 9        | 3        | 6                               | 4                 | 35  | 151      | 110      |
| Louisiana            | —   | 1                 | 5   | 32       | 61            | —            | 0                 | 1  | 5        | 9        | —                               | 11                | 40  | 303      | 403      |
| Oklahoma             | N   | 0                 | 0   | N        | N             | N            | 0                 | 0  | N        | N        | 1                               | 1                 | 7   | 42       | 51       |
| Texas§               | —   | 0                 | 0   | —        | —             | —            | 0                 | 0  | —        | —        | —                               | 32                | 48  | 1,144    | 888      |
| <b>Mountain</b>      | —   | 2                 | 7   | 84       | 92            | —            | 0                 | 3  | 17       | 11       | 2                               | 9                 | 18  | 293      | 434      |
| Arizona              | —   | 0                 | 0   | —        | —             | —            | 0                 | 0  | —        | —        | 1                               | 4                 | 9   | 132      | 223      |
| Colorado             | —   | 0                 | 0   | —        | —             | —            | 0                 | 0  | —        | —        | —                               | 1                 | 4   | 58       | 104      |
| Idaho§               | N   | 0                 | 1   | N        | N             | N            | 0                 | 1  | N        | N        | —                               | 0                 | 2   | 3        | 2        |
| Montana§             | —   | 0                 | 1   | —        | —             | —            | 0                 | 0  | —        | —        | —                               | 0                 | 7   | —        | —        |
| Nevada§              | —   | 1                 | 4   | 33       | 44            | —            | 0                 | 2  | 7        | 5        | 1                               | 1                 | 7   | 65       | 56       |
| New Mexico§          | —   | 0                 | 0   | —        | —             | —            | 0                 | 0  | —        | —        | —                               | 1                 | 5   | 33       | 30       |
| Utah                 | —   | 1                 | 6   | 42       | 47            | —            | 0                 | 3  | 9        | 6        | —                               | 0                 | 2   | —        | 16       |
| Wyoming§             | —   | 0                 | 2   | 9        | 1             | —            | 0                 | 1  | 1        | —        | —                               | 0                 | 1   | 2        | 3        |
| <b>Pacific</b>       | —   | 0                 | 1   | 2        | 2             | —            | 0                 | 1  | 1        | 2        | 5                               | 44                | 66  | 1,494    | 1,647    |
| Alaska               | —   | 0                 | 0   | —        | —             | —            | 0                 | 0  | —        | —        | —                               | 0                 | 0   | —        | 1        |
| California           | N   | 0                 | 0   | N        | N             | N            | 0                 | 0  | N        | N        | 3                               | 40                | 59  | 1,360    | 1,488    |
| Hawaii               | —   | 0                 | 1   | 2        | 2             | —            | 0                 | 1  | 1        | 2        | —                               | 0                 | 3   | 19       | 16       |
| Oregon§              | N   | 0                 | 0   | N        | N             | N            | 0                 | 0  | N        | N        | 1                               | 1                 | 4   | 32       | 12       |
| Washington           | N   | 0                 | 0   | N        | N             | N            | 0                 | 0  | N        | N        | 1                               | 2                 | 7   | 83       | 130      |
| American Samoa       | N   | 0                 | 0   | N        | N             | N            | 0                 | 0  | N        | N        | —                               | 0                 | 0   | —        | —        |
| C.N.M.I.             | —   | —                 | —   | —        | —             | —            | —                 | —  | —        | —        | —                               | —                 | —   | —        | —        |
| Guam                 | —   | 0                 | 0   | —        | —             | —            | 0                 | 0  | —        | —        | —                               | 0                 | 0   | —        | —        |
| Puerto Rico          | —   | 0                 | 0   | —        | —             | —            | 0                 | 0  | —        | —        | —                               | 3                 | 16  | 142      | 101      |
| U.S. Virgin Islands  | —   | 0                 | 0   | —        | —             | —            | 0                 | 0  | —        | —        | —                               | 0                 | 0   | —        | —        |

C.N.M.I.: Commonwealth of Northern Mariana Islands.

U: Unavailable. —: No reported cases. N: Not reportable. Cum: Cumulative year-to-date counts. Med: Median. Max: Maximum.

\* Incidence data for reporting year 2008 and 2009 are provisional.

† Includes cases of invasive pneumococcal disease caused by drug-resistant *S. pneumoniae* (DRSP) (NNDSS event code 11720).

§ Contains data reported through the National Electronic Disease Surveillance System (NEDSS).

TABLE II. (Continued) Provisional cases of selected notifiable diseases, United States, weeks ending September 5, 2009, and August 30, 2008 (35th week)\*

| Reporting area       | West Nile virus disease† |                   |       |          |          |               |                   |    |          |          |                   |                   |    |          |          |
|----------------------|--------------------------|-------------------|-------|----------|----------|---------------|-------------------|----|----------|----------|-------------------|-------------------|----|----------|----------|
|                      | Varicella (chickenpox)   |                   |       |          |          | Neuroinvasive |                   |    |          |          | Nonneuroinvasive§ |                   |    |          |          |
|                      | Current week             | Previous 52 weeks |       | Cum 2009 | Cum 2008 | Current week  | Previous 52 weeks |    | Cum 2009 | Cum 2008 | Current week      | Previous 52 weeks |    | Cum 2009 | Cum 2008 |
|                      | Med                      | Max               |       |          |          | Med           | Max               |    |          |          | Med               | Max               |    |          |          |
| <b>United States</b> | 60                       | 451               | 1,035 | 12,161   | 20,567   | —             | 1                 | 70 | 98       | 417      | —                 | 0                 | 55 | 97       | 483      |
| <b>New England</b>   | —                        | 8                 | 46    | 194      | 1,139    | —             | 0                 | 2  | —        | 3        | —                 | 0                 | 0  | —        | 3        |
| Connecticut          | —                        | 0                 | 21    | —        | 587      | —             | 0                 | 2  | —        | 3        | —                 | 0                 | 0  | —        | 3        |
| Maine¶               | —                        | 0                 | 11    | 5        | 175      | —             | 0                 | 0  | —        | —        | —                 | 0                 | 0  | —        | —        |
| Massachusetts        | —                        | 0                 | 1     | 1        | —        | —             | 0                 | 1  | —        | —        | —                 | 0                 | 0  | —        | —        |
| New Hampshire        | —                        | 4                 | 11    | 141      | 181      | —             | 0                 | 0  | —        | —        | —                 | 0                 | 0  | —        | —        |
| Rhode Island¶        | —                        | 0                 | 1     | 4        | —        | —             | 0                 | 1  | —        | —        | —                 | 0                 | 0  | —        | —        |
| Vermont¶             | —                        | 2                 | 17    | 43       | 196      | —             | 0                 | 0  | —        | —        | —                 | 0                 | 0  | —        | —        |
| <b>Mid. Atlantic</b> | 15                       | 38                | 58    | 1,049    | 1,637    | —             | 0                 | 6  | 2        | 28       | —                 | 0                 | 4  | —        | 11       |
| New Jersey           | N                        | 0                 | 0     | N        | N        | —             | 0                 | 2  | —        | 2        | —                 | 0                 | 1  | —        | 3        |
| New York (Upstate)   | N                        | 0                 | 0     | N        | N        | —             | 0                 | 3  | 1        | 13       | —                 | 0                 | 2  | —        | 3        |
| New York City        | —                        | 0                 | 0     | —        | —        | —             | 0                 | 2  | —        | 5        | —                 | 0                 | 1  | —        | 4        |
| Pennsylvania         | 15                       | 38                | 58    | 1,049    | 1,637    | —             | 0                 | 1  | 1        | 8        | —                 | 0                 | 1  | —        | 1        |
| <b>E.N. Central</b>  | 25                       | 154               | 254   | 4,184    | 4,977    | —             | 0                 | 8  | 2        | 15       | —                 | 0                 | 3  | 1        | 12       |
| Illinois             | —                        | 33                | 73    | 835      | 720      | —             | 0                 | 4  | 1        | 2        | —                 | 0                 | 1  | —        | 6        |
| Indiana              | —                        | 2                 | 19    | 207      | —        | —             | 0                 | 1  | 1        | 2        | —                 | 0                 | 1  | —        | —        |
| Michigan             | 1                        | 48                | 90    | 1,314    | 2,094    | —             | 0                 | 4  | —        | 3        | —                 | 0                 | 2  | —        | 2        |
| Ohio                 | 24                       | 42                | 91    | 1,444    | 1,598    | —             | 0                 | 3  | —        | 6        | —                 | 0                 | 1  | 1        | —        |
| Wisconsin            | —                        | 14                | 55    | 384      | 565      | —             | 0                 | 2  | —        | 2        | —                 | 0                 | 0  | —        | 4        |
| <b>W.N. Central</b>  | 4                        | 22                | 114   | 669      | 811      | —             | 0                 | 6  | 5        | 33       | —                 | 0                 | 6  | 20       | 108      |
| Iowa                 | N                        | 0                 | 0     | N        | N        | —             | 0                 | 1  | —        | 2        | —                 | 0                 | 1  | 1        | 2        |
| Kansas               | —                        | 5                 | 22    | 176      | 318      | —             | 0                 | 2  | —        | 8        | —                 | 0                 | 2  | 4        | 12       |
| Minnesota            | —                        | 0                 | 0     | —        | —        | —             | 0                 | 0  | —        | 2        | —                 | 0                 | 2  | 1        | 6        |
| Missouri             | 4                        | 10                | 51    | 436      | 459      | —             | 0                 | 3  | 1        | 5        | —                 | 0                 | 1  | —        | 2        |
| Nebraska¶            | N                        | 0                 | 0     | N        | N        | —             | 0                 | 1  | 1        | 3        | —                 | 0                 | 3  | 6        | 26       |
| North Dakota         | —                        | 0                 | 108   | 57       | —        | —             | 0                 | 0  | —        | 2        | —                 | 0                 | 0  | —        | 35       |
| South Dakota         | —                        | 0                 | 4     | —        | 34       | —             | 0                 | 2  | 3        | 11       | —                 | 0                 | 2  | 8        | 25       |
| <b>S. Atlantic</b>   | 15                       | 57                | 146   | 1,433    | 3,353    | —             | 0                 | 2  | 3        | 13       | —                 | 0                 | 3  | —        | 13       |
| Delaware             | —                        | 0                 | 4     | 8        | 30       | —             | 0                 | 0  | —        | —        | —                 | 0                 | 0  | —        | 1        |
| District of Columbia | —                        | 0                 | 3     | 8        | 18       | —             | 0                 | 2  | —        | 2        | —                 | 0                 | 1  | —        | 1        |
| Florida              | 9                        | 28                | 67    | 927      | 1,181    | —             | 0                 | 0  | —        | 3        | —                 | 0                 | 0  | —        | —        |
| Georgia              | N                        | 0                 | 0     | N        | N        | —             | 0                 | 1  | 2        | 2        | —                 | 0                 | 1  | —        | 3        |
| Maryland¶            | N                        | 0                 | 0     | N        | N        | —             | 0                 | 2  | —        | 3        | —                 | 0                 | 2  | —        | 5        |
| North Carolina       | N                        | 0                 | 0     | N        | N        | —             | 0                 | 0  | —        | 2        | —                 | 0                 | 0  | —        | 1        |
| South Carolina¶      | —                        | 4                 | 54    | 154      | 590      | —             | 0                 | 1  | 1        | —        | —                 | 0                 | 0  | —        | 1        |
| Virginia¶            | —                        | 0                 | 119   | 28       | 1,027    | —             | 0                 | 0  | —        | —        | —                 | 0                 | 0  | —        | 1        |
| West Virginia        | 6                        | 9                 | 32    | 308      | 507      | —             | 0                 | 0  | —        | 1        | —                 | 0                 | 0  | —        | —        |
| <b>E.S. Central</b>  | —                        | 12                | 28    | 358      | 861      | —             | 0                 | 5  | 17       | 33       | —                 | 0                 | 5  | 10       | 45       |
| Alabama¶             | —                        | 12                | 28    | 356      | 851      | —             | 0                 | 1  | —        | 9        | —                 | 0                 | 2  | —        | 5        |
| Kentucky             | N                        | 0                 | 0     | N        | N        | —             | 0                 | 1  | —        | —        | —                 | 0                 | 0  | —        | —        |
| Mississippi          | —                        | 0                 | 1     | 2        | 10       | —             | 0                 | 5  | 16       | 16       | —                 | 0                 | 5  | 9        | 33       |
| Tennessee¶           | N                        | 0                 | 0     | N        | N        | —             | 0                 | 2  | 1        | 8        | —                 | 0                 | 1  | 1        | 7        |
| <b>W.S. Central</b>  | 1                        | 94                | 747   | 3,259    | 6,200    | —             | 0                 | 7  | 25       | 48       | —                 | 0                 | 5  | 9        | 42       |
| Arkansas¶            | —                        | 3                 | 47    | 96       | 491      | —             | 0                 | 1  | 1        | 6        | —                 | 0                 | 0  | —        | 2        |
| Louisiana            | 1                        | 1                 | 7     | 76       | 56       | —             | 0                 | 3  | 5        | 12       | —                 | 0                 | 5  | 5        | 16       |
| Oklahoma             | N                        | 0                 | 0     | N        | N        | —             | 0                 | 1  | 2        | 2        | —                 | 0                 | 0  | —        | 5        |
| Texas¶               | —                        | 86                | 721   | 3,087    | 5,653    | —             | 0                 | 6  | 17       | 28       | —                 | 0                 | 2  | 4        | 19       |
| <b>Mountain</b>      | —                        | 33                | 83    | 936      | 1,499    | —             | 0                 | 12 | 32       | 56       | —                 | 0                 | 17 | 42       | 131      |
| Arizona              | —                        | 0                 | 0     | —        | —        | —             | 0                 | 7  | 9        | 30       | —                 | 0                 | 8  | 3        | 21       |
| Colorado             | —                        | 13                | 44    | 367      | 608      | —             | 0                 | 3  | 9        | 12       | —                 | 0                 | 9  | 24       | 42       |
| Idaho¶               | N                        | 0                 | 0     | N        | N        | —             | 0                 | 1  | 2        | 3        | —                 | 0                 | 2  | 6        | 32       |
| Montana¶             | —                        | 2                 | 20    | 105      | 229      | —             | 0                 | 1  | 2        | —        | —                 | 0                 | 1  | 1        | 5        |
| Nevada¶              | N                        | 0                 | 0     | N        | N        | —             | 0                 | 2  | 7        | 5        | —                 | 0                 | 1  | 5        | 6        |
| New Mexico¶          | —                        | 2                 | 20    | 134      | 160      | —             | 0                 | 1  | 2        | 3        | —                 | 0                 | 1  | 1        | 1        |
| Utah                 | —                        | 13                | 31    | 330      | 492      | —             | 0                 | 1  | —        | 3        | —                 | 0                 | 1  | —        | 18       |
| Wyoming¶             | —                        | 0                 | 1     | —        | 10       | —             | 0                 | 1  | 1        | —        | —                 | 0                 | 2  | 2        | 6        |
| <b>Pacific</b>       | —                        | 2                 | 7     | 79       | 90       | —             | 0                 | 34 | 12       | 188      | —                 | 0                 | 15 | 15       | 118      |
| Alaska               | —                        | 1                 | 6     | 49       | 44       | —             | 0                 | 0  | —        | —        | —                 | 0                 | 0  | —        | —        |
| California           | —                        | 0                 | 0     | —        | —        | —             | 0                 | 33 | 12       | 184      | —                 | 0                 | 15 | 14       | 104      |
| Hawaii               | —                        | 1                 | 4     | 30       | 46       | —             | 0                 | 0  | —        | —        | —                 | 0                 | 0  | —        | —        |
| Oregon¶              | N                        | 0                 | 0     | N        | N        | —             | 0                 | 1  | —        | 2        | —                 | 0                 | 0  | —        | 13       |
| Washington           | N                        | 0                 | 0     | N        | N        | —             | 0                 | 0  | —        | 2        | —                 | 0                 | 1  | 1        | 1        |
| American Samoa       | N                        | 0                 | 0     | N        | N        | —             | 0                 | 0  | —        | —        | —                 | 0                 | 0  | —        | —        |
| C.N.M.I.             | —                        | —                 | —     | —        | —        | —             | —                 | —  | —        | —        | —                 | —                 | —  | —        | —        |
| Guam                 | —                        | 2                 | 3     | —        | 55       | —             | 0                 | 0  | —        | —        | —                 | 0                 | 0  | —        | —        |
| Puerto Rico          | 1                        | 8                 | 23    | 317      | 433      | —             | 0                 | 0  | —        | —        | —                 | 0                 | 0  | —        | —        |
| U.S. Virgin Islands  | —                        | 0                 | 0     | —        | —        | —             | 0                 | 0  | —        | —        | —                 | 0                 | 0  | —        | —        |

C.N.M.I.: Commonwealth of Northern Mariana Islands.

U: Unavailable. —: No reported cases. N: Not reportable. Cum: Cumulative year-to-date counts. Med: Median. Max: Maximum.

\* Incidence data for reporting year 2008 and 2009 are provisional. Data for HIV/AIDS, AIDS, and TB, when available, are displayed in Table IV, which appears quarterly.

† Updated weekly from reports to the Division of Vector-Borne Infectious Diseases, National Center for Zoonotic, Vector-Borne, and Enteric Diseases (ArboNET Surveillance).

§ Data for California serogroup, eastern equine, Powassan, St. Louis, and western equine diseases are available in Table I.

¶ Not reportable in all states. Data from states where the condition is not reportable are excluded from this table, except starting in 2007 for the domestic arboviral diseases and influenza-associated pediatric mortality, and in 2003 for SARS-CoV. Reporting exceptions are available at <http://www.cdc.gov/epo/dphsi/phs/infdis.htm>.

¶ Contains data reported through the National Electronic Disease Surveillance System (NEDSS).

TABLE III. Deaths in 122 U.S. cities,\* week ending September 5, 2009 (35th week)

| Reporting area       | All causes, by age (years) |       |       |       |      |    |            | Reporting area       | All causes, by age (years) |              |              |            |            |            |            |
|----------------------|----------------------------|-------|-------|-------|------|----|------------|----------------------|----------------------------|--------------|--------------|------------|------------|------------|------------|
|                      | All Ages                   | ≥65   | 45-64 | 25-44 | 1-24 | <1 | P&I† Total |                      | All Ages                   | ≥65          | 45-64        | 25-44      | 1-24       | <1         | P&I† Total |
| <b>New England</b>   | 444                        | 291   | 100   | 34    | 4    | 15 | 30         | <b>S. Atlantic</b>   | 1,181                      | 711          | 300          | 100        | 35         | 35         | 55         |
| Boston, MA           | 106                        | 60    | 29    | 7     | 2    | 8  | 4          | Atlanta, GA          | 107                        | 63           | 23           | 11         | 4          | 6          | 4          |
| Bridgeport, CT       | 23                         | 17    | 2     | 4     | —    | —  | 4          | Baltimore, MD        | 132                        | 72           | 32           | 20         | 3          | 5          | 5          |
| Cambridge, MA        | 15                         | 11    | 4     | —     | —    | —  | 1          | Charlotte, NC        | 107                        | 64           | 29           | 9          | 2          | 3          | 7          |
| Fall River, MA       | 21                         | 17    | 3     | 1     | —    | —  | 1          | Jacksonville, FL     | 120                        | 71           | 35           | 9          | 3          | 2          | 2          |
| Hartford, CT         | 49                         | 31    | 12    | 5     | —    | 1  | 2          | Miami, FL            | 73                         | 51           | 12           | 7          | 2          | 1          | 8          |
| Lowell, MA           | 22                         | 18    | 2     | 2     | —    | —  | 1          | Norfolk, VA          | 51                         | 31           | 15           | —          | 2          | 3          | 4          |
| Lynn, MA             | 4                          | 2     | 2     | —     | —    | —  | —          | Richmond, VA         | 53                         | 26           | 19           | 7          | 1          | —          | 2          |
| New Bedford, MA      | 20                         | 16    | 1     | 3     | —    | —  | 1          | Savannah, GA         | 67                         | 41           | 19           | 4          | 1          | 2          | 4          |
| New Haven, CT        | 20                         | 13    | 5     | 2     | —    | —  | 5          | St. Petersburg, FL   | 54                         | 31           | 13           | 4          | 4          | 2          | 5          |
| Providence, RI       | 63                         | 41    | 15    | 5     | —    | 2  | 3          | Tampa, FL            | 209                        | 127          | 51           | 17         | 8          | 6          | 11         |
| Somerville, MA       | 4                          | 1     | 3     | —     | —    | —  | —          | Washington, D.C.     | 201                        | 129          | 51           | 11         | 5          | 5          | 1          |
| Springfield, MA      | 29                         | 14    | 9     | 3     | 1    | 2  | 1          | Wilmington, DE       | 7                          | 5            | 1            | 1          | —          | —          | 2          |
| Waterbury, CT        | 26                         | 19    | 5     | 2     | —    | —  | 1          | <b>E.S. Central</b>  | 771                        | 487          | 199          | 50         | 17         | 18         | 52         |
| Worcester, MA        | 42                         | 31    | 8     | —     | 1    | 2  | 6          | Birmingham, AL       | 122                        | 74           | 37           | 8          | 1          | 2          | 9          |
| <b>Mid. Atlantic</b> | 1,747                      | 1,193 | 380   | 113   | 31   | 30 | 59         | Chattanooga, TN      | 75                         | 53           | 17           | 3          | 2          | —          | 1          |
| Albany, NY           | 46                         | 29    | 12    | 3     | 1    | 1  | 1          | Knoxville, TN        | 109                        | 76           | 24           | 6          | 1          | 2          | 6          |
| Allentown, PA        | 36                         | 25    | 8     | 2     | —    | 1  | 2          | Lexington, KY        | 50                         | 26           | 16           | 5          | 1          | 2          | 2          |
| Buffalo, NY          | 64                         | 40    | 17    | 4     | 1    | 2  | 3          | Memphis, TN          | 156                        | 94           | 37           | 14         | 4          | 7          | 15         |
| Camden, NJ           | 33                         | 17    | 11    | 2     | 1    | 2  | —          | Mobile, AL           | 94                         | 56           | 29           | 5          | 1          | 3          | 5          |
| Elizabeth, NJ        | 18                         | 11    | 4     | 3     | —    | —  | 1          | Montgomery, AL       | 19                         | 15           | 3            | —          | 1          | —          | 2          |
| Erie, PA             | 37                         | 30    | 5     | 2     | —    | —  | 3          | Nashville, TN        | 146                        | 93           | 36           | 9          | 6          | 2          | 12         |
| Jersey City, NJ      | 20                         | 10    | 7     | 2     | 1    | —  | 3          | <b>W.S. Central</b>  | 1,192                      | 757          | 301          | 70         | 37         | 26         | 67         |
| New York City, NY    | 985                        | 688   | 210   | 56    | 14   | 17 | 22         | Austin, TX           | 105                        | 66           | 26           | 8          | 2          | 3          | 6          |
| Newark, NJ           | U                          | U     | U     | U     | U    | U  | U          | Baton Rouge, LA      | U                          | U            | U            | U          | U          | U          | U          |
| Paterson, NJ         | 8                          | 5     | 2     | 1     | —    | —  | —          | Corpus Christi, TX   | U                          | U            | U            | U          | U          | U          | U          |
| Philadelphia, PA     | 247                        | 144   | 69    | 23    | 8    | 3  | 13         | Dallas, TX           | 156                        | 91           | 47           | 9          | 3          | 6          | 13         |
| Pittsburgh, PA§      | U                          | U     | U     | U     | U    | U  | U          | El Paso, TX          | 94                         | 67           | 21           | 2          | 2          | 2          | 3          |
| Reading, PA          | 31                         | 23    | 5     | 2     | 1    | —  | 1          | Fort Worth, TX       | U                          | U            | U            | U          | U          | U          | U          |
| Rochester, NY        | 123                        | 93    | 18    | 7     | 2    | 3  | 6          | Houston, TX          | 357                        | 213          | 97           | 23         | 18         | 6          | 11         |
| Schenectady, NY      | 9                          | 7     | 2     | —     | —    | —  | —          | Little Rock, AR      | 72                         | 45           | 21           | 3          | 2          | 1          | 1          |
| Scranton, PA         | 29                         | 23    | 3     | 2     | 1    | —  | 1          | New Orleans, LA      | U                          | U            | U            | U          | U          | U          | U          |
| Syracuse, NY         | 13                         | 9     | 2     | 1     | —    | 1  | 3          | San Antonio, TX      | 247                        | 162          | 53           | 15         | 8          | 8          | 22         |
| Trenton, NJ          | 22                         | 17    | 3     | 1     | 1    | —  | —          | Shreveport, LA       | 40                         | 24           | 10           | 5          | 1          | —          | 4          |
| Utica, NY            | 9                          | 7     | 1     | 1     | —    | —  | —          | Tulsa, OK            | 121                        | 89           | 26           | 5          | 1          | —          | 7          |
| Yonkers, NY          | 17                         | 15    | 1     | 1     | —    | —  | —          | <b>Mountain</b>      | 1,171                      | 737          | 278          | 95         | 33         | 28         | 54         |
| <b>E.N. Central</b>  | 1,343                      | 927   | 302   | 63    | 21   | 30 | 68         | Albuquerque, NM      | 107                        | 66           | 27           | 10         | 3          | 1          | 3          |
| Akron, OH            | 51                         | 33    | 15    | 1     | —    | 2  | 1          | Boise, ID            | 48                         | 37           | 7            | 3          | —          | 1          | 9          |
| Canton, OH           | 31                         | 23    | 6     | —     | 2    | —  | 1          | Colorado Springs, CO | 141                        | 95           | 29           | 10         | 3          | 4          | 3          |
| Chicago, IL          | U                          | U     | U     | U     | U    | U  | U          | Denver, CO           | 89                         | 57           | 18           | 7          | 1          | 6          | 7          |
| Cincinnati, OH       | 75                         | 41    | 22    | 3     | 3    | 6  | 9          | Las Vegas, NV        | 300                        | 172          | 92           | 25         | 7          | 4          | 11         |
| Cleveland, OH        | 208                        | 160   | 39    | 6     | —    | 3  | 9          | Ogden, UT            | 31                         | 19           | 6            | 3          | 3          | —          | 4          |
| Columbus, OH         | 121                        | 78    | 26    | 9     | 1    | 7  | 4          | Phoenix, AZ          | 153                        | 86           | 41           | 13         | 7          | 6          | 6          |
| Dayton, OH           | 142                        | 99    | 33    | 5     | 2    | 3  | 9          | Pueblo, CO           | 20                         | 11           | 5            | 3          | 1          | —          | —          |
| Detroit, MI          | U                          | U     | U     | U     | U    | U  | U          | Salt Lake City, UT   | 118                        | 87           | 16           | 9          | 2          | 4          | 6          |
| Evansville, IN       | 39                         | 26    | 10    | 2     | 1    | —  | 3          | Tucson, AZ           | 164                        | 107          | 37           | 12         | 6          | 2          | 5          |
| Fort Wayne, IN       | 55                         | 41    | 11    | 1     | 1    | 1  | 3          | <b>Pacific</b>       | 1,583                      | 1,080        | 345          | 90         | 39         | 26         | 119        |
| Gary, IN             | 15                         | 10    | 1     | 4     | —    | —  | —          | Berkeley, CA         | 14                         | 11           | 1            | 1          | —          | 1          | —          |
| Grand Rapids, MI     | 57                         | 41    | 11    | 1     | 2    | 2  | 3          | Fresno, CA           | 97                         | 59           | 24           | 10         | 4          | —          | 9          |
| Indianapolis, IN     | 180                        | 118   | 48    | 8     | 4    | 2  | 9          | Glendale, CA         | 36                         | 28           | 6            | 1          | —          | 1          | 4          |
| Lansing, MI          | 35                         | 27    | 5     | 2     | 1    | —  | —          | Honolulu, HI         | 59                         | 45           | 10           | —          | 3          | 1          | 7          |
| Milwaukee, WI        | 92                         | 50    | 29    | 10    | 1    | 2  | 1          | Long Beach, CA       | 67                         | 41           | 16           | 5          | 3          | 2          | 8          |
| Peoria, IL           | U                          | U     | U     | U     | U    | U  | U          | Los Angeles, CA      | 206                        | 126          | 58           | 11         | 5          | 6          | 19         |
| Rockford, IL         | 43                         | 29    | 9     | 4     | 1    | —  | 1          | Pasadena, CA         | 21                         | 15           | 5            | 1          | —          | —          | 3          |
| South Bend, IN       | 55                         | 44    | 8     | 2     | —    | 1  | 1          | Portland, OR         | 116                        | 87           | 24           | 3          | 1          | 1          | 4          |
| Toledo, OH           | 85                         | 60    | 18    | 5     | 1    | 1  | 7          | Sacramento, CA       | 240                        | 163          | 51           | 15         | 7          | 4          | 13         |
| Youngstown, OH       | 59                         | 47    | 11    | —     | 1    | —  | 7          | San Diego, CA        | 155                        | 103          | 36           | 5          | 6          | 3          | 11         |
| <b>W.N. Central</b>  | 448                        | 301   | 84    | 36    | 17   | 9  | 15         | San Francisco, CA    | 130                        | 89           | 24           | 13         | 2          | 2          | 9          |
| Des Moines, IA       | —                          | —     | —     | —     | —    | —  | —          | San Jose, CA         | 187                        | 128          | 44           | 11         | 4          | —          | 20         |
| Duluth, MN           | 35                         | 28    | 4     | 2     | 1    | —  | 2          | Santa Cruz, CA       | 23                         | 18           | 1            | 2          | —          | 1          | 2          |
| Kansas City, KS      | 23                         | 16    | 3     | 4     | —    | —  | —          | Seattle, WA          | 78                         | 54           | 17           | 4          | 2          | 1          | 2          |
| Kansas City, MO      | 89                         | 57    | 14    | 8     | 7    | 3  | 2          | Spokane, WA          | 48                         | 34           | 10           | 3          | —          | 1          | 2          |
| Lincoln, NE          | 35                         | 28    | 4     | 2     | —    | 1  | 2          | Tacoma, WA           | 106                        | 79           | 18           | 5          | 2          | 2          | 6          |
| Minneapolis, MN      | 63                         | 39    | 14    | 5     | 4    | 1  | 6          | <b>Total¶</b>        | <b>9,880</b>               | <b>6,484</b> | <b>2,289</b> | <b>651</b> | <b>234</b> | <b>217</b> | <b>519</b> |
| Omaha, NE            | U                          | U     | U     | U     | U    | U  | U          |                      |                            |              |              |            |            |            |            |
| St. Louis, MO        | 60                         | 38    | 13    | 4     | 4    | 1  | 3          |                      |                            |              |              |            |            |            |            |
| St. Paul, MN         | 49                         | 37    | 7     | 5     | —    | —  | —          |                      |                            |              |              |            |            |            |            |
| Wichita, KS          | 94                         | 58    | 25    | 6     | 1    | 3  | —          |                      |                            |              |              |            |            |            |            |

U: Unavailable. —: No reported cases.

\* Mortality data in this table are voluntarily reported from 122 cities in the United States, most of which have populations of &gt;100,000. A death is reported by the place of its occurrence and by the week that the death certificate was filed. Fetal deaths are not included.

† Pneumonia and influenza.

§ Because of changes in reporting methods in this Pennsylvania city, these numbers are partial counts for the current week. Complete counts will be available in 4 to 6 weeks.

¶ Total includes unknown ages.

The *Morbidity and Mortality Weekly Report (MMWR)* Series is prepared by the Centers for Disease Control and Prevention (CDC) and is available free of charge in electronic format. To receive an electronic copy each week, visit *MMWR*'s free subscription page at <http://www.cdc.gov/mmwr/mmwrsubscribe.html>. Paper copy subscriptions are available through the Superintendent of Documents, U.S. Government Printing Office, Washington, DC 20402; telephone 202-512-1800.

Data in the weekly *MMWR* are provisional, based on weekly reports to CDC by state health departments. The reporting week concludes at close of business on Friday; compiled data on a national basis are officially released to the public on the following Friday. Data are compiled in the National Center for Public Health Informatics, Division of Integrated Surveillance Systems and Services. Address all inquiries about the *MMWR* Series, including material to be considered for publication, to Editor, *MMWR* Series, Mailstop E-90, CDC, 1600 Clifton Rd., N.E., Atlanta, GA 30333 or to [mmwrq@cdc.gov](mailto:mmwrq@cdc.gov).

All material in the *MMWR* Series is in the public domain and may be used and reprinted without permission; citation as to source, however, is appreciated.

Use of trade names and commercial sources is for identification only and does not imply endorsement by the U.S. Department of Health and Human Services.

References to non-CDC sites on the Internet are provided as a service to *MMWR* readers and do not constitute or imply endorsement of these organizations or their programs by CDC or the U.S. Department of Health and Human Services. CDC is not responsible for the content of these sites. URL addresses listed in *MMWR* were current as of the date of publication.